

DAB

Pompa ad Ingranaggi Gear Pump

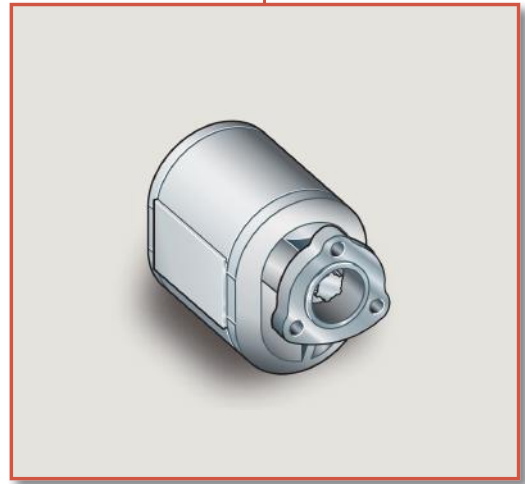
CODICE DI ORDINAZIONE / ORDERING CODE

200 DAB 2 10 D 0
 | | | | |
 TIPO/TYPE GRUPPO POMPA/PUMP GROUP CILINDRATA/DISPLACEMENT ROTAZIONE/ROTATION
 D = DESTRO/CLOCKWISE
 S = SINISTRO/ANTICLOCKWISE
 DIN 5482
 POMPA AD INGRANAGGI/GEAR PUMP

DIN
5 4 8 2

DAB 2 10
 DAB 2 15
 DAB 2 25
 DAB 2 36

 DAB 3 25
 DAB 3 36
 DAB 3 46
 DAB 3 55



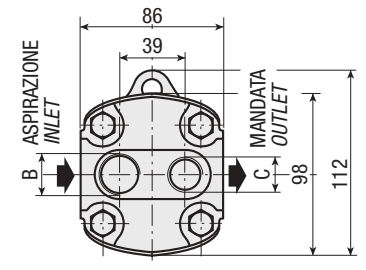
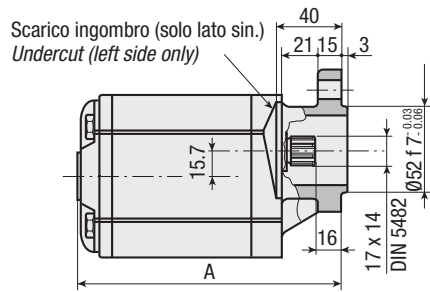
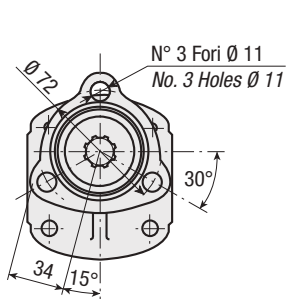
CARATTERISTICHE E DATI TECNICI / SPECIFICATIONS AND TECHNICAL DATA

TIPO TYPE	CODICE CODE	CILINDRATA DISPLACEMENT cm ³ /rev.	A mm	B ASPIRAZIONE INLET	C MANDATA OUTLET	PESO WEIGHT kg
DAB 2 10	200DAB210 D S 0	10	139	3/4" G	1/2" G	2.7
DAB 2 15	200DAB215 D S 0	15	148	3/4" G	1/2" G	3.0
DAB 2 25	200DAB225 D S 0	25	164.5	3/4" G	1/2" G	3.2
DAB 2 36	200DAB236 D S 0	35	181.5	3/4" G	1/2" G	3.7
DAB 3 25	200DAB325 D S 0	25	160.5	1" G	3/4" G	4.1
DAB 3 36	200DAB336 D S 0	36	171	1" G	3/4" G	5.4
DAB 3 46	200DAB346 D S 0	46	180	1" G	3/4" G	5.8
DAB 3 55	200DAB355 D S 0	55	188.5	1" G	3/4" G	6.2

**KIT RASAMENTI
THRUST PLATES KIT
COD. 2D441215000**

**KIT GUARNIZIONI COMPLETO
COMPLETE SEALS KIT
COD. 2D551215000**

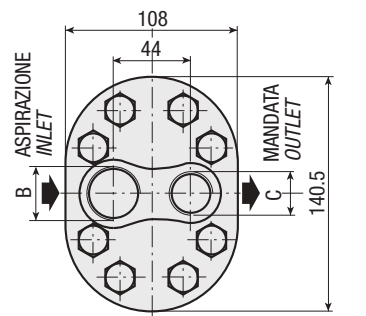
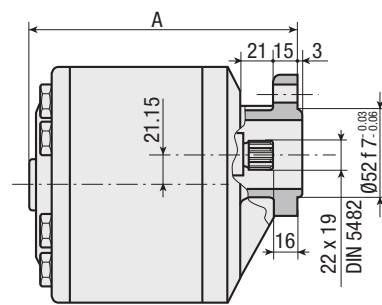
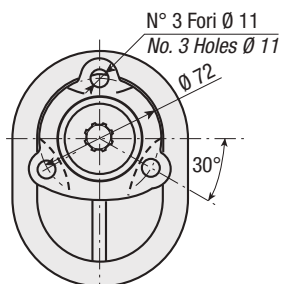
DAB 2



**KIT RASAMENTI
THRUST PLATES KIT
COD. 2D441325000**

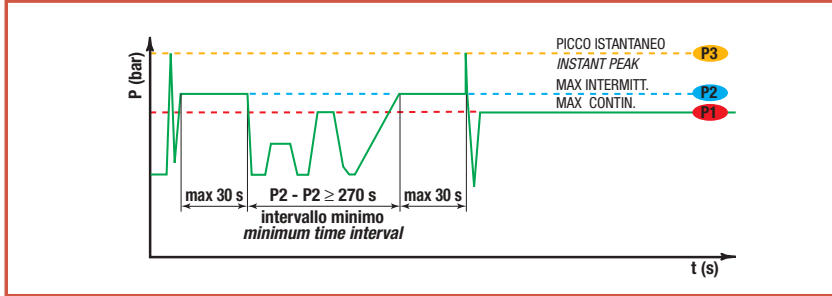
**KIT GUARNIZIONI COMPLETO
COMPLETE SEALS KIT
COD. 2D551325000**

DAB 3



DATI TECNICI / TECHNICAL DATA

ESEMPIO CICLI LAVORO / EXAMPLE OF WORKING CYCLES

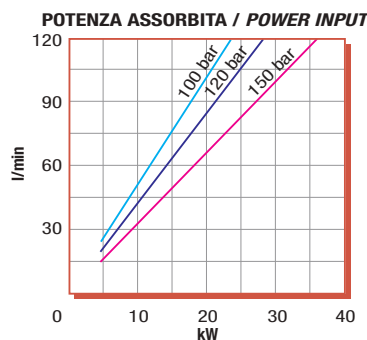
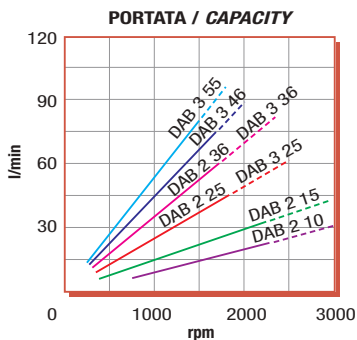


Pressione d'aspirazione: <i>Inlet pressure:</i>	0.7 ÷ 1.5 bar (assoluti/absolute)
Campo viscosità lavoro: <i>Operating viscosity range:</i>	12 ÷ 100 cSt
Temperatura fluido °C (t): <i>Fluid temperature °C (t):</i>	-10° + 80° C

Pressione Lavoro <i>Working Press.</i>	P2	Contaminazione / <i>Contamination</i>		Filtro / <i>Filter</i> βx = 75
		NAS 1638	ISO 4406	
≤ 200 bar		12	21/18	40 μm

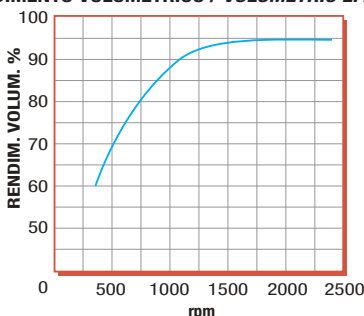
◀ **FILTRAZIONE CONSIGLIATA (ritorno o mandata)**
RECOMMENDED FILTERING (return or outlet)

TIPO / <i>TYPE</i>				DAB 2 10	DAB 2 15	DAB 2 25	DAB 2 36	DAB 3 25	DAB 3 36	DAB 3 46	DAB 3 55
Cilindrata <i>Displacement</i>	Vg	cm ³ /n cm ³ /rev.		10	15	25	35	25	36	46	55
Pressione massima continua <i>Max continuous operating pressure</i>	P1		bar	180	140	120	100	130	130	120	120
Pressione massima intermittente <i>Max intermitt. operat. press.</i>	(max 30 s)	P2		200	160	150	120	150	150	140	140
Pressione massima di picco <i>Max peak pressure</i>	(≤ 0.1 s)	P3		270	210	180	150	200	200	180	180
Velocità massima intermittente <i>Max intermittent speed</i>	(P ≤ 20 bar)	n3		3000	3000	2500	2100	2500	2300	2000	1800
Velocità massima continua <i>Max continuous speed</i>	(≤ P1)	n1	n/min r.p.m.	1500	1500	1500	1400	1500	1500	1500	1300
Velocità minima intermittente <i>Min intermittent speed</i>	(≤ P2 x 0.5) (max 30 s)	n4		800	650	650	600	600	550	550	550

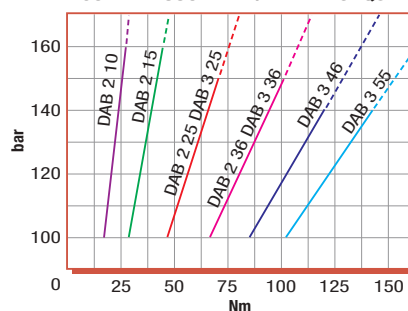


DIAGRAMMI / DIAGRAMS

RENDIMENTO VOLUMETRICO / VOLUMETRIC EFFICIENCY



COPPIA ASSORBITA / DRIVE TORQUE



RILIEVI ESEGUITI CON OLIO
ISO VG 46 A 50° C (√= 30 cSt)
THE ABOVE SPECIFICATIONS
REFER TO OIL TYPE ISO
VG 46 AT 50° C (√=30 cSt)



DAB 2

KED

Pompa DAB 2 + Distributore Elettrico
DAB 2 Pump + Electric Tipping Valve Group

CODICE DI ORDINAZIONE / ORDERING CODE

KED2 0 10 D 13 1

1 = 12 V DC
2 = 24 V DC

TARATURA VALVOLA MASSIMA PRESS.
PRES. RELIEF VALVE SETTING
13 MPa (130 bar) STANDARD

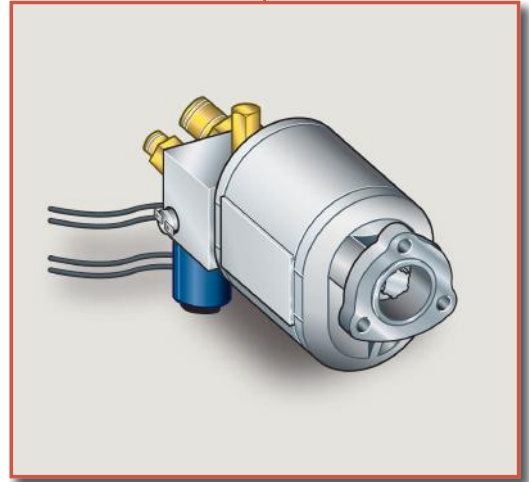
ROTAZIONE/ROTATION
D = DESTRO/CLOCKWISE
S = SINISTRO/ANTICLOCKWISE

CILINDRATA POMPA/PUMP DISPLACEMENT

VERSIONI/VERSIONS

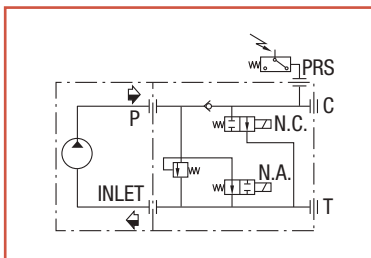
TIPO/TYPE

DIN KED 2 10
5 4 8 2 KED 2 15
KED 2 25

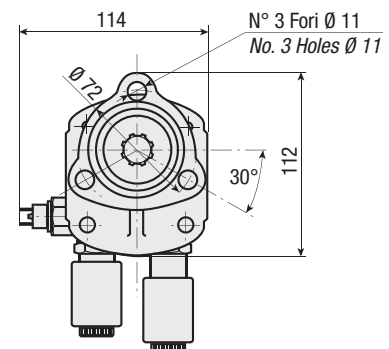
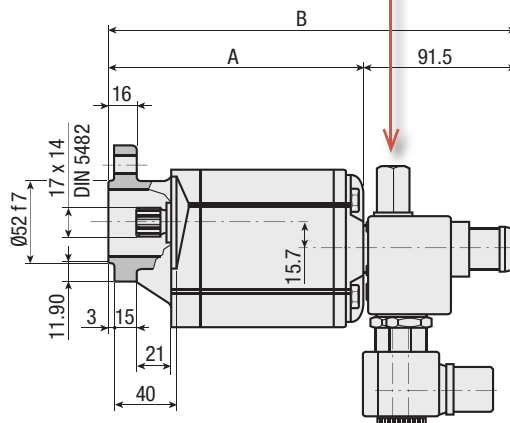
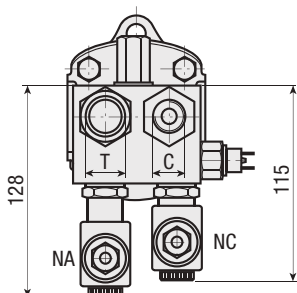


CARATTERISTICHE E DATI TECNICI / SPECIFICATIONS AND TECHNICAL DATA

TIPO TYPE	CODICE CODE	A mm	B mm	T ASPIRAZIONE INLET	C MANDATA OUTLET	PESO WEIGHT kg
KED 2 10	KED2010 D S 13 1 2	139	230.5	Ø 26	1/2" G	4.2
KED 2 15	KED2015 D S 13 1 2	148	239.5	Ø 26	1/2" G	4.5
KED 2 25	KED2025 D S 13 1 2	164.5	256	Ø 26	1/2" G	4.7



ATTENZIONE: Evitare di far intervenire la valvola di massima pressione per un periodo prolungato 10 s in quanto il riscaldamento potrebbe provocare danni alla pompa.
WARNING: Avoid relief valve insertion time longer than (≥ 10 s) since overheating might damage the pump.



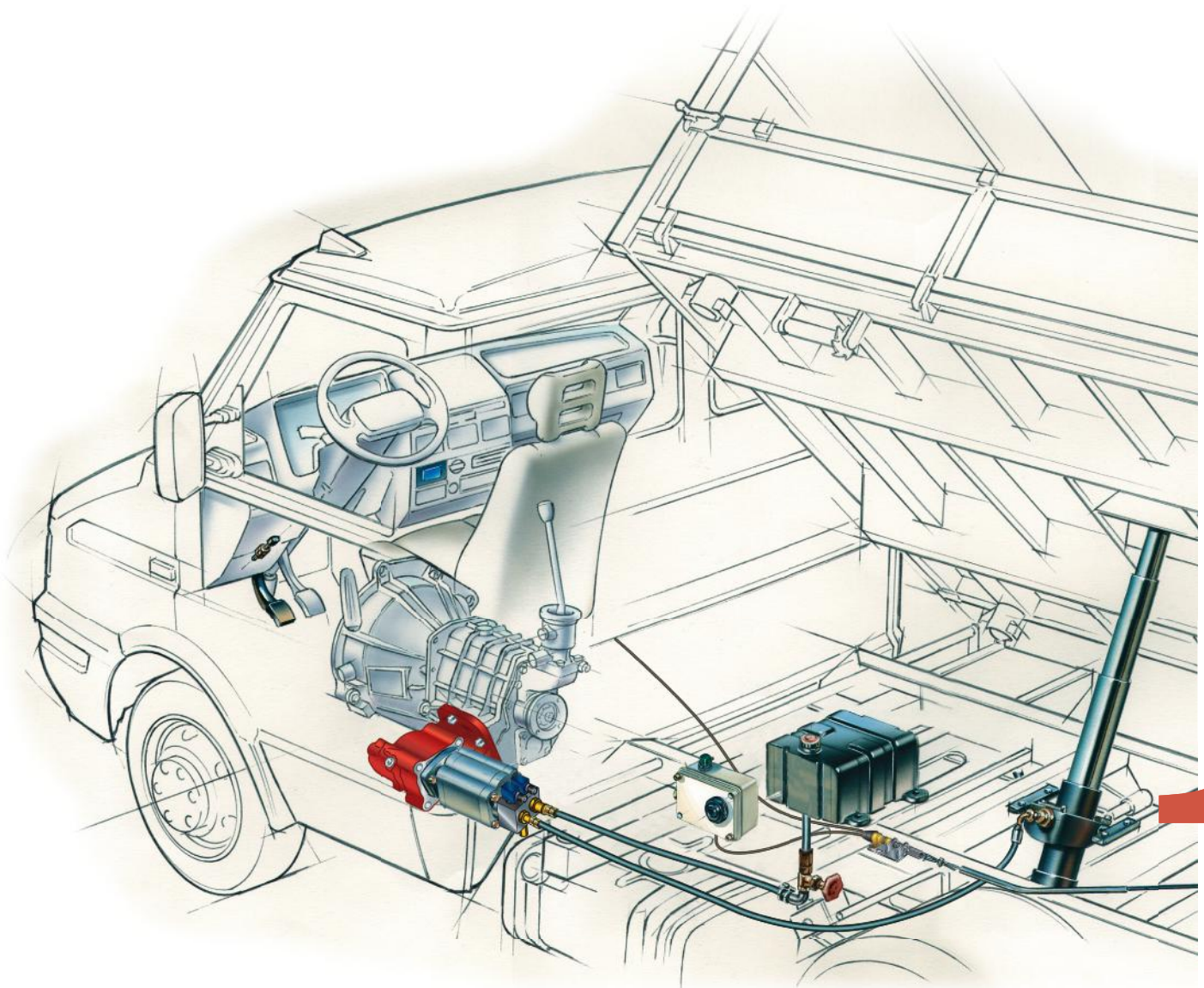


Portata massima Flow max	25 l/min	Temperatura fluido °C (t): Fluid temperature °C (t):	-25° + 80°C
Campo viscosità Viscosity range	12-100 cSt	Fluido olio minerale Mineral oil	HLP (DIN 51525)

- > Gruppo distributore a **comando elettrico integrato su pompa ad ingranaggi**, per portata massima di 25 l/min.
- > Consente il comando di **salita e discesa** con ricircolo olio su mandata pompa in posizione di riposo.
- > La **valvola di massima pressione** è posizionata in P, la **valvola di ritegno** in C.

- > This group made of an **electrically operated tipping valve allowing raising and lowering** independent control (12 and 24 volt) integrated with gear pump DAB2 is particularly suitable for tippers requiring oil flows up to 25 l/min in the idle position, oil flows goes directly from the pump into the suction line.
- > **Check line valve is built in** on the C line and **relief valve** on the P one.

ESEMPIO DI INSTALLAZIONE / INSTALLATION DIAGRAM



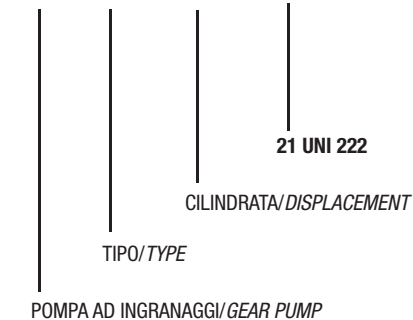
BIDIREZIONALE
BI-ROTATIONAL

PBR

Pompa ad Ingranaggi
Gear Pump

CODICE DI ORDINAZIONE / ORDERING CODE

200 PBR 036 0 0

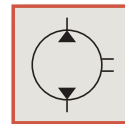


UNI
21-222

PBR 36

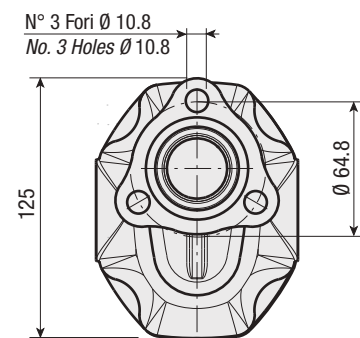
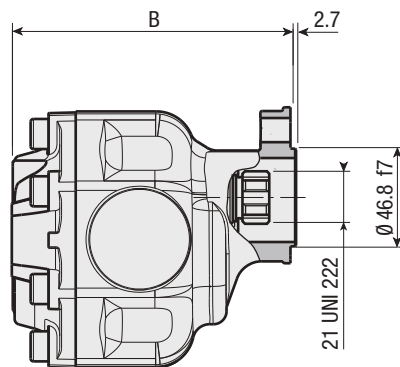
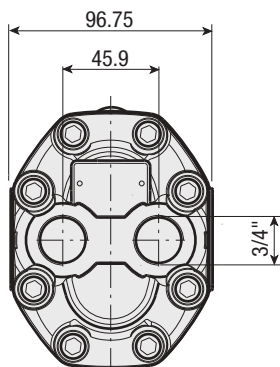
PBR 43

PBR 64



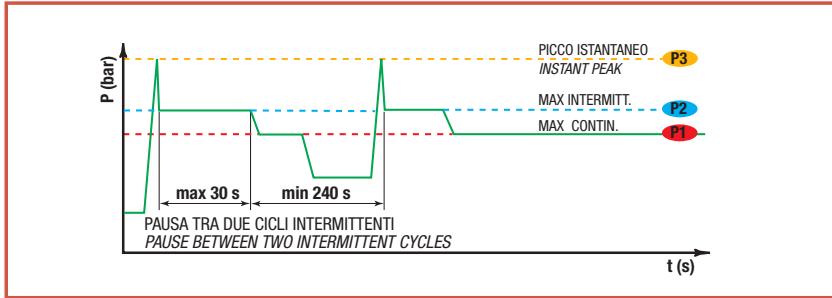
CARATTERISTICHE E DATI TECNICI / SPECIFICATIONS AND TECHNICAL DATA

TIPO TYPE	CODICE CODE	CILINDRATA DISPLACEMENT cm ³ /rev.	B mm	ASPIRAZIONE INLET	MANDATA OUTLET	PESO WEIGHT kg
PBR 36	200PBR03600	36	128	3/4" G	3/4" G	6.2
PBR 43	200PBR04300	43	133	3/4" G	3/4" G	6.8
PBR 64	200PBR06400	64	148	3/4" G	3/4" G	7.3



DATI TECNICI / TECHNICAL DATA

ESEMPIO CICLI LAVORO / EXAMPLE OF WORKING CYCLES



Pressione d'aspirazione: Inlet pressure:	0.7 ÷ 1.5 bar (assoluti/absolute)
Campo viscosità lavoro: Operating viscosity range:	12 ÷ 100 cSt
Temperatura fluido °C (t): Fluid temperature °C (t):	-10° + 80° C

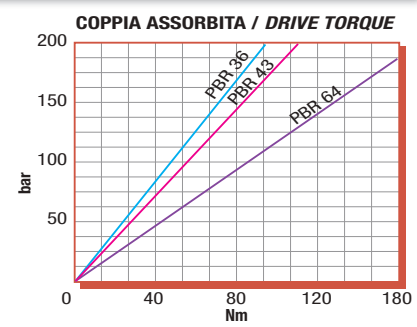
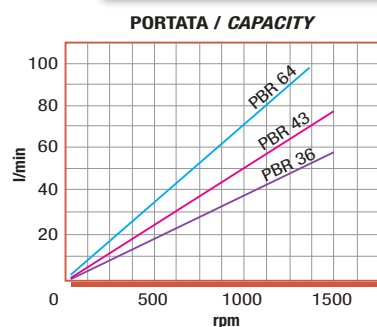
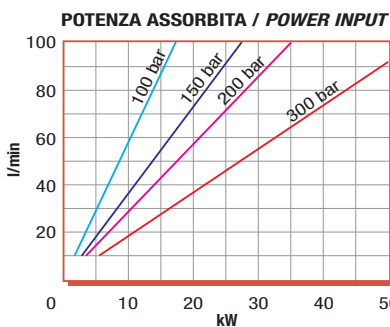
Pressione Lavoro Working Press. P2	Contaminazione / Contamination		Filtro / Filter βx = 75
	NAS 1638	ISO 4406	
≤ 200 bar	12	21/18	40 μm
≥ 200 bar	11	20/17	25 μm

◀ **FILTRAZIONE CONSIGLIATA (ritorno o mandata)**
RECOMMENDED FILTERING (return or outlet)

TIPO / TYPE		PBR36	PBR43	PBR64
Cilindrata Displacement	Vg cm ³ /n cm ³ /rev.	36	43	64
Pressione massima continua Max continuous operating pressure	P1	200	190	170
Pressione massima intermittente Max intermitt. operat. press.	(max 30 s) P2	220	210	190
Pressione massima di picco Max peak pressure	(≤ 0.1 s) P3	250	250	240
Velocità massima intermittente Max intermittent speed	(P ≤ 20 bar) n3	2000	2000	2000
Velocità massima continua Max continuous speed	(≤ P1) n1	1500	1500	1400
Velocità minima intermittente Min intermittent speed	(≤ P2 x 0.5) (max 30 s) n4	450	450	450

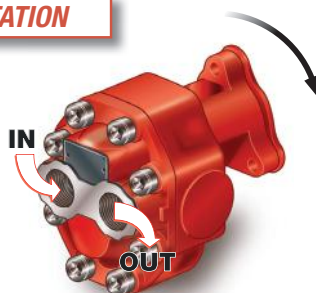
DIAGRAMMI / DIAGRAMS

RILIEVI ESEGUITI CON OLIO ISO VG 46 A 50° C (√= 30 cSt)
THE ABOVE SPECIFICATIONS REFER TO OIL TYPE ISO VG 46 AT 50° C (√=30 cSt)

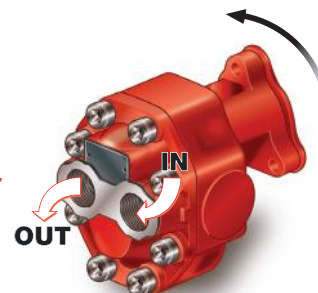


ROTAZIONE POMPA / PUMP ROTATION

**SINISTRA
ANTI-CLOCKWISE**



**DESTRA
CLOCKWISE**





FZO

Pompa ad Ingranaggi Gear Pump

CODICE DI ORDINAZIONE / ORDERING CODE

200 FZO 015 D 0

21 UNI 222

ROTAZIONE/ROTATION
D = DESTRO/CLOCKWISE
S = SINISTRO/ANTICLOCKWISE

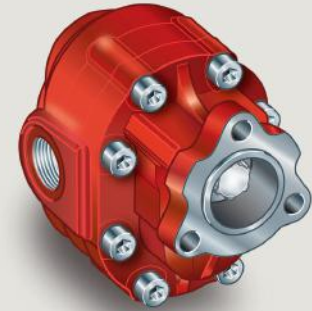
CILINDRATA/DISPLACEMENT

TIPO/TYPE

POMPA AD INGRANAGGI/GEAR PUMP

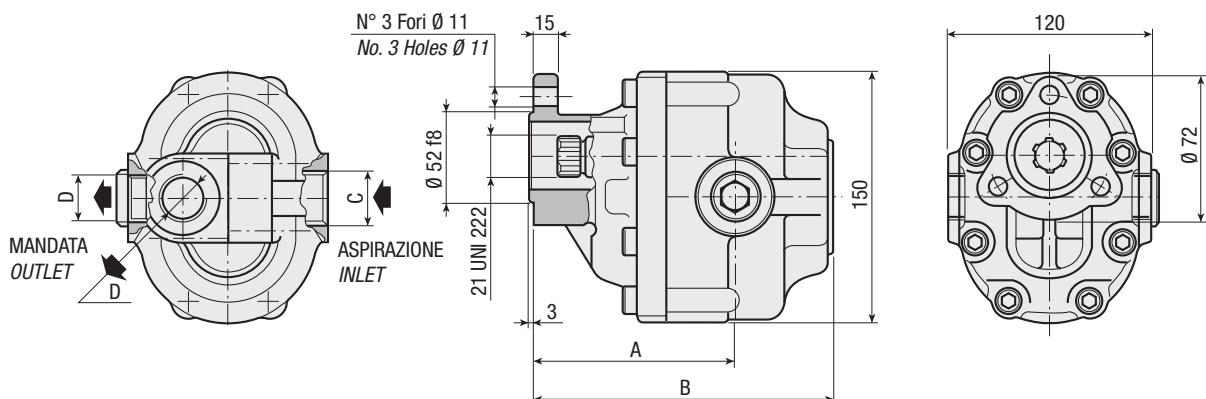
UNI
21-222

FZO 15
FZO 22
FZO 27
FZO 36
FZO 43
FZO 57
FZO 65
FZO 90
FZO 110



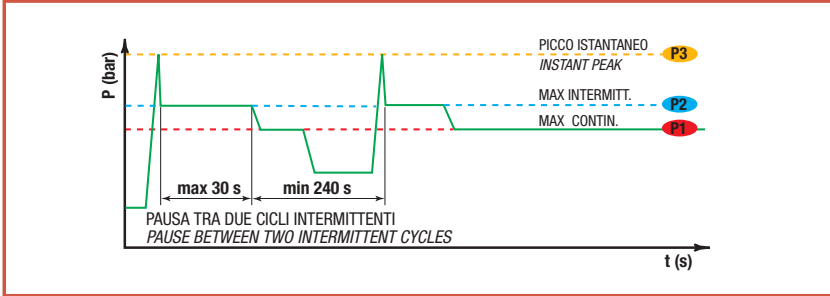
CARATTERISTICHE E DATI TECNICI / SPECIFICATIONS AND TECHNICAL DATA

TIPO TYPE	CODICE CODE	CILINDRATA DISPLACEMENT cm ³ /rev.	A mm	B mm	C ASPIRAZIONE INLET	D MANDATA OUTLET	PESO WEIGHT kg
FZO 15	200FZ0015 D S 0	15	96.5	142.5	3/4" G	1/2" G	8.4
FZO 22	200FZ0022 D S 0	22	99.5	147.5	3/4" G	1/2" G	8.9
FZO 27	200FZ0027 D S 0	27	105	152.5	3/4" G	1/2" G	9
FZO 36	200FZ0036 D S 0	36	101.5	157.5	3/4" G	1/2" G	9.1
FZO 43	200FZ0043 D S 0	43	104.5	162.5	1" G	3/4" G	10.2
FZO 57	200FZ0057 D S 0	57	111.5	172.5	1" G	3/4" G	11.1
FZO 65	200FZ0065 D S 0	65	116.5	177.5	1" G	3/4" G	11.5
FZO 90	200FZ0090 D S 0	84	126	192.5	1" 1/4 G	1" G	12.6
FZO 110	200FZ0110 D S 0	105	138	204.5	1" 1/4 G	1" G	13.7



DATI TECNICI / TECHNICAL DATA

ESEMPIO CICLI LAVORO / EXAMPLE OF WORKING CYCLES

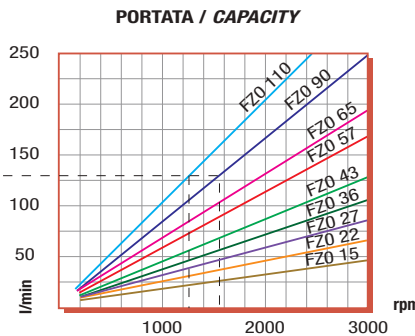
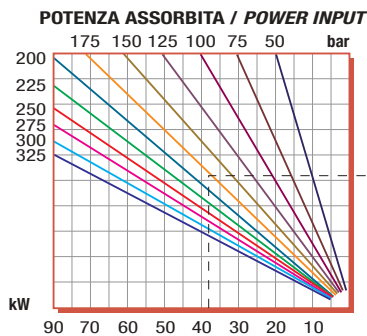


Pressione d'aspirazione: Inlet pressure:	0.7 ÷ 1.5 bar (assoluti/absolute)
Campo viscosità lavoro: Operating viscosity range:	12 ÷ 100 cSt
Temperatura fluido °C (t): Fluid temperature °C (t):	-10° + 80° C

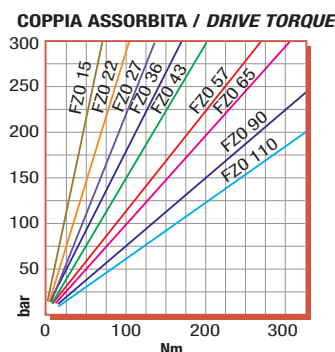
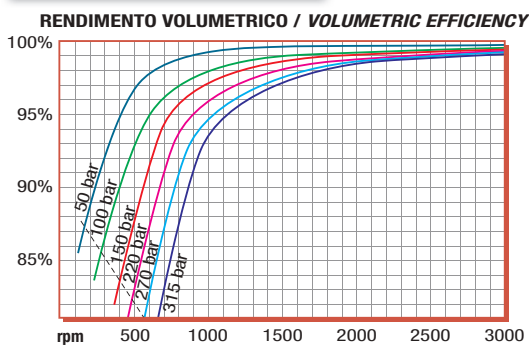
Pressione Lavoro Working Press. P2	Contaminazione / Contamination		Filtro / Filter βx = 75
	NAS 1638	ISO 4406	
≤ 200 bar	12	21/18	40 μm
≥ 200 bar	11	20/17	25 μm

◀ **FILTRAZIONE CONSIGLIATA (ritorno o mandata)**
RECOMMENDED FILTERING (return or outlet)

TIPO / TYPE			FZ015	FZ022	FZ027	FZ036	FZ043	FZ057	FZ065	FZ090	FZ0110
	Vg	cm ³ /n cm ³ /rev.	15	22	27	36	43	57	65	84	105
Cilindrata Displacement											
Pressione massima continua Max continuous operating pressure	P1	bar	315	305	300	300	280	240	220	210	180
Pressione massima intermittente Max intermitt. operat. press. (max 30 s)	P2		340	330	325	325	305	265	240	230	200
Pressione massima di picco Max peak pressure (≤ 0.1 s)	P3		450	450	450	450	400	380	350	300	250
Velocità massima intermittente Max intermittent speed (P ≤ 20 bar)	n3	n/min r.p.m.	4000	4000	3500	3500	3500	3500	3500	3500	3000
Velocità massima continua Max continuous speed (≤ P1)	n1		2500	2500	2200	2200	2200	2000	1800	1500	1500
Velocità minima intermittente Min intermittent speed (≤ P2 x 0.5) (max 30 s)	n4		450	450	350	350	350	300	300	300	300



DIAGRAMMI / DIAGRAMS



RILIEVI ESEGUITI CON OLIO
ISO VG 46 A 50° C (√= 30 cSt)
THE ABOVE SPECIFICATIONS
REFER TO OIL TYPE ISO
VG 46 AT 50° C (√=30 cSt)



FZO

Pompa ad Ingranaggi Gear Pump

CODICE DI ORDINAZIONE / ORDERING CODE

200 **FZO** 015 **D S**

TIPO / TYPE

CILINDRATA / DISPLACEMENT

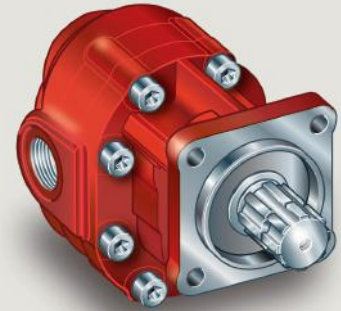
ROTAZIONE / ROTATION
D = DESTRO / CLOCKWISE
S = SINISTRO / ANTICLOCKWISE

DIN 5462

POMPA AD INGRANAGGI / GEAR PUMP

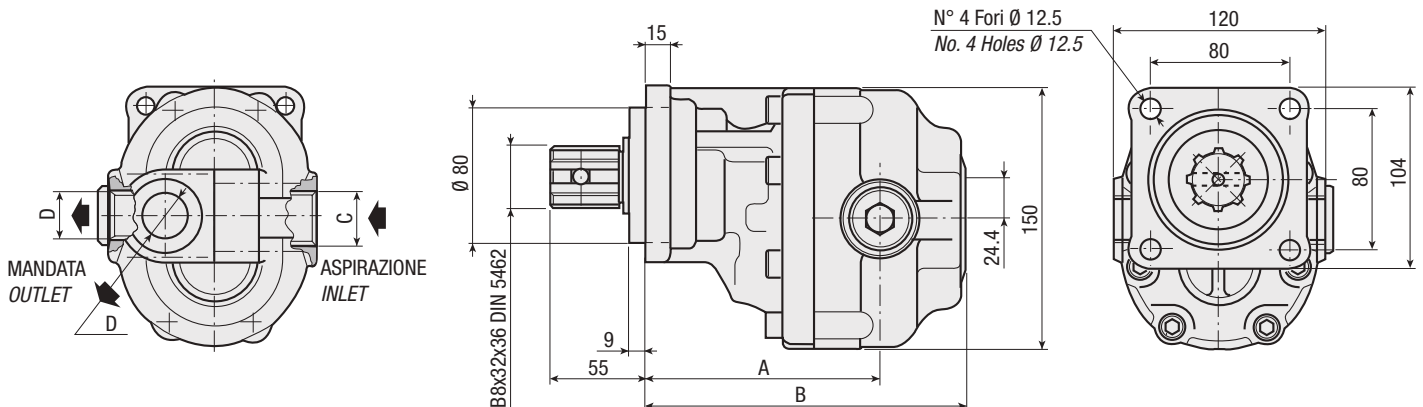
DIN
5 4 6 2
SE

FZO 15
FZO 22
FZO 27
FZO 36
FZO 43
FZO 57
FZO 65
FZO 90
FZO 110



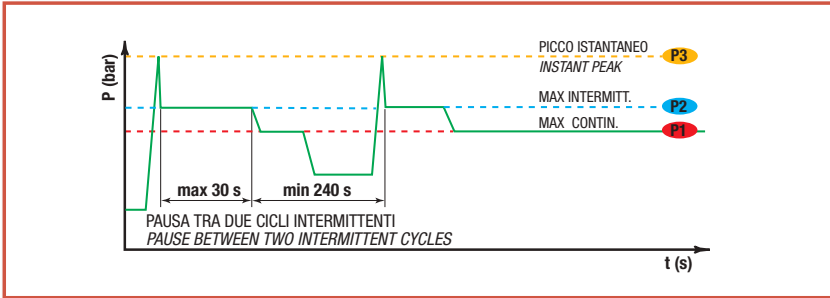
CARATTERISTICHE E DATI TECNICI / SPECIFICATIONS AND TECHNICAL DATA

TIPO TYPE	CODICE CODE	CILINDRATA DISPLACEMENT cm ³ /rev.	A mm	B mm	C ASPIRAZIONE INLET	D MANDATA OUTLET	PESO WEIGHT kg
FZO 15	200FZ0015 D S	15	123	169	3/4" G	1/2" G	10.8
FZO 22	200FZ0022 D S	22	126	174	3/4" G	1/2" G	11.3
FZO 27	200FZ0027 D S	27	125	179	3/4" G	1/2" G	11.5
FZO 36	200FZ0036 D S	36	128	184	3/4" G	1/2" G	12
FZO 43	200FZ0043 D S	43	131	189	1" G	3/4" G	12.4
FZO 57	200FZ0057 D S	57	138	199	1" G	3/4" G	13.2
FZO 65	200FZ0065 D S	65	143	204	1" G	3/4" G	13.7
FZO 90	200FZ0090 D S	84	152,5	219	1" 1/4 G	1" G	14.7
FZO 110	200FZ0110 D S	105	164,5	231	1" 1/4 G	1" G	16.5



DATI TECNICI / TECHNICAL DATA

ESEMPIO CICLI LAVORO / EXAMPLE OF WORKING CYCLES



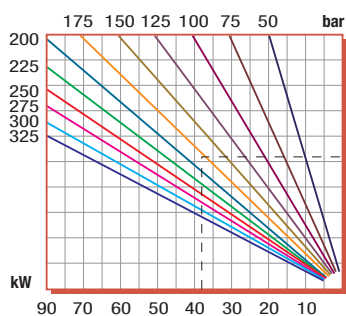
Pressione d'aspirazione: Inlet pressure:	0.7 ÷ 1.5 bar (assoluti/absolute)
Campo viscosità lavoro: Operating viscosity range:	12 ÷ 100 cSt
Temperatura fluido °C (t): Fluid temperature °C (t):	-10° + 80° C

Pressione Lavoro Working Press. P2	Contaminazione / Contamination		Filtro / Filter βx = 75
	NAS 1638	ISO 4406	
≤ 200 bar	12	21/18	40 μm
≥ 200 bar	11	20/17	25 μm

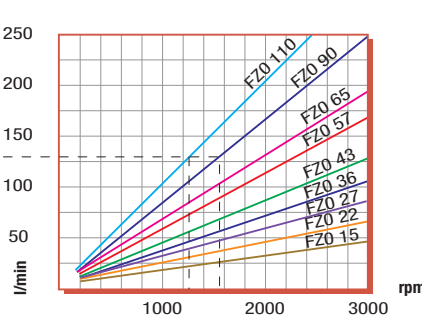
◀ **FILTRAZIONE CONSIGLIATA (ritorno o mandata)**
RECOMMENDED FILTERING (return or outlet)

TIPO / TYPE			FZ015	FZ022	FZ027	FZ036	FZ043	FZ057	FZ065	FZ090	FZ0110
	Vg	cm ³ /n cm ³ /rev.	15	22	27	36	43	57	65	84	105
Cilindrata Displacement											
Pressione massima continua Max continuous operating pressure	P1		315	305	300	300	280	240	220	210	180
Pressione massima intermittente Max intermitt. operat. press.	(max 30 s)	P2	340	330	325	325	305	265	240	230	200
Pressione massima di picco Max peak pressure	(≤ 0.1 s)	P3	450	450	450	450	400	380	350	300	250
Velocità massima intermittente Max intermittent speed	(P ≤ 20 bar)	n3	4000	4000	3500	3500	3500	3500	3500	3500	3000
Velocità massima continua Max continuous speed	(≤ P1)	n1	2500	2500	2200	2200	2200	2000	1800	1500	1500
Velocità minima intermittente Min intermittent speed	(≤ P2 x 0.5) (max 30 s)	n4	450	450	350	350	350	300	300	300	300

POTENZA ASSORBITA / POWER INPUT



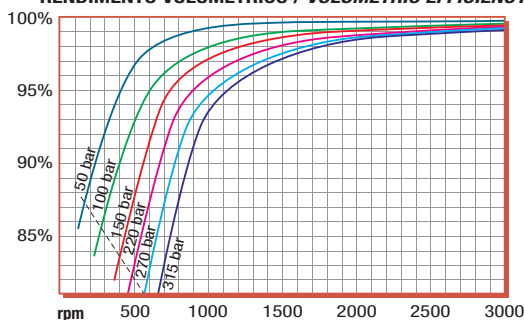
PORTATA / CAPACITY



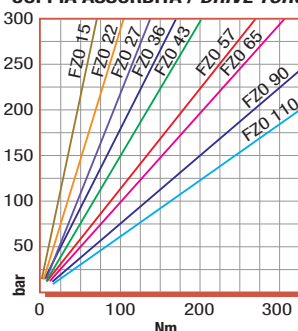
RILIEVI ESEGUITI CON OLIO
 ISO VG 46 A 50° C (√= 30 cSt)
 THE ABOVE SPECIFICATIONS
 REFER TO OIL TYPE ISO
 VG 46 AT 50° C (√=30 cSt)

DIAGRAMMI / DIAGRAMS

RENDIMENTO VOLUMETRICO / VOLUMETRIC EFFICIENCY



COPPIA ASSORBITA / DRIVE TORQUE





FZL

Pompa ad Ingranaggi Gear Pump

CODICE DI ORDINAZIONE / ORDERING CODE

200 FZL 015 **D** **S**

D **S**

DIN 5462

ROTAZIONE/ROTATION

D = DESTRO/CLOCKWISE

S = SINISTRO/ANTICLOCKWISE

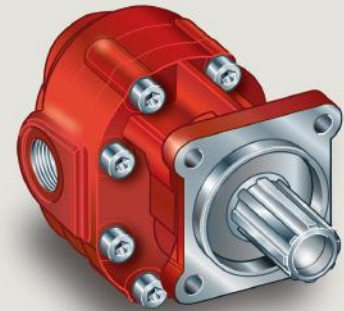
CILINDRATA/DISPLACEMENT

TIPO/TYPE

POMPA AD INGRANAGGI/GEAR PUMP

DIN
5 4 6 2
SE

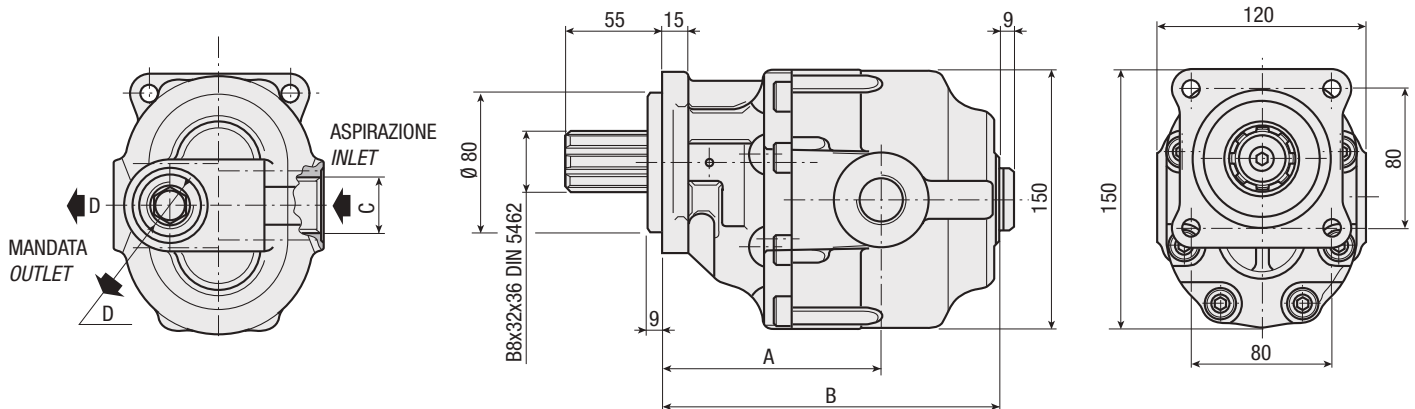
FZL 15
FZL 22
FZL 36
FZL 43
FZL 57
FZL 65
FZL 90
FZL 110



ALBERO USCITA NON SUPPORTATO
OUTPUT SHAFT NOT SUPPORTED

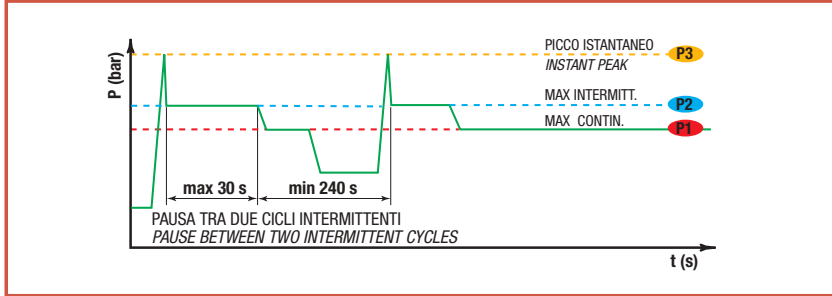
CARATTERISTICHE E DATI TECNICI / SPECIFICATIONS AND TECHNICAL DATA

TIPO TYPE	CODICE CODE		CILINDRATA DISPLACEMENT cm ³ /rev.	A mm	B mm	C ASPIRAZIONE INLET	D MANDATA OUTLET	PESO WEIGHT kg
FZL 15	200FZL015	D S	15	96.5	142.5	3/4" G	1/2" G	8.6
FZL 22	200FZL022	D S	22	101.5	147.5	3/4" G	1/2" G	9.1
FZL 36	200FZL036	D S	36	99.5	157.5	3/4" G	1/2" G	9.8
FZL 43	200FZL043	D S	43	104.5	162.5	1" G	3/4" G	10.2
FZL 57	200FZL057	D S	57	111.5	172,5	1" G	3/4" G	11
FZL 65	200FZL065	D S	65	116.5	177.5	1" G	3/4" G	11.5
FZL 90	200FZL090	D S	84	126	192.5	1" 1/4 G	1" G	12.5
FZL 110	200FZL110	D S	105	138	204.5	1" 1/4 G	1" G	14.3



DATI TECNICI / TECHNICAL DATA

ESEMPIO CICLI LAVORO / EXAMPLE OF WORKING CYCLES



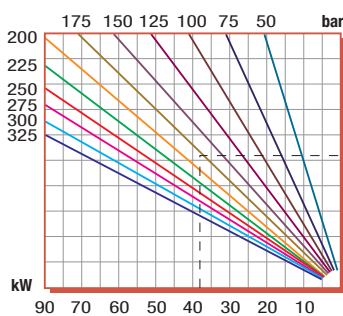
Pressione d'aspirazione: Inlet pressure:	0.7 ÷ 1.5 bar (assoluti/absolute)
Campo viscosità lavoro: Operating viscosity range:	12 ÷ 100 cSt
Temperatura fluido °C (t): Fluid temperature °C (t):	-10° + 80° C

Pressione Lavoro Working Press. P2	Contaminazione / Contamination		Filtro / Filter βx = 75
	NAS 1638	ISO 4406	
≤ 200 bar	12	21/18	40 μm
≥ 200 bar	11	20/17	25 μm

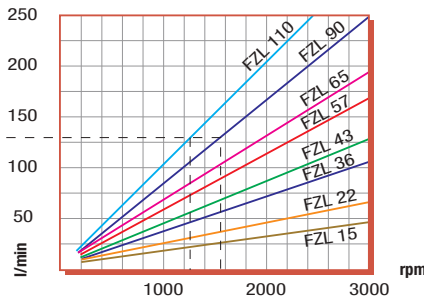
◀ **FILTRAZIONE CONSIGLIATA (ritorno o mandata)**
RECOMMENDED FILTERING (return or outlet)

TIPO / TYPE			FZL15	FZL22	FZL36	FZL43	FZL57	FZL65	FZL90	FZL110
	Vg	cm ³ /n cm ³ /rev.	15	22	36	43	57	65	84	105
Pressione massima continua Max continuous operating pressure	P1	bar	315	305	300	280	240	220	210	180
Pressione massima intermittente Max intermitt. operat. press. (max 30 s)	P2		340	330	325	305	265	240	230	200
Pressione massima di picco Max peak pressure (≤ 0.1 s)	P3		360	350	345	325	285	265	250	220
Velocità massima intermittente Max intermittent speed (P ≤ 20 bar)	n3	n/min r.p.m.	4000	4000	3500	3500	3500	3500	3500	3000
Velocità massima continua Max continuous speed (≤ P1)	n1		2500	2500	2200	2200	2000	1800	1500	1500
Velocità minima intermittente Min intermittent speed (≤ P2 x 0.5) (max 30 s)	n4		450	450	350	350	300	300	300	300

POTENZA ASSORBITA / POWER INPUT



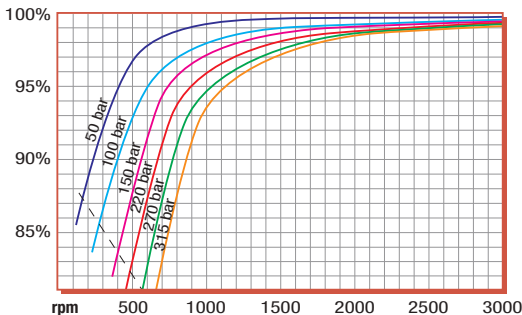
PORTATA / CAPACITY



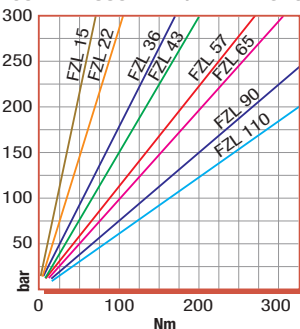
RILIEVI ESEGUITI CON OLIO
ISO VG 46 A 50° C (√= 30 cSt)
THE ABOVE SPECIFICATIONS
REFER TO OIL TYPE ISO
VG 46 AT 50° C (√=30 cSt)

DIAGRAMMI / DIAGRAMS

RENDIMENTO VOLUMETRICO / VOLUMETRIC EFFICIENCY



COPIA ASSORBITA / DRIVE TORQUE





FSL

Pompa ad Ingranaggi Gear Pump

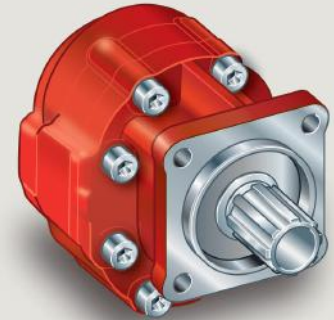
CODICE DI ORDINAZIONE / ORDERING CODE

200 **FSL** 057 **D** **S**
 | | | | |
 TIPO/TYPE CILINDRATA/DISPLACEMENT ROTAZIONE/ROTATION
 D = DESTRO/CLOCKWISE
 S = SINISTRO/ANTICLOCKWISE
 DIN 5462
 POMPA AD INGRANAGGI/GEAR PUMP

DIN FSL 43
5 4 6 2 FSL 57
SE FSL 65
 FSL 90
 FSL 110



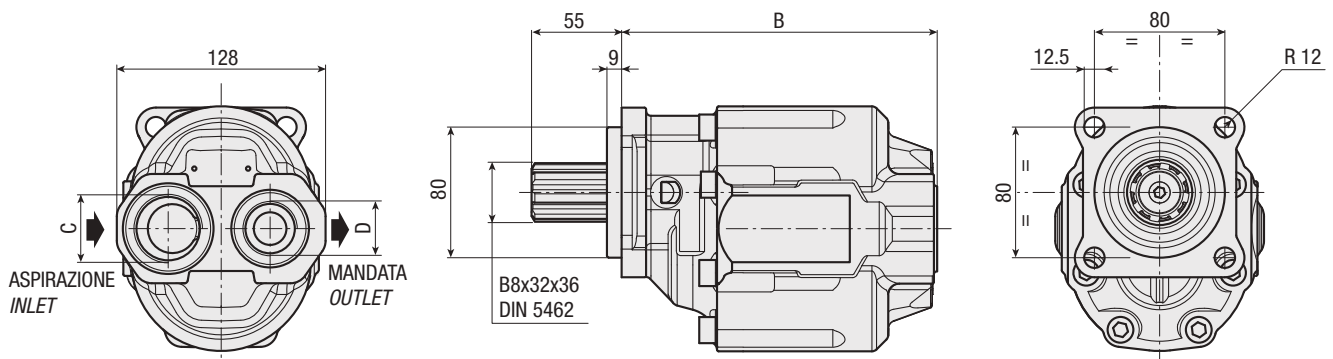
SCANIA



ALBERO USCITA NON SUPPORTATO
OUTPUT SHAFT NOT SUPPORTED

CARATTERISTICHE E DATI TECNICI / SPECIFICATIONS AND TECHNICAL DATA

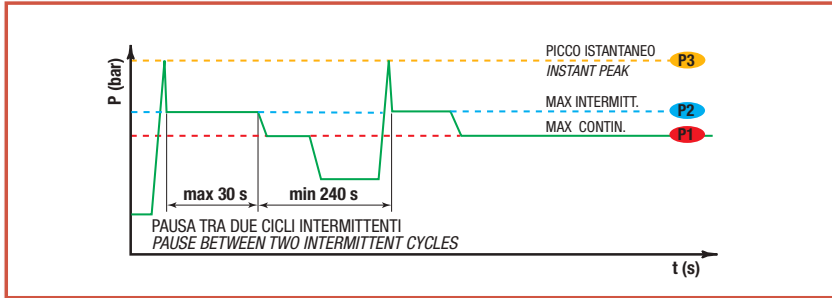
TIPO TYPE	CODICE CODE	CILINDRATA DISPLACEMENT cm ³ /rev.	B mm	C ASPIRAZIONE INLET	D MANDATA OUTLET	PESO WEIGHT kg
FSL 43	200FSL043 D S	43	132.5	1" G	3/4" G	10.2
FSL 57	200FSL057 D S	57	173.5	1" G	3/4" G	12.2
FSL 65	200FSL065 D S	65	178.5	1" G	3/4" G	12.6
FSL 90	200FSL090 D S	90	193.5	1" 1/4 G	1" G	13.9
FSL 110	200FSL110 D S	105	204.5	1" 1/4 G	1" G	14.3



KIT RASAMENTI/THRUST PLATES KIT COD. 2F451015000 KIT GUARNIZIONI COMPLETO/COMPLETE SEALS KIT COD. 2Z551090000

DATI TECNICI / TECHNICAL DATA

ESEMPIO CICLI LAVORO / EXAMPLE OF WORKING CYCLES



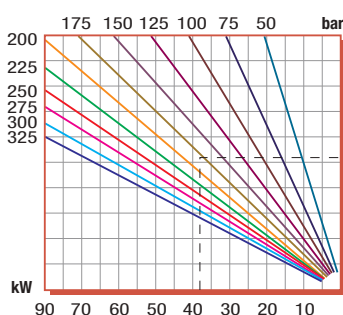
Pressione d'aspirazione: <i>Inlet pressure:</i>	0.7 ÷ 1.5 bar (assoluti/absolute)
Campo viscosità lavoro: <i>Operating viscosity range:</i>	12 ÷ 100 cSt
Temperatura fluido °C (t): <i>Fluid temperature °C (t):</i>	-10° + 80° C

Pressione Lavoro <i>Working Press.</i>	P2	Contaminazione / <i>Contamination</i>		Filtro / <i>Filter</i> βx = 75
		NAS 1638	ISO 4406	
≤ 200 bar		12	21/18	40 μm
≥ 200 bar		11	20/17	25 μm

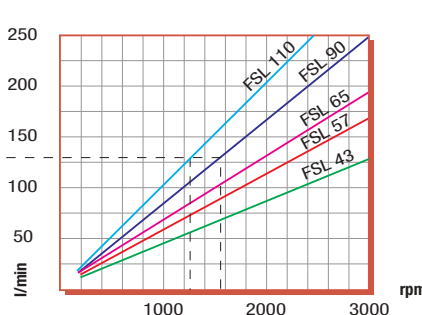
◀ **FILTRAZIONE CONSIGLIATA (ritorno o mandata)**
RECOMMENDED FILTERING (return or outlet)

TIPO / <i>TYPE</i>			FSL43	FSL57	FSL65	FSL90	FSL110	
Cilindrata <i>Displacement</i>	Vg	cm ³ /n cm ³ /rev.	43	57	65	84	105	
Pressione massima continua <i>Max continuous operating pressure</i>	P1	bar	280	240	220	210	180	
Pressione massima intermittente <i>Max intermitt. operat. press.</i>	P2		(max 30 s)	305	265	240	230	200
Pressione massima di picco <i>Max peak pressure</i>	P3		(≤ 0.1 s)	325	285	250	250	220
Velocità massima intermittente <i>Max intermittent speed</i>	n3	(P ≤ 20 bar)	n/min r.p.m.	3500	3500	3500	3500	3000
Velocità massima continua <i>Max continuous speed</i>	n1	(≤ P1)		2200	2000	1800	1500	1500
Velocità minima intermittente <i>Min intermittent speed</i>	n4	(≤ P2 x 0.5) (max 30 s)		350	300	300	300	300

POTENZA ASSORBITA / *POWER INPUT*

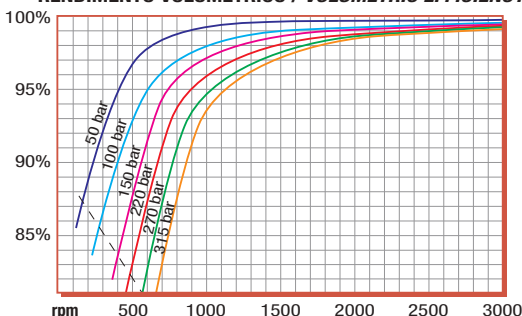


PORTATA / *CAPACITY*

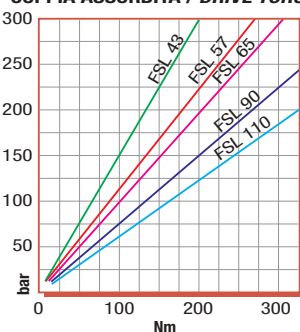


DIAGRAMMI / *DIAGRAMS*

RENDIMENTO VOLUMETRICO / *VOLUMETRIC EFFICIENCY*



COPIA ASSORBITA / *DRIVE TORQUE*



RILIEVI ESEGUITI CON OLIO
ISO VG 46 A 50° C (√= 30 cSt)
THE ABOVE SPECIFICATIONS
REFER TO OIL TYPE ISO
VG 46 AT 50° C (√=30 cSt)



FZS

Pompa ad Ingranaggi Gear Pump

CODICE DI ORDINAZIONE / ORDERING CODE

200 **FZS** 015 **D S** 2

TIPO/TYPE
(SAE "B" 13 DENTI)
(SAE "B" 13 TEETH)

CILINDRATA/DISPLACEMENT

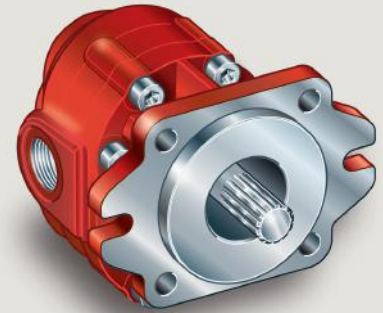
ROTAZIONE/ROTATION
D = DESTRO/CLOCKWISE
S = SINISTRO/ANTICLOCKWISE

FILETTATURA IN POLLICI GAS
THREAD IN GAS INCHES

POMPA AD INGRANAGGI/GEAR PUMP

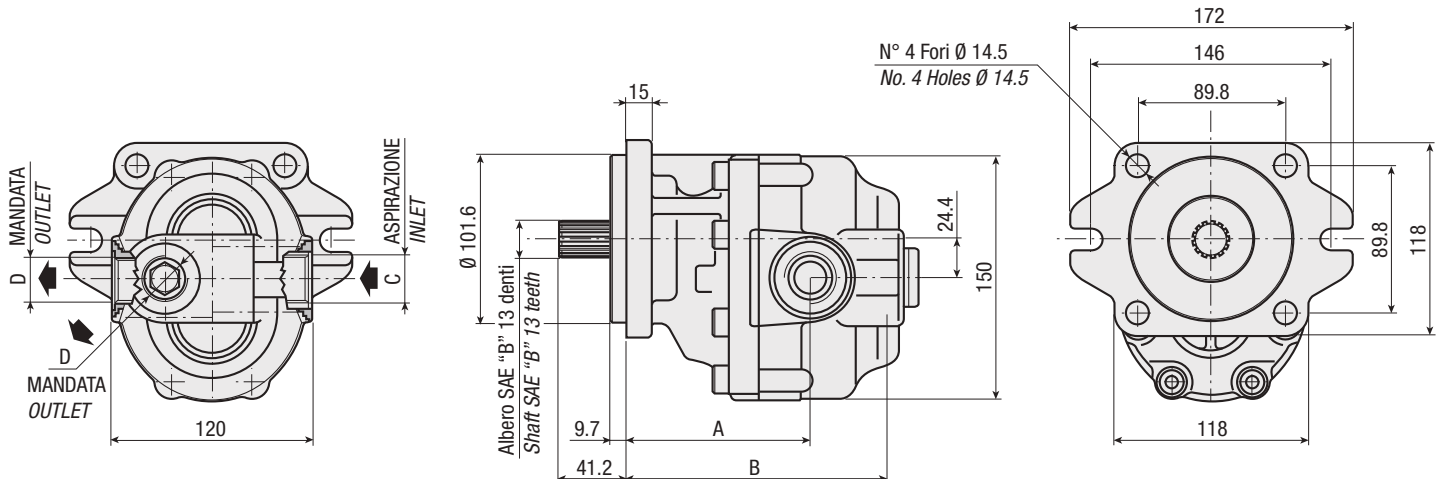
SAE

FZS 15
FZS 22
FZS 36
FZS 43
FZS 57
FZS 65
FZS 90
FZS 110



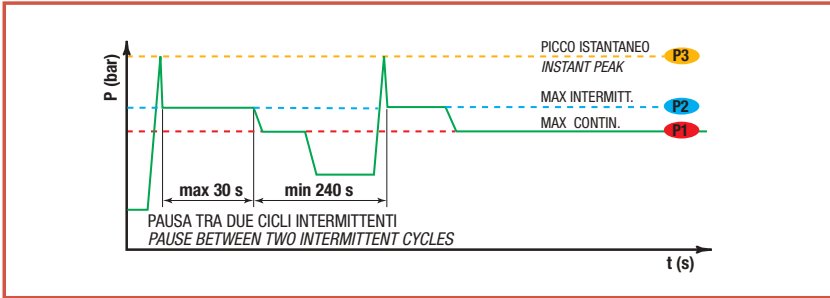
CARATTERISTICHE E DATI TECNICI / SPECIFICATIONS AND TECHNICAL DATA

TIPO TYPE	CODICE CODE	CILINDRATA DISPLACEMENT cm ³ /rev.	A mm	B mm	C ASPIRAZIONE INLET	D MANDATA OUTLET	PESO WEIGHT kg
FZS 15	200FZS015 D S 2	15	96.5	142.5	3/4" G	1/2" G	11.8
FZS 22	200FZ0022 D S 2	22	101.5	147.5	3/4" G	1/2" G	12.3
FZS 36	200FZS036 D S 2	36	99.5	157.5	3/4" G	1/2" G	13
FZS 43	200FZS043 D S 2	43	104,5	104.5	1" G	3/4" G	13.4
FZS 57	200FZS057 D S 2	57	111.5	172.5	1" G	3/4" G	14.2
FZ0 65	200FZS065 D S 2	65	116.5	177.5	1" G	3/4" G	14.7
FZS 90	200FZS090 D S 2	84	126	192.5	1" 1/4 G	1" G	15.7
FZS 110	200FZS110 D S 2	105	138	204.5	1" 1/4 G	1" G	17.5



DATI TECNICI / TECHNICAL DATA

ESEMPIO CICLI LAVORO / EXAMPLE OF WORKING CYCLES



Pressione d'aspirazione: Inlet pressure:	0.7 ÷ 1.5 bar (assoluti/absolute)
Campo viscosità lavoro: Operating viscosity range:	12 ÷ 100 cSt
Temperatura fluido °C (t): Fluid temperature °C (t):	-10° + 80° C

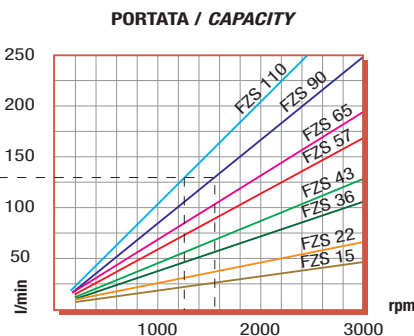
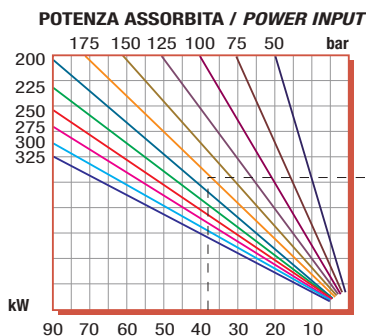
CONVERSIONI UNITÀ DI MISURA - MEASUREMENT UNIT CONVERSIONS

1 m = 39.370 in	1 Kw = 1.341 hp
1 kg = 2.204 lb	1 l/min = 0.264 gpm
1 bar = 14.503 psi	1 N·m = 0.737 lbf·ft

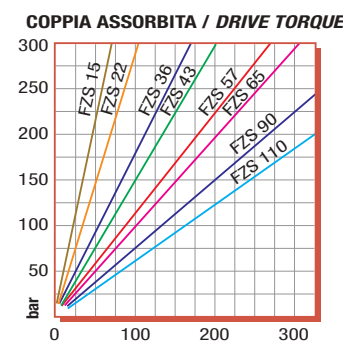
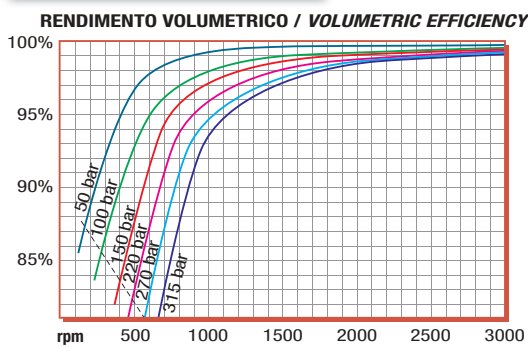
Pressione Lavoro Working Press. P2	Contaminazione / Contamination NAS 1638		Filtro / Filter βx = 75
	ISO 4406		
≤ 200 bar	12	21/18	40 μm
≥ 200 bar	11	20/17	25 μm

FILTRAZIONE CONSIGLIATA (ritorno o mandata)
RECOMMENDED FILTERING (return or outlet)

TIPO / TYPE			FZS15	FZS22	FZS36	FZS43	FZS57	FZS65	FZS90	FZS110
			Cilindrata Displacement	Vg	cm ³ /n cm ³ /rev.	15	22	36	43	57
Pressione massima continua Max continuous operating pressure	P1		315	305	300	280	240	220	210	180
Pressione massima intermittente Max intermitt. operat. pressure	(max 30 s)	P2	340	330	325	305	265	240	230	200
Pressione massima di picco Max peak pressure	(≤ 0.1 s)	P3	450	450	450	400	380	350	300	250
Velocità massima intermittente Max intermittent speed	(P ≤ 20 bar)	n3	4000	4000	3500	3500	3500	3500	3500	3000
Velocità massima continua Max continuous speed	(≤ P1)	n1	2500	2500	2200	2200	2000	1800	1500	1500
Velocità minima intermittente Min intermittent speed	(≤ P2 x 0.5) (max 30 s)	n4	450	450	350	350	300	300	300	300



DIAGRAMMI / DIAGRAMS



RILIEVI ESEGUITI CON OLIO
ISO VG 46 A 50° C (√= 30 cSt)
THE ABOVE SPECIFICATIONS
REFER TO OIL TYPE ISO
VG 46 AT 50° C (√=30 cSt)

Hydrocar si riserva il diritto di apportare senza alcun preavviso qualsiasi modifica alle caratteristiche tecniche indicate nel presente catalogo. I dati ivi riportati non sono vincolanti.
Hydrocar reserves the right to modify the technical data mentioned in this catalogue without notice. The herewith mentioned data are not bounding.



TANDEM FZOT

Pompa ad Ingranaggi Gear Pump

CODICE DI ORDINAZIONE / ORDERING CODE

200 **FZO** 036 **D** **T**

S

21 UNI 222

ROTAZIONE/ROTATION
D = DESTRO/CLOCKWISE
S = SINISTRO/ANTICLOCKWISE

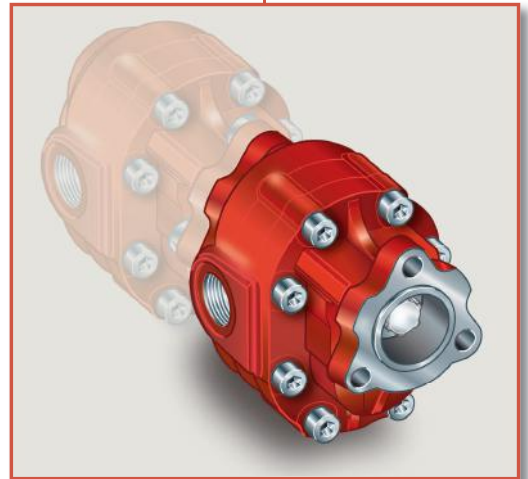
CILINDRATA/DISPLACEMENT

TIPO/TYPE

POMPA AD INGRANAGGI/GEAR PUMP

UNI
21-222

FZO 36 T
FZO 43 T
FZO 57 T
FZO 65 T
FZO 90 T



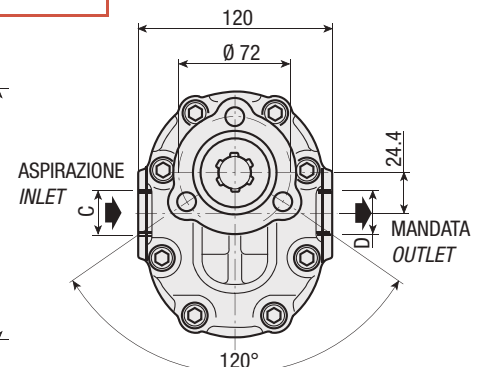
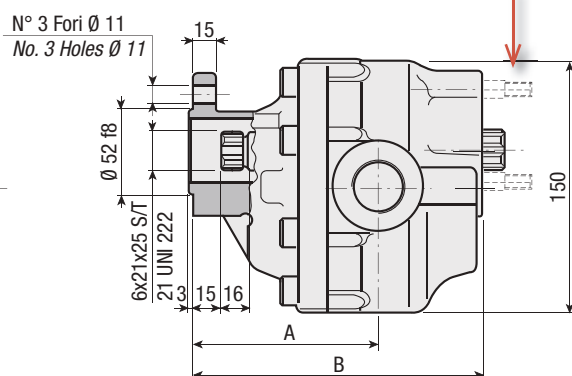
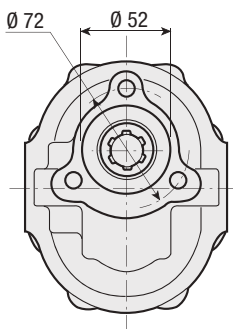
CARATTERISTICHE E DATI TECNICI / SPECIFICATIONS AND TECHNICAL DATA

TIPO TYPE	CODICE CODE	CILINDRATA DISPLACEMENT cm ³ /rev.	A mm	B mm	C ASPIRAZIONE INLET	D MANDATA OUTLET	PESO WEIGHT kg
FZO 36 T	200FZO036 D S T	36	99.5	160	3/4" G	1/2" G	9.3
FZO 43 T	200FZO043 D S T	43	104.5	165	1" G	3/4" G	10.5
FZO 57 T	200FZO057 D S T	57	111.5	175	1" G	3/4" G	11.3
FZO 65 T	200FZO065 D S T	65	116.5	180	1" G	3/4" G	11.8
FZO 90 T	200FZO090 D S T	84	126	195	1" 1/4 G	1" G	12.8

KIT ACCOPPIAMENTO POSTERIORE:
per pompa ad ingranaggi tipo

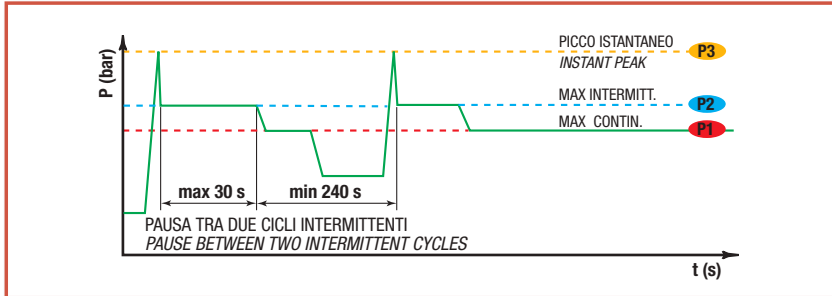
REAR MOUNTING KIT:
for gear pump type

PE	
B	198KPP02000
NF	
FZO	
NFL	198KPP03000
GP	



DATI TECNICI / TECHNICAL DATA

ESEMPIO CICLI LAVORO / EXAMPLE OF WORKING CYCLES

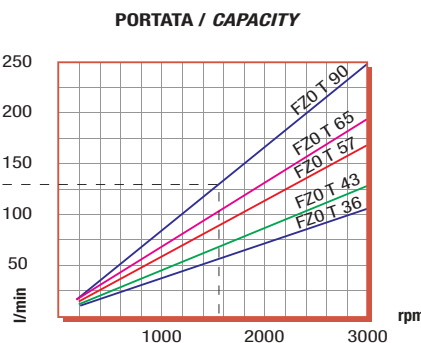
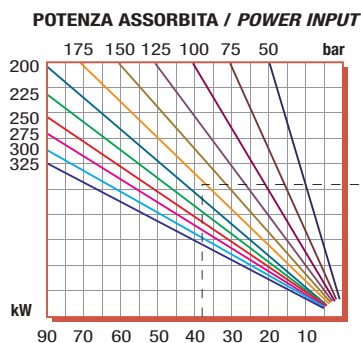


Pressione d'aspirazione: <i>Inlet pressure:</i>	0.7 ÷ 1.5 bar (assoluti/absolute)
Campo viscosità lavoro: <i>Operating viscosity range:</i>	12 ÷ 100 cSt
Temperatura fluido °C (t): <i>Fluid temperature °C (t):</i>	-10° + 80° C

Pressione Lavoro <i>Working Press.</i>	P2	Contaminazione / <i>Contamination</i>		Filtro / <i>Filter</i> βx = 75
		NAS 1638	ISO 4406	
≤ 200 bar		12	21/18	40 μm
≥ 200 bar		11	20/17	25 μm

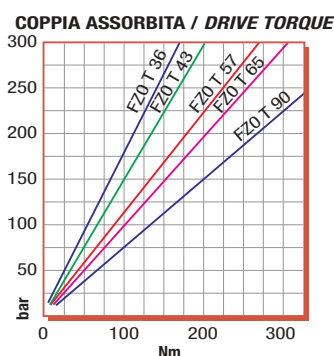
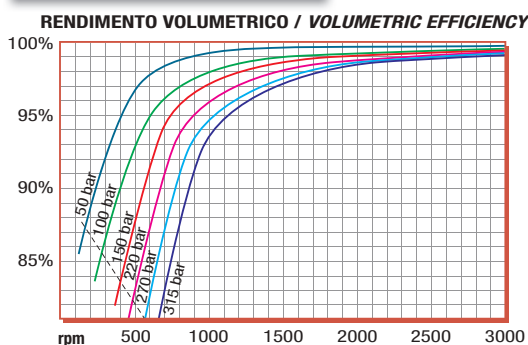
◀ **FILTRAZIONE CONSIGLIATA (ritorno o mandata)**
RECOMMENDED FILTERING (return or outlet)

TIPO / <i>TYPE</i>			FZ036T	FZ043T	FZ057T	FZ065T	FZ090T	
Cilindrata <i>Displacement</i>	Vg	cm ³ /n cm ³ /rev.	36	43	57	65	84	
Pressione massima continua <i>Max continuous operating pressure</i>	P1	bar	300	280	240	220	210	
Pressione massima intermittente <i>Max intermitt. operat. press.</i>	(max 30 s)		P2	325	305	265	240	230
Pressione massima di picco <i>Max peak pressure</i>	(≤ 0.1 s)		P3	450	400	380	350	300
Velocità massima intermittente <i>Max intermittent speed</i>	(P ≤ 20 bar)	n3	3500	3500	3500	3500	3500	
Velocità massima continua <i>Max continuous speed</i>	(≤ P1)	n1	2200	2200	2000	1800	1500	
Velocità minima intermittente <i>Min intermittent speed</i>	(≤ P2 x 0.5) (max 30 s)	n4	350	350	300	300	300	



Coppia massima prelevabile
sull'albero della 1° pompa 300 Nm.
Max torque on the primary pump
300 Nm.

DIAGRAMMI / DIAGRAMS



RILIEVI ESEGUITI CON OLIO
ISO VG 46 A 50° C (√= 30 cSt)
THE ABOVE SPECIFICATIONS
REFER TO OIL TYPE
ISO VG 46 AT 50° C (√=30 cSt)



TANDEM FZOV

Pompa ad Ingranaggi
Gear Pump

CODICE DI ORDINAZIONE / ORDERING CODE

200 **FZO** 036 **D S** V

DIN 5462

ROTAZIONE/ROTATION
D = DESTRO/CLOCKWISE
S = SINISTRO/ANTICLOCKWISE

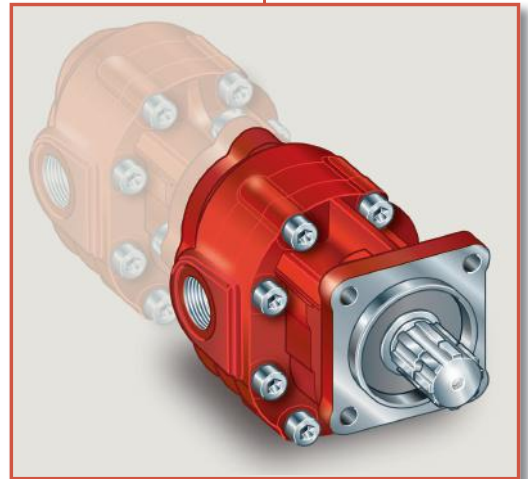
CILINDRATA/DISPLACEMENT

TIPO/TYPE

POMPA AD INGRANAGGI/GEAR PUMP

DIN
5 4 6 2
SE

FZO 36 V
FZO 43 V
FZO 57 V
FZO 65 V
FZO 90 V



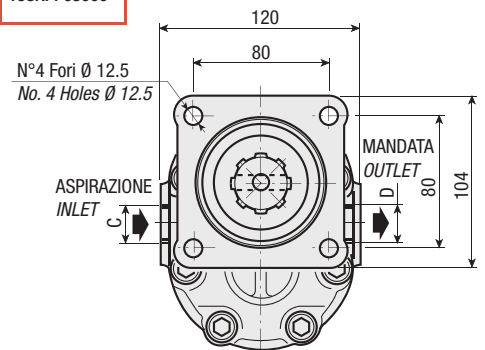
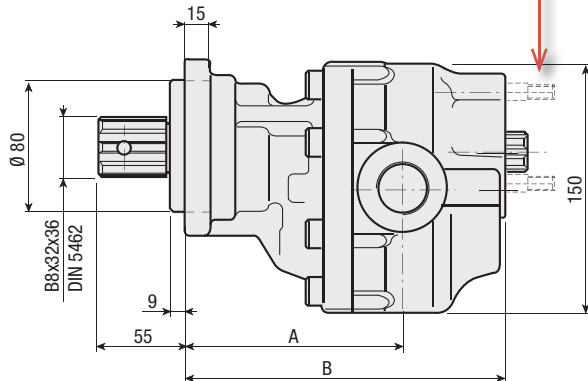
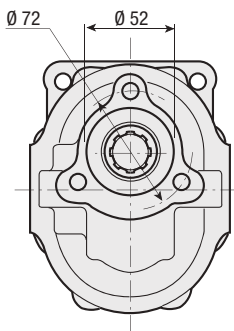
CARATTERISTICHE E DATI TECNICI / SPECIFICATIONS AND TECHNICAL DATA

TIPO TYPE	CODICE CODE	CILINDRATA DISPLACEMENT cm ³ /rev.	A mm	B mm	C ASPIRAZIONE INLET	D MANDATA OUTLET	PESO WEIGHT kg
FZO 36 V	200FZ0036 D S V	36	126	186.5	3/4" G	1/2" G	12.2
FZO 43 V	200FZ0043 D S V	43	131	191.5	1" G	3/4" G	12.6
FZO 57 V	200FZ0057 D S V	57	138	201.5	1" G	3/4" G	13.4
FZO 65 V	200FZ0065 D S V	65	143	206.5	1" G	3/4" G	13.9
FZO 90 V	200FZ0090 D S V	84	152.5	221.5	1" 1/4 G	1" G	14.9

KIT ACCOPPIAMENTO POSTERIORE:
per pompa ad ingranaggi tipo

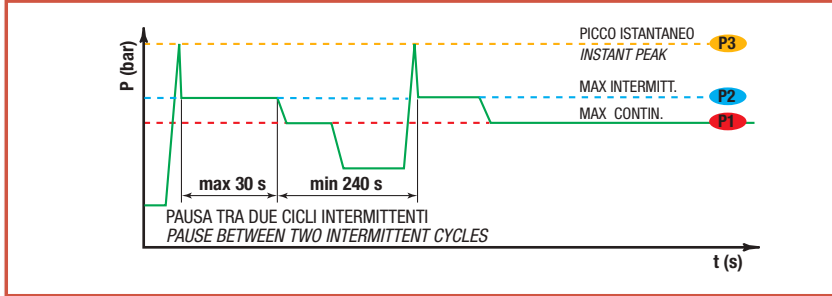
REAR MOUNTING KIT:
for gear pump type

PE	
B	198KPP02000
NF	
FZO	
NFL	198KPP03000
GP	



DATI TECNICI / TECHNICAL DATA

ESEMPIO CICLI LAVORO / EXAMPLE OF WORKING CYCLES

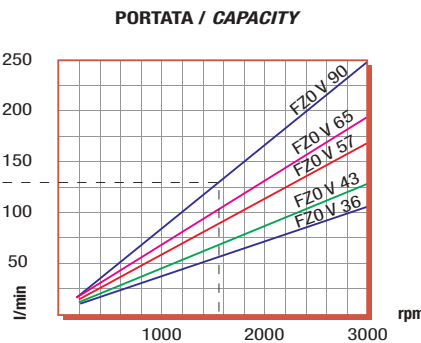
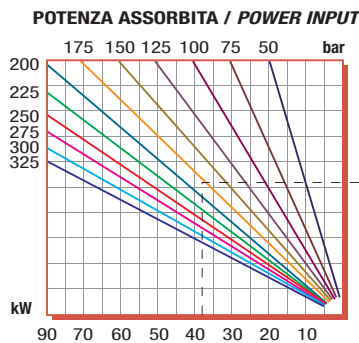


Pressione d'aspirazione: Inlet pressure:	0.7 ÷ 1.5 bar (assoluti/absolute)
Campo viscosità lavoro: Operating viscosity range:	12 ÷ 100 cSt
Temperatura fluido °C (t): Fluid temperature °C (t):	-10° + 80° C

Pressione Lavoro Working Press. P2	Contaminazione / Contamination		Filtro / Filter βx = 75
	NAS 1638	ISO 4406	
≤ 200 bar	12	21/18	40 μm
≥ 200 bar	11	20/17	25 μm

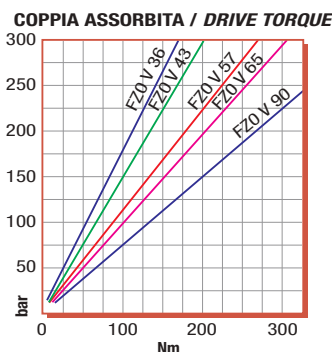
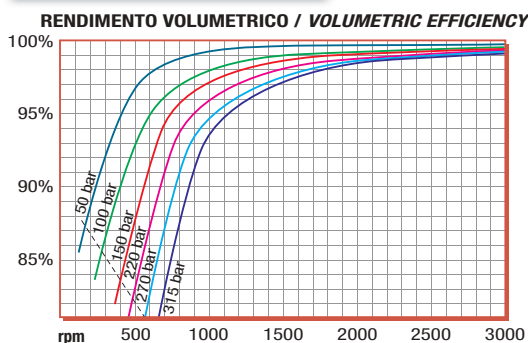
◀ **FILTRAZIONE CONSIGLIATA (ritorno o mandata)**
RECOMMENDED FILTERING (return or outlet)

TIPO / TYPE		FZ036V	FZ043V	FZ057V	FZ065V	FZ090V
Cilindrata Displacement	Vg cm ³ /n cm ³ /rev.	36	43	57	65	84
Pressione massima continua Max continuous operating pressure	P1	300	280	240	220	210
Pressione massima intermittente Max intermitt. operat. press.	(max 30 s) P2	325	305	265	240	230
Pressione massima di picco Max peak pressure	(≤ 0.1 s) P3	450	400	380	350	300
Velocità massima intermittente Max intermittent speed	(P ≤ 20 bar) n3	3500	3500	3500	3500	3500
Velocità massima continua Max continuous speed	(≤ P1) n1	2200	2200	2000	1800	1500
Velocità minima intermittente Min intermittent speed	(≤ P2 x 0.5) (max 30 s) n4	350	350	300	300	300



Coppia massima prelevabile
sull'albero della 1° pompa 300 Nm.
Max torque on the primary pump
300 Nm.

DIAGRAMMI / DIAGRAMS

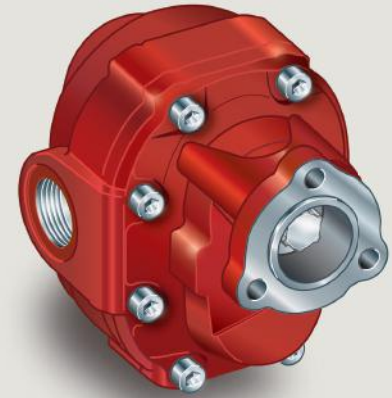


RILIEVI ESEGUITI CON OLIO
ISO VG 46 A 50° C (√= 30 cSt)
THE ABOVE SPECIFICATIONS
REFER TO OIL TYPE ISO
VG 46 AT 50° C (√=30 cSt)



FZH

Pompa ad Ingranaggi Gear Pump



CODICE DI ORDINAZIONE / ORDERING CODE

200 **FZH** 075 **D** 0

S

21 UNI 222

ROTAZIONE/ROTATION
D = DESTRO/CLOCKWISE
S = SINISTRO/ANTICLOCKWISE

CILINDRATA/DISPLACEMENT

TIPO/TYPE

POMPA AD INGRANAGGI/GEAR PUMP

UNI
21-222

FZH 75

FZH 85

FZH 100

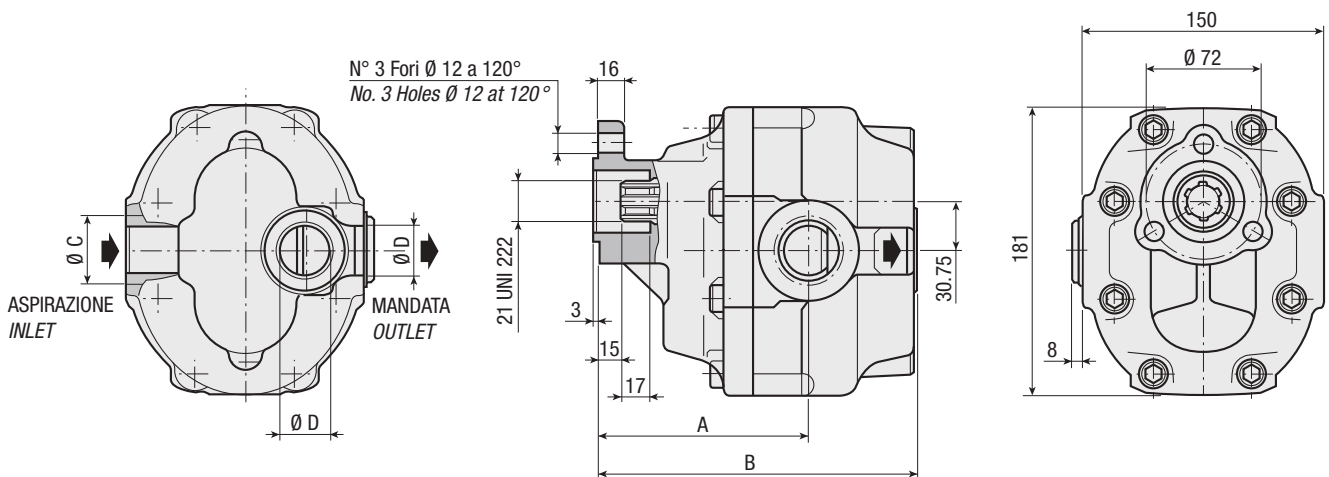
FZH 116

FZH 130

FZH 150

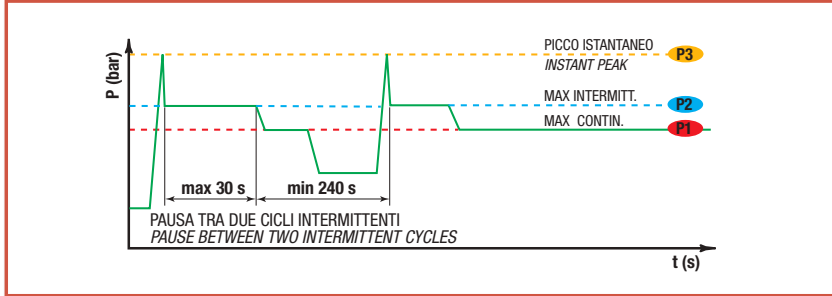
CARATTERISTICHE E DATI TECNICI / SPECIFICATIONS AND TECHNICAL DATA

TIPO TYPE	CODICE CODE	CILINDRATA DISPLACEMENT cm ³ /rev.	A mm	B mm	C ASPIRAZIONE INLET	D MANDATA OUTLET	PESO WEIGHT kg
FZH 75	200FZH075 D S 0	73	127	194	1" 1/4 G	1" G	16.3
FZH 85	200FZH085 D S 0	84	129.5	198	1" 1/4 G	1" G	17.2
FZH 100	200FZH100 D S 0	100	139	204	1" 1/4 G	1" G	18.1
FZH 116	200FZH116 D S 0	116	139	210	1" 1/4 G	1" G	19
FZH 130	200FZH130 D S 0	132	135	216	1" 1/2 G	1" G	19.9
FZH 150	200FZH150 D S 0	148	143	222	1" 1/2 G	1" G	20.8



DATI TECNICI / TECHNICAL DATA

ESEMPIO CICLI LAVORO / EXAMPLE OF WORKING CYCLES



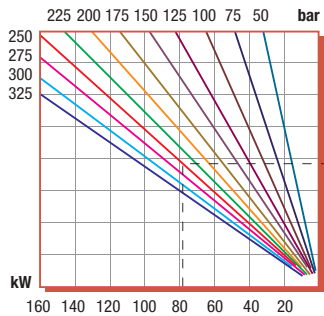
Pressione d'aspirazione: Inlet pressure:	0.7 ÷ 1.5 bar (assoluti/absolute)
Campo viscosità lavoro: Operating viscosity range:	12 ÷ 100 cSt
Temperatura fluido °C (t): Fluid temperature °C (t):	-10° + 80° C

Pressione Lavoro Working Press. P2	Contaminazione / Contamination		Filtro / Filter βx = 75
	NAS 1638	ISO 4406	
≤ 200 bar	12	21/18	40 μm
≥ 200 bar	11	20/17	25 μm

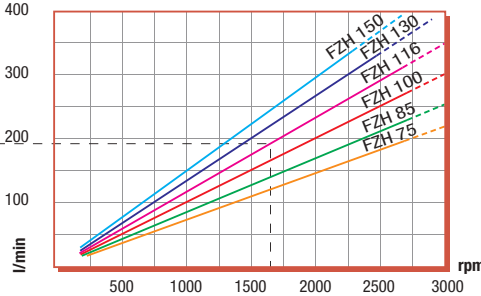
◀ **FILTRAZIONE CONSIGLIATA (ritorno o mandata)**
RECOMMENDED FILTERING (return or outlet)

TIPO / TYPE			FZH75	FZH85	FZH100	FZH116	FZH130	FZH150
	Vg	cm ³ /n cm ³ /rev.	73	84	100	116	132	148
Pressione massima continua Max continuous operating pressure	P1	bar	300	250	250	240	210	180
Pressione massima intermittente Max intermitt. operat. press. (max 30 s)	P2		320	280	270	260	210	180
Pressione massima di picco Max peak pressure (≤ 0.1 s)	P3		450	375	375	340	315	270
Velocità massima intermittente Max intermittent speed (P ≤ 20 bar)	n3	n/min r.p.m.	3800	3500	3500	3000	3000	3000
Velocità massima continua Max continuous speed (≤ P1)	n1		1800	1800	1500	1500	1500	1500
Velocità minima intermittente Min intermittent speed (≤ P2 x 0.5) (max 30 s)	n4		300	300	250	250	250	250

POTENZA ASSORBITA / POWER INPUT

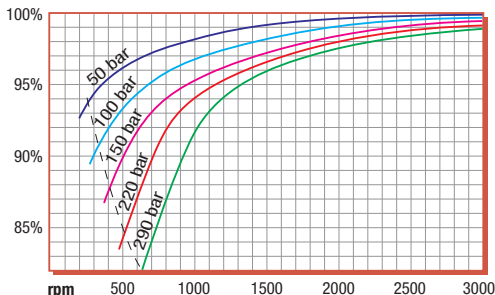


PORTATA / CAPACITY

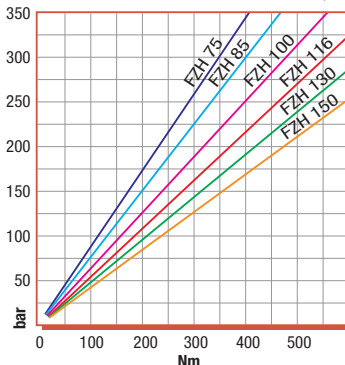


DIAGRAMMI / DIAGRAMS

RENDIMENTO VOLUMETRICO / VOLUMETRIC EFFICIENCY



COPPIA ASSORBITA / DRIVE TORQUE



RILIEVI ESEGUITI CON OLIO
ISO VG 46 A 50° C (√= 30 cSt)
THE ABOVE SPECIFICATIONS
REFER TO OIL TYPE ISO
VG 46 AT 50° C (√=30 cSt)



FZH

Pompa ad Ingranaggi Gear Pump

CODICE DI ORDINAZIONE / ORDERING CODE

200 **FZH** 075 **D S**

TIPO/TYPE

CILINDRATA/DISPLACEMENT

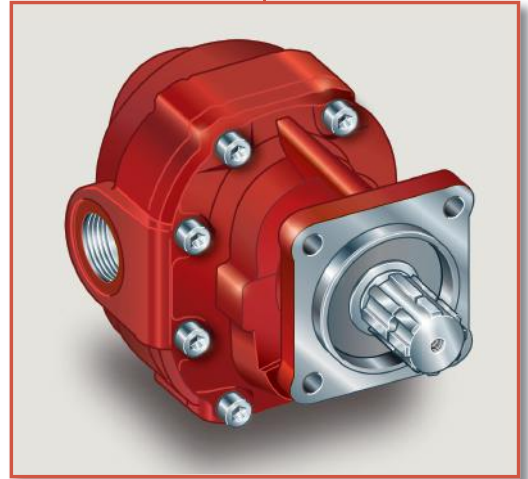
ROTAZIONE/ROTATION
D = DESTRO/CLOCKWISE
S = SINISTRO/ANTICLOCKWISE

DIN 5462

POMPA AD INGRANAGGI/GEAR PUMP

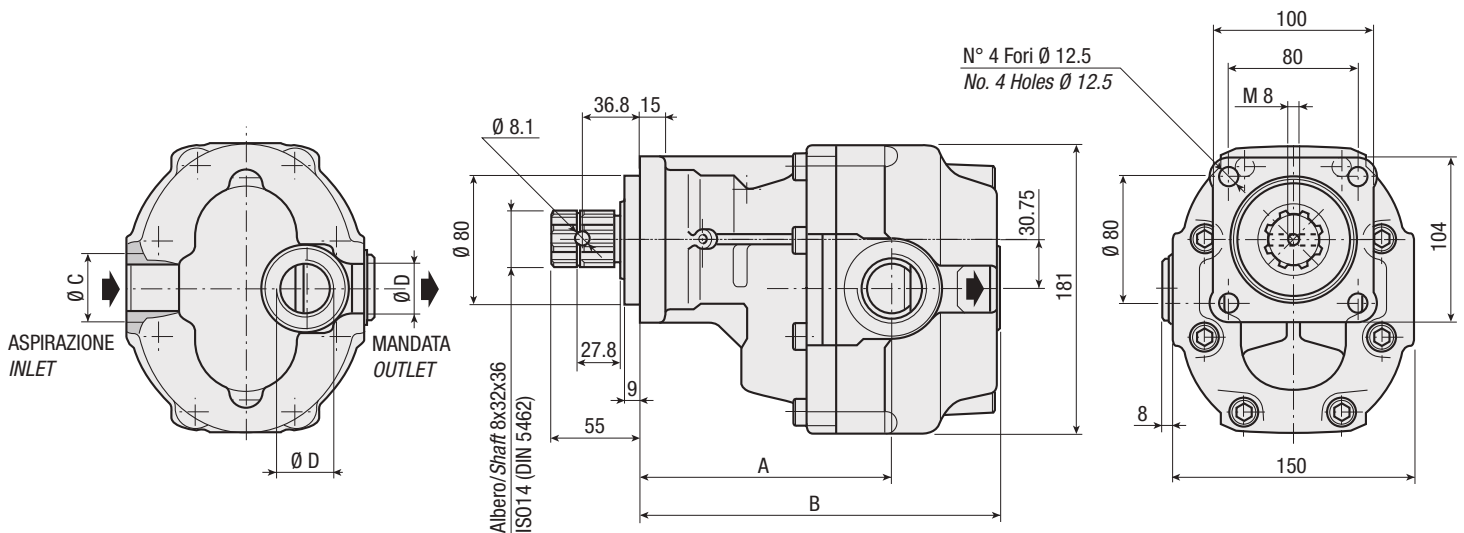
DIN
5 4 6 2
SE

FZH 75
FZH 85
FZH 100
FZH 116
FZH 130
FZH 150



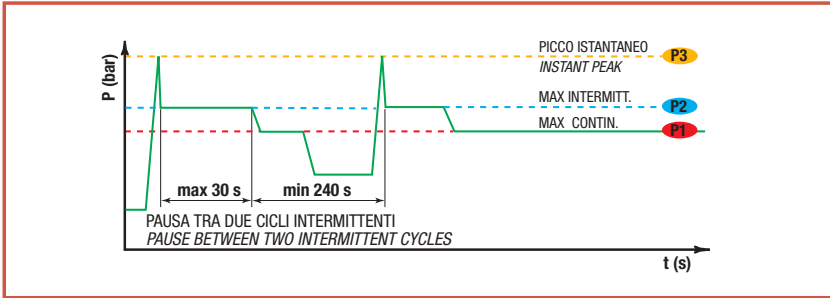
CARATTERISTICHE E DATI TECNICI / SPECIFICATIONS AND TECHNICAL DATA

TIPO TYPE	CODICE CODE	CILINDRATA DISPLACEMENT cm ³ /rev.	A mm	B mm	C ASPIRAZIONE INLET	D MANDATA OUTLET	PESO WEIGHT kg
FZH 75	200FZH075 D S	73	127.5	194.5	1" 1/4 G	1" G	18
FZH 85	200FZH085 D S	84	130	198.5	1" 1/4 G	1" G	18.9
FZH 100	200FZH100 D S	100	139.5	204.5	1" 1/4 G	1" G	19.8
FZH 116	200FZH116 D S	116	139.5	210.5	1" 1/4 G	1" G	20.7
FZH 130	200FZH130 D S	132	135.5	216.5	1" 1/2 G	1" G	21.6
FZH 150	200FZH150 D S	148	143.5	222.5	1" 1/2 G	1" G	22.5



DATI TECNICI / TECHNICAL DATA

ESEMPIO CICLI LAVORO / EXAMPLE OF WORKING CYCLES



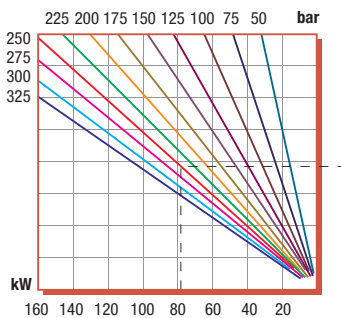
Pressione d'aspirazione: Inlet pressure:	0.7 ÷ 1.5 bar (assoluti/absolute)
Campo viscosità lavoro: Operating viscosity range:	12 ÷ 100 cSt
Temperatura fluido °C (t): Fluid temperature °C (t):	-10° + 80° C

Pressione Lavoro Working Press. P2	Contaminazione / Contamination		Filtro / Filter βx = 75
	NAS 1638	ISO 4406	
≤ 200 bar	12	21/18	40 μm
≥ 200 bar	11	20/17	25 μm

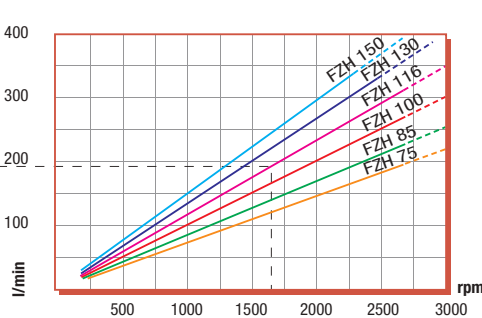
◀ **FILTRAZIONE CONSIGLIATA (ritorno o mandata)**
RECOMMENDED FILTERING (return or outlet)

TIPO / TYPE			FZH75	FZH85	FZH100	FZH116	FZH130	FZH150
	Vg	cm ³ /n cm ³ /rev.	73	84	100	116	132	148
Cilindrata Displacement								
Pressione massima continua Max continuous operating pressure	P1	bar	300	270	260	250	230	190
Pressione massima intermittente Max intermitt. operat. press.	(max 30 s) P2		320	310	290	280	270	230
Pressione massima di picco Max peak pressure	(≤ 0.1 s) P3		450	375	375	340	315	270
Velocità massima intermittente Max intermittent speed	(P ≤ 20 bar) n3	n/min r.p.m.	3800	3500	3500	3000	3000	3000
Velocità massima continua Max continuous speed	(≤ P1) n1		1800	1800	1500	1500	1500	1500
Velocità minima intermittente Min intermittent speed	(≤ P2 x 0.5) (max 30 s) n4		300	300	250	250	250	250

POTENZA ASSORBITA / POWER INPUT

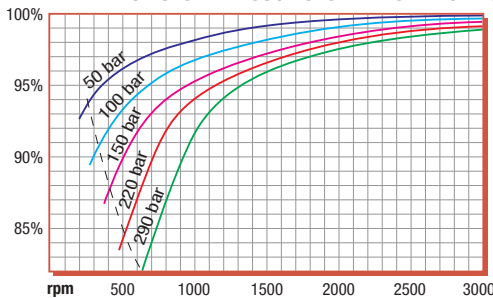


PORTATA / CAPACITY

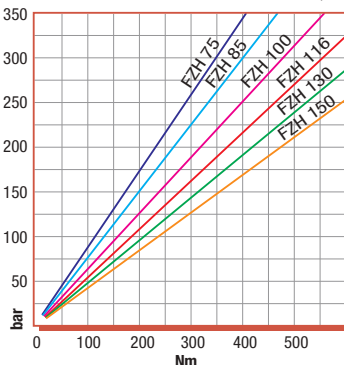


DIAGRAMMI / DIAGRAMS

RENDIMENTO VOLUMETRICO / VOLUMETRIC EFFICIENCY



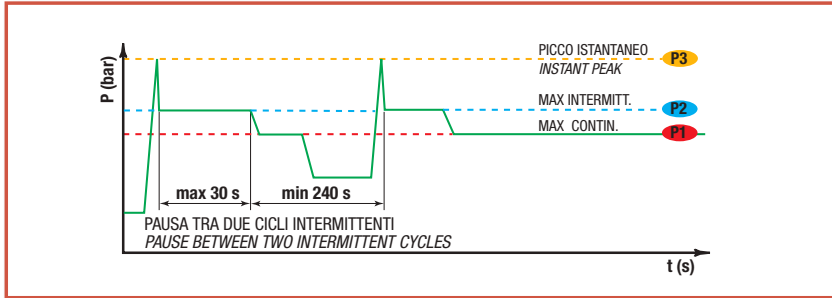
COPPIA ASSORBITA / DRIVE TORQUE



RILIEVI ESEGUITI CON OLIO
ISO VG 46 A 50° C (√= 30 cSt)
THE ABOVE SPECIFICATIONS
REFER TO OIL TYPE ISO
VG 46 AT 50° C (√=30 cSt)

DATI TECNICI / TECHNICAL DATA

ESEMPIO CICLI LAVORO / EXAMPLE OF WORKING CYCLES



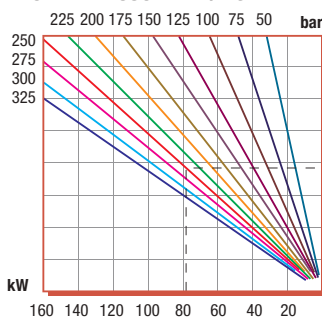
Pressione d'aspirazione: Inlet pressure:	0.7 ÷ 1.5 bar (assoluti/absolute)
Campo viscosità lavoro: Operating viscosity range:	12 ÷ 100 cSt
Temperatura fluido °C (t): Fluid temperature °C (t):	-10° + 80° C

Pressione Lavoro Working Press. P2	Contaminazione / Contamination		Filtro / Filter βx = 75
	NAS 1638	ISO 4406	
≤ 200 bar	12	21/18	40 μm
≥ 200 bar	11	20/17	25 μm

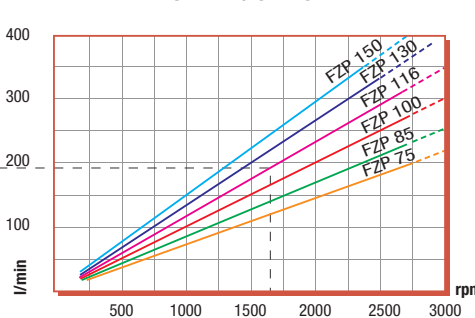
◀ **FILTRAZIONE CONSIGLIATA (ritorno o mandata)**
RECOMMENDED FILTERING (return or outlet)

TIPO / TYPE		FZP75	FZP85	FZP100	FZP116	FZP130	FZP150
Cilindrata Displacement	Vg cm ³ /n cm ³ /rev.	73	84	100	116	132	148
Pressione massima continua Max continuous operating pressure	P1	300	270	260	250	230	190
Pressione massima intermittente Max intermitt. operat. press.	(max 30 s) P2	320	310	290	280	270	230
Pressione massima di picco Max peak pressure	(≤ 0.1 s) P3	450	375	375	340	315	270
Velocità massima intermittente Max intermittent speed	(P ≤ 20 bar) n3	3800	3500	3500	3000	3000	3000
Velocità massima continua Max continuous speed	(≤ P1) n1	1800	1800	1500	1500	1500	1500
Velocità minima intermittente Min intermittent speed	(≤ P2 x 0.5) (max 30 s) n4	300	300	250	250	250	250

POTENZA ASSORBITA / POWER INPUT

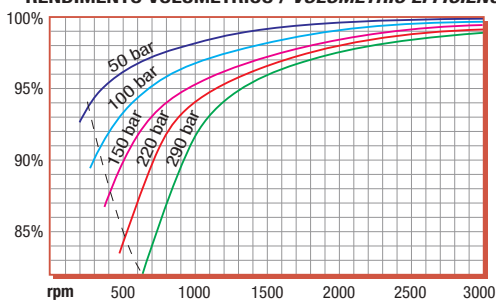


PORTATA / CAPACITY

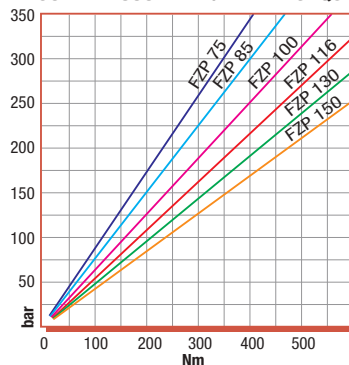


DIAGRAMMI / DIAGRAMS

RENDIMENTO VOLUMETRICO / VOLUMETRIC EFFICIENCY



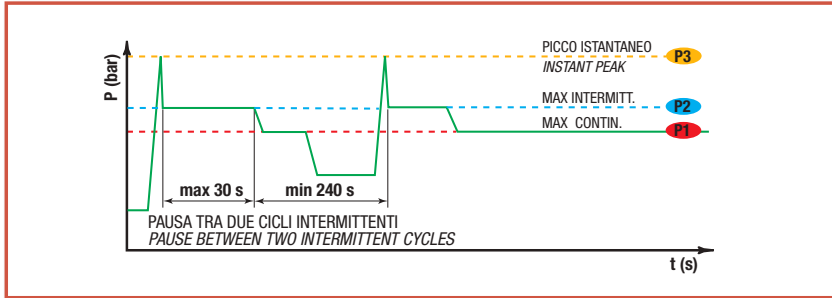
COPPIA ASSORBITA / DRIVE TORQUE



RILIEVI ESEGUITI CON OLIO
ISO VG 46 A 50° C (√= 30 cSt)
THE ABOVE SPECIFICATIONS
REFER TO OIL TYPE ISO
VG 46 AT 50° C (√=30 cSt)

DATI TECNICI / TECHNICAL DATA

ESEMPIO CICLI LAVORO / EXAMPLE OF WORKING CYCLES



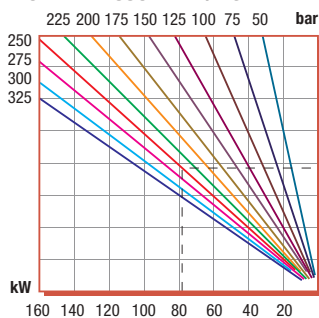
Pressione d'aspirazione: <i>Inlet pressure:</i>	0.7 ÷ 1.5 bar (assoluti/absolute)
Campo viscosità lavoro: <i>Operating viscosity range:</i>	12 ÷ 100 cSt
Temperatura fluido °C (t): <i>Fluid temperature °C (t):</i>	-10° + 80° C

Pressione Lavoro <i>Working Press. P2</i>	Contaminazione / <i>Contamination</i>		Filtro / <i>Filter</i> βx = 75
	NAS 1638	ISO 4406	
≤ 200 bar	12	21/18	40 μm
≥ 200 bar	11	20/17	25 μm

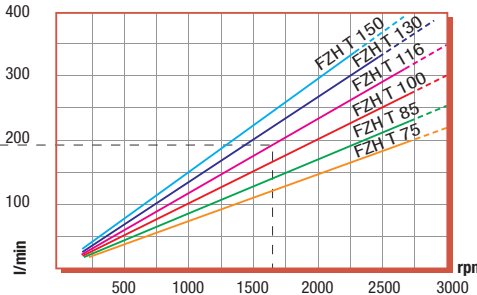
◀ **FILTRAZIONE CONSIGLIATA (ritorno o mandata)**
RECOMMENDED FILTERING (return or outlet)

TIPO / <i>TYPE</i>			FZH75T	FZH85T	FZH100T	FZH116T	FZH130T	FZH150T	
	Vg	cm ³ /n cm ³ /rev.	73	84	100	116	132	148	
Pressione massima continua <i>Max continuous operating pressure</i>	P1	bar	300	250	250	240	210	180	
Pressione massima intermittente <i>Max intermitt. operat. press.</i>	(max 30 s)		P2	320	280	270	260	210	180
Pressione massima di picco <i>Max peak pressure</i>	(≤ 0.1 s)		P3	450	375	375	340	315	270
Velocità massima intermittente <i>Max intermittent speed</i>	(P ≤ 20 bar)	n3	3800	3500	3500	3000	3000	3000	
Velocità massima continua <i>Max continuous speed</i>	(≤ P1)	n1	1800	1800	1500	1500	1500	1500	
Velocità minima intermittente <i>Min intermittent speed</i>	(≤ P2 x 0.5) (max 30 s)	n4	300	300	250	250	250	250	

POTENZA ASSORBITA / POWER INPUT



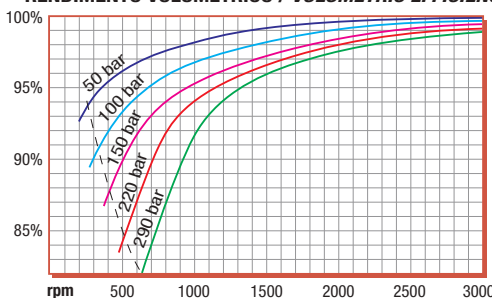
PORTATA / CAPACITY



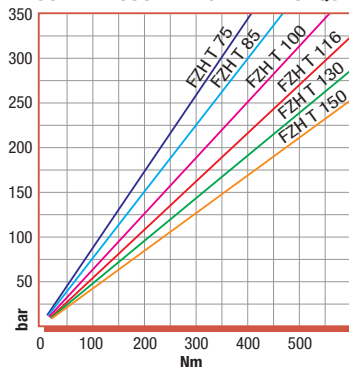
Coppia massima prelevabile
sull'albero della 1° pompa 300 Nm.
*Max torque on the primary pump
300 Nm.*

DIAGRAMMI / DIAGRAMS

RENDIMENTO VOLUMETRICO / VOLUMETRIC EFFICIENCY



COPPIA ASSORBITA / DRIVE TORQUE



RILIEVI ESEGUITI CON OLIO
ISO VG 46 A 50° C (√= 30 cSt)
*THE ABOVE SPECIFICATIONS
REFER TO OIL TYPE ISO
VG 46 AT 50° C (√=30 cSt)*



TANDEM FZHV

Pompa ad Ingranaggi
Gear Pump

CODICE DI ORDINAZIONE / ORDERING CODE

200 FZH 075 D S V

D
S

DIN 5462

ROTAZIONE/ROTATION
D = DESTRO/CLOCKWISE
S = SINISTRO/ANTICLOCKWISE

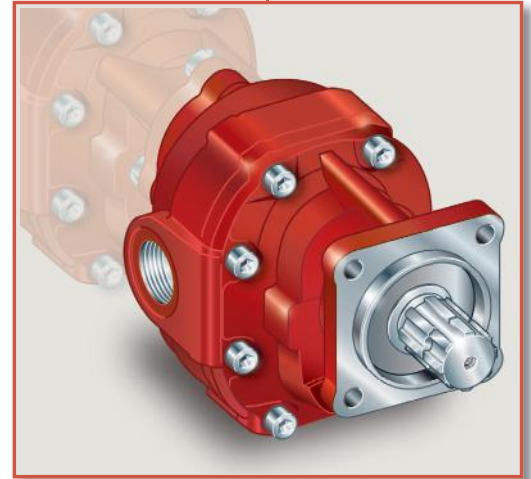
CILINDRATA/DISPLACEMENT

TIPO/TYPE

POMPA AD INGRANAGGI/GEAR PUMP

DIN
5 4 6 2
SE

FZH 75 V
FZH 85 V
FZH 100 V
FZH 116 V
FZH 130 V
FZH 150 V



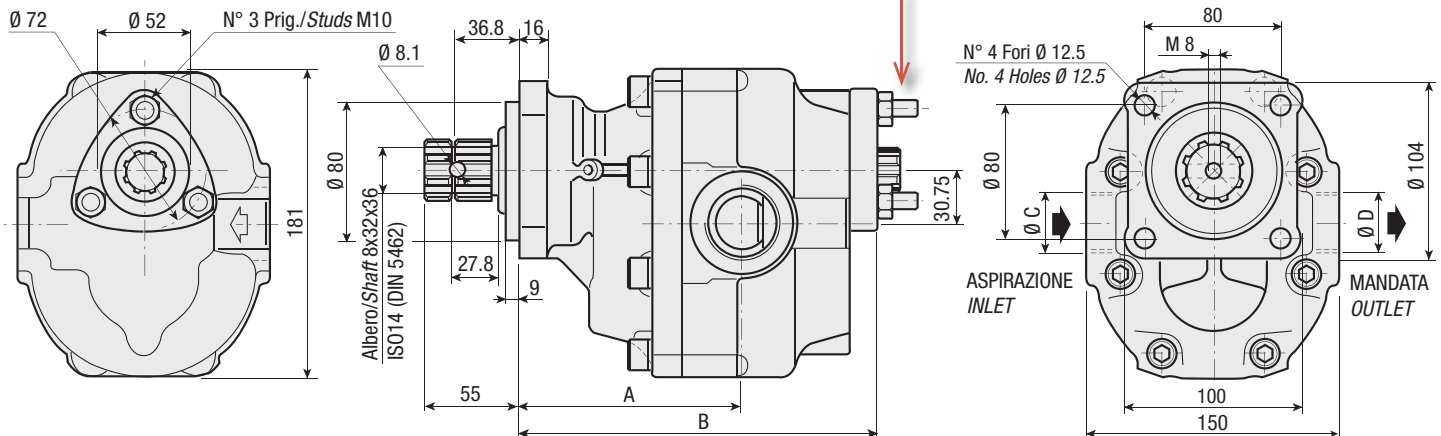
CARATTERISTICHE E DATI TECNICI / SPECIFICATIONS AND TECHNICAL DATA

TIPO TYPE	CODICE CODE	CILINDRATA DISPLACEMENT cm ³ /rev.	A mm	B mm	C ASPIRAZIONE INLET	D MANDATA OUTLET	PESO WEIGHT kg
FZH 75 V	200FZH075 D S V	73	127.5	205	1" 1/4 G	1" G	18.5
FZH 85 V	200FZH085 D S V	84	130	209	1" 1/4 G	1" G	19.4
FZH 100 V	200FZH100 D S V	100	139.5	215	1" 1/4 G	1" G	20.3
FZH 116 V	200FZH116 D S V	116	139.5	221	1" 1/4 G	1" G	21.2
FZH 130 V	200FZH130 D S V	132	135.5	227	1" 1/2 G	1" G	22.1
FZH 150 V	200FZH150 D S V	148	143.5	233	1" 1/2 G	1" G	23

KIT ACCOPPIAMENTO POSTERIORE:
per pompa ad ingranaggi tipo

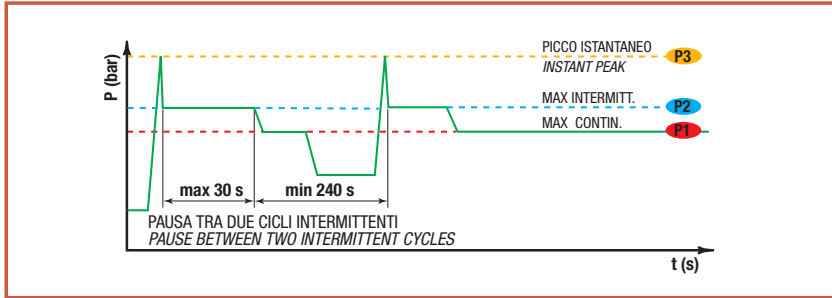
REAR MOUNTING KIT:
for gear pump type

PE	198KPP09000
B	
NF	
FZO	198KPP10000
NFL	
GP	



DATI TECNICI / TECHNICAL DATA

ESEMPIO CICLI LAVORO / EXAMPLE OF WORKING CYCLES



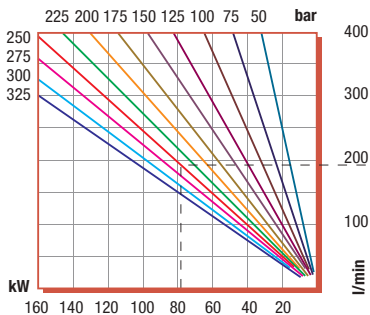
Pressione d'aspirazione: Inlet pressure:	0.7 ÷ 1.5 bar (assoluti/absolute)
Campo viscosità lavoro: Operating viscosity range:	12 ÷ 100 cSt
Temperatura fluido °C (t): Fluid temperature °C (t):	-10° + 80° C

Pressione Lavoro Working Press. P2	Contaminazione / Contamination		Filtro / Filter βx = 75
	NAS 1638	ISO 4406	
≤ 200 bar	12	21/18	40 μm
≥ 200 bar	11	20/17	25 μm

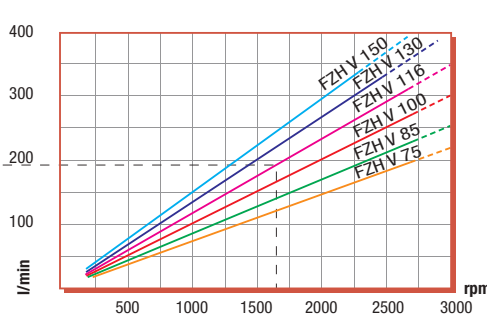
◀ **FILTRAZIONE CONSIGLIATA (ritorno o mandata)**
RECOMMENDED FILTERING (return or outlet)

TIPO / TYPE			FZH75V	FZH85V	FZH100V	FZH116V	FZH130V	FZH150V	
	Vg	cm ³ /n cm ³ /rev.	73	84	100	116	132	148	
Pressione massima continua Max continuous operating pressure	P1	bar	300	270	260	250	230	190	
Pressione massima intermittente Max intermitt. operat. press.	(max 30 s)		P2	320	310	290	280	270	230
Pressione massima di picco Max peak pressure	(≤ 0.1 s)		P3	450	375	375	340	315	270
Velocità massima intermittente Max intermittent speed	(P ≤ 20 bar)	n3	3800	3500	3500	3000	3000	3000	
Velocità massima continua Max continuous speed	(≤ P1)	n1	1800	1800	1500	1500	1500	1500	
Velocità minima intermittente Min intermittent speed	(≤ P2 x 0.5) (max 30 s)	n4	300	300	250	250	250	250	

POTENZA ASSORBITA / POWER INPUT

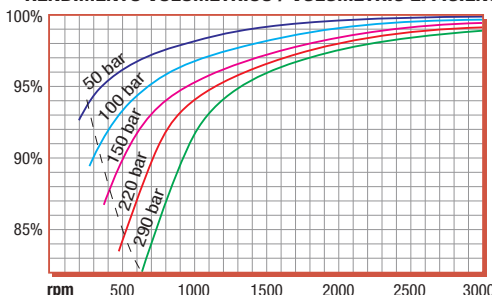


PORTATA / CAPACITY

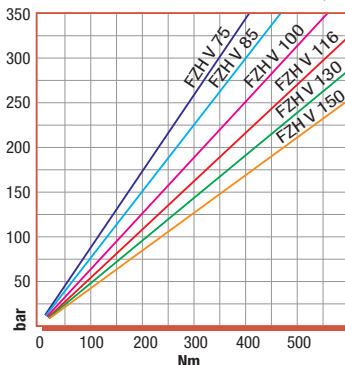


DIAGRAMMI / DIAGRAMS

RENDIMENTO VOLUMETRICO / VOLUMETRIC EFFICIENCY



COPPIA ASSORBITA / DRIVE TORQUE



RILIEVI ESEGUITI CON OLIO
ISO VG 46 A 50° C (√= 30 cSt)
THE ABOVE SPECIFICATIONS
REFER TO OIL TYPE ISO
VG 46 AT 50° C (√=30 cSt)



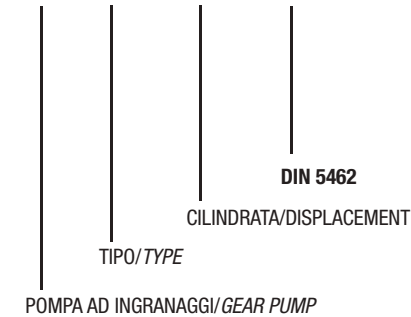
BIDIREZIONALE
BI-ROTATIONAL

BPS

Pompa ad Ingranaggi
Gear Pump

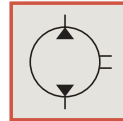
CODICE DI ORDINAZIONE / ORDERING CODE

200 BPS 011 0 0



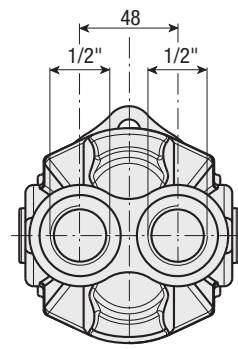
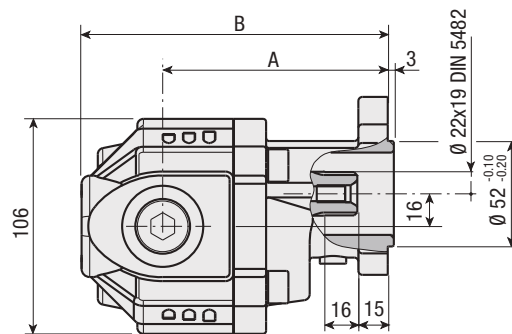
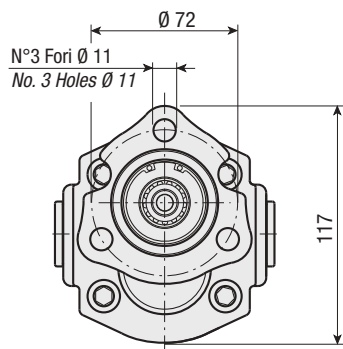
DIN
5 4 8 2

BPS 11
BPS 16
BPS 22
BPS 28
BPS 32



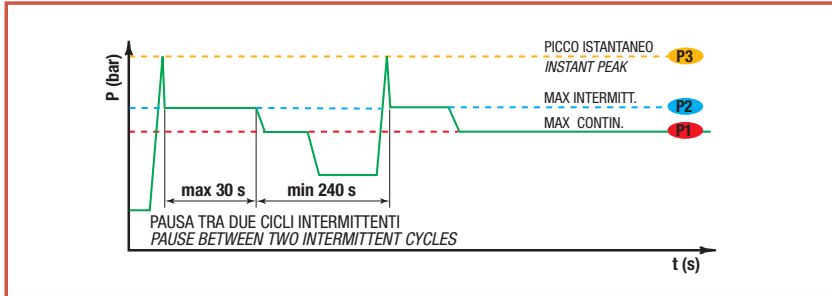
CARATTERISTICHE E DATI TECNICI / SPECIFICATIONS AND TECHNICAL DATA

TIPO TYPE	CODICE CODE	CILINDRATA DISPLACEMENT cm ³ /rev.	A mm	B mm	ASPIRAZIONE INLET	MANDATA OUTLET	PESO WEIGHT kg
BPS 11	200BPS01100	11.5	103.5	143.5	1/2" G	1/2" G	5.5
BPS 16	200BPS01600	16.4	111	151	1/2" G	1/2" G	5.85
BPS 22	200BPS02200	20.5	117.5	157.5	1/2" G	1/2" G	6.2
BPS 28	200BPS02800	28.6	111.3	170.3	3/4" G	3/4" G	6.6
BPS 32	200BPS03200	32.6	117.5	176.5	3/4" G	3/4" G	7



DATI TECNICI / TECHNICAL DATA

ESEMPIO CICLI LAVORO / EXAMPLE OF WORKING CYCLES



Pressione d'aspirazione: Inlet pressure:	0.7 ÷ 1.5 bar (assoluti/absolute)
Campo viscosità lavoro: Operating viscosity range:	12 ÷ 100 cSt
Temperatura fluido °C (t): Fluid temperature °C (t):	-10° + 80° C

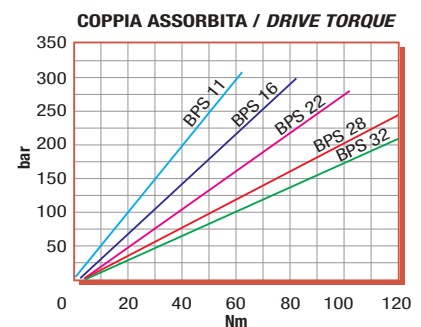
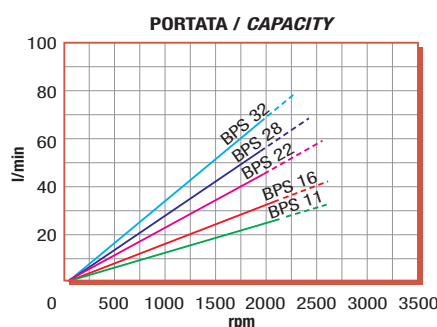
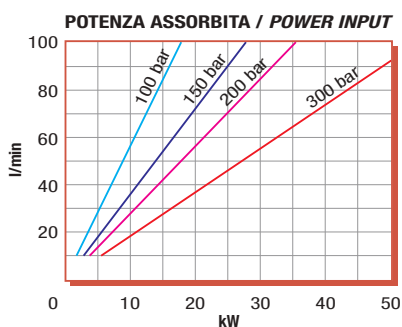
Pressione Lavoro Working Press. P2	Contaminazione / Contamination		Filtro / Filter βx = 75
	NAS 1638	ISO 4406	
≤ 200 bar	12	21/18	40 μm
≥ 200 bar	11	20/17	25 μm

**FILTRAZIONE CONSIGLIATA (ritorno o mandata)
RECOMMENDED FILTERING (return or outlet)**

TIPO / TYPE			BPS11	BPS16	BPS22	BPS28	BPS32
	Vg	cm ³ /n cm ³ /rev.	11.5	16.4	20.5	28.7	32.6
Cilindrata Displacement							
Pressione massima continua Max continuous operating pressure	P1	bar	280	280	260	220	190
Pressione massima intermittente Max intermitt. operat. press.	(max 30 s) P2		310	300	280	250	210
Pressione massima di picco Max peak pressure	(≤ 0.1 s) P3		320	310	290	260	220
Velocità massima intermittente Max intermittent speed	(P ≤ 20 bar) n3	n/min r.p.m.	2700	2700	2700	2700	2700
Velocità massima continua Max continuous speed	(≤ P1) n1		2200	2200	2000	2000	2000
Velocità minima intermittente Min intermittent speed	(≤ P2 x 0.5) (max 30 s) n4		450	450	450	450	450

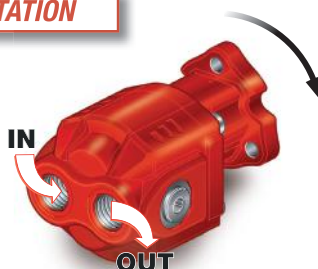
DIAGRAMMI / DIAGRAMS

RILIEVI ESEGUITI CON OLIO ISO VG 46 A 50° C (ν = 30 cSt)
THE ABOVE SPECIFICATIONS REFER TO OIL TYPE ISO VG 46 AT 50° C (ν = 30 cSt)

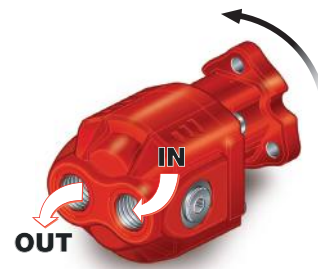


ROTAZIONE POMPA / PUMP ROTATION

**SINISTRA
ANTI-CLOCKWISE**



**DESTRA
CLOCKWISE**





BIDIREZIONALE
BI-ROTATIONAL



BPM

Pompa ad Ingranaggi
Gear Pump

CODICE DI ORDINAZIONE / ORDERING CODE

200 **BPM** 036 0 S

TIPO / TYPE

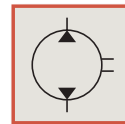
CILINDRATA / DISPLACEMENT

DIN 5462

POMPA AD INGRANAGGI / GEAR PUMP

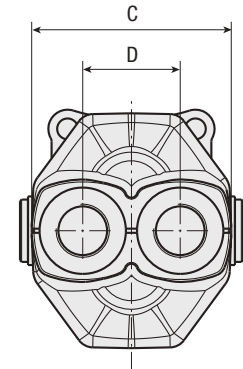
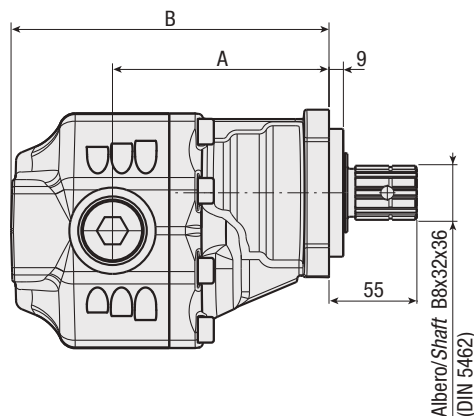
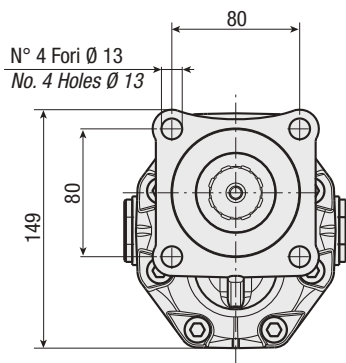
DIN
5 4 6 2
SE

BPM 36
BPM 43
BPM 56
BPM 65
BPM 80
BPM 100



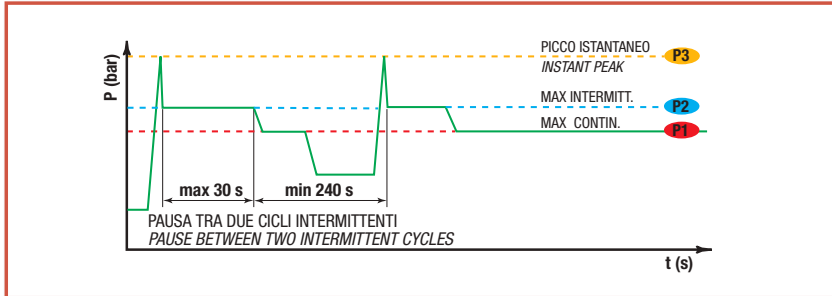
CARATTERISTICHE E DATI TECNICI / SPECIFICATIONS AND TECHNICAL DATA

TIPO TYPE	CODICE CODE	CILINDRATA DISPLACEMENT cm ³ /rev.	A mm	B mm	C mm	D mm	ASPIRAZIONE INLET	MANDATA OUTLET	PESO WEIGHT kg
BPM 36	200BPM0360S	36	129	185	125	61	3/4" G	3/4" G	13
BPM 43	200BPM0430S	43	131,5	191	125	61	3/4" G	3/4" G	13,4
BPM 56	200BPM0560S	56	135.5	198.5	125	61	1" G	1" G	14
BPM 65	200BPM0650S	65	141	204	125	61	1" G	1" G	14,8
BPM 80	200BPM0800S	84	141	216	140	70	1" 1/4 G	1" 1/4 G	15,6
BPM 100	200BPM10000	100	147	222	140	70	1" 1/4 G	1" 1/4 G	16,2



DATI TECNICI / TECHNICAL DATA

ESEMPIO CICLI LAVORO / EXAMPLE OF WORKING CYCLES



Pressione d'aspirazione: <i>Inlet pressure:</i>	0.7 ÷ 1.5 bar (assoluti/absolute)
Campo viscosità lavoro: <i>Operating viscosity range:</i>	12 ÷ 100 cSt
Temperatura fluido °C (t): <i>Fluid temperature °C (t):</i>	-10° + 80° C

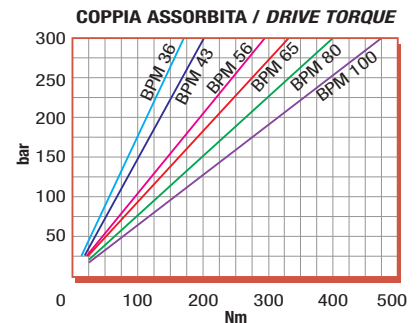
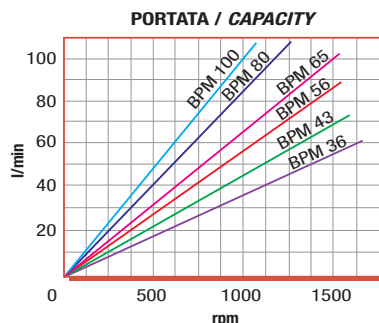
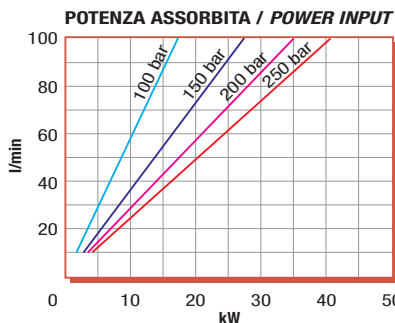
Pressione Lavoro <i>Working Press.</i>	P2	Contaminazione / <i>Contamination</i>		Filtro / <i>Filter</i> βx = 75
		NAS 1638	ISO 4406	
≤ 200 bar		12	21/18	40 μm
≥ 200 bar		11	20/17	25 μm

FILTRAZIONE CONSIGLIATA (ritorno o mandata)
RECOMMENDED FILTERING (return or outlet)

TIPO / <i>TYPE</i>			BPM36	BPM43	BPM56	BPM65	BPM80	BPM100	
	Cilindrata <i>Displacement</i>	Vg	cm ³ /n cm ³ /rev.	36	43	56	65	84	100
Pressione massima continua <i>Max continuous operating pressure</i>	P1	bar	230	230	220	200	180	160	
Pressione massima intermittente <i>Max intermitt. operat. press.</i>	(max 30 s)		P2	240	240	230	210	200	180
Pressione massima di picco <i>Max peak pressure</i>	(≤ 0.1 s)		P3	250	250	240	220	210	190
Velocità massima intermittente <i>Max intermittent speed</i>	(P ≤ 20 bar)	n3	2100	2100	1800	1800	1700	1700	
Velocità massima continua <i>Max continuous speed</i>	(≤ P1)	n1	1700	1700	1500	1500	1400	1400	
Velocità minima intermittente <i>Min intermittent speed</i>	(≤ P2 x 0.5) (max 30 s)	n4	400	400	300	300	300	300	

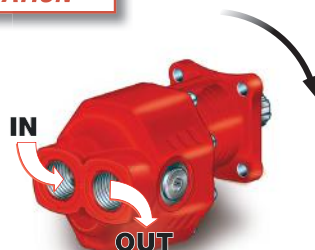
DIAGRAMMI / DIAGRAMS

RILIEVI ESEGUITI CON OLIO ISO VG 46 A 50° C (√= 30 cSt)
THE ABOVE SPECIFICATIONS REFER TO OIL TYPE ISO VG 46 AT 50° C (√=30 cSt)

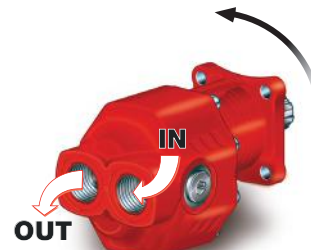


ROTAZIONE POMPA / PUMP ROTATION

**SINISTRA
ANTI-CLOCKWISE**



**DESTRA
CLOCKWISE**





BIDIREZIONALE
BI-ROTATIONAL

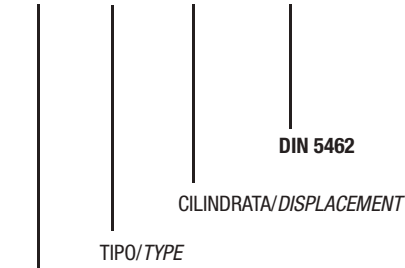


BPH

Pompa ad Ingranaggi
Gear Pump

CODICE DI ORDINAZIONE / ORDERING CODE

200 BPH 090 0 S



POMPA AD INGRANAGGI/GEAR PUMP

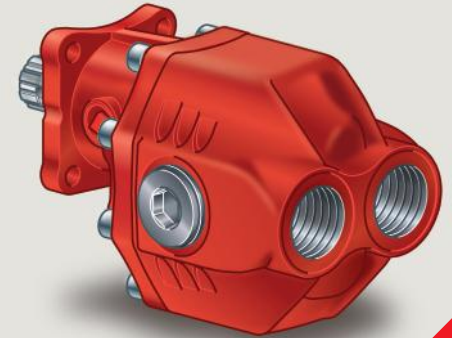
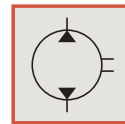
DIN
5 4 6 2
SE

BPH 90

BPH 105

BPH 112

BPH 125



New

CARATTERISTICHE E DATI TECNICI / SPECIFICATIONS AND TECHNICAL DATA

TIPO TYPE	CODICE CODE	CILINDRATA DISPLACEMENT cm ³ /rev.	A mm	B mm	ASPIRAZIONE/MANDATA INLET/OUTLET	PESO WEIGHT kg
BPH 90	200BPH0900S	88.8	134	226	1" 1/4 G	20.8
BPH 105	200BPH1050S	98.5	138	230	1" 1/4 G	21.5
BPH 112	200BPH1120S	108.3	136	234	1" 1/4 G	22
BPH 125	200BPH1250S	119.2	141	239	1" 1/4 G	22.9

