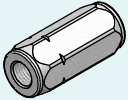
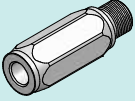
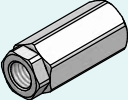
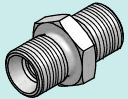
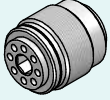
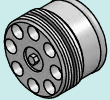
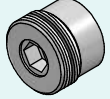
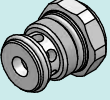
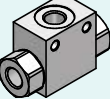
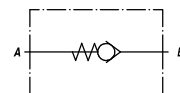
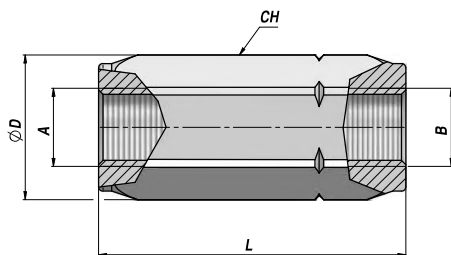


VALVOLE UNIDIREZIONALI CHECK VALVES

		Descrizione - Description	Type	Page
		VALVOLA UNIDIREZIONALE (TENUTA A CONO) CHECK VALVE (POPPET TYPE)	VUR/C	276
	NEW!	VALVOLA UNIDIREZIONALE (TENUTA A CONO) CHECK VALVE (POPPET TYPE)	VUR/CMF	276
	NEW!	VALVOLA BIDIREZIONALE (TENUTE A CONO) BIDIRECTIONAL CHECK VALVE (POPPET TYPE)	VRC	277
	NEW!	VALVOLA UNIDIREZIONALE (TENUTA A CONO) CHECK VALVE (POPPET TYPE)	VU MM	277
		VALVOLA UNIDIREZIONALE (TENUTA A SFERA) CHECK VALVE (BALL TYPE)	VUI	278
	NEW!	VALVOLA UNIDIREZIONALE (TENUTA A CONO) CHECK VALVE (POPPET TYPE)	VRR	278
	NEW!	VALVOLA UNIDIREZIONALE (TENUTA A CONO) CHECK VALVE (POPPET TYPE)	VRR1	279
	NEW!	VALVOLA UNIDIREZIONALE CHECK VALVE	VUC	279
		VALVOLA DI COMMUTAZIONE SHUTTLE VALVE	VU/SF	280

VUR/C

VALVOLA UNIDIREZIONALE (TENUTA A CONO)
CHECK VALVE (POPPET TYPE)



Codice Code	A - B BSP	Q MAX l/min	P MAX bar	Tipo Type	L	ØD	CH	kg
VSG303.C10000	1/4"	30	400	VUR 010-C	58	21	19	0,10
VSG303.C20000	3/8"	50	400	VUR 020-C	62	27	24	0,18
VSG303.C30000	1/2"	90	350	VUR 030-C	71	33	30	0,31
VSG303.C40000	3/4"	130	300	VUR 040-C	83	40	36	0,56
VSG303.C50000	1"	180	270	VUR 050-C	106	59	45	0,91
VSG303.C60000	1"1/4	250	250	VUR 060-C	127	63	55	1,48
VSG303.C70000	1"1/2	380	200	VUR 070-C	138	74	65	2,37

Pressione di apertura - Opening pressure : bar 0.5 (Standard) - 4 - 8

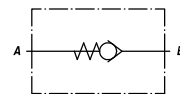
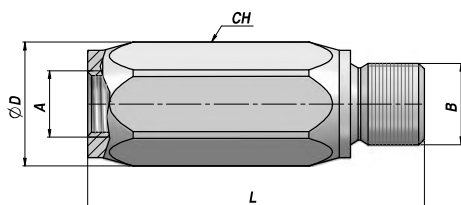
MATERIALE CORPO : ACCIAIO
BODY MATERIAL : STEEL

MONTAGGIO IN LINEA
LINE MOUNTING

VUR/CMF

NEW!

VALVOLA UNIDIREZIONALE (TENUTA A CONO)
CHECK VALVE (POPPET TYPE)



Codice Code	A - B BSP	Q MAX l/min	P MAX bar	Tipo Type	L	ØD	CH	kg
VSG305.C10000	1/4"	30	400	VUR 010-CMF	58	21	19	0,10
VSG305.C20000	3/8"	50	400	VUR 020-CMF	62	27	24	0,18
VSG305.C30000	1/2"	90	350	VUR 030-CMF	71	33	30	0,31
VSG305.C40000	3/4"	130	300	VUR 040-CMF	76	40	36	0,56
VSG305.C50000	1"	180	270	VUR 050-CMF	106	59	45	0,91
VSG305.C60000	1"1/4	250	250	VUR 060-CMF	127	63	55	1,48

Pressione di apertura - Opening pressure : bar 0.5 (Standard) - 4 - 8

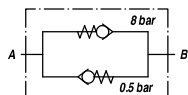
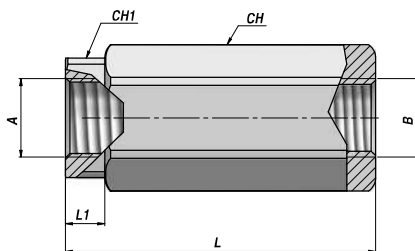
MATERIALE CORPO : ACCIAIO
BODY MATERIAL : STEEL

MONTAGGIO IN LINEA
LINE MOUNTING

VALVOLA BIDIREZIONALE (TENUTE A CONO)
BIDIRECTIONAL CHECK VALVE (POPPET TYPE)

NEW!

VRC



Codice Code	A - B BSP	Q MAX l/min	P MAX bar	Tipo Type	L	L1	CH	CH1	kg
V1590.0606	3/8"	35	350	VRC 3/8"	100	11	30	27	0,45
V1590.0616	1/2"	55	350	VRC 1/2"	118	26	30	27	0,45

Pressione di apertura - Opening pressure : A > B = 0.5 bar

Pressione di apertura - Opening pressure : B > A = 8 bar

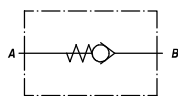
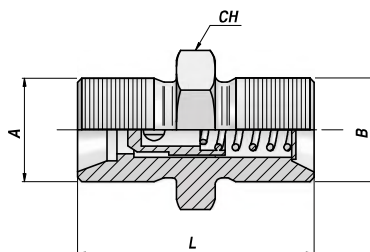
MATERIALE CORPO : ACCIAIO
BODY MATERIAL : STEEL

MONTAGGIO IN LINEA
LINE MOUNTING

VALVOLA UNIDIREZIONALE (TENUTA A CONO)
CHECK VALVE (POPPET TYPE)

NEW!

VU MM



Codice Code	A - B BSP	Q MAX l/min	P MAX bar	Tipo Type	L	CH	kg x 100
V1590.05941	1/4"	8	350	VU MM 1/4"-1	32	19	3,30
V1590.06041	3/8"	20	350	VU MM 3/8"-1	34	22	5,30
V1590.06141	1/2"	50	350	VU MM 1/2"-1	39	27	9,20
V1590.06241	3/4"	90	350	VU MM 3/4"-1	45	32	14,20
V1590.06341	1"	90	320	VU MM 1"-1	55	40	28,80
V1590.06371	1"1/4	250	320	VU MM 1"1/4-1	70	50	59,40
V1590.06381	1"1/2	300	320	VU MM 1"1/2-1	86	55	91,00
V1590.06391	2"	650	320	VU MM 2"-1	102	70	180,00

Pressione di apertura - Opening pressure : VU MM 1/4" > 1" = bar 1 (Standard) - 3 - 6

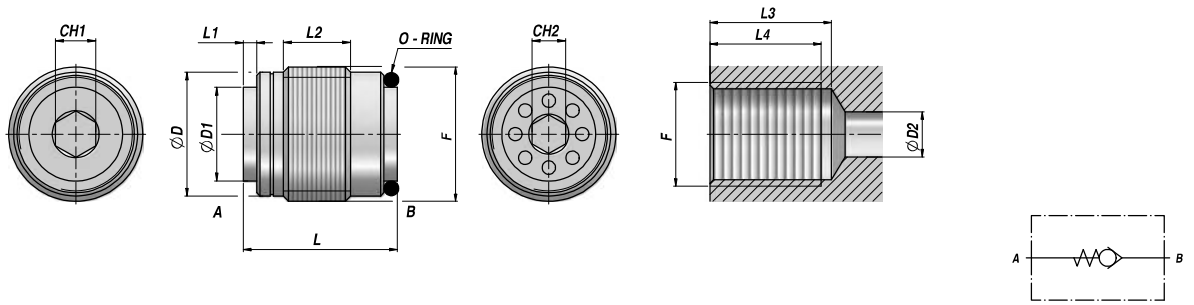
Pressione di apertura - Opening pressure : VU MM 1"1/4 > 2" = bar 1 (Standard) - 6 - 9

MATERIALE CORPO : ACCIAIO
BODY MATERIAL : STEEL

MONTAGGIO IN LINEA
LINE MOUNTING

VUI

VALVOLA UNIDIREZIONALE (TENUTA A SFERA)
CHECK VALVE (BALL TYPE)



Codice Code	F BSP	Q MAX l/min	P MAX bar	Tipo Type	L	L1	L2	ØD	ØD1	CH1	CH2	L3	L4	ØD2	kg x 100
VCG301.100000	1/4"	18	350	VUI 010	17.0	1.0	6.0	11.3	9.2	3	3	28	25	8	1,00
VCG301.200000	3/8"	25	350	VUI 020	18.5	1.8	7.5	14.8	11.0	4	3	30	27	9	2,00
VCG301.300000	1/2"	50	350	VUI 030	23.0	1.8	9.5	18.5	14.0	6	5	36	32	12	4,00
VCG301.400000	3/4"	78	350	VUI 040	28.5	2.7	14.5	24.0	19.0	8	8	42	37	17	7,00

Pressione di apertura - Opening pressure : bar 0.5

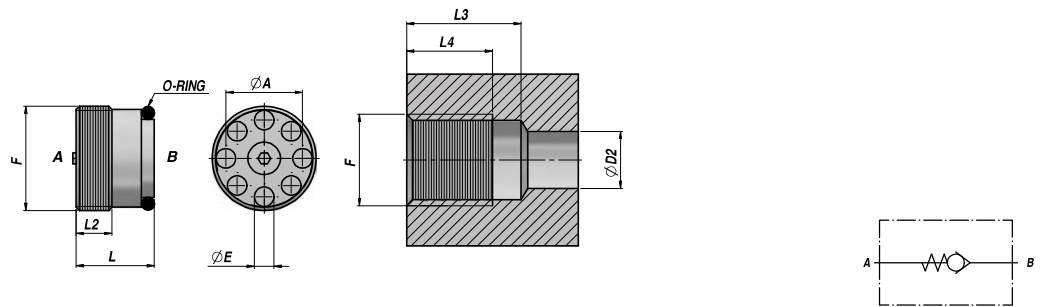
MATERIALE CORPO : ACCIAIO
BODY MATERIAL : STEEL

CARTUCCIA
CARTRIDGE

VRR

NEW!

VALVOLA UNIDIREZIONALE (TENUTA A CONO)
CHECK VALVE (POPPET TYPE)



Codice Code	F BSP	Q MAX l/min	P MAX bar	Tipo Type	L	L2	ØA	ØE	L3	L4	ØD2	O-ring	kg x 100
VCG302.010000	1/4"	20	350	VRR 010	8.8	4.2	8.8	2.2	23.5	21.0	7	8x1	1,00
VCG302.020000	3/8"	50	350	VRR 020	12.0	7.0	10.8	3.0	26.5	24.0	9	11x1.5	2,00
VCG302.030000	1/2"	80	350	VRR 030	14.8	8.0	13.8	3.5	31.0	27.5	12	14x1.78	3,00

Pressione di apertura - Opening pressure : bar 0.5

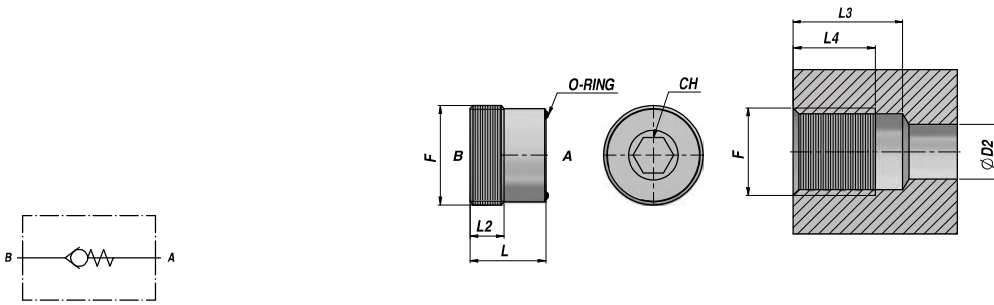
MATERIALE CORPO : ACCIAIO
BODY MATERIAL : STEEL

CARTUCCIA
CARTRIDGE

VALVOLA UNIDIREZIONALE (TENUTA A CONO)
CHECK VALVE (POPPET TYPE)

NEW!

VRR1



Codice Code	F BSP	Q MAX l/min	P MAX bar	Tipo Type	L	L2	L3	L4	ØD2	CH	O-ring	kg x 100
VCG303.010000	1/4"	20	350	VRR1 010	10.0	6	24.0	21.5	7	5	9x1	1,00
VCG303.020000	3/8"	50	350	VRR1 020	11.5	7	25.5	23.0	9	6	10x1.5	2,00
VCG303.030000	1/2"	80	350	VRR1 030	13.5	8	30.5	28.0	12	8	14.1x1.6	3,00

Pressione di apertura - Opening pressure : bar 0.5

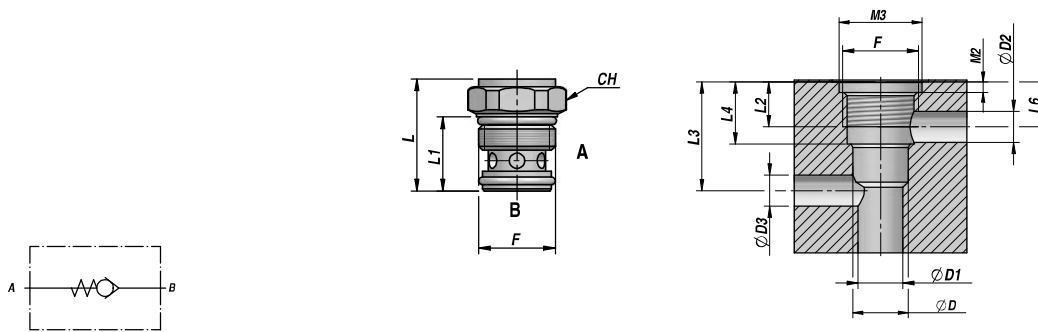
MATERIALE CORPO : ACCIAIO
BODY MATERIAL : STEEL

CARTUCCIA
CARTRIDGE

VALVOLA UNIDIREZIONALE
CHECK VALVE

NEW!

VUC



Codice Code	F	Q MAX l/min	P MAX bar	Tipo Type	L	L1	ØD (H7)	L2	L3	L4	L5	L6	ØD1 max	ØD2 max	ØD3	M2	M3	CH	kg x 100
VCS302.200400	3/4-16 UNF	20	350	VUC 020	39.5	27.5	12.7	15	32	20.6	31	13	11	9	9.0	2.7	20.5	22	5,30
VCM302.400050	M22x1.5	40	300	VUC 040	34.5	28.0	19.0	13	33	21.0	32	15	18	9	9.5	3.3	23.0	27	7,50

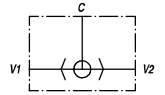
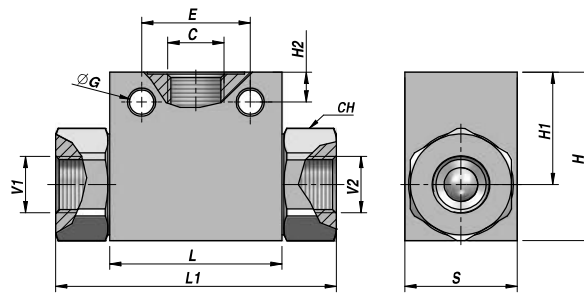
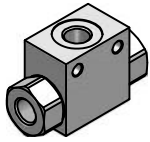
VUC 020 : TENUTA A SFERA - BALL TYPE

VUC 040: TENUTA A CONO - POPPET TYPE

Pressione di apertura - Opening pressure : VUC 020: 4 bar - VUC 040: 0.5 bar

MATERIALE CORPO : ACCIAIO
BODY MATERIAL : STEEL

CARTUCCIA
CARTRIDGE

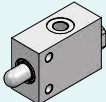
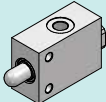
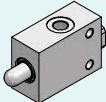
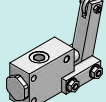
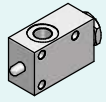
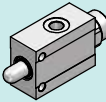
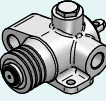
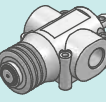
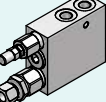
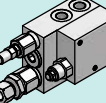
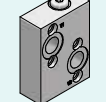
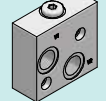
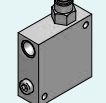


Codice Code	C BSP	V1 - V2 BSP	Q MAX l/min	P MAX bar	Tipo Type	L	L1	ØG	E	H2	CH	H1	H	S	kg
VSG390.100000	1/4"	1/4"	35	500	VU/SF 010	36	69	5.5	25	7.5	22	22.5	35	25	0,27
VSG390.200000	3/8"	3/8"	50	500	VU/SF 020	45	75	6.5	29	8.0	27	30.0	45	30	0,46
VSG390.300000	1/2"	1/2"	90	500	VU/SF 030	57	94	5.5	36	9.0	30	32.0	50	35	0,74
VSG390.400000	3/4"	3/4"	140	350	VU/SF 040	65	100	6.5	50	6.5	41	37.5	60	50	1,41
VSG390.500000	1"	1"	180	300	VU/SF 050	80	126	10.5	60	11.0	46	54.5	80	50	1,87

MATERIALE CORPO : ACCIAIO
BODY MATERIAL : STEEL

MONTAGGIO IN LINEA
LINE MOUNTING

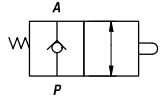
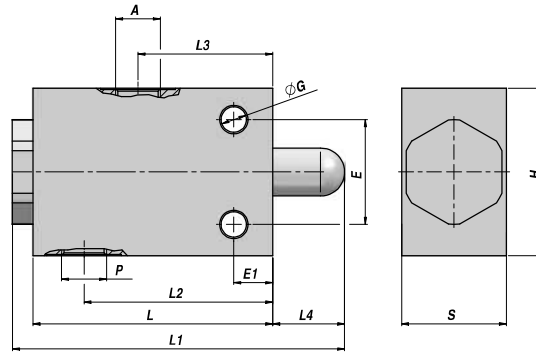
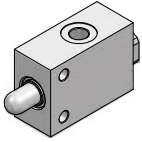
VALVOLE VARIE FURTHER VALVES

		Descrizione - Description	Type	Page
	NEW!	VALVOLA DI FINE CORSA - NORMALMENTE CHIUSO <i>END-STROKE VALVE - NORMALLY CLOSED</i>	FCS-C	282
	NEW!	VALVOLA DI FINE CORSA - NORMALMENTE CHIUSO <i>END-STROKE VALVE - NORMALLY CLOSED</i>	FC-C	282
	NEW!	VALVOLA DI FINE CORSA - NORMALMENTE APERTO <i>END-STROKE VALVE - NORMALLY OPEN</i>	FC-A	283
	NEW!	VALVOLA DI FINE CORSA CON CAMMA - NORMALMENTE CHIUSO <i>MECHANICAL DRIVE END-STROKE VALVE - NORMALLY CLOSED</i>	V-FCC...NC	283
		VALVOLA DI FINE CORSA - NORMALMENTE CHIUSO <i>END-STROKE VALVE - NORMALLY CLOSED</i>	FCV...NC	284
		VALVOLA DI FINE CORSA - NORMALMENTE APERTO <i>END-STROKE VALVE - NORMALLY OPEN</i>	FCV...NA	284
		VALVOLA DI FINE CORSA - NORMALMENTE APERTO <i>END-STROKE VALVE - NORMALLY OPEN</i>	FCR-1T NA	285
		VALVOLA DI FINE CORSA - NORMALMENTE CHIUSO <i>END-STROKE VALVE - NORMALLY CLOSED</i>	FCR-2T NC	285
		VALVOLA DI RIBALTAMENTO ARATRO <i>PLOUGH OVERTURNING VALVE</i>	VRAP DE	286
	NEW!	VALVOLA DI RIBALTAMENTO ARATRO <i>PLOUGH OVERTURNING VALVE</i>	VRAP DE + VMP	286
	NEW!	VALVOLA SBLOCCAFRENO PER MOTORI "MP-MR" <i>BRAKE UNCLAMPING VALVE FOR "MP-RR" MOTORS</i>	VSBF-MP/R	287
	NEW!	VALVOLA SBLOCCAFRENO PER MOTORI "MS" <i>BRAKE UNCLAMPING VALVE FOR "MS" MOTORS</i>	VSBF-MS	287
	NEW!	VALVOLA RIGENERATRICE DI CIRCUITO <i>REGENERATIVE VALVE</i>	VRSP	288

FCS-C

NEW!

VALVOLA DI FINE CORSA - NORMALMENTE CHIUSO
END-STROKE VALVE - NORMALLY CLOSED



Codice Code	A - P BSP	Q MAX l/min	P MAX bar	Tipo Type	L	L1	L2	L3	L4	ØG	E	E1	H	S	kg
VSG104.020000	3/8"	30	300	FCS-C 020	65	83	43	30	10	8.5	35	13.5	60	30	0,79
VSG104.030000	1/2"	60	300	FCS-C 030	80	103	51	37	13	10.5	40	13.5	75	35	1,28

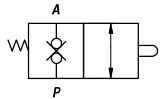
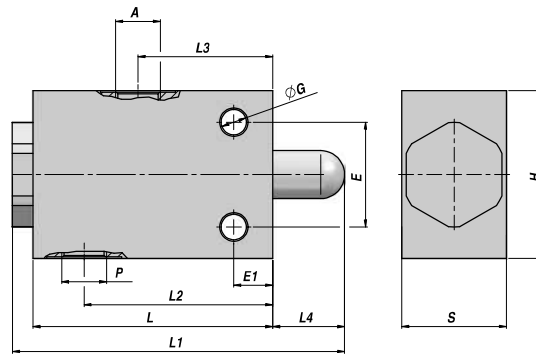
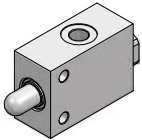
MATERIALE CORPO : ACCIAIO
BODY MATERIAL : STEEL

MONTAGGIO IN LINEA
LINE MOUNTING

FC-C

NEW!

VALVOLA DI FINE CORSA - DOPPIO RITEGNO - NORMALMENTE CHIUSO
END-STROKE VALVE - DOUBLE LOCK - NORMALLY CLOSED



Codice Code	A - P BSP	Q MAX l/min	P MAX bar	Tipo Type	L	L1	L2	L3	L4	ØG	E	E1	H	S	kg
VSG105.020000	3/8"	30	300	FC-C 020	65	83	43	30	10	8.5	35	13.5	60	30	0,79
VSG105.030000	1/2"	60	300	FC-C 030	80	103	51	37	13	10.5	40	13.5	75	35	1,30

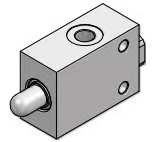
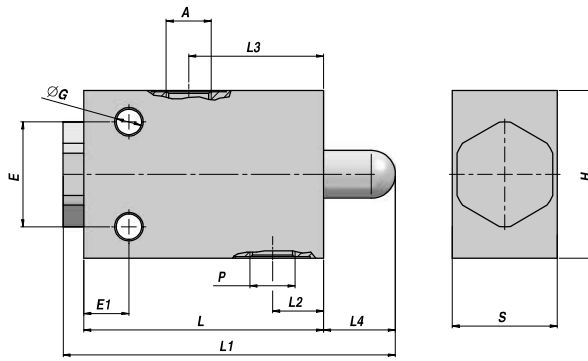
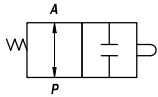
MATERIALE CORPO : ACCIAIO
BODY MATERIAL : STEEL

MONTAGGIO IN LINEA
LINE MOUNTING

VALVOLA DI FINE CORSA - NORMALMENTE APERTO
END-STROKE VALVE - NORMALLY OPEN

NEW!

FC-A



Codice Code	A - P BSP	Q MAX l/min	P MAX bar	Tipo Type	L	L1	L2	L3	L4	ØG	E	E1	H	S	kg
VSG106.020000	3/8"	30	300	FC-A 020	65	81.5	17	28	12	8.5	40	15	60	30	0,80
VSG106.030000	1/2"	60	300	FC-A 030	65	81.5	17	28	12	8.5	40	15	60	30	0,80

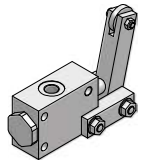
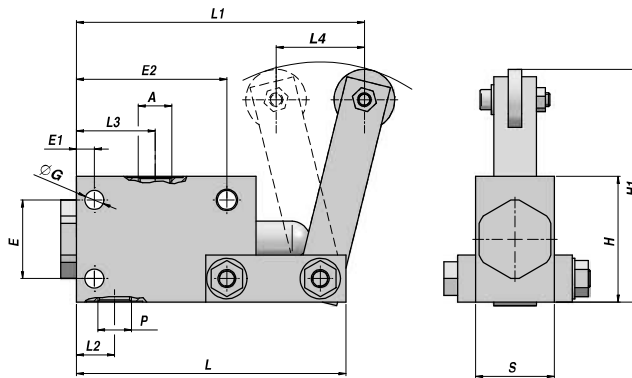
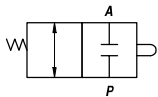
MATERIALE CORPO : ACCIAIO
 BODY MATERIAL : STEEL

MONTAGGIO IN LINEA
 LINE MOUNTING

VALVOLA DI FINE CORSA CON CAMMA - NORMALMENTE CHIUSO
MECHANICAL DRIVE END-STROKE VALVE - NORMALLY CLOSED

NEW!

V-FCC..NC



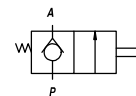
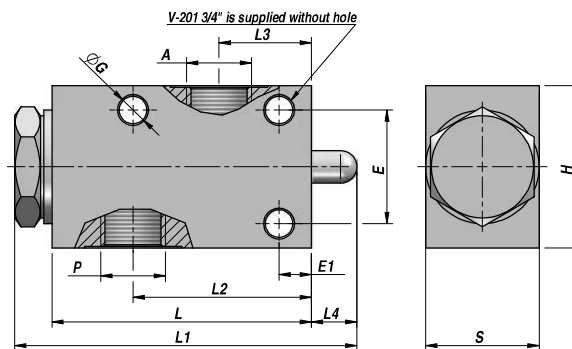
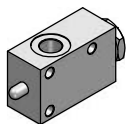
Codice Code	A - P BSP	Q MAX l/min	P MAX bar	Tipo Type	L	L1	L2	L3	L4	ØG	E	E1	E2	H1	H	S	kg
V7090.0815	1/2"	70	350	V-FCC 1/2"-NC	107	124.5	24.5	45	48	7	35	7	55	112.5	50	35	1,28

MATERIALE CORPO : ACCIAIO
 BODY MATERIAL : STEEL

MONTAGGIO IN LINEA
 LINE MOUNTING

FCV ... NC

VALVOLA DI FINE CORSA - NORMALMENTE CHIUSO
END-STROKE VALVE - NORMALLY CLOSED



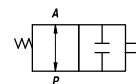
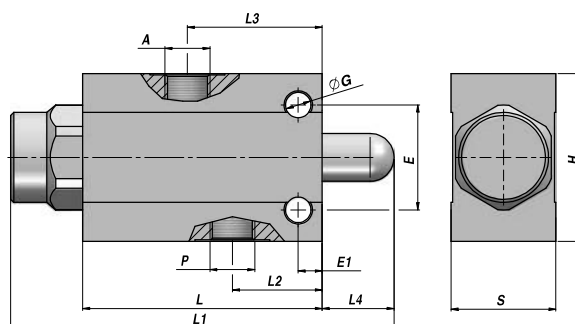
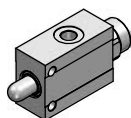
Codice Code	A - P BSP	Q MAX l/min	P MAX bar	Tipo Type	L	L1	L2	L3	L4	ØG	E	E1	H	S	kg
V7015.0600	3/8"	50	350	FC V-101 NC	80	105	55	30.0	14	8.5	35	10	50	35	0,96
V7015.0800	1/2"	70	350	FC V-121 NC	80	105	55	28.5	14	8.5	35	10	50	35	0,93
V7015.1200	3/4"	100	350	FC V-201 NC	88	115	61	23.0	14	8.5	50	20	70	45	0,86

MATERIALE CORPO : ACCIAIO
BODY MATERIAL : STEEL

MONTAGGIO IN LINEA
LINE MOUNTING

FCV ... NA

VALVOLA DI FINE CORSA - NORMALMENTE APERTO
END-STROKE VALVE - NORMALLY OPEN



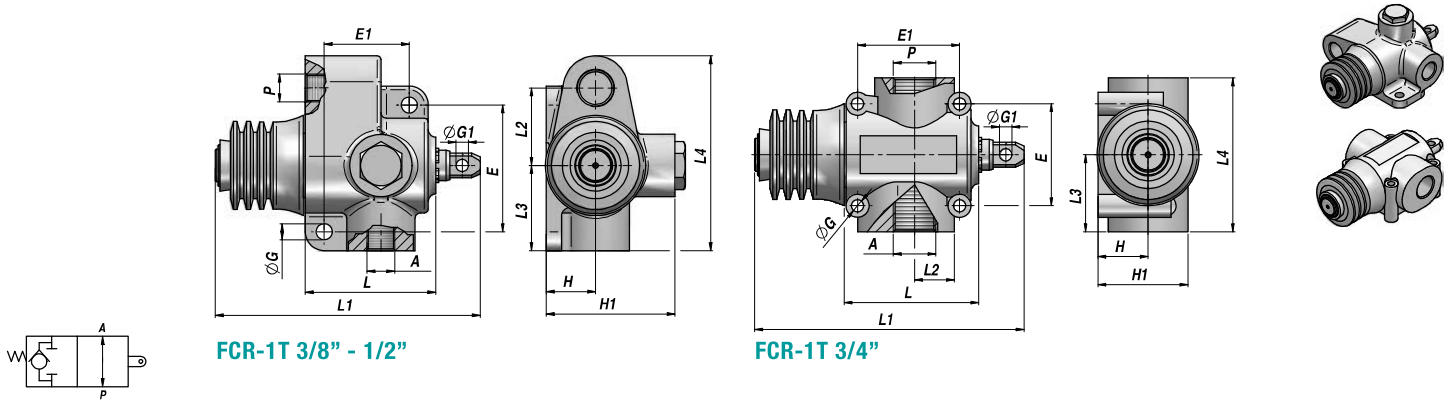
Codice Code	A - P BSP	Q MAX l/min	P MAX bar	Tipo Type	L	L1	L2	L3	L4	ØG	E	E1	H	S	kg
V7090.0817	3/8"	40	350	FC V-101 NA	80	129	30	45	24	8.5	35	8	56	35	1,24
V7090.0818	1/2"	60	350	FC V-121 NA	80	129	30	45	24	8.5	35	8	62	35	1,38

MATERIALE CORPO : ACCIAIO
BODY MATERIAL : STEEL

MONTAGGIO IN LINEA
LINE MOUNTING

VALVOLA DI FINE CORSA - NORMALMENTE APERTO
END-STROKE VALVE - NORMALLY OPEN

FCR-1T NA



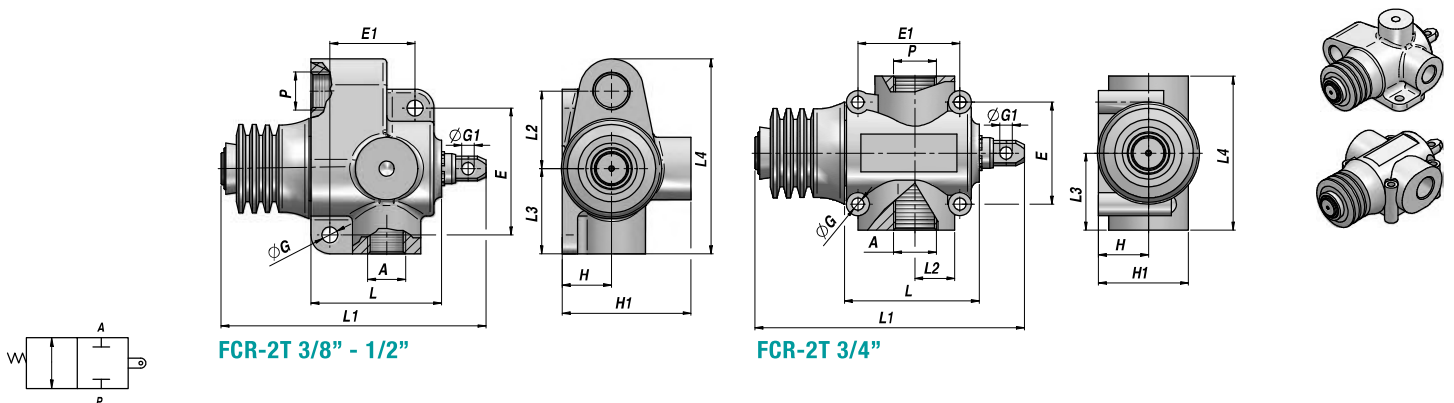
Codice Code	A - P BSP	Q MAX l/min	P MAX bar	Tipo Type	L	L1	L2	L3	L4	ØG	ØG1	E	E1	H	H1	kg
V7090.0824	3/8"	60	350	FCR-1T 60-NA 38	69	130	41.0	45	103	8.5	6.5	66	45	26.0	68	1,63
V7090.0826	1/2"	80	350	FCR-1T 80-NA 12	69	130	41.0	45	103	8.5	6.5	66	45	26.0	68	1,62
V7090.1200	3/4"	120	350	FCR-1T120-NA 34	88	173	23.5	46	92	8.5	13.0	50	56	27.5	50	2,11

MATERIALE CORPO : GHISA
 BODY MATERIAL : CAST IRON

MONTAGGIO IN LINEA
 LINE MOUNTING

VALVOLA DI FINE CORSA - NORMALMENTE CHIUSO
END-STROKE VALVE - NORMALLY CLOSED

FCR-2T NC



Codice Code	A - P BSP	Q MAX l/min	P MAX bar	Tipo Type	L	L1	L2	L3	L4	ØG	ØG1	E	E1	H	H1	kg
V7090.0820	3/8"	60	350	FCR-2T 60-NC 38	69	130	41.0	45	103	8.5	6.5	66	45	26.0	68	1,65
V7090.0822	1/2"	80	350	FCR-2T 80-NC 12	69	130	41.0	45	103	8.5	6.5	66	45	26.0	68	1,65
V7090.0823	3/4"	120	350	FCR-2T120-NC 34	88	179	23.5	46	92	8.5	13.0	50	56	27.5	50	2,20

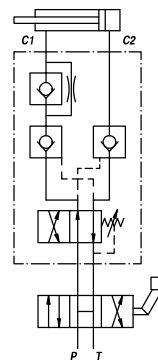
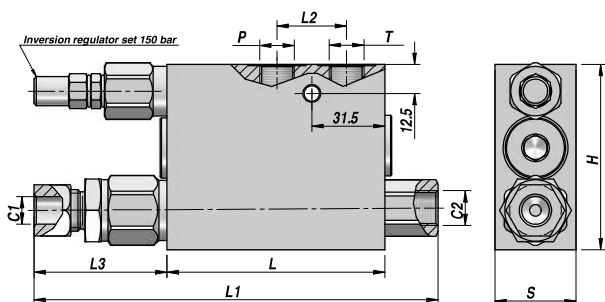
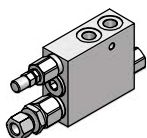
MATERIALE CORPO : GHISA
 BODY MATERIAL : CAST IRON

MONTAGGIO IN LINEA
 LINE MOUNTING

VRAP DE

**DOPPIO EFFETTO
DOUBLE ACTING**

**VALVOLA DI RIBALTAMENTO ARATRO
PLOUGH OVERTURNING VALVE**



Codice Code	P - T BSP	C2 BSP	C1	Inversion Pressure MAX bar	P MAX bar	Tipo Type	L	L1	L2	L3	H	S	kg
V1867.0282	3/8"	3/8"	Ø12	250	400	VRAP 40/ 50 DE	94	176	30	58	80	35	2,13
V1867.0600	3/8"	3/8"	Ø12	250	400	VRAP 60/ 80 DE	94	176	30	58	80	35	2,14
V1867.0601	3/8"	3/8"	Ø12	250	400	VRAP 80/100 DE	94	176	30	58	80	35	2,14
V1867.0302	3/8"	3/8"	Ø12	250	400	VRAP 100/110 DE	94	176	30	58	80	35	2,14
V1867.0320	3/8"	3/8"	Ø12	250	400	VRAP 110/130 DE	94	176	30	58	80	35	2,13

MATERIALE CORPO : ACCIAIO
BODY MATERIAL : STEEL

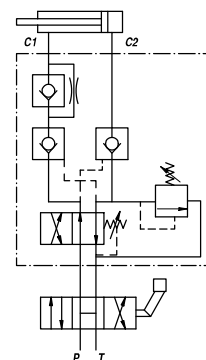
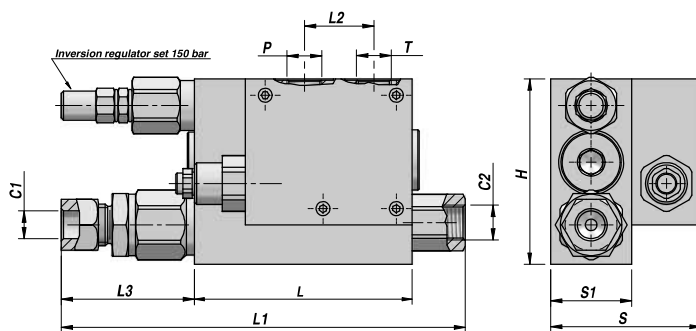
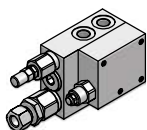
MONTAGGIO SU CILINDRO
CYLINDER MOUNTING

VRAP DE-VMP

NEW!

**DOPPIO EFFETTO
DOUBLE ACTING**

**VALVOLA DI RIBALTAMENTO ARATRO
PLOUGH OVERTURNING VALVE**



Codice Code	P - T BSP	C2 BSP	C1	Inversion Pressure MAX bar	P MAX bar	Tipo Type	L	L1	L2	L3	H	S	kg
V1867.0350	3/8"	3/8"	Ø12	250	400	VRAP 60/ 80 DE+VMP	94	176	30	58	80	65	3,20
V1867.0360	3/8"	3/8"	Ø12	250	400	VRAP 80/100 DE+VMP	94	176	30	58	80	65	3,19
V1867.0376	3/8"	3/8"	Ø12	250	400	VRAP 100/110 DE+VMP	94	176	30	58	80	65	3,19
V1867.0380	3/8"	3/8"	Ø12	250	400	VRAP 110/130 DE+VMP	94	176	30	58	80	65	3,16

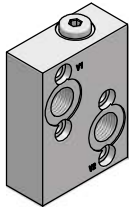
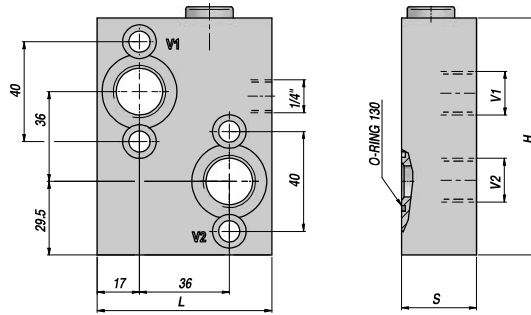
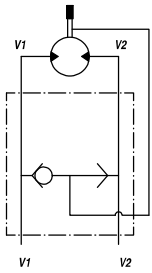
MATERIALE CORPO : ACCIAIO
BODY MATERIAL : STEEL

MONTAGGIO SU CILINDRO
CYLINDER MOUNTING

VALVOLA SBLOCCAFRENO PER MOTORI "MPP-MPR-MCP-MCR"
BRAKE UNCLAMPING VALVE FOR "MPP-MPR-MCP-MCR" MOTORS

NEW!

VSBF (MP-MR)



Codice Code	V1 - V2 BSP	Q MAX l/min	P MAX bar	Tipo Type	L	H	S	kg
V6090.0333	1/2"	60	300	VSBF 1/2" MP/R	70	95	30	1,31

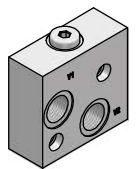
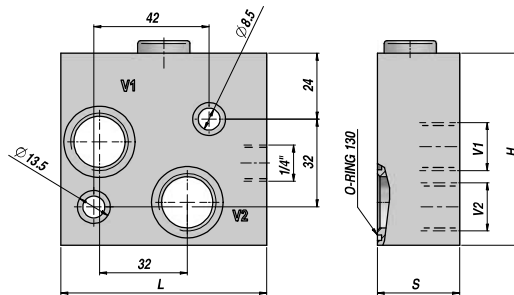
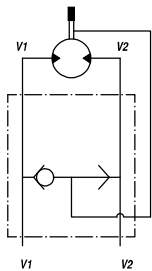
MATERIALE CORPO : ACCIAIO
 BODY MATERIAL : STEEL

FLANGIABILE
 FACE MOUNTING

VALVOLA SBLOCCAFRENO PER MOTORI "MPS-MCS"
BRAKE UNCLAMPING VALVE FOR "MPS-MCS" MOTORS

NEW!

VSBF (MS)

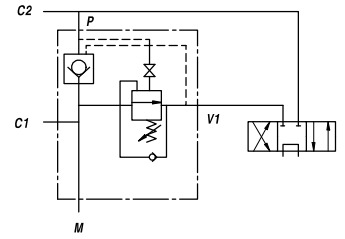
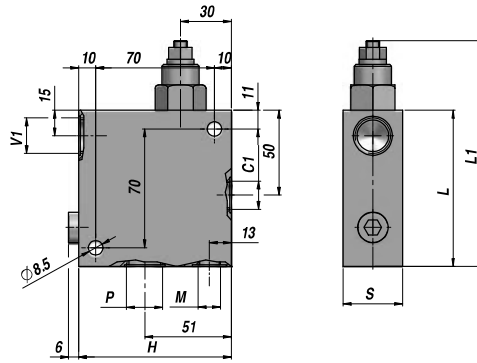
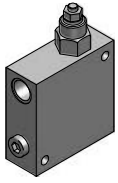


Codice Code	V1 - V2 BSP	Q MAX l/min	P MAX bar	Tipo Type	L	H	S	kg
V6090.0334	1/2"	40	300	VSBF 1/2" MS	75	70	30	1,31

MATERIALE CORPO : ACCIAIO
 BODY MATERIAL : STEEL

FLANGIABILE
 FACE MOUNTING

VRSP



Codice Code	V1-P-C1 BSP	M BSP	Q MAX l/m	P MAX bar	Tipo Type	L	L1 max	H	S	kg
V4790.1220	1/2"	1/4"	60	350	VRSP 1/2"	92	142	90	35	2,03
V4790.1230	3/4"	1/4"	95	350	VRSP 3/4"	120	177	105	40	3,50

MOLLA - SPRING :B= 60:350 bar (Standard)

MATERIALE CORPO : ACCIAIO
BODY MATERIAL : STEEL

MONTAGGIO IN LINEA
LINE MOUNTING