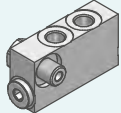
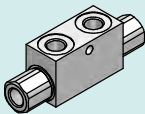
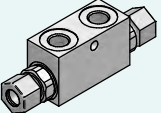
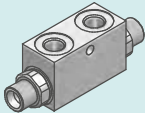
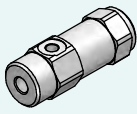
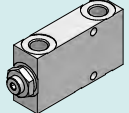
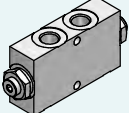
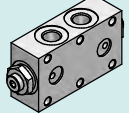
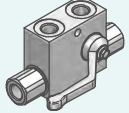
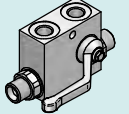
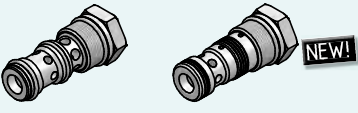
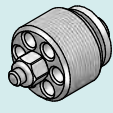
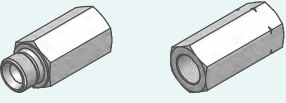
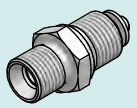


VALVOLE DI BLOCCO PILOTATE PILOT OPERATED CHECK VALVES

	Descrizione - Description	Type	Page
	VALVOLA DI BLOCCO PILOTATA - (TENUTA A CONO) PILOT OPERATED CHECK VALVE - (POPPET TYPE)	VRSE...CIL VRDE...CIL	252
	VALVOLA DI BLOCCO PILOTATA - (TENUTA A CONO) PILOT OPERATED CHECK VALVE - (POPPET TYPE)	VRSE-F...FF VRDE-F...FF	253
	NEW! VALVOLA DI BLOCCO PILOTATA DIN 2353 - (TENUTA A CONO) PILOT OPERATED CHECK VALVE DIN 2353 - (POPPET TYPE)	VRSE-A...FF VRDE-A...FF	254
	VALVOLA DI BLOCCO PILOTATA DIN 2353 - (TENUTA A CONO) PILOT OPERATED CHECK VALVE DIN 2353 - (POPPET TYPE)	VRSE-AZ...FF VRDE-AZ...FF	255
	VALVOLA DI BLOCCO PILOTATA - (TENUTA A CONO) PILOT OPERATED CHECK VALVE - (POPPET TYPE)	VBPS	256
	NEW! VALVOLA DI BLOCCO PILOTATA - (TENUTA A CONO) PILOT OPERATED CHECK VALVE - (POPPET TYPE)	VPSE	256
	VALVOLA DI BLOCCO PILOTATA - (TENUTA A CONO) PILOT OPERATED CHECK VALVE - (POPPET TYPE)	VPDE	257
	VALVOLA DI BLOCCO PILOTATA - (TENUTA A CONO) PILOT OPERATED CHECK VALVE - (POPPET TYPE)	VPDE/F	257
	VALVOLA DI BLOCCO PILOTATA + BY PASS (TENUTA A CONO) PILOT OPERATED CHECK VALVE + BY PASS (POPPET TYPE)	VPRSE	258
	VALVOLA DI BLOCCO PILOTATA DIN 2353 + BY PASS (TENUTA A CONO) PILOT OPERATED CHECK VALVE DIN 2353 + BY PASS (POPPET TYPE)	VPRSE-DIN	258
	NEW! VALVOLA DI BLOCCO PILOTATA - (TENUTA A CONO) PILOT OPERATED CHECK VALVE - (POPPET TYPE)	VRPC VCP	259
	VALVOLA PARACADUTE HOSE BURST VALVE	VUBA	260
	COLLETTORE PER VALVOLA "VUBA" "VUBA" VALVE ADAPTER	CMF x VUBA CFF x VUBA	260
	NEW! VALVOLA PARACADUTE DIN 2353 HOSE BURST VALVE DIN 2353	VUBA DIN	261

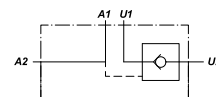
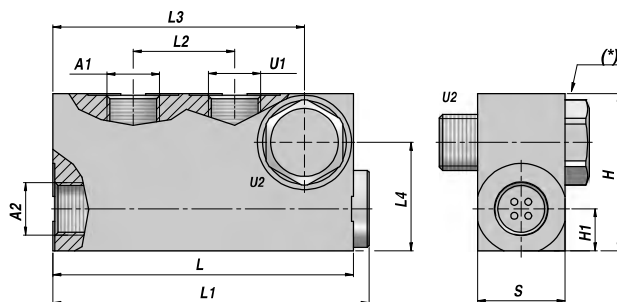
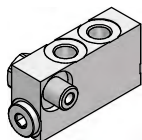
VALVOLE DI BLOCCO PILOTATE - PILOT OPERATED CHECK VALVES

VRSE...CIL

NEW!

SEMPLICE EFFETTO
SINGLE ACTING

VALVOLA DI BLOCCO PILOTATA (TENUTA A CONO)
PILOT OPERATED CHECK VALVE (POPPET TYPE)



Codice Code	A1 - U1 BSP	A2 - U2 BSP	Q MAX l/min	P MAX bar	PILOT RATIO	Tipo Type	L	L1	L2	L3	L4	H1	H	S	kg
VSG325.B10450	1/4"	1/4"	20	300	1:4.9	VRSE 010 CIL	84	88.5	24	68.5	27	10	40	20	0,45
VSG325.B20490	3/8"	3/8"	20	300	1:4.9	VRSE 020 CIL	86	90.5	26	72.0	31	12	45	25	0,65

Pressione di apertura - Opening pressure : 1 bar

(*) = Coppia di serraggio - Tightening torque

VRSE 010 CIL 1/4" = 40 Nm - VRSE 010 CIL 3/8" = 55 Nm

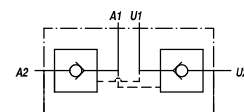
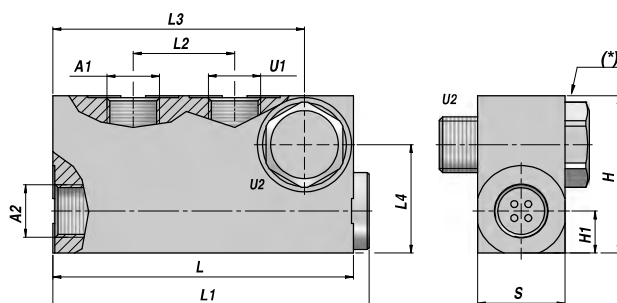
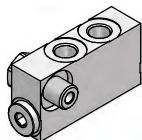
MATERIALE CORPO : ACCIAIO
BODY MATERIAL : STEEL

MONTAGGIO SU CILINDRO
CYLINDER MOUNTING

VRDE...CIL

DOPPIO EFFETTO
DOUBLE ACTING

VALVOLA DI BLOCCO PILOTATA (TENUTA A CONO)
PILOT OPERATED CHECK VALVE (POPPET TYPE)



Codice Code	A1 - U1 BSP	A2 - U2 BSP	Q MAX l/min	P MAX bar	PILOT RATIO	Tipo Type	L	L1	L2	L3	L4	H1	H	S	kg
VSG326.B10450	1/4"	1/4"	20	300	1:4.9	VRDE 010 CIL	84	88.5	24	68.5	27	10	40	20	0,45
VSG326.B20490	3/8"	3/8"	20	300	1:4.9	VRDE 020 CIL	86	90.5	26	72.0	31	12	45	25	0,65

Pressione di apertura - Opening pressure : 1 bar

(*) = Coppia di serraggio - Tightening torque

VRDE 010 CIL 1/4" = 40 Nm - VRDE 010 CIL 3/8" = 55 Nm

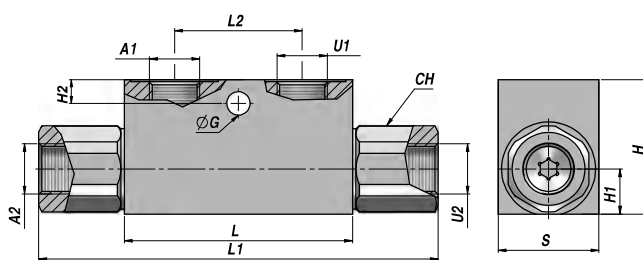
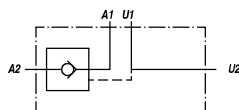
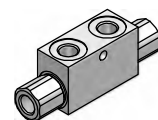
MATERIALE CORPO : ACCIAIO
BODY MATERIAL : STEEL

MONTAGGIO SU CILINDRO
CYLINDER MOUNTING

VALVOLA DI BLOCCO PILOTATA - (TENUTA A CONO)
PILOT OPERATED CHECK VALVE - (POPPET TYPE)

SEMPLICE EFFETTO
SINGLE ACTING

VRSE-F ...FF



Code Code	A1 - U1 BSP	A2 - U2 BSP	Q MAX l/min	P MAX bar	PILOT RATIO	Tipo Type	L	L1	L2	H1	H2	ØG	CH	H	S	kg
VSG311.F00404	1/8"	1/8"	20	350	1:4.5	VRSE-F 005 FF	53	86	20	11	-	-	17	30	20	0,40
VSG311.F10454	1/4"	1/4"	30	350	1:4.5	VRSE-F 010 FF	68	118	38	13	7	7.0	24	40	30	0,68
VSG311.F15454	3/8"	3/8"	30	350	1:4.5	VRSE-F 015 FF	68	118	38	13	7	7.0	24	40	30	0,63
VSG311.F20404	3/8"	3/8"	50	300	1:4	VRSE-F 020 FF	80	144	40	16	15	8.5	27	50	30	0,97
VSG311.F25404	1/2"	1/2"	50	300	1:4	VRSE-F 025 FF	80	144	40	16	15	8.5	27	50	30	0,90
VSG311.F30404	1/2"	1/2"	80	300	1:4	VRSE-F 030 FF	90	171	40	20	15	8.5	30	60	40	1,69
VSG311.F40404	3/4"	3/4"	120	300	1:4	VRSE-F 040 FF	107	196	60	23	16	8.5	41	70	50	3,06

Pressione di apertura - Opening pressure : bar 0.5 - 4 (standard) - 8

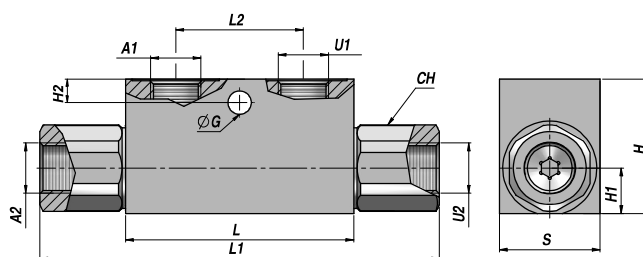
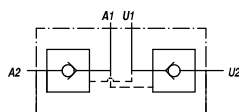
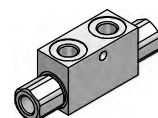
MATERIALE CORPO : ACCIAIO
BODY MATERIAL : STEEL

MONTAGGIO SU CILINDRO
CYLINDER MOUNTING

VALVOLA DI BLOCCO PILOTATA - (TENUTA A CONO)
PILOT OPERATED CHECK VALVE - (POPPET TYPE)

DOPPIO EFFETTO
DOUBLE ACTING

VRDE-F ...FF



Code Code	A1 - U1 BSP	A2 - U2 BSP	Q MAX l/min	P MAX bar	PILOT RATIO	Tipo Type	L	L1	L2	H1	H2	ØG	CH	H	S	kg
VSG312.F00404	1/8"	1/8"	20	350	1:4.5	VRDE-F 005 FF	53	86	20	11	-	-	17	30	20	0,40
VSG312.F10454	1/4"	1/4"	30	350	1:4.5	VRDE-F 010 FF	68	118	38	13	7	7.0	24	40	30	0,69
VSG312.F15454	3/8"	3/8"	30	350	1:4.5	VRDE-F 015 FF	68	118	38	13	7	7.0	24	40	30	0,64
VSG312.F20404	3/8"	3/8"	50	300	1:4	VRDE-F 020 FF	80	144	40	16	15	8.5	27	50	30	0,98
VSG312.F25404	1/2"	1/2"	50	300	1:4	VRDE-F 025 FF	80	144	40	16	15	8.5	27	50	30	0,91
VSG312.F30404	1/2"	1/2"	80	300	1:4	VRDE-F 030 FF	90	171	40	20	15	8.5	30	60	40	1,72
VSG312.F40404	3/4"	3/4"	120	300	1:4	VRDE-F 040 FF	107	196	60	23	16	8.5	41	70	50	3,11

Pressione di apertura - Opening pressure : bar 0.5 - 4 (standard) - 8

MATERIALE CORPO : ACCIAIO
BODY MATERIAL : STEEL

MONTAGGIO SU CILINDRO
CYLINDER MOUNTING

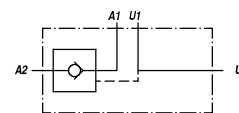
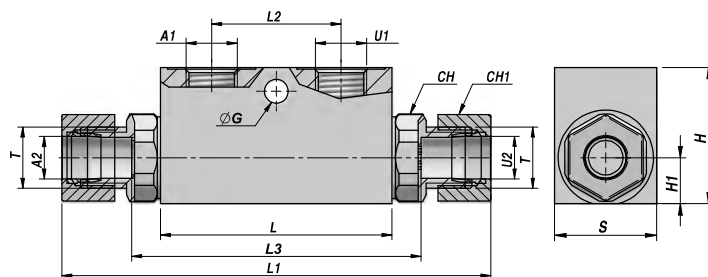
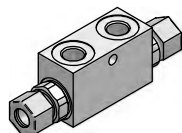
VALVOLE DI BLOCCO PILOTATE - PILOT OPERATED CHECK VALVES

VRSE-A...FF

NEW!

SEMPLICE EFFETTO
SINGLE ACTING

VALVOLA DI BLOCCO PILOTATA DIN 2353 - (TENUTA A CONO)
PILOT OPERATED CHECK VALVE DIN 2353 - (POPPET TYPE)



CON DADO E ANELLO DI SERRAGGIO
WITH NUT AND CUTTING RING

Codice Code	A1 - U1 BSP	A2 - U2	T	Q MAX l/min	P MAX bar	PILOT RATIO	Tipo Type	L	L1	L2	L3	H1	H2	ØG	CH	CH1	H	S	kg
VSG323.F05454	1/4"	Ø10	M16x1.5	20	350	1:4.5	VRSE-A 005 FF	68	138	38	86	13	7	7.0	24	20	40	30	0,64
VSG323.F10454	1/4"	Ø12	M18x1.5	30	350	1:4.5	VRSE-A 010 FF	68	138	38	86	13	7	7.0	24	22	40	30	0,67
VSG323.F14454	3/8"	Ø10	M16x1.5	20	350	1:4.5	VRSE-A 014 FF	68	138	38	86	13	7	7.0	24	20	40	30	0,63
VSG323.F15454	3/8"	Ø12	M18x1.5	30	350	1:4.5	VRSE-A 015 FF	68	138	38	86	13	7	7.0	24	22	40	30	0,66
VSG323.F20404	3/8"	Ø15	M22x1.5	50	300	1:4	VRSE-A 020 FF	80	166	40	108	16	15	8.5	27	27	50	30	0,97
VSG323.F25404	1/2"	Ø15	M22x1.5	50	300	1:4	VRSE-A 025 FF	80	166	40	108	16	15	8.5	27	27	50	30	0,91
VSG323.F30404	1/2"	Ø18	M26x1.5	80	300	1:4	VRSE-A 030 FF	90	180	40	133	20	15	8.5	30	32	60	40	1,67

Pressione di apertura - Opening pressure : bar 0.5 - 4 (standard) - 8

MATERIALE CORPO : ACCIAIO
BODY MATERIAL : STEEL

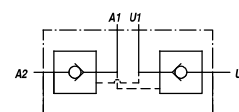
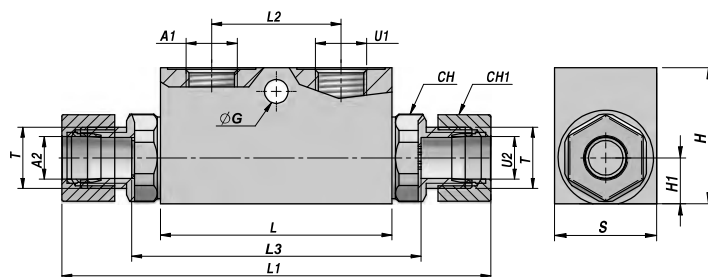
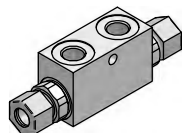
MONTAGGIO SU CILINDRO
CYLINDER MOUNTING

VRDE-A...FF

NEW!

DOBPIO EFFETTO
DOUBLE ACTING

VALVOLA DI BLOCCO PILOTATA DIN 2353 - (TENUTA A CONO)
PILOT OPERATED CHECK VALVE DIN 2353 - (POPPET TYPE)



CON DADO E ANELLO DI SERRAGGIO
WITH NUT AND CUTTING RING

Codice Code	A1 - U1 BSP	A2 - U2	T	Q MAX l/min	P MAX bar	PILOT RATIO	Tipo Type	L	L1	L2	L3	H1	H2	ØG	CH	CH1	H	S	kg
VSG324.F05454	1/4"	Ø10	M16x1.5	20	350	1:4.5	VRDE-A 005 FF	68	138	38	86	13	7	7.0	24	20	40	30	0,64
VSG324.F10454	1/4"	Ø12	M18x1.5	30	350	1:4.5	VRDE-A 010 FF	68	138	38	86	13	7	7.0	24	22	40	30	0,67
VSG324.F14454	3/8"	Ø10	M16x1.5	20	350	1:4.5	VRDE-A 014 FF	68	138	38	86	13	7	7.0	24	20	40	30	0,63
VSG324.F15454	3/8"	Ø12	M18x1.5	30	350	1:4.5	VRDE-A 015 FF	68	138	38	86	13	7	7.0	24	22	40	30	0,66
VSG324.F20404	3/8"	Ø15	M22x1.5	50	300	1:4	VRDE-A 020 FF	80	166	40	108	16	15	8.5	27	27	50	30	0,97
VSG324.F25404	1/2"	Ø15	M22x1.5	50	300	1:4	VRDE-A 025 FF	80	166	40	108	16	15	8.5	27	27	50	30	0,91
VSG324.F30404	1/2"	Ø18	M26x1.5	80	300	1:4	VRDE-A 030 FF	90	180	40	133	20	15	8.5	30	32	60	40	1,67

Pressione di apertura - Opening pressure : bar 0.5 - 4 (standard) - 8

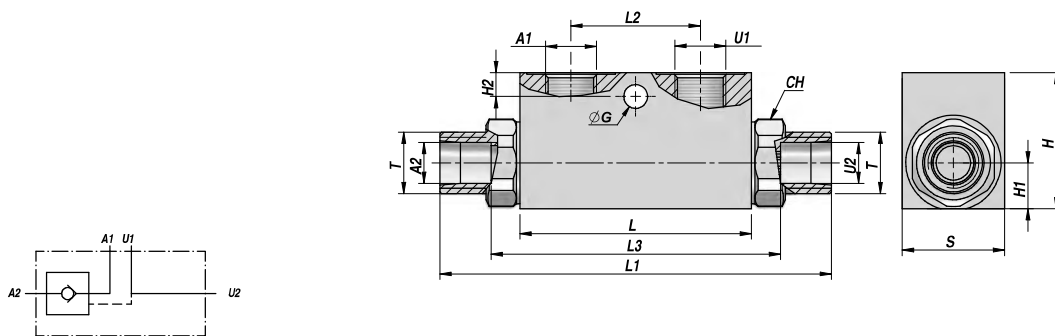
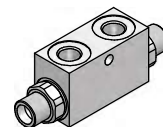
MATERIALE CORPO : ACCIAIO
BODY MATERIAL : STEEL

MONTAGGIO SU CILINDRO
CYLINDER MOUNTING

VALVOLA DI BLOCCO PILOTATA DIN 2353 - (TENUTA A CONO)
PILOT OPERATED CHECK VALVE DIN 2353 - (POPPET TYPE)

SEMPLICE EFFETTO
SINGLE ACTING

VRSE-AZ...FF



SENZA DADO E ANELLO DI SERRAGGIO
WITHOUT NUT AND CUTTING RING

Codice Code	A1 - U1 BSP	A2 - U2	T	Q MAX l/min	P MAX bar	PILOT RATIO	Tipo Type	L	L1	L2	L3	H1	H2	ØG	CH	H	S	kg
VSG321.F05454 NEW!	1/4"	Ø10	M16x1.5	20	350	1:4.5	VRSE-AZ 005 FF	68	115	38	86	13	7	7.0	24	40	30	0.59
VSG321.F10454	1/4"	Ø12	M18x1.5	30	350	1:4.5	VRSE-AZ 010 FF	68	115	38	86	13	7	7.0	24	40	30	0.62
VSG321.F14454 NEW!	3/8"	Ø10	M16x1.5	20	350	1:4.5	VRSE-AZ 014 FF	68	115	38	86	13	7	7.0	24	40	30	0.58
VSG321.F15454	3/8"	Ø12	M18x1.5	30	350	1:4.5	VRSE-AZ 015 FF	68	115	38	86	13	7	7.0	24	40	30	0.61
VSG321.F20404	3/8"	Ø15	M22x1.5	50	300	1:4	VRSE-AZ 020 FF	80	140	40	108	16	15	8.5	27	50	30	0.88
VSG321.F25404	1/2"	Ø15	M22x1.5	50	300	1:4	VRSE-AZ 025 FF	80	140	40	108	16	15	8.5	27	50	30	0.82
VSG321.F30404	1/2"	Ø18	M26x1.5	80	300	1:4	VRSE-AZ 030 FF	90	152	40	133	20	15	8.5	30	60	40	1.54

Pressione di apertura - Opening pressure : bar 0,5 - 4 (standard) - 8

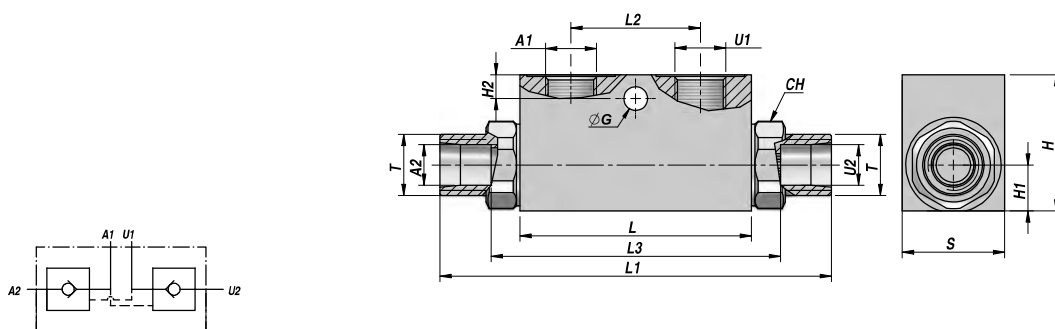
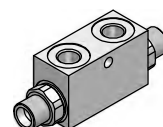
MATERIALE CORPO : ACCIAIO
BODY MATERIAL : STEEL

MONTAGGIO SU CILINDRO
CYLINDER MOUNTING

VALVOLA DI BLOCCO PILOTATA DIN 2353 - (TENUTA A CONO)
PILOT OPERATED CHECK VALVE DIN 2353 - (POPPET TYPE)

DOPPIO EFFETTO
DOUBLE ACTING

VRDE-AZ...FF



SENZA DADO E ANELLO DI SERRAGGIO
WITHOUT NUT AND CUTTING RING

Codice Code	A1 - U1 BSP	A2 - U2	T	Q MAX l/min	P MAX bar	PILOT RATIO	Tipo Type	L	L1	L2	L3	H1	H2	ØG	CH	H	S	kg
VSG322.F05454 NEW!	1/4"	Ø10	M16x1.5	20	350	1:4.5	VRDE-AZ 005 FF	68	115	38	86	13	7	7.0	24	40	30	0.59
VSG322.F10454	1/4"	Ø12	M18x1.5	30	350	1:4.5	VRDE-AZ 010 FF	68	115	38	86	13	7	7.0	24	40	30	0.62
VSG322.F14454 NEW!	3/8"	Ø10	M16x1.5	20	350	1:4.5	VRDE-AZ 014 FF	68	115	38	86	13	7	7.0	24	40	30	0.58
VSG322.F15454	3/8"	Ø12	M18x1.5	30	350	1:4.5	VRDE-AZ 015 FF	68	115	38	86	13	7	7.0	24	40	30	0.61
VSG322.F20404	3/8"	Ø15	M22x1.5	50	300	1:4	VRDE-AZ 020 FF	80	140	40	108	16	15	8.5	27	50	30	0.88
VSG322.F25404	1/2"	Ø15	M22x1.5	50	300	1:4	VRDE-AZ 025 FF	80	140	40	108	16	15	8.5	27	50	30	0.82
VSG322.F30404	1/2"	Ø18	M26x1.5	80	300	1:4	VRDE-AZ 030 FF	90	152	40	133	20	15	8.5	30	60	40	1.54

Pressione di apertura - Opening pressure : bar 0,5 - 4 (standard) - 8

MATERIALE CORPO : ACCIAIO
BODY MATERIAL : STEEL

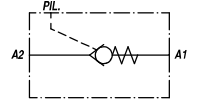
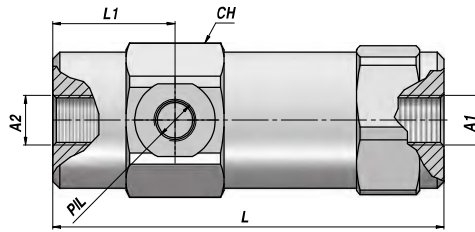
MONTAGGIO SU CILINDRO
CYLINDER MOUNTING

VALVOLE DI BLOCCO PILOTATE - PILOT OPERATED CHECK VALVES

VBPS

SEMPLICE EFFETTO
SINGLE ACTING

VALVOLA DI BLOCCO PILOTATA - (TENUTA A CONO)
PILOT OPERATED CHECK VALVE - (POPPET TYPE)



Codice Code	A1 - A2 BSP	PIL BSP	Q MAX l/min	P MAX bar	PILOT RATIO	Tipo Type	L	L1	CH	kg
VSG341.109500	1/4"	1/4"	25	350	1:9.5	VBPS 010	103.0	32.5	36	0,69
VSG341.206000	3/8"	1/4"	40	350	1:6	VBPS 020	111.0	35.0	40	0,93
VSG341.304300	1/2"	1/4"	60	350	1:4.3	VBPS 030	122.0	38.0	42	1,08
VSG341.404000	3/4"	1/4"	90	300	1:4.4	VBPS 040	145.5	44.5	55	2,32
VSG341.503500	1"	1/4"	130	260	1:3.5	VBPS 050	164.0	44.5	55	2,36

Pressione di apertura - Opening pressure : bar 1 (standard) - 4 - 8

MATERIALE CORPO : ACCIAIO
BODY MATERIAL : STEEL

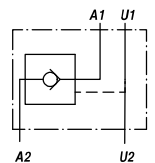
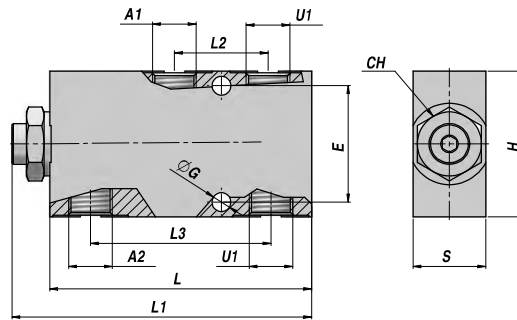
MONTAGGIO IN LINEA
LINE MOUNTING

VPSE

NEW!

SEMPLICE EFFETTO
SINGLE ACTING

VALVOLA DI BLOCCO PILOTATA - (TENUTA A CONO)
PILOT OPERATED CHECK VALVE - (POPPET TYPE)



Codice Code	A1 - U1 BSP	A2 - U2 BSP	Q MAX l/min	P MAX bar	PILOT RATIO	Tipo Type	L	L1	L2	L3	ØG	E	H	S	kg
VAG350.207004	3/8"	3/8"	35	350	1:7	VPSE 020	83	95	34	49	6.5	40	60	35	0,53
VAG350.257004	1/2"	1/2"	35	350	1:7	VPSE 025	83	95	34	49	6.5	40	60	35	0,49

Pressione di apertura - Opening pressure : bar 0,5 - 4 (standard) - 8

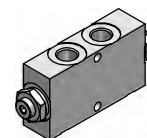
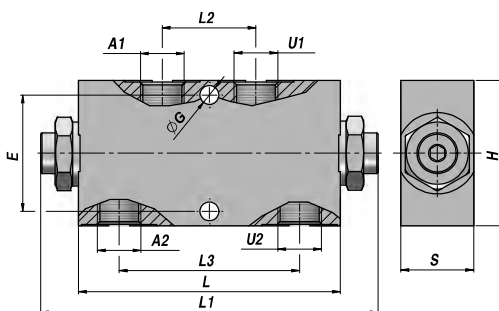
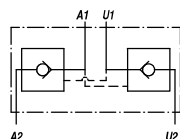
MATERIALE CORPO : ALLUMINIO
BODY MATERIAL : ALUMINIUM

MONTAGGIO IN LINEA
LINE MOUNTING

VALVOLA DI BLOCCO PILOTATA (TENUTA A CONO)
PILOT OPERATED CHECK VALVE (POPPET TYPE)

DOPPIO EFFETTO
DOUBLE ACTING

VPDE



Codice Code	A1 - U1 BSP	A2 - U2 BSP	Q MAX l/min	P MAX bar	PILOT RATIO	Tipo Type	L	L1	L2	L3	ØG	E	H	S	kg
VSG352.104004 **	1/4"	1/4"	20	350	1:4	VPDE 010	90	113	32	62	6.5	40	50	25	0,79
VSG352.154004 **	3/8"	3/8"	20	350	1:4	VPDE 015	90	113	32	62	6.5	40	50	25	0,76
VAG352.207004 *	3/8"	3/8"	35	350	1:7	VPDE 020	96	113	32	62	6.5	40	60	35	0,62
VAG352.257004 *	1/2"	1/2"	35	350	1:7	VPDE 025	96	113	32	62	6.5	40	60	35	0,60
VAG352.305004 *	1/2"	1/2"	50	300	1:5.2	VPDE 030	117	139	43	84	10.1	40	70	40	1,00

Pressione di apertura - Opening pressure : bar 0.5 - 4 (standard) - 8

** Tenuta a sfera - Ball type

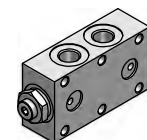
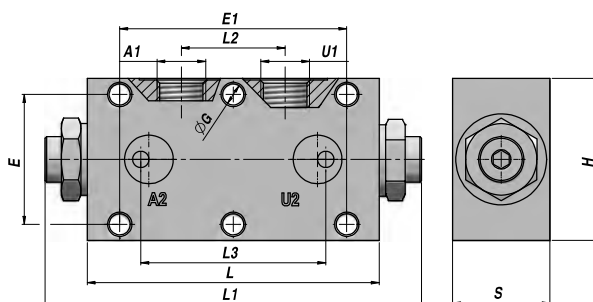
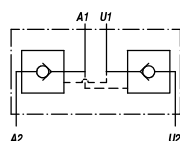
MATERIALE CORPO : ACCIAIO /* = ALLUMINIO
BODY MATERIAL : STEEL /* = ALUMINIUM

MONTAGGIO IN LINEA
LINE MOUNTING

VALVOLA DI BLOCCO PILOTATA (TENUTA A CONO)
PILOT OPERATED CHECK VALVE (POPPET TYPE)

DOPPIO EFFETTO
DOUBLE ACTING

VPDE/F



Codice Code	A1 - U1 BSP	A2 - U2	Q MAX l/min	P MAX bar	PILOT RATIO	Tipo Type	L	L1	L2	L3	ØG	E	E1	H	S	kg
VAG353.104004 **	1/4"	Ø5	20	350	1:4	VPDE-F 010	90	113	32	52	6.5	40	70	50	30	0,43
VAG353.154004 **	3/8"	Ø5	20	350	1:4	VPDE-F 015	90	113	32	52	6.5	40	70	50	30	0,43
VAG353.207004 *	3/8"	Ø5	35	350	1:7	VPDE-F 020	96	113	32	62	6.5	40	70	60	35	0,60
VAG353.257004 *	1/2"	Ø5	35	350	1:7	VPDE-F 025	96	113	32	62	6.5	40	70	60	35	0,60

Pressione di apertura - Opening pressure : bar 0,5 - 4 (standard) - 8

** Tenuta a sfera - Ball type

MATERIALE CORPO : ACCIAIO /* = ALLUMINIO
BODY MATERIAL : STEEL /* = ALUMINIUM

FLANGIABILE
FACE MOUNTING