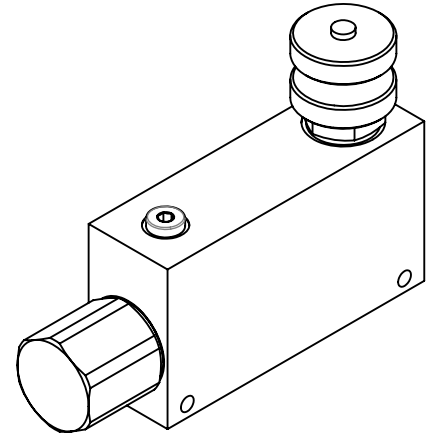
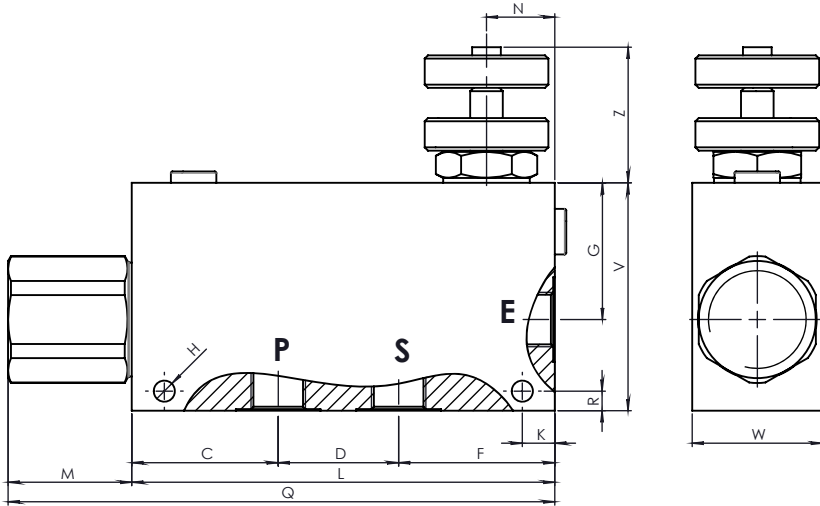
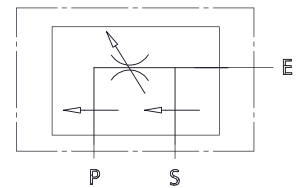


## Dimensions



## Hydraulic Symbol

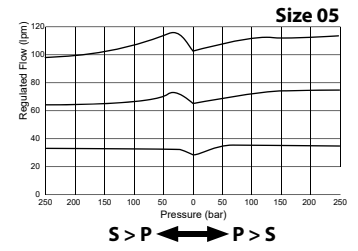
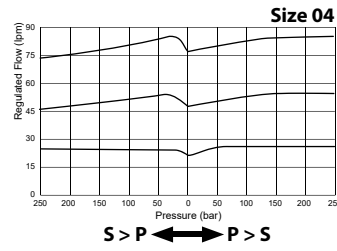
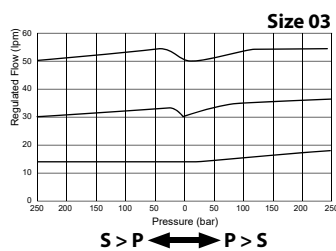
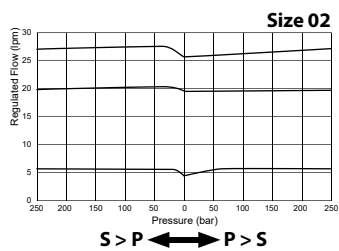


## Features

Size	02	03	04	05
Max Pressure (bar)	260	260	260	260
Max Inlet Flow (lpm)	50	85	150	190
Max Adjustmrt Flow (lpm)	40	60	90	120

Size	E-P-S BSP	C	D	F	G	H	K	L	M	N	R	Q	V	W	Z	Weight kg
02	3/8	48	37	45	42	8,5	10	130	38	21	6	172	70	40	42 <sub>max</sub>	1,37
03	1/2	48	37	45	42	8,5	10	130	38	21	6	172	70	40	42 <sub>max</sub>	1,37
04	3/4	57	44	54	55	8,5	10	155	35	25	7	190	90	50	45 <sub>max</sub>	2,44
05	1	55	50	50	58	8,5	10	155	35	25	7	190	100	50	45 <sub>max</sub>	2,54

## Curves



**Materials:** Aluminium body, hardened steel inner parts.

## Ordering Code

**PVEL** --

Size BSP	
02	3/8
03	1/2
04	3/4
05	1

**Ordering Code Example:** PVEL03 = 1/2 BSP.