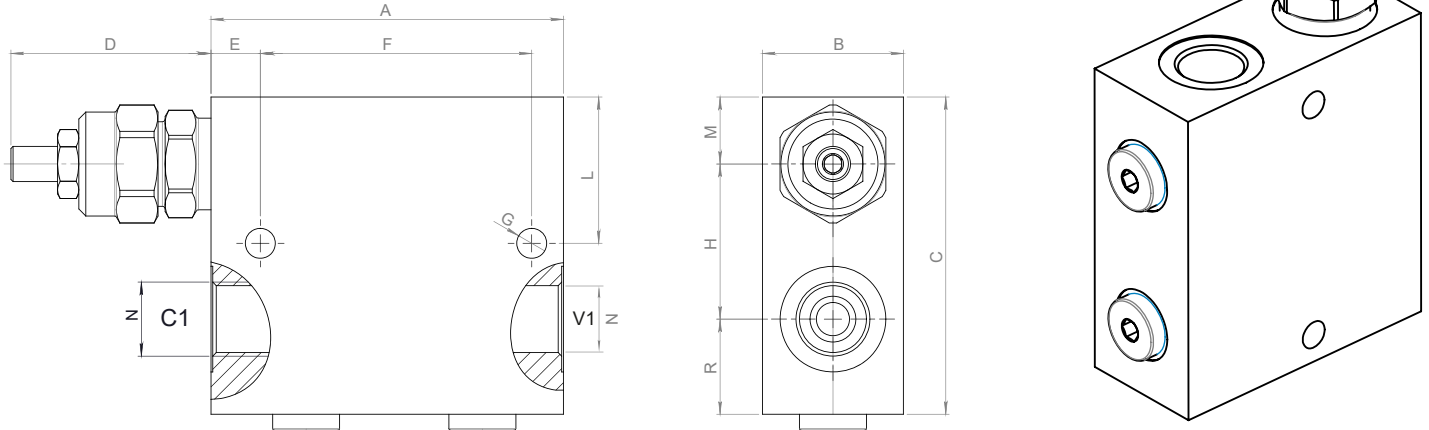
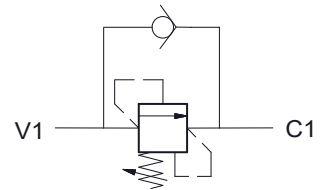


Dimensions

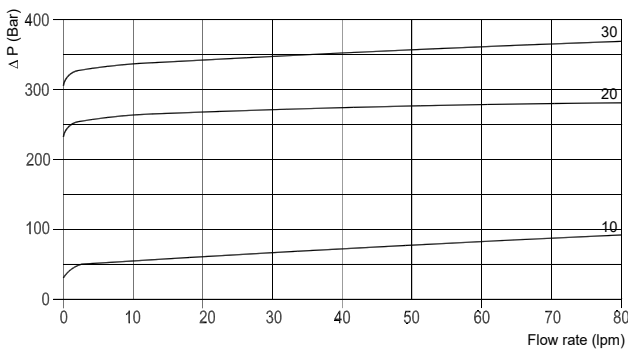


Size	A	B	C	D max	E	F	G	H	L	N BSP	M	R	Weight kg
03	100	40	90	57	14	77	8,5	44	41,5	1/2	19	27	1,2
04	100	40	90	57	14	77	8,5	44	41,5	3/4	19	27	1,16

Hydraulic Symbol



Curves



Features

Rated Flow (lpm)	80
Max Pressure (bar)	260

Materials: Zinc plated steel cartridge, hardened steel inner parts.
Aluminium manifold.

Ordering Code

SV 80 -- -- -

Port Size BSP		Spring (bar)	
03	1/2	10	5-50
04	3/4	20	30-260
		30	130-350

Adjustments

A		Socket Screw
B		Handknob
C		Tamperproof Cap

Ordering Code Example: SV800320A = 1/2 Port Size - 30-260 bar setting range, Socket screw adjustment.