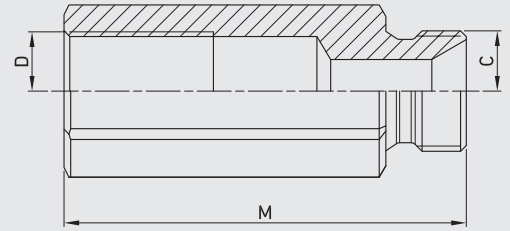
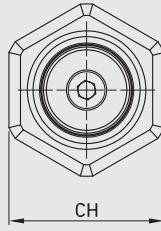


VBF Female housing



VBM Male housing

VBF Female housing

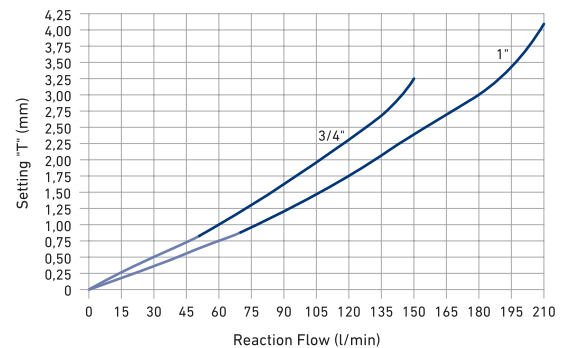
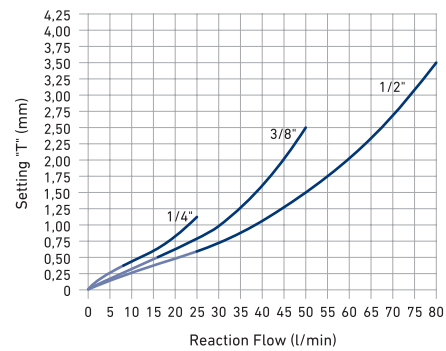
TYPE	CS	C-D	B		M		WEIGHT	Q (L/1')	ITEM CODE
			mm	inch	mm	inch			
VBF G 1/4	1/4	G 1/4	mm	19	48	kg	0,01	28	C01AA03583A010Z
			inch	0,75	1,89	lb	0,02		
VBF G 3/8	3/8	G 3/8	mm	22	52	kg	0,01	50	C01AA03584A010Z
			inch	0,87	2,05	lb	0,02		
VBF G 1/2	1/2	G 1/2	mm	27	60	kg	0,02	85	C01AA03585A010Z
			inch	1,06	2,36	lb	0,04		
VBF G 3/4	3/4	G 3/4	mm	36	72	kg	0,05	150	C01AA03586A010Z
			inch	1,42	2,83	lb	0,11		
VBF G 1	1	G 1	mm	46	85	kg	0,09	180	C01AA03587A010Z
			inch	1,81	3,35	lb	0,20		

VBM Male housing

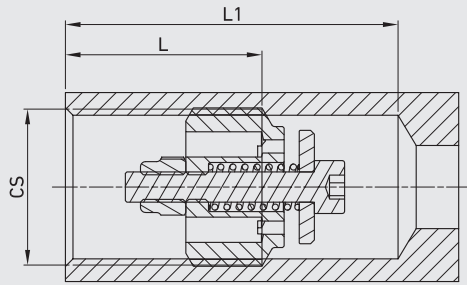
TYPE	CS	C-D	B		M		WEIGHT	Q (L/1')	ITEM CODE
			mm	inch	mm	inch			
VBM G 1/4	1/4	G 1/4	mm	19	48	kg	0,01	28	C01AA03578A010Z
			inch	0,75	1,89	lb	0,02		
VBM G 3/8	3/8	G 3/8	mm	22	58	kg	0,01	50	C01AA03579A010Z
			inch	0,87	2,28	lb	0,02		
VBM G 1/2	1/2	G 1/2	mm	27	65	kg	0,02	85	C01AA03580A010Z
			inch	1,06	2,56	lb	0,04		
VBM G 3/4	3/4	G 3/4	mm	36	78	kg	0,05	150	C01AA03581A010Z
			inch	1,42	3,07	lb	0,11		
VBM G 1	1	G 1	mm	46	85	kg	0,09	180	C01AA03582A010Z
			inch	1,81	3,35	lb	0,20		

PRESSURE DROP CURVES

For actuator moved by directional control valve, the reaction flow has to be calculated multiply the nominal flow by 1.5 and by 2 for actuator moved by solenoid operated directional control valve. It is normal to set the reaction flow 1,5 times the rate flow of the system. If not required, the setting of "T" will be supplied at the maximum value.



Warning
the setting values indicated in this diagram are indicative, for any setting value of "T", the reaction flow can change by ±10 % and beyond based on the features of the equipment in which they are installed.



Applications
Screw in the valve connecting 1 to the pressure flow and 2 to the actuator.
The use together with flow control valve is recommended.

VB + VBF Assembled (Female-Female)

CS
Carbon Steel

TYPE	FLOW min-max l/min	MAX PRESSURE	T	CS	CAVITY		ITEM CODE	
					L	L1		
VB G 1/4	8-25	35 MPa 5075 PSI	see diagram	1/4	mm	24,2	35,2	G480202A0100PAA
					inch	0,95	1,39	
VB G 3/8	16-50			3/8	mm	26,2	37,1	G480203A0100PAA
					inch	1,03	1,46	
VB G 1/2	25-80			1/2	mm	30,3	45,2	G480204A0100PAA
					inch	1,19	1,78	
VB G 3/4	50-150			3/4	mm	38,1	54,2	G480205A0100PAA
					inch	1,50	2,13	
VB G 1	70-200			1	mm	46,2	66,1	G480206A0100PAA
					inch	1,82	2,60	

VB + VBM Assembled (Male-Female)

CS
Carbon Steel

TYPE	FLOW min-max l/min	MAX PRESSURE	T	CS	CAVITY		ITEM CODE	
					L	L1		
VB G 1/4	8-25	35 MPa 5075 PSI	see diagram	1/4	mm	24,2	35,2	G580302A0100PAA
					inch	0,95	1,39	
VB G 3/8	16-50			3/8	mm	26,2	37,1	G580303A0100PAA
					inch	1,03	1,46	
VB G 1/2	25-80			1/2	mm	30,3	45,2	G580304A0100PAA
					inch	1,19	1,78	
VB G 3/4	50-150			3/4	mm	38,1	54,2	G580305A0100PAA
					inch	1,50	2,13	
VB G 1	70-200			1	mm	46,2	66,1	G580306A0100PAA
					inch	1,82	2,60	