

# Hyblast Tail

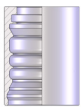
# H



**INTERPUMP**  
FLUID SOLUTIONS 



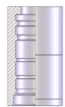
**00S4**



Swaged Ferrule  
(Skive)

265

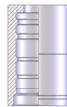
**00Y4**



Swaged Ferrule  
(Skive)

265

**00Y6**



Swaged Ferrule  
(Skive)

266



**0050W**



BSP Female 60° Cone  
Thrust Wire

266



**0350W**



BSP Male Parallel 60°  
Cone

266



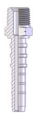
**0370W**



NPTF Male 60° Cone

267

**0370Y**



NPTF Male 60° Cone

267



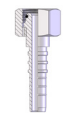
**0084W**



Metric Female 24°  
Seat Heavy

268

**0084Y**



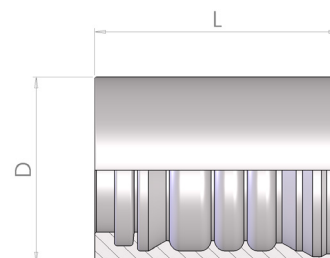
Metric Female 24°  
Seat Heavy

268

## 00S4

**Swaged Ferrule (Skive)**

Boccola a Pressare (Skive)

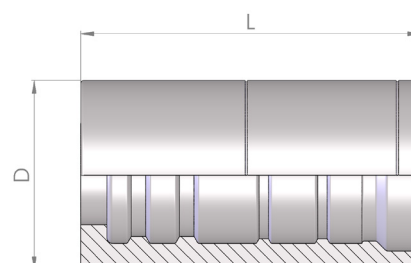


Part number	Hose I.D.		Dimensions	
	in	mm	D	L
00S4-06	3/8	9.5	28	45.5
00S4-08	1/2	12.7	33	50.3
00S4-12	3/4	19	41	56
00S4-16	1	25.4	51	67.2

## 00Y4

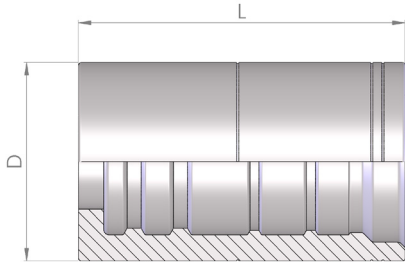
**Swaged Ferrule (Skive)**

Boccola a Pressare (Skive)



Part number	Hose I.D.		Dimensions	
	in	mm	D	L
00Y4-06	3/8	9.5	32.5	58.5
00Y4-08	1/2	12.7	36.5	62
00Y4-12	3/4	19	43.8	69

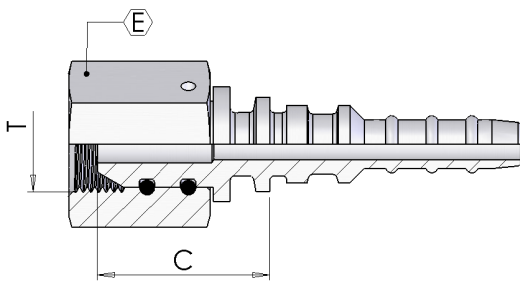
## 00Y6



### Swaged Ferrule (Skive) Boccola a Pressare (Skive)

Part number	Hose I.D.		Dimensions	
	in	mm	D	L
00Y6-06	3/8	9.5	35.5	58.5
00Y6-08	1/2	12.7	39.8	62
00Y6-12	3/4	19	47	69

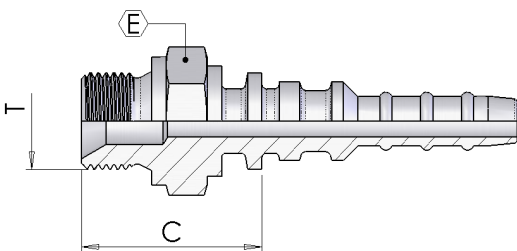
## 0050W



### BSP Female 60° Cone - Thrust Wire Femmina BSP Cono 60° - Dado Spinato

Part number	Hose I.D.		Dimensions			
	in	mm	Dash size	Thread T	Hex E	Cut-Off C
0050W08-08	1/2	12.7	08	1/2-14	30	33
0050W12-12	3/4	19	12	3/4-14	32	37
0050W16-16	1	25.4	16	1-11	38	40

## 0350W



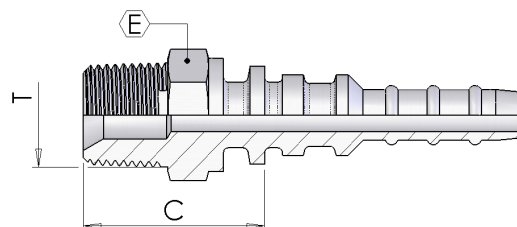
### BSP Male Parallel 60° Cone Maschio BSP svas. 60°

Part number	Hose I.D.		Dimensions			
	in	mm	Dash size	Cut-Off C	T	E
0350W08-08	1/2	12.7	08	36	1/2-14	27
0350W12-12	3/4	19	12	39	3/4-14	32

## 0370W

### NPTF Male 60° Cone

Maschio NPTF svas. 60°



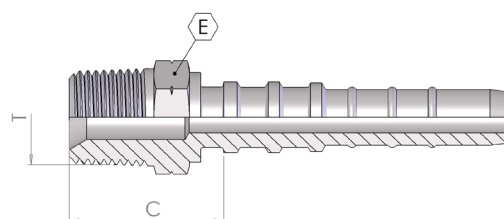
Part number	Hose I.D.		Dimensions			
	in	mm	Dash size	Cut-Off C	T	E
0370W06-06	3/8	9.5	06	30	3/8-18	19
0370W08-08	1/2	12.7	08	39	1/2-14	22
0370W12-12	3/4	19	12	40	3/4-14	27
0370W16-16	1	25.4	16	49	1-11.1/2	38

H

## 0370Y

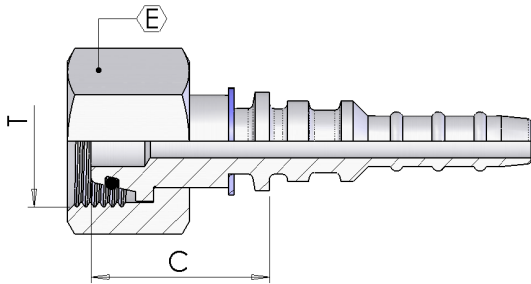
### NPTF Male 60° Cone

Maschio NPTF svas. 60°



Part number	Hose I.D.		Dimensions			
	in	mm	Dash size	Cut-Off C	T	E
0370Y06-06	3/8	9.5	06	29	3/8-18	19
0370Y08-08	1/2	12.7	08	35	1/2-14	22
0370Y12-12	3/4	19	12	37	3/4-14	27

## 0084W

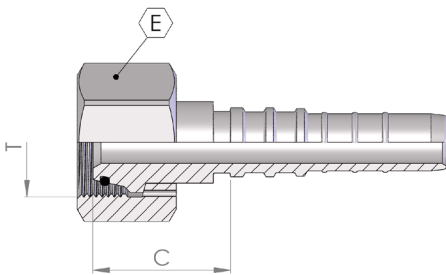


### Metric Female 24° - Seat Heavy Femmina Metrica Cono 24° - Serie Pesante

Part number	Hose I.D.		Dimensions				
	in	mm	Dash size	Erm	Cut-Off C	T	E
0084W06-20	3/8	9.5	06	12	29	M20-1.5	24
0084W06-22	3/8	9.5	06	14	31	M22-1.5	27
0084W06-24	3/8	9.5	06	16	31	M24-1.5	30
0084W08-24	1/2	12.7	08	16	33	M24-1.5	30
0084W12-36	3/4	19	12	25	43	M36-2	46

## H

## 0084Y



### Metric Female 24° - Seat Heavy Femmina Metrica Cono 24° - Serie Pesante

Part number	Hose I.D.		Dimensions				
	in	mm	Dash size	Erm	Cut-Off C	T	E
0084Y06-24	3/8	9.5	06	16	39	M24-1.5	32
0084Y08-24	1/2	12.7	08	16	39	M24-1.5	34
0084Y12-36	3/4	19	12	25	45	M36-2	46