



# INTERPUMP

**FLUID SOLUTIONS** 

Powered by I.M.M. Hydraulics

## Machines

2020



# Machines

We have also available the following catalogues

Carbon Steel fittings

One-Piece fittings

Stainless Steel fittings

Premium Adaptors & Tube Connectors

Machines

Quick Couplings

MGOUIX



## Portable swaging machine 63 Tons COMPAK1

### COMPAK1M

Standard version equipped with hand pump

### COMPAK1P

Standard version equipped with air-hydraulic pump

### COMPAK1M-MODULAR

Modular version equipped with disconnectable head and hand pump

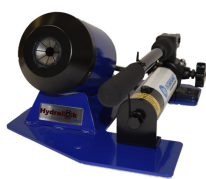
### COMPAK1P-MODULAR

Modular version equipped with disconnectable head and air-hydraulic pump

## Description

Swaging machine with hose capacity up to 1/2" (2 wire). Lightweight, compact and easy to use, it is characterized by an exclusive design and it is suitable to carry out repairs on site.

The machine is factory-fitted with a not-interchangeable master die set, thus making it the perfect choice for specific and routine usage.



COMPAK1M



COMPAK1M-MODULAR



COMPAK1P



COMPAK1P-MODULAR

## Product features and specifications

CRIMPING RANGE* [mm/inch ]	10/0.39			
MAX CRIMPING FORCE [kN/ton]	630/63			
HOSE CAPACITY [inch ]	See die chart			
MAX OPENING ** [mm ]	+34			
MAX WORK OPENING *** [mm ]	+34			
CALIBRATION	dial micrometer			
OPERATION	twin speed hand pump with integrated relief valve/ air-hydraulic pump [690 bar/10.00 psi]			
	COMPAK1M	COMPAK1P	COMPAK1M-MODULAR	COMPAK1P-MODULAR
NET WEIGHT [kg ]	23	25	20	22
GROSS WEIGHT [kg ]	29	31	26	28

\* Any 10mm range between 5 mm and 35 mm available on request.

\*\* The maximum opening of the machine is the result of the sum of this value and the nominal size number of used master sie set.

\*\*\* The maximum working diameter is the result of the sum of this value and the nominal size number of used master die set.

## Die Chart

COMPAK1M	COMPAK1P	COMPAK1M-MODULAR	COMPAK1P-MODULAR	Die code**	Swaging range [mm/inch]	L [mm]
COMPAK1M 5-15	COMPAK1P 5-15	COMPAK1M-MODULAR 5-15	COMPAK1P-MODULAR 5-15	DA10131	5 – 15/0.19 – 0.59	37
COMPAK1M 6.5-16.5	COMPAK1P 6.5-16.5	COMPAK1M-MODULAR 6.5-16.5	COMPAK1P-MODULAR 6.5-16.5	DA10173	6.5 – 16.5/0.25 – 0.65	37
COMPAK1M 7-17	COMPAK1P 7-17	COMPAK1M-MODULAR 7-17	COMPAK1P-MODULAR 7-17	SD10027	7 – 17/0.27 – 0.66	37
COMPAK1M 9-19	COMPAK1P 9-19	COMPAK1M-MODULAR 9-19	COMPAK1P-MODULAR 9-19	DA10257	9 – 19/0.35 – 0.74	37
COMPAK1M 11.3-21.3	COMPAK1P 11.3-21.3	COMPAK1M-MODULAR 11.3-21.3	COMPAK1P-MODULAR 11.3-21.3	DA10207	11.3 – 21.3/0.44 – 0.83	37
COMPAK1M 12-22	COMPAK1P 12-22	COMPAK1M-MODULAR 12-22	COMPAK1P-MODULAR 12-22	SD10026	12 – 22/0.47 – 0.86	37
COMPAK1M 13-23	COMPAK1P 13-23	COMPAK1M-MODULAR 13-23	COMPAK1P-MODULAR 13-23	DA10100	13 – 23/0.51 – 0.90	37
COMPAK1M 13.5-24	COMPAK1P 13.5-24	COMPAK1M-MODULAR 13.5-24	COMPAK1P-MODULAR 13.5-24	SD10039	13.5 – 24/0.53 – 0.94	37
COMPAK1M 14-24	COMPAK1P 14-24	COMPAK1M-MODULAR 14-24	COMPAK1P-MODULAR 14-24	HM30028	14 – 24/0.55 – 0.94	37
COMPAK1M 15-25	COMPAK1P 15-25	COMPAK1M-MODULAR 15-25	COMPAK1P-MODULAR 15-25	DA10263	15 – 25/0.59 – 0.98	37
COMPAK1M 16-26	COMPAK1P 16-26	COMPAK1M-MODULAR 16-26	COMPAK1P-MODULAR 16-26	DA10175	16 – 26/0.63 – 1.02	37
COMPAK1M 17-27	COMPAK1P 17-27	COMPAK1M-MODULAR 17-27	COMPAK1P-MODULAR 17-27	HM30005	17 – 27/0.66 – 1.06	37
COMPAK1M 20-30	COMPAK1P 20-30	COMPAK1M-MODULAR 20-30	COMPAK1P-MODULAR 20-30	DA10158	20 – 30/0.78 – 1.18	37
COMPAK1M 25-35	COMPAK1P 25-35	COMPAK1M-MODULAR 25-35	COMPAK1P-MODULAR 25-35	DA10153	25 – 35/0.98 – 1.37	37

## Portable swaging machine 90 tons H19MM

**H19MM-M-1**

Standard version equipped with manual pump

**H19MM-P-1**

Standard version equipped with air-hydraulic pump

**H19MM-MODULAR-M-1**

Modular version equipped with disconnectable head and hand pump

**H19MM-MODULAR-P-1**

Modular version equipped with disconnectable head and air-hydraulic pump

### Description

Swaging machine with hose capacity up to 3/4" (2 wire). Lightweight, compact and easy to use, and it is ideal to carry out repairs on site.



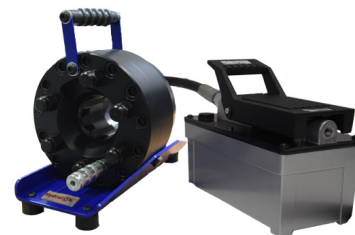
H19MM-M-1



H19MM-P-1



H19MM-MODULAR-M-1



H19MM-MODULAR-P-1

### Product features and specifications

CRIMPING RANGE* [mm/inch]	6-34/0.24-1.34			
MAX CRIMPING FORCE [kN/ton]	900/90			
HOSE CAPACITY [inch]	3/16"-3/4" R1AT/1SN/R2AT/2SN (2 wire) – Straight fittings 3/16"-1/2" R1AT/1SN/R2AT/2SN (2 wire) – 90° fittings			
MAX OPENING ** [mm]	+13			
MAX WORK OPENING *** [mm]	+12			
CALIBRATION	Dial micrometer			
OPERATION	Twin speed hand pump with integrated relief valve/ air- hydraulic pump [690 bar/10.000 psi]			
	H19MM-M-1	H19MM-P-1	H19MM-MODULAR-M-1	H19MM-MODULAR-P-1
NET WEIGHT	20	22	18	20
GROSS WEIGHT [kg]	26	28	24	26
DIMENSIONS [mm]	265X523X210		165X280X210	

\* With standard die sets. For specific applications, special die sets are available on request.

\*\* The maximum opening of the machine is the result of the sum of this value and the nominal size number of used master die set.

\*\*\* The maximum working diameter is the result of the sum of this value and the nominal size number of used master die set.

#### SPECIAL DIE SETS FOR AIR CONDITIONING APPLICATIONS

Part Number	Ø Standard size [mm]	Ø Reduced size [mm]
DA10193R6	6	-
DA10193N6R8	6	8
DA10193N8R10	8	10
DA10193N10R12	10	12
DA10193N12R14	12	14

#### SPECIAL DIE SET FOR BRAKE HOSE APPLICATIONS

Part Number	Ø [mm]	L [mm]
DA103125B02	10.5	40

### Die sets- S series

Part Number	Standard	Crimping range [mm]	L [mm]	Ferrule Ømax [mm]
S06		6.0 - 7.9	40	18
S08		8.0 - 9.9	40	20
S10		10.0 - 12.9	40	22
S13		13.0 - 15.9	40	25
S16	X	16.0 - 18.9	40	28
S19	X	19.0 - 21.9	40	31
S22	X	22.0 - 25.9	50	34
S26	X	26.0 - 27.9	50	38
S28	X	28.0 - 33.9	50	40

## Portable swaging machine 100 tons H25MINI

### H25MINI-M-1

Standard version equipped with manual pump and drawer

### H25MINI-P-1

Standard version equipped with air-hydraulic pump and drawer

### H25MINI-MODULAR-M-1

Modular version equipped with disconnectable head and hand pump

### H25MINI-MODULAR-P-1

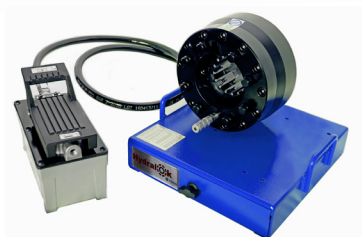
Modular version equipped with disconnectable head and air-hydraulic pump

## Description

Swaging machine with hose capacity up to 1" (4 wire) \*\*\*\*. The standard version is equipped with a sliding drawer to store dies. Lightweight, compact and easy to use, and it is ideal to carry out repairs on site. Available in four different configurations.



H25MINI-M-1



H25MINI-P-1



H25MINI-MODULAR-M-1



H25MINI-MODULAR-P-1

## Product features and specifications

CRIMPING RANGE * [mm/inch]	6-46/0.24-1.81			
MAX CRIMPING FORCE [kN/ton]	1000/100			
HOSE CAPACITY [inch]	3/16"-1" R1AT/1SN/R2AT/2SN (2 wire) – Straight fittings 3/16"-1" R9R/4SP (4 wire) **** – Straight fittings 3/16"-1" 90° fittings, double curve fittings (removing a segment of the set of dies)			
MAX OPENING** [mm]	+24			
MAX WORK OPENING *** [mm]	+12			
CALIBRATION	Dial micrometer			
OPERATION	Twin speed hand pump with integrated relief valve/ air- hydraulic pump [690 bar/10.000 psi]			
	H25MINI-M-1	H25MINI-P-1	H25MINI-MODULAR-M-1	H25MINI-MODULAR-P-1
NET WEIGHT [kg]	38	40	36	40
PESO LORDO [kg]	48	50	46	50
DIMENSIONS [mm]	364X524X312		287X231X274	

\* With standard die sets. For specific applications, special die sets are available on request.

\*\* The maximum opening of the machine is the result of the sum of this value and the nominal size number of used die set.

\*\*\* The maximum working diameter is the result of the sum of this value and the nominal size number of used die set.

\*\*\*\* Flexible hoses 1" (4 wire) can only be crimp with a special die sets A40-65

## Die sets – A series

Part Number	Standard	Crimping range [mm]	L [mm]	Ferrule Max Ø [mm]
A06		6.0 - 7.9	40	18
A08		8.0 - 9.9	40	20
A10		10.0 - 12.9	40	22
A13		13.0 - 15.9	40	25
A16	X	16.0 - 21.9	40	28

Part Number	Standard	Crimping range [mm]	L [mm]	Ferrule Max Ø [mm]
A19		19.0 - 21.9	40	31
A22	X	22.0 - 25.9	50	34
A28	X	28.0 - 33.9	50	40
A34	X	34.0 - 39.9	60	46
A40	X	40.0 - 45.9	60	52

## Manually operated swaging machine 170 tons H25MM

H25MM-M-1

Standard version equipped with manual pump

H25MM-P-1

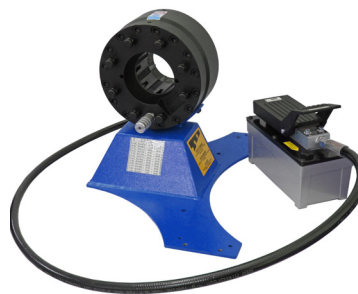
Standard version equipped with air-hydraulic pump

### Description

Swaging machine with hose capacity up to 1 1/4" (2 wire)\*. Ideal for applications where a greater crimping force is required, it is suitable for use on vans and in small workshops. Available in two different configurations.



H25MM-M-1



H25MM-P-1

### Product features and specifications

CRIMPING RANGE* [mm/inch]	6-58/0.24-2.28	
MAX CRIMPING FORCE [kN/ton]	1000/100	
HOSE CAPACITY [inch]	3/16"-1 1/4" R1AT/15N/R2AT/25N (2 wire) 3/16"-1" R9R/45P (4 wire)	
MAX OPENING** [mm]	+31	
MAX WORK OPENING *** [mm]	+12	
CALIBRATION	Dial micrometer	
OPERATION	Twin speed hand pump with integrated relief valve/ air- hydraulic pump [690 bar/10.00psi]	
	H25MM-M-1	H25MM-P-1
NET WEIGHT [kg]	60	62
GROSS WEIGHT [kg]	70	72
DIMENSIONS [mm]	394x788x360	

\* With standard die sets. For specific applications, special die sets are available on request.

\*\* The maximum opening of the machine is the result of the sum of this value and the nominal size number of used master die set.

\*\*\* The maximum working diameter is the result of the sum of this value and the nominal size number of used master die set.

### Die sets – H series

Part Number	Standard	Crimping range [mm]	L [mm]	Ferrule Max Ø [mm]
H06		6.0 - 7.9	40	18
H08		8.0 - 9.9	40	20
H10		10.0 - 12.9	40	22
H13		13.0 - 15.9	40	25
H16	X	16.0 - 21.9	40	28
H19		19.0 - 21.9	40	31
H22	X	22.0 - 27.9	50	34

Part Number	Standard	Crimping range [mm]	L [mm]	Ferrule Max Ø [mm]
H26		26.0 - 29.9	50	38
H28	X	28.0 - 33.9	60	40
H30		30.0 - 33.9	60	42
H34	X	34.0 - 39.9	70	46
H40	X	40.0 - 45.9	70	52
H46		46.0 - 51.9	75	58
H52		52.0 - 57.9	75	64

## Manually operated swaging machine 175 tons H32MM

H32MM-M-1

Standard version equipped with manual pump

H32MM-P-1

Standard version equipped with air-hydraulic pump

### Description

Swaging machine with hose capacity up to 1 1/4" (4 wire). Ideal for applications where a greater crimping force is required. Operated swaging machine with greater capacity. Available in two different configurations.



H32MM-M-1



H32MM-P-1

### Product features and specifications

CRIMPING RANGE* [mm/inch]	6-58/0.24-2.28	
MAX CRIMPING FORCE [kN/ton]	1750/175	
HOSE CAPACITY [inch]	3/16"-1 1/2" R1AT/1SN/R2AT/2SN (2 wire) 3/16"-1 1/4" R9R/4SP (4 wire)	
MAX OPENING** [mm]	+31	
MAX WORK OPENING*** [mm]	+12	
CALIBRATION	Dial micrometer	
OPERATION	Twin speed hand pump with integrated relief valve/ air- hydraulic pump [690 bar/10.00 psi]	
	H32MM-M-1	H32MM-P-1
NET WEIGHT [kg]	75	77
GROSS WEIGHT [kg]	85	87
DIMENSIONS [mm]	413X809X383	

\* With standard die sets. For specific applications, special die sets are available on request.

\*\* The maximum opening of the machine is the result of the sum of this value and the nominal size number of used master die set.

\*\*\* The maximum working diameter is the result of the sum of this value and the nominal size number of used master die set.

### Die sets – H series

Part Number	Standard	Crimping range [mm]	L [mm]	Ferrule Max Ø [mm]
H06		6.0 - 7.9	40	18
H08		8.0 - 9.9	40	20
H10		10.0 - 12.9	40	22
H13		13.0 - 15.9	40	25
H16	x	16.0 - 21.9	40	28
H19		19.0 - 21.9	40	31
H22	x	22.0 - 25.9	50	34

Part Number	Standard	Crimping range [mm]	L [mm]	Ferrule Max Ø [mm]
H26		26.0 - 29.9	50	38
H28	.	28.0 - 33.9	60	40
H30		30.0 - 33.9	60	42
H34	.	34.0 - 39.9	70	46
H40	.	40.0 - 45.9	70	52
H46	.	46.0 - 51.9	75	58
H52	.	52.0 - 57.9	75	64

## Electrically operated swaging machine 175 tons H32ECOSLIM

H32ECOSLIM-QC-1

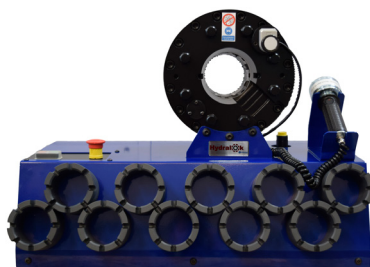
380V 3PH 50 Hz version

H32ECOSLIM-QC-1PH-1

220V 1PH 50 Hz version

### Description

Swaging machine with hose capacity up to 1 1/1" (4 wire). The machine is already equipped with a rack with ten die pots , a buttons control panels and an integrated electric quick-change tool. Available in two different configurations.



H32ECOSLIM-QC-1

### Product features and specifications

CRIMPING RANGE* [mm/inch]	6-58/0.24-2.28
MAX CRIMPING FORCE [kN/ton]	1750/175
HOSE CAPACITY [inch]	3/16"-1 1/2" R1AT/15N/R2AT/25N (2 wire) 3/16"-1 1/4" R9R/45P (4 wire)
MAX OPENING** [mm]	+31
MAX WORK OPENING *** [mm]	+12
CALIBRATION	Dial calibrator
MOTOR [kW]	2.2
	H32ECOSLIM-QC-1 H32ECOSLIM-QC-1PH-1
NET WEIGHT [kg]	124
GROSS WEIGHT [kg]	134
DIMENSIONS [mm]	700x364x520

\* With standard die sets. For specific applications, special die sets are available on request.

\*\* The maximum opening of the machine is the result of the sum of this value and the nominal size number of used master die set.

\*\*\* The maximum working diameter is the result of the sum of this value and the nominal size number of used master die set.

### Die sets – H series

Part Number	Standard	Crimping range [mm]	L [mm]	Ferrule Max Ø (mm)
H06		6.0 - 7.9	40	18
H08		8.0 - 9.9	40	20
H10		10.0 - 12.9	40	22
H13		13.0 - 15.9	40	25
H16	x	16.0 - 21.9	40	28
H19		19.0 - 21.9	40	31
H22	x	22.0 - 27.9	50	34
H26		26.0 - 29.9	50	38
H28	x	28.0 - 33.9	60	40
H30		30.0 - 33.9	60	42
H34	x	34.0 - 39.9	70	46
H40	x	40.0 - 45.9	70	52
H46		46.0 - 51.9	75	58
H52		52.0 - 57.9	75	64

## Electrically operated head swaging machine 175 tons H32

H32MOBILE-12VDC-1/H32MOBILE-24VDC-1

Mobile version 12VDC/24VDC

H32ECO-1/H32ECO-1PH-1

Eco std version 380V 3PH 50Hz/220V 1PH 50Hz

H32ECO-C-1/H32ECO-C-1PH-1

Eco-C version 380V 3PH 50Hz/220V 1PH 50Hz

H32ECOPL-1/H32ECOPL-1PH-1

Eco Premium Line version 380V 3PH

H32HYDRA-1/H32HYDRA-1PH-1

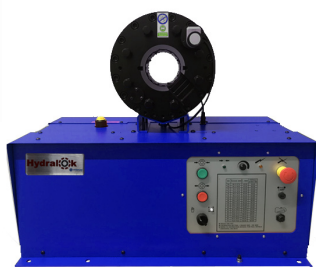
Hydratouch std version 380V 3PH 50Hz/220V 1PH 50Hz

H32HYDRAPL-1/H32HYDRAPL-1PH-1

Hydratouch Premium Line version 380V 3PH 50Hz/220V 1PH 50Hz



H32MOBILE-12VDC-1  
H32MOBILE-24VDC-1



H32ECO-C-1  
H32ECO-C-1PH-1



H32ECOPL-1  
H32ECOPL-1PH-1

### Description

Swaging machine with hose capacity up to 11/4" (4 wire). Available in six different standard configurations as shown above.

### Product features and specifications

CRIMPING RANGE* [mm/inch]	6-58/0.24-2.28					
MAX CRIMPING FORCE [kN/ton]	1750/175					
CAPACITY [inch]	3/16"-1 1/2" R1AT/15N/R2AT/25N (2 wire) 3/16"-1 1/4" R9R/45P (4 wire)					
MAX OPENING** [mm]	+31					
MAX WORK OPENING*** [mm]	+12					
	H32MOBILE-12VDC-1 H32MOBILE-24VDC-1	H32ECO-1 H32ECO-1PH-1	H32ECO-C-1 H32ECO-C-1PH-1	H32ECOPL-1 H32ECOPL-1PH-1	H32HYDRA-1 H32HYDRA-1PH-1	H32HYDRAPL-1 H32HYDRAPL-1PH-1
CALIBRATION	Dial calibrator	Dial calibrator	Dial calibrator	Dial calibrator	Touchscreen	Touchscreen
MOTOR [kW]	1.8	2.2	2.2	2.2	2.2	2.2
NET WEIGHT [kg]	91	124	124		124	
GROSS WEIGHT [kg]	101	134	134		134	
DIMENSIONS [mm]	530x470x475	750x453x630	750x453x630	750x453x630	750x453x630	750x453x630
RACK WITHOUT QUICK CHANGE SYSTEM	/	H32RACK 1 rack 8 die pots				
RACK QUICK CHANGE SYSTEM	H32QCD001	H32QC		H32QC-PL	H32QC	H32QC-PL
QUICK CHANGE TOOL	QCT32-12	QTC32-24				
FOOT PEDAL	/	/	Integrated	Integrated	Optional	Integrated
VIDEO CAMERA	/	/	/	/	123-130	123-130

\* With standard die sets. For specific applications, special die sets are available on request.

\*\* The maximum opening of the machine is the result of the sum of this value and the nominal size number of used master die set

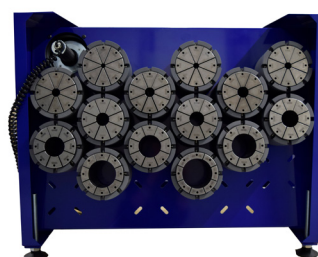
\*\*\* The maximum working diameter is the result of the sum of this value and the nominal size number of used master die set.

## OPTIONAL

### Drawer



### Rack



### Foot Pedal



### Quick change tool



## Die sets – H series

Part Number	Standard	Crimping range [mm]	L [mm]	Ferrule Max Ø (mm)
H06		6.0 - 7.9	40	18
H08		8.0 - 9.9	40	20
H10		10.0 - 12.9	40	22
H13		13.0 - 15.9	40	25
H16	x	16.0 - 21.9	40	28
H19	x	19.0 - 21.9	40	31
H22	x	22.0 - 25.9	50	34
H26	x	26.0 - 29.9	50	38
H28		28.0 - 33.9	60	40
H30	x	30.0 - 33.9	60	42
H34	x	34.0 - 39.9	70	46
H40	x	40.0 - 45.9	70	52
H46	x	46.0 - 51.9	75	58
H52		52.0 - 57.9	75	64

## Electrically operated swaging machine 250 tons H50

H50MOBILE-12VDC-1/H50MOBILE-24VDC-1

Mobile version 12VDC/24VDC

H50ECO-1/H50ECO-1PH-1

Eco std version 380V 3PH 50Hz/220V 1PH 50Hz

H50ECO-C-1/H50ECO-C-1PH-1

Eco-C version 380V 3PH 50Hz/220V 1PH 50Hz

H50ECOPL-1/H50ECOPL-1PH-1

Eco Premium Line version 380V 3PH 50Hz/220V 1PH 50Hz

H50HYDRA-1/H50HYDRA-1PH-1

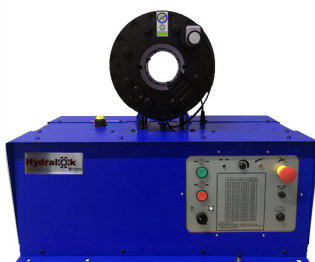
Hydratouch std version 380V 3PH 50Hz/220V 1PH 50Hz

H50HYDRAPL-1/H50HYDRAPL-1PH-1

Hydratouch Premium Line version 380V 3PH 50Hz/220V 1PH 50Hz



H50MOBILE-12VDC-1  
H50MOBILE-24VDC-1



H50ECO-C-1  
H50ECO-C-1PH-1



H50HYDRAPL-1  
H50HYDRAPL-1PH-1

### Description

Swaging machine with hose capacity up to 2" (4 wire). Available in six different standard configurations as shown above.

### Product features and specifications

CRIMPING RANGE* [mm/inch]	6-76/0.24-2.99					
MAX CRIMPING FORCE [kN/ton]	2509/250					
CAPACITY [inch]	3/16"-2" R9R/4SP (4 wire)					
MAX OPENING** [mm]	+35					
MAX WORK OPENING*** [mm]	+12					
	H50MOBILE-12VDC-1 H50MOBILE-24VDC-1	H50ECO-1 H50ECO-1PH-1	H50ECO-C-1 H50ECO-C-PH-1	H50ECOPL-1 H50ECOPL-1PH-1	H50HYDRA-1 H50HYDRA-1PH-1	H50HYDRAPL-1 H50HYDRAPL-1PH-1
CALIBRATION	Dial calibrator	Dial calibrator	Dial calibrator	Dial calibrator	Touchscreen	Touchscreen
MOTOR [kW]	1.8	2.2	2.2	2.2	2.2	2.2
NET WEIGHT [kg]	111	159	159		159	
GROSS WEIGHT [kg]	121	169	169		169	
DIMENSIONS [mm]	530x470x525	750x453x680	750x453x680	750x453x680	750x453x680	750x453x680
RACK WITHOUT QUICK CHANGE SYSTEM	/	H50RACK 1 rack 12 die pots				
DRAWER/RACK WITH QUICK CHANGE SYSTEM	H50QCD001	H50QC		H50QC-PL	H50QC	H50QC-PL
QUICK CHANGE TOOL	QCT50-12	QTC50-24				
FOOT PEDAL	/	/	Integrated	Integrated	123-026	Integrated
VIDEO CAMERA	/	/	/	/	123-130	123-130

\* With standard die sets. For specific applications, special die sets are available on request.

\*\* The maximum opening of the machine is the result of the sum of this value and the nominal size number of used die set.

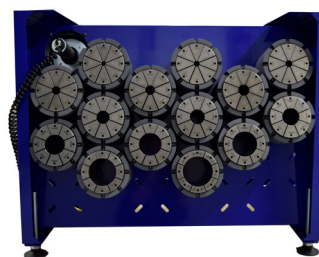
\*\*\* The maximum working diameter is the result of the sum of this value and the nominal size number of used die set.

## OPTIONAL

**Drawer**



**Rack**



**Foot Pedal**



**Quick Change tool**



## Die sets – l series

Part Number	Standard	Crimping range [mm]	L [mm]	Ferrule Max Ø (mm)
L06		6.0 - 7.9	40	18
L08		8.0 - 9.9	40	20
L10		10.0 - 12.9	40	22
L13		13.0 - 15.9	40	25
L16	x	16.0 - 18.9	40	28
L19	x	19.0 - 21.9	40	31
L22	x	22.0 - 25.9	50	34
L26	x	26.0 - 29.9	50	38
L30	x	30.0 - 33.9	60	42
L34	x	34.0 - 39.9	70	46
L40	x	40.0 - 45.9	70	52
L46	x	46.0 - 51.9	80	58
L52	x	52.0 - 57.9	80	64
L58	x	58.0 - 63.9	80	70
L64	x	64.0 - 69.9	80	76
L70		70.0 - 76.0	95	82

## Electrically swaging machine 319 tons H50-46

H50-46MOBILE-12VDC-1/H50-46MOBILE-24VDC-1

Mobile version 12VDC/24VDC

H50-46ECO-1/H50-46ECO-1PH-1

Eco std version 380V 3PH 50Hz/220V 1PH 50Hz

H50-46ECO-C-1/H50-46ECO-C-1PH-1

Eco-C version 380V 3PH 50Hz/220V 1PH 50Hz

H50-46ECOPL-1/H50-46ECOPL-1PH-1

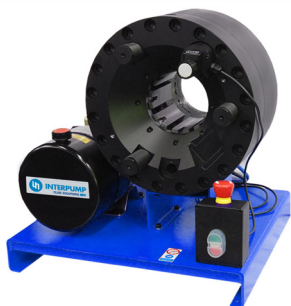
Eco Premium Line version 380V 3PH 50Hz/220V 1PH 50Hz

H50-46HYDRA-1/H50-46HYDRA-1PH-1

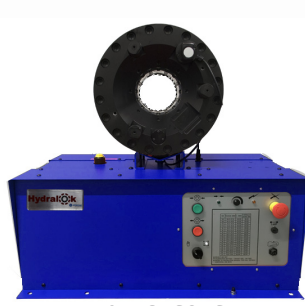
Hydratouch std version 380V 3PH 50Hz/220V 1PH 50Hz

H50-46HYDRAPL-1/H50-46HYDRAPL-1PH-1

Hydratouch Premium Line version 380V 3PH 50Hz/220V 1PH 50Hz



H50-46MOBILE-12VDC-1  
H50-46MOBILE-24VDC-1



H50-46ECO-C-1  
H50-46CO-C-1PH-1



H50-46HYDRAPL-1  
H50-46HYDRAPL-1PH-1

### Description

Swaging machine with hose capacity up to 2" (6 wire). Available in six different standard configurations as shown above.

### Product features and specifications

CRIMPING RANGE* [mm/inch]	6-76/0.24-2.99					
MAX CRIMPING FORCE [kN/ton]	3195/319					
CAPACITY [inch]	3/16"-2" R9R/4SP (4 wire) 3/16"-1 1/2" R13/4SH (6 wire)					
MAX OPENING** [mm]	+25					
MAX WORK OPENING*** [mm]	+12					
	H50-46MOBILE-12VDC-1 H50-46MOBILE-24VDC-1	H50-46ECO-1 H50-46ECO-1PH-1	H50E-46ECO-C-1 H50E-46ECO-C-1PH-1	H50-46ECOPL-1 H50-46ECOPL-1PH-1	H50-46HYDRA-1 H50-46HYDRA-1PH-1	H50-46HYDRAPL-1 H50-46HYDRAPL-1PH-1
CALIBRATION	Dial calibrator	Dial calibrator	Dial calibrator	Dial calibrator	Touchscreen	Touchscreen
MOTOR [kW]	1.8	2.2	2.2	2.2	2.2	2.2
NET WEIGHT [kg]	146	194	194		194	
GROSS WEIGHT [kg]	156	204	204		204	
DIMENSIONS [mm]	530x470x560	750x453x716	750x453x716	750x453x716	750x453x716	750x453x716
RACK WITHOUT QUICK CHANGE SYSTEM	/	H50-46RACK 1 rack 18 pots die				
RACK QUICK CHANGE SYSTEM	H50-46QCD001	H50-46QC		H50-46QC-PL	H50-46QC	H50-46QC-PL
QUICK CHANGE TOOL	QCT46-12	QTC50-46QC				
FOOT PEDAL	/	/	Integrated	Integrated	123-026	Integrated
VIDEO CAMERA	/	/	/	/	123-130	123-130

\* With standard die sets. For specific applications, special die sets are available on request.

\*\* The maximum opening of the machine is the result of the sum of this value and the nominal size number of used master die set.

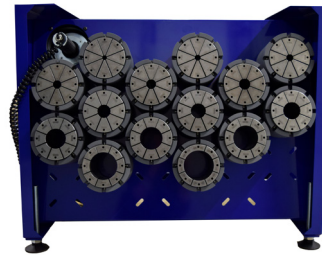
\*\*\* The maximum working diameter is the result of the sum of this value and the nominal size number of used master die set.

## OPTIONAL

**Drawer**



**Rack**



**Foot Pedal**



**Quick change tool**



## Die sets – M series

Part Number	Standard	Crimping range [mm]	L [mm]	Ferrule Max Ø (mm)
M06		6.0 - 7.9	40	18
M08		8.0 - 9.9	40	20
M10		10.0 - 12.9	40	22
M13		13.0 - 15.9	40	25
M16	x	16.0 - 18.9	40	28
M19	x	19.0 - 21.9	40	31
M22	x	22.0 - 25.9	50	34
M26	x	26.0 - 29.9	50	38
M30	x	30.0 - 33.9	60	42
M34	x	34.0 - 39.9	70	46
M40	x	40.0 - 45.9	85	52
M46	x	46.0 - 51.9	90	58
M52	x	52.0 - 57.9	100	64
M58	x	58.0 - 63.9	105	70
M64	x	64.0 - 69.9	110	76
M70	x	70.0 - 75.9	110	82

## Electrically swaging machine 450 tons H50-6

H50-6ECO-1/H50-6ECO-1PH-1

H50-6ECO-C-1/H50-6ECO-C-1PH-1

H50-6ECOPL-1/H50-6ECOPL-1PH-1

H50-6HYDRA-1/H50-6HYDRA-1PH-1

H50-6HYDRAPL-1/H50-6HYDRAPL-1PH-1

Eco version 380V 3PH 50Hz/220V 1PH 50Hz

Eco-C version 380V 3PH 50Hz/220V 1PH 50Hz

Eco Premium Line version 380V 3PH 50Hz/220V 1PH 50Hz

Hydratouch version 380V 3PH 50Hz/220V 1PH 50Hz

Hydratouch Premium Line version 380V 3PH 50Hz/220V 1PH 50Hz



H50-6ECO-1  
H50-6ECO-1PH-1



H50-6ECOPL-1  
H50-6ECOPL-1PH-1



H50-6HYDRAPL-1  
H50-6HYDRAPL-1PH-1

### Description

Swaging machine with hose capacity up to 2" (6 wire). Available in five different standard configurations as shown above.

### Product features and specifications

CRIMPING RANGE* [mm/inch]	6-82/0.24-3.23				
MAX CRIMPING FORCE [kN/ton]	4500/450				
CAPACITY [inch]	3/16"-2" R13/45H (6 wire)				
MAX OPENING** [mm]	+47				
MAX WORK OPENING*** [mm]	+12				
	H50-6ECO-1 H50-6ECO-1PH-1	H50E-6CO-C-1 H50E-6CO-C-PH-1	H50-6ECOPL-1 H50-6ECOPL-1PH-1	H50-6HYDRA-1 H50-6HYDRA-1PH-1	H50-6HYDRAPL-1 H50-6HYDRAPL-1PH-1
CALIBRATION	Dial calibrator	Dial calibrator	Dial calibrator	Touchscreen	Touchscreen
MOTOR [kW]	2.2	2.2	2.2	2.2	2.2
NET WEIGHT [kg]	245	245		245	
GROSS WEIGHT [kg]	255	255		255	
DIMENSIONS [mm]	750x453x795	750x453x795	750x453x795	750x453x795	750x453x795
RACK WITHOUT QUICK CHANGE SYSTEM	H50-6RACK 1 Rack 18 pots die				
RACK QUICK CHANGE SYSTEM	H50-6QCD001	H50-6QC	H50-6QC-PL	H50-6QC	H50-6QC-PL
QUICK CHANGE TOOL	QTC46-24				
FOOT PEDAL	/	Integrated	Integrated	123-026	Integrated
VIDEO CAMERA	/	/	/	123-130	123-130

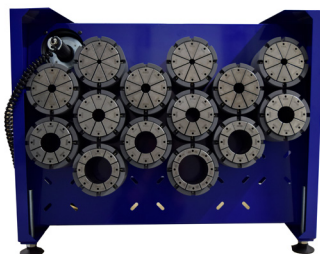
\* With standard die sets. For specific applications, special die sets are available on request.

\*\* The maximum opening of the machine is the result of the sum of this value and the nominal size number of used master die set.

\*\*\* The maximum working diameter is the result of the sum of this value and the nominal size number of used master die set.

## OPTIONAL

### Rack



### Foot Pedal



### Quick change tool



## Die sets – M series

Part Number	Standard	Crimping range [mm]	L [mm]	Ferrule Max Ø (mm)
M06		6.0 - 7.9	40	18
M08		8.0 - 9.9	40	20
M10		10.0 - 12.9	40	22
M13		13.0 - 15.9	40	25
M16	x	16.0 - 18.9	40	28
M19	x	19.0 - 21.9	40	31
M22	x	22.0 - 25.9	50	34
M26	x	26.0 - 29.9	50	38
M30	x	30.0 - 33.9	60	42
M34	x	34.0 - 39.9	70	46
M40	x	40.0 - 45.9	85	52
M46	x	46.0 - 51.9	90	58
M52	x	52.0 - 57.9	100	64
M58	x	58.0 - 63.9	105	70
M64	x	64.0 - 69.9	110	76
M70	x	70.0 - 75.9	110	82
M76	x	76.0 - 81.9	120	86

# Electrically swaging machine 2.25 tons BH1000-1

BH1000-1

Standard version 220v 1 ph 50 Hz

## Description

Swaging machine with a brake hose capacity from 7.5 to 10 mm. The machine is compact and lightweight and it is designed for crimping brake hoses and air conditioning hoses. Available in standard configuration with double foot pedals.



BH1000-1

## Product features and specifications

CRIMPING RANGE [mm/inch]	7.5-10/0.29-0.39
MAX CRIMPING FORCE [kN/ton]	22.5/2.25
CALIBRATION	Pressure Regulator
MOTOR [kW]	0.5
Max opening [mm]	+13
MAX WORK OPENING*** [mm]	+12
Operated	Electropump [172 bar/2.500 psi]
NET WEIGHT [kg]	29
GROSS WEIGHT [kg]	35
DIMENSIONS [mm]	550X300X400

\* With standard die sets . For specific applications, special die sets are available on request.

\*\* The maximum opening of the machine is the result of the sum of this value and the nominal size number of used master die set. Valid only for S series die set.

\*\*\* The maximum working diameter is the result of the sum of this value and the nominal size number of used master die set. Valid only for S series die set.

## Die sets – S series

Part Number	Standard	Crimping range [mm]	L [mm]	Ferrule Max Ø (mm)
S06		6.0 - 7.9	40	18
S08		8.0 - 9.9	40	20
S10		10.0 - 12.9	40	22
S13		13.0 - 15.9	40	25
S16	x	16.0 - 18.9	40	28
S19	x	19.0 - 21.9	40	31
S22	x	22.0 - 25.9	50	34
S26	x	26.0 - 27.9	50	38
S28	x	28.0 - 33.9	50	40

### SPECIAL DIE SETS FOR AIR CONDITIONING APPLICATIONS

Part Number	Ø Standard [mm]	Ø Reduced [mm]
DA10193R6	6	-
DA10193N6R8	6	8
DA10193N8R10	8	10
DA10193N10R12	10	12
DA10193N12R14	12	14

### SPECIAL DIE SET FOR BRAKE HOSE APPLICATIONS

Part Number	Ø	L [mm]
DA10312SB02	10.5	40

## Bench mounted electric hose cutting machine HCL-1PH / HCL-3PH

HCL-1PH / HCL-3PH

220V 1PH 50 Hz Version/ 380V 3PH 50 Hz Version

### Description

Hose cutting machine with hose capacity up to 1 1/4" (4 wire). The machine is practical and compact and it is ideal for workshop set-up. Available in two different electrical configurations. In the standard configuration, it is equipped with a slotted blade and it is designed to be fitted with an external suction unit for fume extraction.



HCL-1PH

### Product features and specifications

CUTTING RANGE [mm/inch]	3/16"-2" R1AT/15N/R2AT/25N (2 wire) 3/16"-1 1/4" R9R/4SP (4 wire)
MOTOR [kW]	2.2
Rotational speed [rpm]	1420
STANDARD SLOTTED BLADE SIZE [mm]	Ø250x3
EXTRACTION PORT SIZE [mm]	Ø51
NET WEIGHT [kg]	42
GROSS WEIGHT [kg]	52
DIMENSIONS [mm]	405x385x435

### BLADE CHART

Part Number	Dimensions	Model
CHBL25032SD	Ø250x3x25	Slotted
CHBL2502.525	Ø250x2.5x25	Smooth

## Mobile hose cutting machine HCLMOBILE-12VDC / HCLMOBILE-24VDC

HCLMOBILE-12VDC / HCLMOBILE-24VDC

12VDC or 24VDC Version

### Description

Mobile electric hose cutting machine with hose capacity up to 1 1/4" (4 wire). The machine is compact and lightweight, it is suitable for use on vans and in workshop. The drive lever allows to carry out precise cuts minimizing the efforts. In the standard configuration, it is equipped with a slotted blade and it is designed to be connected with an external fume suction unit.



HCLMOBILE-12VDC/HCLMOBILE-24VDC

### Product features and specifications

CUTTING RANGE [inch]	3/16"-1 1/2" R1AT/1SN/R2AT/2SN (2 wire) 3/16"-1 1/4" R9R/4SP (4 wire)
MOTOR [kW]	1.8
STANDARD SLOTTED BLADE SIZE [mm]	Ø250x3
EXTRACTION PORT SIZE [mm]	Ø51
NET WEIGHT [kg]	23
GROSS WEIGHT [kg]	29
SMOOTH BLADE PART NUMBER	CHBL2502.540
DIMENSIONS [mm]	Ø 250x3

### BLADE CHART

Part Number	Dimensions	Model
CHBL2502.540	Ø 250x32.5	Smooth
CHBL250340D	Ø250x3	Slotted

## Floor mounted electric hose cutting machine CH75

CH75	Floor mounted cutting machine 380V 3ph 50Hz, fino 1 1/4" (6 wire), 1 1/4" (4 wire) 2" (2 wire), 2" (industrial hoses), blade not included
CH75-D	Floor mounted cutting machine 380V 3ph 50Hz, fino 1 1/4" (6 wire), 1 1/4" (4 wire) 2" (2 wire), 2" (industrial hoses), std. slotted blade included
CH75-L	Floor mounted cutting machine 380V 3ph 50Hz, fino 1 1/4" (6 wire), 1 1/4" (4 wire) 2" (2 wire), 2" (industrial hoses), std. smooth blade included

### Description

The CH75 is an extremely resistant cutting machine for flexible hoses up to 2" (2 and 4 wire) and 1 1/4" (6 wire), also suitable for industrial use. Practical and simple to use, it lets to save time and money. Below there are blade part numbers available to be ordered separately.



CH75

### Product features and specifications

HOSE TYPE	Ø
6 wire	1 1/4"
4 wire	2"
2 wire	2"
INDUSTRIAL HOSE	2"
Ø OUTSIDE DIAMETER	75 mm

MOTOR POWER [kW]	4.0
POWER SUPPLY [V]	230/400V 50Hz
WEIGHT [kg]	130
DIMENSIONS [mm]	800x550x1150

#### COMPATIBLE BLADES (not included)

Part Number	Dimensions [mm]	Model
CHBL300332	300X3X32	Smooth
CHBL300332D	300X3X32	Slotted

## Floor mounted electric hose cutting machine HCC3-3PH

HCC3-3PH

380V 3PH 50 Hz Version

### Description

Floor mounted cutting machine for flexible hoses up to 1.1/2" (6 spiral). The machine is the most performing among the available cutters; it allows easy cutting with pneumo servo-assisted foot pedal. For which compressed air supply at 8 bar is required. In standard configuration, it is equipped with a slotted blade and it is designed to be connected with an external fume suction unit.



HCC3-3PH

### Product features and specifications

CUTTING RANGE [inch]	3/16" - 2" R1AT/1SN/R2AT/2SN (2 wire) 3/16" - 1 1/2" R13-R15/4SH (6 spiral)
MOTOR [kW]	5.5
ROTATIONAL SPEED [rpm]	2900
ELECTRICAL SETUP	400 3PH 50Hz
SLOTTED BLADE DIMENSIONS [mm]	Ø350
EXTRACTION PORT SIZE [mm]	Ø100
NET WEIGHT [kg]	160
DIMENSIONS LxWxH [mm]	1013x520x1135

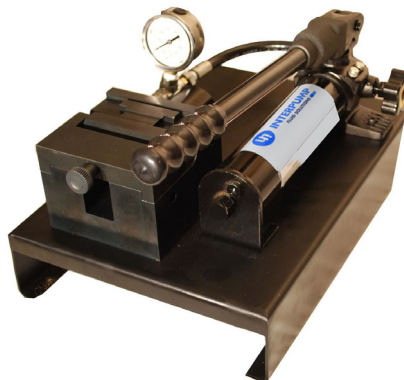
#### BLADES FOR CUTTING MACHINES

Part Number	Dimensions	Model
CHBL350340D	350x3x40	Slotted
CHBL350340	350x3x40	Smooth

## Flaring machine HF1-1

### Description

Manually operated portable flaring machine for 37° flares on rigid tubes up to 1" (25mm), Compact and lightweight, it is suitable for use in workshops or on site.



HF1-1

### Product features and specifications

TUBE CAPACITY [mm/inch]	6 - 25/1/4" - 1"
CALIBRATION	Bourdon pressure gauge
OPERATION	twin speed hand pump with integrated relief valve [690 bar/10.000 psi]
NET WEIGHT [kg]	23
GROSS WEIGHT [kg]	29
DIMENSIONS [mm]	419x280x250

### Metric flaring dies

Part Number	Die size
PF1-DIES-06M	Flaring die 6mm
PF1-DIES-08M	Flaring die 8mm
PF1-DIES-10M	Flaring die 10mm
PF1-DIES-12M	Flaring die 12mm
PF1-DIES-14M	Flaring die 14mm
PF1-DIES-15M	Flaring die 15mm
PF1-DIES-16M	Flaring die 16mm
PF1-DIES-18M	Flaring die 18mm
PF1-DIES-20M	Flaring die 20mm
PF1-DIES-22M	Flaring die 22mm
PF1-DIES-25M	Flaring die 25mm

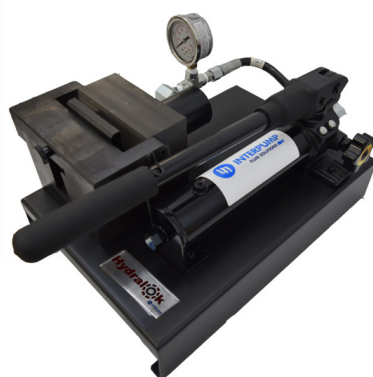
### Imperial flaring dies

Part Number	Die size
PF1-DIES-04I	Flaring die 1/4"
PF1-DIES-05I	Flaring die 5/16"
PF1-DIES-06I	Flaring die 3/8"
PF1-DIES-08I	Flaring die 1/2"
PF1-DIES-10I	Flaring die 5/8"
PF1-DIES-12I	Flaring die 3/4"
PF1-DIES-14I	Flaring die 7/8"
PF1-DIES-16I	Flaring die 1"

## Flaring machine HF3-1

### Description

Manually operated portable flaring machine for 37° flares on rigid tube up to 1 1/2". Compact and lightweight, it is suitable for use in workshops or on site.



HF3-1

### Product features and specifications

FLARING CAPACITY [mm/inch]	6 - 42/1/4" - 1 1/2"
CALIBRATION	Bourdon pressure gauge
OPERATION	twin speed hand pump with integrated relief valve [690 bar/10.000 psi]
NET WEIGHT [kg]	30
GROSS WEIGHT [kg]	36
DIMENSIONS [mm]	419x280x250

### Metric flaring die

Part Number	Die size
PF1-DIES-06M	Flaring die 6mm
PF1-DIES-08M	Flaring die 8mm
PF1-DIES-10M	Flaring die 10mm
PF1-DIES-12M	Flaring die 12mm
PF1-DIES-14M	Flaring die 14mm
PF1-DIES-15M	Flaring die 15mm
PF1-DIES-16M	Flaring die 16mm
PF1-DIES-18M	Flaring die 18mm
PF1-DIES-20M	Flaring die 20mm
PF1-DIES-22M	Flaring die 22mm
PF1-DIES-25M	Flaring die 25mm
PF3-DIES-28M	Flaring die 28mm
PF3-DIES-30M	Flaring die 30mm
PF3-DIES-35M	Flaring die 35mm
PF3-DIES-38M	Flaring die 38mm

### Imperial flaring die

Part Number	Die size
PF1-DIES-04I	Flaring die 1/4"
PF1-DIES-05I	Flaring die 5/16"
PF1-DIES-06I	Flaring die 3/8"
PF1-DIES-08I	Flaring die 1/2"
PF1-DIES-10I	Flaring die 5/8"
PF1-DIES-12I	Flaring die 3/4"
PF1-DIES-14I	Flaring die 7/8"
PF1-DIES-16I	Flaring die 1"
PF3-DIES-20I	Flaring die 1 1/4"
PF3-DIES-24I	Flaring die 1 1/2"

## Description

Bench mounted electrical skiving machine. Internal/external centrifugal hose skiving capacity up to 1 1/4". Compact and lightweight it is ideal for workshop or to be equipped on vans. Its innovative technology makes it possible to achieve perfect skiving of hoses through few and easy steps.



HSE12V

## Product features and specifications

EXTERNAL SKIVING CAPACITY [inch]	1/4" - 1 1/4"
INTERNAL SKIVING CAPACITY [inch]	5/8" - 1 1/4"
BLADE MATERIAL	HSS
NET WEIGHT [Kg]	20
GROSS WEIGHT [Kg]	26

### External skiving

Part Number	Size
HSE12V-PE04	External skiving kit 1/4"
HSE12V-PE05	External skiving kit 5/16"
HSE12V-PE06	External skiving kit 3/8"
HSE12V-PE08	External skiving kit 1/2"
HSE12V-PE10	External skiving kit 5/8"
HSE12V-PE12	External skiving kit 3/4"
HSE12V-PE16	External skiving kit 1"
HSE12V-PE20	External skiving kit 1 1/4"

### Internal skiving

Part Number	Size
HSE12V-PI20	Internal skiving kit 1 1/4"

Other sizes available on request

## Hand Skiver HS1

### Description

Internal/external hose skiving capacity up to 2". Easy to use and lightweight, it is suitable for workshop or on-site applications.



HS1

### Product features and specifications

EXTERNAL SKIVING CAPACITY [inch]	1/4" - 2"
INTERNAL SKIVING CAPACITY [inch]	5/8" - 2"
BLADE MATERIAL	HSS
NET WEIGHT [kg]	8
GROSS WEIGHT [kg]	14
DIMENSION [mm]	520x65x220

### External skiving

Part Number	MANDREL SIZE
HS1-PE04	1/4"
HS1-PE06	3/8"
HS1-PE08	1/2"
HS1-PE10	5/8"
HS1-PE12	3/4"
HS1-PE16	1"
HS1-PE20	1 1/4"
HS1-PE24	1 1/2"
HS1-PE32	2"
HS1-PEK32	1/4" - 2" (KIT N.9 pcs)

### Internal skiving

Part Number	MANDREL SIZE
HS1-PI08	1/2"
HS1-PI10	5/8"
HS1-PI12	3/4"
HS1-PI16	1"
HS1-PI20	1 1/4"
HS1-PI24	1 1/2"
HS1-PI32	2"
HS1-PIK32	1/2"-2" (KIT N.7 PZ.)

## Manually operated vertical swaging machine including oil distributor with lever PRT34

**CCM/334-0ET** Swaging machine PRT34/ET with manual distributor and power pack 380V 3PH 50Hz, incl. n. 4 set of dies std

**CCM/334-0EM** Swaging machine PRT34/EM with manual distributor and power pack 220V 1PH 50Hz, incl. n. 4 set of dies std

### Description

The PRT34 is the ideal machine for connecting oleo-dynamic hoses up to 3/4". It comes with standard equipment of 4 series of dies from 1/4 " to 3/4 "



### Product features and specifications

CAPACITY [inch ]	3/4"
SETTING	Direct Manual adjustment with micrometer
OLEO DINAMIC ELECTRIC CONTROL UNIT	2.2 kW 380V 50Hz 3ph 2.2 kW 220V 50Hz 1ph
PACKAGING DIMENSION [mm]	1200 x 600 x 800 (with electric contr. unit)
NET WEIGHT [kg]	487

### Dies - Standard series

Part Number	Standard]	Ø [mm]
CCA/334-007		7
CCA/334-008		8
CCA/334-009		9
CCA/334-010		10
CCA/334-013		13
CCA/334-016	x	16

Part Number	Standard]	Ø [mm]
CCA/334-019	x	19
CCA/334-023	x	23
CCA/334-026		26
CCA/334-029	x	29
CCA/334-030		30

### Dies for brake hoses

Part Number	Ø [mm]
CCA/334-00F	10.5

### Dies for air-conditioning

Part Number	Ø [mm]
CCA/334-C15	15
CCA/334-C19	19
CCA/334-C21	21
CCA/334-C25	25

## Manually operated vertical swaging machine including oil distributor with lever PRT40

CCM/340-000-1	Swaging machine PRT40 with manual distributor
CCM/340-000	Swaging machine PRT40 with manual distributor, incl. n.5 set of dies std
CCM/340-0ET	Swaging machine PRT40/ET with manual distributor and hydraulic power pack 380V 3PH 50Hz, incl. n. 5 set of dies std
CCM/340-0TC	Swaging machine PRT40/TC with manual distributor and hydraulic power pack 380V 3PH 50Hz and dispenser, incl. n. 5 set of dies std
CCM/340-0EM	Swaging machine PRT40/EM with manual distributor and hydraulic power pack 220V 1PH 50Hz, incl. n. 5 set of dies std
CCM/340-0MC	Swaging machine PRT40/EMC with manual distributor and hydraulic power pack 220V 1PH 50Hz, dispenser incl. n. 5 set of dies std

### Description

The PRT40 is the ideal machine for connecting oleo-dynamic hoses up to 1". It comes with standard equipment of 5 series of dies from ¼ " to 1".



### Product features and specifications

CAPACITY [inch]	1" R9R
SETTINGS	Direct Manual adjustment with micrometer
OLEO DYNAMIC ELECTRIC CONTROL UNIT **	2.2 kW 380V 50Hz 3ph 2.2 kW 220V 50Hz 1ph
PACKAGING DIMENSIONS [mm]	800x 600 x 600(without power pack) 1200 x 600x 800mm (with power pack)
NET WEIGHT * [kg]	75

\* Referred to CCM/340-000-1.

\*\* Operated with hydraulic hydraulic power pack (optional three phase or single phase).

### Dies - standard series

Part Number	Standard	Ø [mm]
CCA/345-007		7
CCA/345-009		9
CCA/345-010		10
CCA/345-510		10 (special brake hoses)
CCA/345-012		12
CCA/345-013		13
CCA/345-015		15

Part Number	Standard	Ø [mm]
CCA/345-S15		15 (special)
CCA/345-016	x	16
CCA/345-019	x	19
CCA/345-023	x	23
CCA/345-029	x	29
CCA/345-036	x	36

### Dies for brake hoses

Part Number	Ø [mm]
CCA/345-00F	10.5

### Dies for air-conditioning

Part Number	Ø [mm]
CCA/345-C15	15
CCA/345-C19	19
CCA/345-C21	21
CCA/345-C25	25

## Manually operated vertical swaging machine including oil distributor with lever PRT80

<b>CCM/380-000-1</b>	Swaging machine PRT80 with manual distributor
<b>CCM/380-000</b>	Swaging machine PRT80 with manual distributor, incl. n.7 set of dies std
<b>CCM/380-0ET</b>	Swaging machine PRT80/ET with manual distributor and hydraulic power pack 380V 3PH 50Hz, incl. n. 7 set of dies std
<b>CCM/380-0TC</b>	Swaging machine PRT80/ETC with manual distributor and hydraulic power pack 380V 3PH 50Hz and dispenser, incl. n. 7 set of dies std
<b>CMM/380-0EM</b>	Swaging machine PRT80/EM with manual distributor and hydraulic power pack 220V 1PH 50Hz, incl. n. 7 set of dies std
<b>CMM/380-0MC</b>	Swaging machine PRT80/MC with manual distributor and hydraulic power pack 220V 1PH 50Hz, dispenser incl. n. 7 set of dies std

### Description

The PRT80 is the ideal machine for connecting oleo-dynamic hoses up to 1 1/2". It comes with standard equipment of 7 series of dies from 1/4 " to 1 1/2".



### Product features and specifications

CAPACITY [inch]	1 1/2" R9R.
SETTING	Direct Manual adjustment with micrometer
OLEO DYNAMIC ELECTRIC CONTROL UNIT**	2.2 kW 380V 50Hz 3ph 2.2 kW 220V 50Hz 1ph
PACKAGING DIMENSIONS [mm]	800x 600x 600(without power pack ) 1200 x 600 x 800 (with power pack)
NET WEIGHT * [kg]	132

\* Referred to CCM/380-000-1.

\*\* Operated with hydraulic hydraulic power pack (optional three phase or single phase).

### Dies - Standard series

Part Number	Standard]	Ø [mm]
CCA/389-007		7
CCA/389-009		9
CCA/389-010		10
CCA/389-013		13
CCA/389-014		14
CCA/389-016	x	16

Part Number	Standard]	Ø [mm]
CCA/389-019	x	19
CCA/389-023	x	23
CCA/389-030	x	30
CCA/389-038	x	38
CCA/389-045	x	45
CCA/389-052	x	52

### Dies for brake hoses

Part Number	Ø [mm]
CCA/389-00F	10.5

### Dies for air-conditioning

Part Number	Ø [mm]
CCA/389-C15	15
CCA/389-C19	19
CCA/389-C21	21
CCA/389-C25	25

## Vertical swaging machine PR32

CCM/332-000

Hand lever operated crimping machine PR32, suited for light aluminum and printed steel ferrules with n.2 die sets Ø12mm (standard and reduced sizes) included

### Description

Hand lever operated swaging machine for lightweight aluminum ferrules and moulded steel ferrules.



### Product features and specifications

CRIMPING RANGE [mm]	12-36
MAX CRIMPING FORCE [kN/ton]	44
WEIGHT [kg]	20
DIMENSIONS [mm]	240x110x345

### Dies chart

Part Number	Ø Standard size [mm]	Ø Reduced size [mm]
CCA/332-06R		6
CCA/332-012	12	-
CCA/332-12R	-	12
CCA/332-014	14	-
CCA/332-016	16	-
CCA/332-017	17.5	

## Bench mounted electrical skiving machine SPT20

CCM/420-0EI

Skiving machine SPT20/EI, int. 1/2" – 2", ext. 1/4" – 2" includes n.1 cutting tool (ext.)  
and n.10 mandrel (ext.)

### Description

The SPT20 is the ideal machine to perform internal and external skiving of hydraulic hoses up to 2". It is available in different configurations and it comes with a standard equipment of 10 mandrel, foot pedal, protection grid and support bench.



### Product features and specifications

INT. SKIVING CAPACITY [inch]	1/2" – 2"
EXT. SKIVING CAPACITY [inch]	1/4" – 2"
SETTING	Pedal button
MOTOR	0,18 Kw 380 V 50Hz 3ph
PACKED DIMENSION [mm]	800 x 600x 800
NET WEIGHT [Kg]	70

### External skiving

Part Number	Ø [mm]
*CCR/420-E05	3/16"
CCR/420-E06	1/4"
CCR/420-E08	5/16"
CCR/420-E10	3/8"
CCR/420-E13	1/2"
CCR/420-E16	5/8"
CCR/420-E19	3/4"
CCR/420-E25	1"
CCR/420-E32	1 1/4"
CCR/420-E38	1 1/2"
CCR/420-E50	2"

\*Optional

### Internal skiving

Part Number	Ø [mm]
HS1-PI08	1/2"
HS1-PI10	5/8"
HS1-PI12	3/4"
HS1-PI16	1"
HS1-PI20	1 1/4"
HS1-PI24	1 1/2"
HS1-PI32	2"

## Hose reel truck SR1P

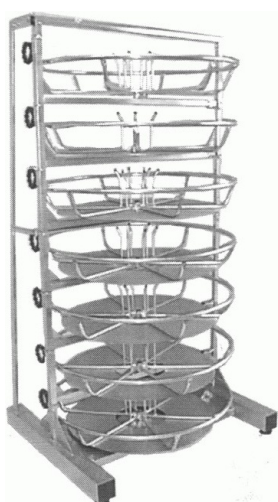


### Product features and specifications

MATERIAL	Steel
SURFACE TREATMENT	Painted
DIMENSIONS LxPxH [mm]	1000x1000x2000
NOTE	2 steering wheels 2 fixed wheels 2 shelves rests fittings

## SR07 - Seven slots hose reel

### Product features and specifications



MATERIAL	Steel
SURFACE TREATMENT	Zinc plated
WEIGHT [kg]	160
DIMENSIONS LxPxH [mm]	1250 x 1050 x 2200
MAX COIL NUMBER	7
MAX COIL WEIGHT [kg]	80
MIN INT. COIL Ø [mm]	300
MAX EXT COIL Ø [mm]	850
MAX COIL HEIGHT [mm]	200
NOTE	Single rotating hose reel Rack is zinc plated, not painted

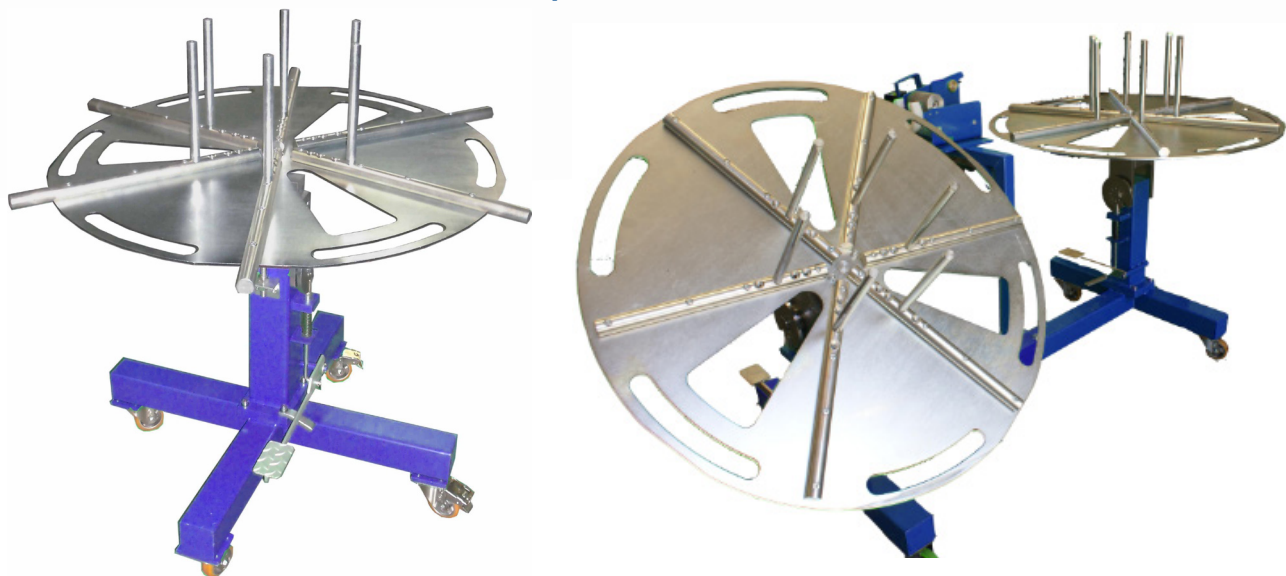
COILS MAX length (25N HOSE) SIZE	MT
05	260
06	200
08	180
10	140
12	120
16	95
20	80
25	55

## One/two disk manual hose coiler SR

### Description

Trolley to facilitate the operations of manual winding and unwinding coils of hydraulic hoses. It is available in both single and double versions. It is possible to adjust the internal diameter of the skeins in the following size: 200 mm, 250 mm, 325 mm and 400 mm. By tilting the plane it is possible to lock it in the more convenient position in order to make easy the coils loading and unloading operations. The rotating plates are equipped with an adjustable brake system to provide more or less resistance to the rotary movement and are also equipped with shaped slots arranged at 120° to facilitate the binding of the coils.

### SR1R/SR2R- hose coiler



### Product features and specifications

PART NUMBER	SR1R	SR2R
N° OF DISKS	1	2
DIAMETER [mm]	1000 Ø	
DIMENSIONS V	1100X1000X1000	2276X1000X1000
WEIGHT [Kg]	90	180
MAX LOAD ON SINGLE DISK [Kg]	250	
N° OF ROATING DISK	2	
INTERNAL COILING DIAMETER mm	FROM 200 TO 400	

### OPTIONAL

Counter meter up to for 2" hoses (cod. CHC2) with support (cod. SRSCM-S)

## Two disk motorizes hose coiler SR2R1M

### Description

Motorized hose reel with double disk allow simplifying the operations of coiling and uncoiling of hydraulic hoses. It is possible to adjust the internal diameter of the skeins in the following size: 200 mm, 250 mm, 325 mm and 400 mm. The motorized version has only one rotating plane connected to a motor to make easy the step of unwinding or winding. It is operated by a foot pedal with the emergency button incorporated. By tilting the plane it is possible to lock it in the best position in order to make easy the loading and unloading of the coils. The rotating planes are equipped with an adjustable pre-load to provide more or less resistance to the rotary movement and are also equipped with shaped slits arranged at 120° to facilitate the binding of the skeins. The meter counter is available as an optional in double winders version and its position is adjustable according to the diameter of the tube to be rolled up. The structure has a large load capacity and stability. In this version it is possible to mount a bench mounted hose cutting machine between the two rotating planes.



### Product features and specifications

PART NUMBER	SR2R1M
N° OF DISKS	2
DIAMETER [mm]	1000 Ø
DIMENSIONS [mm]	2276X1000X1000
WEIGHT [kg]	230
MAX LOAD ON EACH DISCS [kg]	250
N° OF DISKS ROATING	1 motorized 1 conducted
INTERNAL COILING DIAMENTER [mm]	FROM 200 TO 400
MOTOR	0.35 kW 230/400 V - 50Hz

### OPTIONAL

Meter counter for 2" diameter hoses (cod. CHC2) with support (cod. SRSCM-S)

## Counter Meter CHC2

### Description

Instrument for measuring hose length up to 2" , it is ideal hoses for coiling/uncoiling and cutting workstation. It can also be mounted on hose cutting machine without its base. The base can be fixed to the floor and the height can be adjusted for better ergonomics.



### Product features and specifications

MAX MEASURABLE length [m]	9999.99
MAX HOSE SPEED [m/min]	200
HOSE DIAMETER	3/16" a 2"
WEIGHT CHC2 [kg]	6
WEIGHT CHBC [kg]	7

### OPTIONAL

Base (code CHBC)

## For heat-shrink caps Oven HSMA2/HSMB1



### Product features and specifications

PART NUMBER	HSMA2	HSMB1
DESCRIPTION	manual, with support	Bench mounted
WEIGHT [kg]	2	3
DIMENSIONS[mm]	480X180X320	480X150X220
MATERIAL	stainless steel	
230 V (1000 W)		

## Universal twin and multing hose splitter MHSXA001

### Description

An easy-to-use for twin hose splitter, it has a basic profile that allows fixing it to any vice. The Blade is easily replaceable. It is made of aluminum to be lightweight and to eliminate possible corrosive effects due to machine wear.



### Product features and specifications

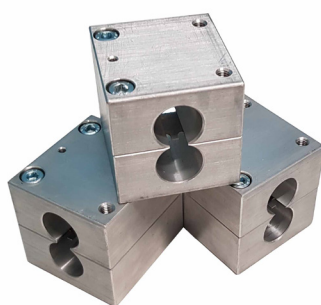
WEIGHT [kg]	2.29
-------------	------

## Hose splitter bricks for twin and multiline hoses DSTH

### Description

The DSTH bricks are practical and functional tools, they are indispensable to divide twin and multiline hoses (1SC and 2SC). There is a specific module for each size, which can be purchased separately depending on the application for which it is suitable.

- For 1SC and 2SC hoses up to size 12.
- Effective and easy to use equipment.
- Bricks can be ordered individually depending on the application.



### Product features and specifications

Part Number	DESCRIPTION
DSTH1K04	Twin and multiline hose splitter brick for - 1SC06
DSTH1K05-2K04	Twin and multiline hose splitter brick for - 1SC08-2SC06
DSTH1K06-2K05	Twin and multiline hose splitter brick for - 1SC10-2SC08
DSTH1K08	Twin and multiline hose splitter brick for - 1SC12
DSTH2K06	Twin and multiline hose splitter brick for - 2SC10
DSTH2K08	Twin and multiline hose splitter brick for - 2SC12

## Analytical Index

COMPAK1.....	pag 1
H19MM .....	pag 3
H25MINI .....	pag 4
H25MM .....	pag 5
H32MM .....	pag 6
H32ECOSLIM .....	pag 7
H32 .....	pag 8
H50 .....	pag 10
H50-46 .....	pag 12
H50-6 .....	pag 14
BH1000-1 .....	pag 16
HCL-1PH/HCL-3PH .....	pag 17
HCLMOBILE-12VDC/HCLMOBILE-24VDC .....	pag 18
CH75 .....	pag 19
HCC3-3PH .....	pag 20
HF1-1 .....	pag 21
HF3-1 .....	pag 22
HSE12VDC-1 .....	pag 23
HS1 .....	pag 24
PRT34 .....	pag 25
PRT40 .....	pag 26
PRT80 .....	pag 27
PR32 .....	pag 28
SPT20 .....	pag 29
SR1P .....	pag 30
SR07 .....	pag 30
SR/SR1R/SR2R .....	pag 31
SR2R1M .....	pag 32
CHC2 .....	pag 33
HSMA2/HSMB1 .....	pag 34
MHSXA001 .....	pag 35
DSTH .....	pag 36





# INTERPUMP

FLUID SOLUTIONS 

Powered by I.M.M. Hydraulics



**I.M.M. Hydraulics Spa**

[interpumpfluidsolutions.com](http://interpumpfluidsolutions.com)

Via Italia, 49-51

66041 - Atesa (Ch) - Italy

T. +39 (0) 0872 889225

F. +39 (0) 0872 889226



CAT-IFS-M-EN