



INTERPUMP

FLUID SOLUTIONS 

Powered by I.M.M. Hydraulics

Hydraulic Hose & Accessories

2026

Hydraulic Hose

INTERNATIONAL STANDARDS

HIGH PERFORMANCE

HYSOBARIC LINE

SOLUTIONS FOR APPLICATIONS

Thermoplastic

PTFE

INTERNATIONAL STANDARDS





TFA201KI



Hypress EASY K 1SC

3

TFA202KI



Hypress EASY K 2SC

4

TFD2012



INTERPUMP Hypress One 1SN

5

TFD2022



INTERPUMP Hypress Two 2SN

6

TFE201K



INTERPUMP Hypress 1SC

7

TFE202K



INTERPUMP Hypress 2SC

8

TFS0017



INTERPUMP Hypress R17

9

TSR04SP



INTERPUMP Hypress FOUR SP

10

TFDM4SP



INTERPUMP Hypress 4SP

11

TFS0006I



Hypress UniLock

12

TFE02TEI



Hypress 2TE

13

TFE03TEI



EN 854 3TE

14

TFS0005



SAE 100R5

15

TFS0004



INTERPUMP Hy-VACUUM - SAE 100R4

16

Hypress EASY K 1SC

APPLICATIONS :



TFA201KI



APPLICABLE SPECIFICATIONS

EN 857 1SC - ISO 11237

Compact hose according to EN 857 ISO 11237. NO-SKIVE solution. Smooth cover.

Inner tube: Synthetic rubber, extruded whole without joints, of uniform thickness.

Reinforcement: 1 high tensile steel wire braids.

Coverage: Smooth synthetic rubber, resistant to oils, fuels and atmospheric conditions.

Recommended fluids: Mineral and biological oils, glycol-water based, water, lubricants.

working temperature: from -40 to +100°C, from -40 to +70° C for water based fluids, from 0 to +70°C water.

Product number	ID		Dimension dash size	OD	Max WP		Min BP		Min BR		Weight (approx)		Ferrule
	in	mm			bar	psi	bar	psi	mm	inch	kg/m	lb/ft	
TFA201KI04	1/4"	6.4	04	12.3	225	3263	900	13050	75	2.953	0.182	0.122	001C-04
TFA201KI05	5/16"	8	05	13.5	215	3118	860	12470	85	3.346	0.203	0.136	001C-05
TFA201KI06	3/8"	9.5	06	15.7	180	2610	720	10440	90	3.543	0.248	0.167	001C-06
TFA201KI08	1/2"	12.7	08	18.9	160	2320	640	9280	130	5.118	0.341	0.229	001C-08
TFA201KI10	5/8"	16	10	22.4	130	1885	520	7540	150	5.906	0.421	0.283	001C-10
TFA201KI12	3/4"	19	12	25.9	105	1523	420	6090	180	7.087	0.491	0.33	001C-12
TFA201KI16	1"	25.4	16	33.7	88	1276	352	5104	230	9.056	0.74	0.499	001C-16

Marking: Ink-jet

Hypress EASY K 2SC

TFA202KI



APPLICATIONS :



APPLICABLE SPECIFICATIONS

EN 857 2SC - ISO 11237

Compact hose according to EN 857 ISO 11237. NO-SKIVE solution. Smooth cover.

Inner tube: Synthetic rubber, extruded whole without joints, of uniform thickness.

Reinforcement: 2 high tensile steel wire braids.

Coverage: Smooth synthetic rubber, resistant to oils, fuels and atmospheric conditions.

Recommended fluids: Mineral and biological oils, glycol-water based, water, lubricants.

working temperature: from -40 to +100°C, from -40 to +70° C for water based fluids, from 0 to +70°C water.

Product number	ID		Dimension dash size	OD	Max WP		Min BP		Min BR		Weight (approx)		Ferrule
	in	mm			bar	psi	bar	psi	mm	inch	kg/m	lb/ft	
TFA202KI04	1/4"	6.4	04	13.3	400	5800	1600	23200	75	2.953	0.281	0.189	001C-04
TFA202KI05	5/16"	8	05	14.8	350	5075	1400	20300	85	3.346	0.327	0.22	001C-05
TFA202KI06	3/8"	9.5	06	17.1	330	4785	1320	19140	90	3.543	0.418	0.281	001C-06
TFA202KI08	1/2"	12.7	08	20	275	3988	1100	15950	130	5.118	0.525	0.353	001C-08
TFA202KI10	5/8"	16	10	23.2	250	3625	1000	14500	170	6.693	0.627	0.421	001C-10
TFA202KI12	3/4"	19	12	27.6	215	3118	860	12470	200	7.874	0.782	0.526	001C-12
TFA202KI16	1"	25.4	16	35.8	165	2393	660	9570	250	9.843	1.176	0.79	001C-16

INTERPUMP Hypress One 1SN

APPLICATIONS :



TFD2012



APPLICABLE SPECIFICATIONS

Exceeds EN 853 1SN - SAE 100R1AT - ISO 1436 1SN

NO-SKIVE hose. Exceed Burst specification. Impulse tested up to double requirements. Reduced bending radius. Lightness. Smooth cover up to 1"

Inner tube: Synthetic rubber, extruded whole without joints, of uniform thickness.

Reinforcement: 1 steel wire braid.

Coverage: Anti-abrasive synthetic rubber, resistant to oils, fuels and atmospheric conditions.

Recommended fluids: Mineral and biological oils, glycol-water based, water, lubricants.

working temperature: from -40 to +100°C (intermittent 120°C), from -40 to +70° C for water based fluids, from 0 to +70°C water.

Product number	ID		Dimension dash size	OD	Max WP		Min BP		Min BR		Weight (approx)		Ferrule
	in	mm			bar	psi	bar	psi	mm	inch	kg/m	lb/ft	
TFD2012-03	3/16"	4.8	03	11.2	250	3625	1000	14500	45	1.77	0.171	0.114	001C-03
TFD2012-04	1/4"	6.4	04	12.8	225	3263	900	13052	50	1.97	0.198	0.133	001C-04
TFD2012-05	5/16"	8	05	14.4	215	3118	860	12472	60	2.36	0.237	0.159	001C-05
TFD2012-06	3/8"	9.5	06	16.9	180	2610	720	10440	70	2.76	0.301	0.202	001C-06
TFD2012-08	1/2"	12.7	08	19.9	160	2320	640	9280	90	3.54	0.361	0.242	001C-08
TFD2012-10	5/8"	16	10	23.1	130	1885	520	7540	100	3.94	0.456	0.305	001C-10
TFD2012-12	3/4"	19	12	27.2	105	1523	420	6092	120	4.72	0.574	0.384	001C-12
TFD2012-16	1"	25.4	16	35.2	88	1276	352	5104	150	5.91	0.848	0.568	001C-16
TFD0012-20	1.1/4"	31.8	20	42.6	63	914	250	3625	210	8.27	1.080	0.723	001C-20
TFD0012-24	1.1/2"	38.1	24	49.6	50	725	200	2900	250	9.84	1.340	0.897	001C-24
TFD0012-32	2"	50.8	32	63.0	40	580	160	2320	320	12.6	1.840	1.232	001C-32

Available with MSHA cover. In case of order use code TFDY012.



INTERPUMP Hypress Two 2SN

TFD2022



APPLICATIONS :



APPLICABLE SPECIFICATIONS

Exceeds EN 853 2SN - SAE 100R2AT - ISO 1436 2SN

NO-SKIVE hose. Exceed Burst specification. Impulse tested up to double requirements. Reduced bending radius. Lightness. Smooth cover up to 1"

Inner tube: Synthetic rubber, extruded whole without joints, of uniform thickness.

Reinforcement: 2 high tensile steel wire braids.

Coverage: Anti-abrasive synthetic rubber, resistant to oils, fuels and atmospheric conditions.

Recommended fluids: Mineral and biological oils, glycol-water based, water, lubricants.

working temperature: from -40 to +100°C (intermittent 120°C), from -40 to +70° C for water based fluids, from 0 to +70°C water.

Product number	ID		Dimension dash size	OD	Max WP		Min BP		Min BR		Weight (approx)		Ferrule
	mm	in			bar	psi	bar	psi	inch	mm	kg/m	lb/ft	
TFD2022-03	4.8	3/16"	03	12.8	415	6018	1650	24072	1.77	45	0.274	0.183	0022-03
TFD2022-04	6.4	1/4"	04	14.3	400	5800	1600	23200	1.97	50	0.323	0.216	0022-04
TFD2022-05	8	5/16"	05	15.9	350	5075	1400	20300	2.36	60	0.380	0.254	0022-05
TFD2022-06	9.5	3/8"	06	18.5	330	4785	1320	19200	2.76	70	0.474	0.317	0022-06
TFD2022-08	12.7	1/2"	08	21.5	275	3988	1100	15952	3.54	90	0.561	0.376	0022-08
TFD2022-10	16	5/8"	10	24.7	250	3625	1000	14500	3.94	100	0.623	0.437	0022-10
TFD2022-12	19	3/4"	12	28.8	215	3118	860	12472	4.72	120	0.850	0.569	0022-12
TFD2022-16	25.4	1"	16	37.2	165	2393	660	9572	5.91	150	1.279	0.856	0022-16
TFD0022-20	31.8	1.1/4"	20	46.5	125	1813	500	7250	8.27	210	1.855	1.242	0022-20
TFD0022-24	38.1	1.1/2"	24	53.1	90	1305	360	5220	9.84	250	2.015	1.349	0022-24
TFD0022-32	50.8	2"	32	65.8	80	1160	320	4640	12.6	320	2.690	1.800	0022-32

Available with MSHA cover. In case of order use code TFDY022.

INTERPUMP Hypress 1SC

APPLICATIONS :



TFE201K



APPROVALS :

ABS, CCS

APPLICABLE SPECIFICATIONS

Exceed EN 857 1SC - ISO 11237

NO-SKIVE hose. Exceed Burst specification. Impulse tested up to double requirements.

Inner tube: Synthetic rubber, extruded whole without joints, of uniform thickness.

Reinforcement: 1 steel wire braid.

Coverage: Smooth synthetic rubber, resistant to oils, fuels and atmospheric conditions.

Recommended fluids: Mineral and biological oils, glycol-water based, water, lubricants.

working temperature: from -40 to +120°C (intermittent 135°C), from -40 to +70° C for water based fluids, from 0 to +70°C water.

Product number	ID		Dimension dash size	OD	Max WP		Min BP		Min BR		Weight (approx)		Ferrule
	mm	in			bar	psi	bar	psi	mm	inch	kg/m	lb/ft	
TFE201K-03	4.8	3/16"	03	10.7	225	3263	900	13050	40	1,57	0.150	0.101	001C-03
TFE201K-04	6.4	1/4"	04	12.3	225	3263	900	13050	50	1.969	0.182	0.122	001C-04
TFE201K-05	8	5/16"	05	13.5	215	3118	860	12325	55	2.165	0.203	0.136	001C-05
TFE201K-06	9.5	3/8"	06	15.7	180	2610	720	10440	60	2.362	0.248	0.167	001C-06
TFE201K-08	12.7	1/2"	08	18.9	160	2320	640	9280	70	2.756	0.341	0.229	001C-08
TFE201K-10	16	5/8"	10	22.4	130	1885	520	7540	90	3.543	0.421	0.283	001C-10
TFE201K-12	19	3/4"	12	25.9	105	1523	420	6090	100	3.937	0.492	0.33	001C-12
TFE201K-16	25.4	1"	16	33.7	88	1276	352	5104	180	7.087	0.742	0.499	001C-16

Available with MSHA and Mega cover. In case of order use code TFEY01K and TFEV01K.

INTERPUMP Hypress 2SC

TFE202K



APPLICATIONS :



APPROVALS :

MED, BV, LLOYD'S, ABS, NKK, KR, DNV, CCS

APPLICABLE SPECIFICATIONS

Exceed EN 857 2SC - SAE 100 R16 - ISO 11237

Compact hose with low bend radius (R16). NO-SKIVE solution. Exceed standard Burst requirements. Impulse tested up to double requirements. Certifications valid only for MSHA cover.

Inner tube: Synthetic rubber, extruded whole without joints, of uniform thickness.

Reinforcement: 2 high tensile steel wire braids.

Coverage: Smooth synthetic rubber, resistant to oils, fuels and atmospheric conditions.

Recommended fluids: Mineral and biological oils, glycol-water based, water, lubricants.

working temperature: from -40 to +120°C (intermittent 135°C), from -40 to +70° C for water based fluids, from 0 to +70°C water.

Product number	ID		Dimension dash size	OD	Max WP		Min BP		Min BR		Weight (approx)		Ferrule
	mm	in			bar	psi	bar	psi	mm	inch	lb/ft	kg/m	
TFE202K-04	6.4	1/4"	04	13.3	400	5800	1600	23200	50	1.969	0.189	0.281	001C-04
TFE202K-05	8	5/16"	05	14.8	350	5075	1400	20300	55	2.165	0.22	0.327	001C-05
TFE202K-06	9.5	3/8"	06	17.1	330	4785	1320	19140	65	2.559	0.281	0.418	001C-06
TFE202K-08	12.7	1/2"	08	20.4	275	3988	1100	15950	90	3.543	0.353	0.525	001C-08
TFE202K-10	16	5/8"	10	23.5	250	3625	1000	14500	100	3.937	0.421	0.627	001C-10
TFE202K-12	19	3/4"	12	27.6	215	3118	860	12470	120	4.724	0.526	0.782	001C-12
TFE202K-16	25.4	1"	16	35.8	165	2393	660	9570	150	5.906	0.79	1.176	001C-16

Available with MSHA and Mega cover. In case of order use code TFEY02K and TFEV02K.

INTERPUMP Hypress R17

APPLICATIONS :



TFS0017



APPLICABLE SPECIFICATIONS

SAE 100R17 - SAE J 517 - ISO 11237 R17

Isobaric pressure rating 210 bar/3000 psi. No skive compact hose.

Inner tube: Synthetic rubber, extruded whole without joints, of uniform thickness.

Reinforcement: High tensile steel. 1 braid up to size 1/2", 2 braids from size 5/8" onwards.

Coverage: Anti-abrasive synthetic rubber, resistant to oils, fuels and atmospheric conditions.

Recommended fluids: Mineral and biological oils, glycol-water based, water, lubricants.

working temperature: from -40 to +100°C (intermittent 120°C), from -40 to +70° C for water based fluids, from 0 to +70°C water.

Product number	ID		Dimension dash size	OD	Max WP		Min BP		Min BR		Weight (approx)		Ferrule
	in	mm			bar	psi	bar	psi	mm	inch	lb/ft	kg/m	
TFS0017-03	3/16"	4.8	03	10.5	210	3045	840	12180	40	0.787	0.101	0.15	001C-03
TFS0017-04	1/4"	6.4	04	12.3	210	3045	840	12180	50	1.969	0.124	0.185	001C-04
TFS0017-05	5/16"	7.9	05	13.5	210	3045	840	12180	55	2.165	0.132	0.196	001C-05
TFS0017-06	3/8"	9.5	06	15.7	210	3045	840	12180	65	2.559	0.172	0.256	001C-06
TFS0017-08	1/2"	12.7	08	19.4	210	3045	840	12180	90	3.543	0.254	0.378	001C-08
TFS0017-10	5/8"	16	10	23.5	210	3045	840	12180	100	3.937	0.419	0.624	001C-10
TFS0017-12	3/4"	19	12	27.6	210	3045	840	12180	120	4.724	0.513	0.764	001C-12
TFS0017-16	1"	25.4	16	36.2	210	3045	840	12180	150	5.906	0.829	1.233	001C-16

Available with MSHA and Mega cover. In case of order use code TFSM017 and TFSV017.

Marking: Available also embossed brand version. In case of order use code TFS0017N.

INTERPUMP Hypress FOUR SP

TSR04SP



APPLICATIONS :



APPLICABLE SPECIFICATIONS

IMM SPECS

4 high tensile spiral high flexibility. Performance according EN856 - ISO 3862 4SP.

Inner tube: Synthetic rubber, extruded whole without joints, of uniform thickness.

Reinforcement: 4 steel wire spirals.

Coverage: Anti-abrasive synthetic rubber, resistant to oils, fuels and atmospheric conditions.

Recommended fluids: Mineral and biological oils, glycol-water based, water, lubricants.

working temperature: from -40 to +100°C (intermittent 120°C), from -40 to +70° C for water based fluids, from 0 to +70°C water.

Product number	ID		Dimension	OD	Max WP		Min BP		Min BR		Weight (approx)		FERRULE
	mm	in	dash size		bar	psi	bar	psi	mm	inch	lb/ft	kg/m	TWO PIECES SKIVE
TSR04SP-06	9.5	3/8"	06	19.7	445	6453	1780	25810	180	7.087	0.448	0.667	0SI4-06
TSR04SP-08	12.7	1/2"	08	22.5	415	6018	1660	24070	230	9.055	0.522	0.777	0SI4-08
TSR04SP-10	16	5/8"	10	26.2	350	5075	1400	20300	250	9.843	0.635	0.945	0SI4-10
TSR04SP-12	19	3/4"	12	29.7	350	5075	1400	20300	300	11.811	0.764	1.136	0009-12
TSR04SP-16	25.4	1"	16	36.7	280	4060	1120	16240	340	13.386	1.096	1.631	0009-16
TSR04SP-20	31.8	1.1/4"	20	44.6	210	3045	840	12180	460	18.11	1.440	2.143	004H-20
TSR04SP-24	38.1	1.1/2"	24	51.5	185	2683	740	10730	560	22.047	1.797	2.675	004H-24

Available with MSHA and Mega cover. In case of order use code TSRM45P and TSRV45P.

INTERPUMP Hypress 4SP

APPLICATIONS :



TFDM4SP



APPROVALS :

MED, DNV - GL, BV, MSHA

APPLICABLE SPECIFICATIONS

EN 856 4SP - ISO 3862 4SP

4 high tensile spiral high flexibility. MSHA cover. Exceeding burst requirements.

Inner tube: Synthetic rubber, extruded whole without joints, of uniform thickness.

Reinforcement: 4 steel wire spirals.

Coverage: Anti-abrasive synthetic rubber, resistant to oils, fuels and atmospheric conditions.

Recommended fluids: Hydraulic fluids petroleum based (mineral oils), glycol-water based, water, lubricants.

working temperature: from -40 to +100° C petroleum based fluids (Intermittent 120°C), from -40 to +70° C for water based fluids, from 0 to +70°C water.

Product number	ID		Dimension dash size	OD	Max WP		Min BP		Min BR		Weight (approx)		FERRULE	
	mm	in			bar	psi	bar	psi	mm	inch	lb/ft	kg/m	TWO PIECES SKIVE	TWO PIECES NO SKIVE
TFDM4SP-04	6.4	1/4"	04	17.8	450	6525	1800	26100	150	5.906	0.398	0.592	0009-04	-
TFDM4SP-06	9.5	3/8"	06	21.2	445	6453	1780	25810	180	7.087	0.531	0.79	0009-06	-
TFDM4SP-08	12.7	1/2"	08	24.3	415	6018	1660	24070	230	9.055	0.632	0.94	0009-08	-
TFDM4SP-10	16	5/8"	10	28	350	5075	1400	20300	250	9.843	0.756	1.125	0009-10	-
TFDM4SP-12	19	3/4"	12	32	350	5075	1400	20300	300	11.811	1.006	1.497	0009-12	BMC2-12
TFDM4SP-16	25.4	1"	16	39.5	280	4060	1120	16240	340	13.386	1.445	2.15	0009-16	BMC1-16
TFDM4SP-20	31.8	1.1/4"	20	50.8	210	3045	840	12180	460	18.11	2.122	3.157	0009-20	BMC2-20
TFDM4SP-24	38.1	1.1/2"	24	57.2	185	2683	740	10730	560	22.047	2.495	3.713	0009-24	-
TFDM4SP-32	50.8	2"	32	69.8	165	2393	660	9570	660	25.984	3.273	4.87	0009-32	-

Marking: Available also embossed brand version. In case of order use code TFDM4SPN.

ih INTERPUMP ■ ■ **Hypress 4SP** ISO 3862/EN 856 - DN 10 I.D. 3/8" - W.P. 445 BAR/6453

Hypress UniLock

TFS0006I



APPLICATIONS :



APPLICABLE SPECIFICATIONS

SAE 100R6 - EN 854 1TE

Unilock fittings series, easy assembly, no tools or clamps required. Safety factor 4:1. Do not use for compressed air braking systems and circuits subject to high pressure impulses.

Inner tube: Oil resistant synthetic rubber.

Reinforcement: 1 textile braid.

Coverage: Synthetic rubber resistant to oils, fuels and atmospheric conditions.

Recommended fluids: Hydraulic fluids petroleum based (mineral oils), glycol-water based, water, lubricants.

working temperature: from -40 to +100° C petroleum based fluids, from -40 to +70° C for water based fluids, from 0 to +70°C water.

Product number	ID		Dimension dash size	OD	Max WP Std fitting		Max WP UniLock		Min BR		Weight (approx)		Ferrule
	in	mm			bar	psi	bar	psi	mm	inch	kg/m	lb/ft	
TFS0006I03	3/16"	4.8	03	11.0	34	490	-	-	50	1.969	0.099	0.067	0007-03
TFS0006I04	1/4"	6.4	04	12.5	28	400	28	400	65	2.559	0.1	0.067	0007-04
TFS0006I05	5/16"	8	05	14.1	28	400	* - on request		75	2.953	0.125	0.084	0007-05
TFS0006I06	3/8"	9.5	06	15.7	28	400	28	400	75	2.953	0.15	0.101	0007-06
TFS0006I08	1/2"	12.7	08	19.3	28	400	28	400	100	3.937	0.2	0.134	0007-08
TFS0006I10	5/8"	16	10	23.0	24	350	-	-	125	4.921	0.25	0.168	0007-10
TFS0006I12	3/4"	19	12	26.6	21	300	21	305	150	5.906	0.3	0.202	0007-12
TFS0006I16	1"	25.4	16	32.2	20	290	12	174	135	5.315	0.45	0.302	0007-16

Marking: Ink-jet

Hypress 2TE

TFE02TEI

APPLICATIONS :



APPLICABLE SPECIFICATIONS

EN 854 2TE

Braided hose textile.

Inner tube: Oil resistant synthetic rubber.
Reinforcement: 1 textile braid.
Coverage: Synthetic rubber resistant to oils, fuels and atmospheric conditions.
Recommended fluids: Mineral and biological oils, glycol-water based, water, lubricants.
working temperature: from -40 to + 100° C petroleum based fluids, from -40 to +70° C for water based fluids, from 0 to +70°C water.

Product number	ID		Dimension dash size	OD	Max WP		Min BP		Min BR		Weight (approx)		Ferrule
	in	mm			bar	psi	bar	psi	mm	inch	kg/m	lb/ft	
TFE02TEI03	3/16"	4.8	03	11.8	80	1160	320	4640	35	1.378	0.118	0.079	0003-03
TFE02TEI04	1/4"	6.4	04	13.4	75	1088	300	4350	40	1.575	0.140	0.094	0007-04
TFE02TEI05	5/16"	8	05	14.9	68	986	272	3944	50	1.969	0.154	0.103	0007-05
TFE02TEI06	3/8"	9.5	06	16.5	63	914	252	3654	60	2.362	0.179	0.120	0007-06
TFE02TEI08	1/2"	12.7	08	19.7	58	841	232	3364	70	2.756	0.226	0.152	0007-08
TFE02TEI10	5/8"	16	10	23.9	50	725	200	2900	90	3.543	0.312	0.210	0007-10
TFE02TEI12	3/4"	19	12	27	45	653	180	2610	110	4.331	0.342	0.230	0007-12
TFE02TEI16	1"	25.4	16	34.4	40	580	160	2320	150	5.906	0.483	0.325	0007-16

Marking: White ink branded (customization not possible)

EN 854 3TE

TFE03TEI



APPLICATIONS :



APPLICABLE SPECIFICATIONS

EN 854 3TE

Braided hose textile.

Inner tube: Oil resistant synthetic rubber.

Reinforcement: Textile braids.

Coverage: Synthetic rubber resistant to oils, fuels and atmospheric conditions.

Recommended fluids: Biological and mineral oils, glycol-water based, water, lubricants.

working temperature: from -40 to + 100° C petroleum based fluids, from -40 to +70° C for water based fluids, from 0 to +70°C water.

Product number	ID		Dimension dash size	OD	Max WP		Min BP		Min BR		Weight (approx)		Ferrule
	mm	in			bar	psi	bar	psi	mm	inch	kg/m	lb/ft	
TFE03TEI03	4.8	3/16"	03	12.8	160	2320	640	9280	40	1.575	0.136	0.091	0003-03
TFE03TEI04	6.4	1/4"	04	14.4	145	2103	580	8410	45	1.772	0.159	0.107	0003-04
TFE03TEI05	8	5/16"	05	16.9	130	1885	520	7540	55	2.165	0.217	0.146	0003-05
TFE03TEI06	9.5	3/8"	06	18.5	110	1595	440	6380	70	2.756	0.244	0.164	0003-06
TFE03TEI08	12.7	1/2"	08	21.7	93	1349	372	5394	85	3.346	0.298	0.200	0003-08
TFE03TEI10	16	5/8"	10	25.9	80	1160	320	4640	105	4.134	0.395	0.265	0003-10
TFE03TEI12	19	3/4"	12	29	70	1015	280	4060	130	5.118	0.445	0.299	0003-12
TFE03TEI16	25.4	1"	16	35.9	55	798	220	3190	150	5.906	0.589	0.396	0003-16

SAE 100R5

TFS0005

APPLICATIONS :



APPLICABLE SPECIFICATIONS

SAE 100R5

Abrasion resistant textile braid cover. NO -SKIVE solution available.

Inner tube: Synthetic rubber, extruded whole without joints, of uniform thickness.

Reinforcement: 1 steel wire braid.

Coverage: Textile braided cover.

Recommended fluids: Hydraulic fluids petroleum based (mineral oils), glycol-water based, water, lubricants.

working temperature: from -40 to + 100° C petroleum based fluids (Intermittent 120°C), from -40 to +70° C for water based fluids, from 0 to +70°C water.

Product number	ID		SAE size**	OD	Max WP		Min BP		Min BR		Weight (approx)		Ferrule
	mm	in			bar	psi	bar	psi	mm	inch	kg/m	lb/ft	
TFS0005-04	4.8	3/16"	04	13.2	210	3045	840	12180	75	2.953	0.19	0.128	0003-03
TFS0005-05	6.4	1/4"	05	14.8	210	3045	840	12180	85	3.346	0.224	0.151	0003-04
TFS0005-06	7.9	5/16"	06	17.2	157	2277	628	9106	100	3.937	0.283	0.19	0003-05
TFS0005-08	10.3	13/32"	08	19.5	140	2030	560	8120	115	4.528	0.35	0.235	0003-06
TFS0005-10	12.7	1/2"	10	23.4	122	1769	488	7076	140	5.512	0.473	0.318	0003-08
TFS0005-12	15.9	5/8"	12	27.4	105	1523	420	6090	165	6.496	0.617	0.415	0003-10
TFS0005-16	22.2	7/8"	16	31.4	56	812	224	3248	185	7.283	0.57	0.383	0003-12
TFS0005-20	28.6	1.1/8"	20	38.1	43	624	172	2494	230	9.055	0.795	0.534	*
TFS0005-24	34.9	1.3/8"	24	44.5	35	508	140	2030	265	10.433	1.02	0.685	*
TFS0005-32	46	1.13/16"	32	56.4	24	348	96	1392	335	13.189	1.42	0.954	*

* Ask to our Technical Dept.

Marking: White ink branded (customization not possible)

INTERPUMP Hy-VACUUM - SAE 100R4

TFS0004



APPLICATIONS :



APPLICABLE SPECIFICATIONS

SAE 100R4

Biological oils compatibility - High Ozone Resistance - Half Bend Radius

Inner tube: Oil resistant synthetic rubber.

Reinforcement: 2 textile braids + 1 spiral braid.

Coverage: Synthetic rubber resistant to oils, fuels and atmospheric conditions.

Recommended fluids: Hydraulic fluids petroleum based, glycol-water based, lubricants.

working temperature: from -40 to +100°C continuous +70°C for water based fluids

Product number	ID		Dimension dash size	OD	Max WP		Min BP		Min BR		vacuum bar	Weight (approx)		Ferrule
	in	mm			bar	psi	bar	psi	mm	inch		kg/m	lb/ft	
TFS0004-12	3/4"	19	12	29	21	315	84	1260	60	2.4	0.9	0.61	0.41	0003-12
TFS0004-16	1 "	25	16	35	17	255	68	1020	75	3.0	0.9	0.75	0.51	012N-16
TFS0004-20	1.1/4"	32	20	42	14	210	56	840	100	3.9	0.9	0.92	0.62	012N-20
TFS0004-24	1.1/2"	38	24	48.5	10.5	158	42	630	127	5.0	0.9	1.14	0.77	012N-24
TFS0004-32	2 "	51	32	63	7	105	28	420	150	5.9	0.9	1.81	1.21	012N-32
TFS0004-40	2.1/2"	63.5	40	76	4	60	16	240	178	7.0	0.9	2.43	1.64	012N-40
TFS0004-48	3 "	76	48	89	4	60	16	240	230	9.1	0.9	2.99	2.01	012N-48

Marking: Available only "mylar"

ih INTERPUMP **Hy-Vacuum** SAE 100 R4 - DN 76 I.D. 3" - W.P. 4 BAR/56 PSI I/2020

HIGH PERFORMANCE

in!



TFDH012B



INTERPUMP HyCelsius
One 1SN

19

TFDH022B



INTERPUMP HyCelsius
Two 2SN

20

TFDL012N



INTERPUMP HyFreeze
1SN

21

TFDL022N



INTERPUMP HyFreeze
2SN

22

TFE2PF2



INTERPUMP PilotFlex 120

23

TFE2P15



INTERPUMP Pilot Plus
150

24

THE201K



INTERPUMP LongLife 1SC

25

THE202K



INTERPUMP LongLife
2SC

26

THE2M2K



INTERPUMP MARATHON
2SC

27

THE0T3K



INTERPUMP
TREETHLON

28

TFDR4SH



INTERPUMP HyGreen
4SH

29

TFDR013



INTERPUMP HyGreen R13

30

TFDR015



31

INTERPUMP HyCelsius One 1SN

APPLICATIONS :



TFDH012B



APPLICABLE SPECIFICATIONS

EN 853 1SN SAE 100R1AT

Wide range temperature resistance. Hoses are not designed and not approved for "air brake" applications on railway and/or mobile equipment. Do not use with compressor.

Inner tube: Synthetic rubber, extruded whole without joints, of uniform thickness.

Reinforcement: 1 steel wire braid.

Coverage: Anti-abrasive synthetic rubber, resistant to oils, fuels and atmospheric conditions.

Recommended fluids: Mineral and biological oils, glycol-water based, water, lubricants.

working temperature: from -40 to +135°C (intermittent 140°C).

Product number	ID		Dimension	OD	Max WP		Min BP		Min BR		Weight (approx)		FERRULE	
	in	mm	dash size		bar	psi	bar	psi	mm	inch	kg/m	lb/ft	TWO PIECES NO SKIVE	TWO PIECES SKIVE
TFDH012B04	1/4"	6.4	04	13.4	225	3263	900	13052	100	3.937	0,199	0,133	001C-04	012N-04
TFDH012B05	5/16"	8	05	14.4	215	3118	860	12472	115	4.528	0,237	0,159	001C-05	012N-05
TFDH012B06	3/8"	9.5	06	17.4	180	2610	720	10440	130	5.118	0,301	0,202	001C-06	012N-06
TFDH012B08	1/2"	12.7	08	19.9	160	2320	640	9280	180	7.087	0,360	0,242	001C-08	012N-08
TFDH012B10	5/8"	16	10	23.1	130	1885	520	7540	200	7.874	0,435	0,292	001C-10	012N-10
TFDH012B12	3/4"	19	12	27.2	105	1523	420	6092	240	9.449	0,574	0,385	001C-12	012N-12
TFDH012B16	1"	25.4	16	35.2	88	1276	352	5104	300	11.811	0,849	0,570	001C-16	012N-16
TFDH012B20	1.1/4"	31.8	20	42.6	63	914	250	3625	420	16.535	1,063	0,714	001C-20	012C-20
TFDH012B24	1.1/2"	38.1	24	49.6	50	725	200	2900	500	19.685	1,315	0,883	001C-24	012C-24
TFDH012B32	2"	50.8	32	63.0	40	580	160	2320	630	24.803	1,811	1,216	001C-32	012C-32
TFDH012B40	2.1/2"	63.5	40	77.4	30	435	120	1741	760	29.921	2,703	1,816	-	012C-40

Available also with black cover. In case of order use TFDH012N.

Marking: Available only "embossed"

INTERPUMP HyCelsius Two 2SN

TFDH022B



APPLICATIONS :



APPLICABLE SPECIFICATIONS

EN 853 2SN - SAE 100R2AT

Wide range temperature resistance. Hoses are not designed and not approved for "air brake" applications on railway and/or mobile equipment. Do not use with compressor.

Inner tube: Synthetic rubber, extruded whole without joints, of uniform thickness.

Reinforcement: 2 high tensile steel wire braids.

Coverage: Anti-abrasive synthetic rubber, resistant to oils, fuels and atmospheric conditions.

Recommended fluids: Mineral and biological oils, glycol-water based, water, lubricants.

working temperature: from -40 to +135°C (intermittent 140°C).

Product number	ID		Dimension dash size	OD	Max WP		Min BP		Min BR		Weight (approx)		FERRULE	
	in	mm			bar	psi	bar	psi	mm	inch	kg/m	lb/ft	TWO PIECES NO SKIVE	TWO PIECES SKIVE
TFDH022B04	1/4"	6.4	04	14.3	400	5800	1600	23200	100	3.937	0,323	0,217	0022-04	012N-04
TFDH022B05	5/16"	8	05	15.9	350	5075	1400	20300	115	4.528	0,380	0,255	0022-05	012N-05
TFDH022B06	3/8"	9.5	06	18.5	330	4785	1320	19140	130	5.118	0,473	0,318	0022-06	012N-06
TFDH022B08	1/2"	12.7	08	21.5	275	3988	1100	15950	180	7.087	0,560	0,376	0022-08	012N-08
TFDH022B10	5/8"	16	10	24.7	250	3625	1000	14500	200	7.874	0,656	0,440	0022-10	012N-10
TFDH022B12	3/4"	19	12	28.8	215	3118	860	12470	240	9.449	0,855	0,574	0022-12	012N-12
TFDH022B16	1"	25.4	16	27,2	165	2393	660	9570	300	11.811	1,279	0,859	0022-16	012N-16
TFDH022B20	1.1/4"	31.8	20	46.5	125	1813	500	7250	420	16.535	1,835	1,232	0022-20	012N-20
TFDH022B24	1.1/2"	38.1	24	53.1	90	1305	360	5220	500	19.685	1,991	1,337	0022-24	012N-24
TFDH022B32	2"	50.8	32	65.8	80	1160	320	4640	630	24.803	2,662	1,787	0022-32	012N-32

Available also with black cover. In case of order use TFDH022N.

Marking: Available only "embossed"

INTERPUMP HyFreeze 1SN

APPLICATIONS :



TFDL012N



APPLICABLE SPECIFICATIONS

EN 853 1SN - SAE 100R1AT

Suitable for very cold environments.

Inner tube: Synthetic rubber, extruded whole without joints, of uniform thickness.

Reinforcement: 1 steel wire braid.

Coverage: Anti-abrasive synthetic rubber, resistant to oils, fuels and atmospheric conditions.

Recommended fluids: Mineral and biological oils, glycol-water based, water, lubricants.

working temperature: from -40 to +100°C, min. external temperature -50°C.

Product number	ID		Dimension dash size	OD	Max WP		Min BP		Min BR		Weight (approx)		Ferrule
	in	mm			psi	bar	bar	psi	mm	inch	kg/m	lb/ft	
TFDL012N04	1/4"	6.4	04	12.8	3263	225	900	13052	100	3.937	0.198	0.133	001C-04
TFDL012N05	5/16"	8	05	14.4	3118	215	860	12472	115	4.528	0.237	0.159	001C-05
TFDL012N06	3/8"	9.5	06	16.9	2610	180	720	10440	130	5.118	0.301	0.202	001C-06
TFDL012N08	1/2"	12.7	08	19.9	2320	160	640	9280	180	7.087	0.361	0.242	001C-08
TFDL012N10	5/8"	16	10	23.1	1885	130	520	7540	200	7.874	0.456	0.305	001C-10
TFDL012N12	3/4"	19	12	27.2	1523	105	420	6092	240	9.449	0.574	0.384	001C-12
TFDL012N16	1"	25.4	16	35.2	1276	88	352	5104	300	11.811	0.848	0.568	001C-16

Marking: Available only "embossed"

INTERPUMP HyFreeze 2SN

TFDLO22N



APPLICATIONS :



APPLICABLE SPECIFICATIONS

EN 853 2SN - SAE 100R2AT

Suitable for very cold environments.

Inner tube: Synthetic rubber, extruded whole without joints, of uniform thickness.

Reinforcement: 2 high tensile steel wire braids.

Coverage: Anti-abrasive synthetic rubber, resistant to oils, fuels and atmospheric conditions.

Recommended fluids: Mineral and biological oils, glycol-water based, water, lubricants.

working temperature: from -40 to +100°C, min. external temperature -50°C.

Product number	ID		Dimension dash size	OD	Max WP		Min BP		Min BR		Weight (approx)		Ferrule
	in	mm			bar	psi	bar	psi	mm	inch	kg/m	lb/ft	
TFDLO22N04	1/4"	6.4	04	14.3	400	5800	1600	23200	100	3.937	0.323	0.216	0022-04
TFDLO22N05	5/16"	8	05	15.9	350	5075	1400	20300	115	4.528	0.380	0.254	0022-05
TFDLO22N06	3/8"	9.5	06	18.5	330	4785	1320	19200	130	5.118	0.474	0.317	0022-06
TFDLO22N08	1/2"	12.7	08	21.5	275	3988	1100	15952	180	7.087	0.561	0.376	0022-08
TFDLO22N10	5/8"	16	10	24.7	250	3625	1000	14500	200	7.874	0.623	0.437	0022-10
TFDLO22N12	3/4"	19	12	28.8	215	3118	860	12472	240	9.449	0.850	0.569	0022-12
TFDLO22N16	1"	25.4	16	37.2	165	2393	660	9572	300	11.811	1.279	0.856	0022-16
TFDLO22N20	1.1/4"	31.8	20	46.5	125	1813	500	7250	420	16.535	1.855	1.242	0022-20
TFDLO22N24	1.1/2"	38.1	24	53.1	90	1305	360	5220	500	19.685	2.015	1.349	0022-24
TFDLO22N32	2"	50.8	32	65.8	80	1160	320	4640	630	24.803	2.690	1.800	0022-32

Marking: Available only "embossed"

INTERPUMP PilotFlex 120

APPLICATIONS :



TFE2PF2



APPLICABLE SPECIFICATIONS

IMM specification

Smooth cover with high abrasion resistance. User friendly and Easy to Handle configuration. Extreme compactness and flexibility with the lowest bend radius. Tested up 1.000.000 cycles. Safety factor 4:1.

Inner tube: Synthetic rubber, extruded whole without joints, of uniform thickness.

Reinforcement: 1 high tensile steel wire braid.

Coverage: Smooth synthetic rubber, resistant to oils, fuels and atmospheric conditions.

Recommended fluids: Mineral and biological oils, glycol-water based, water, lubricants.

working temperature: from -40 to +100°C (intermittent 120°C), from -40 to +70° C for water based fluids, from 0 to +70°C water.

Product number	ID		Dimension dash size	OD	Max WP		Min BP		Min BR		Weight (approx)		Ferrule
	in	mm			bar	psi	bar	psi	mm	inch	kg/m	lb/ft	
TFE2PF2-03	3/16"	4.8	03	9.0	120	1750	480	7000	20	0.787	0.10	0.067	0007-03
TFE2PF2-04	1/4"	6.4	04	10.7	120	1750	480	7000	25	0.984	0.13	0.087	001C-04
TFE2PF2-05	5/16"	8.0	05	13.0	120	1750	480	7000	30	1.181	0.19	0.130	001C-05

Size 03 and 04 available with reduced fittings 001C-03SW and 001C-04SW / 0350-03-02SW and 0350-04-02SW.

Marking: Available only "mylar"

INTERPUMP Pilot Plus 150

TFE2P15



APPLICATIONS :



APPLICABLE SPECIFICATIONS

IMM specification

Lightweight. Compact design. High flexibility. Tested up 1.000.000 impulse cycles at rated working pressure.

Inner tube: Synthetic rubber, extruded whole without joints, of uniform thickness.

Reinforcement: 1 high tensile steel wire braid.

Coverage: Smooth synthetic rubber, resistant to oils, fuels and atmospheric conditions.

Recommended fluids: Mineral and biological oils, glycol-water based, water, lubricants.

working temperature: from -40 to +120°C (intermittent 135°C), from -40 to +70° C for water based fluids, from 0 to +70°C water.

Product number	ID		Dimension dash size	OD	Max WP		Min BP		Min BR		Weight (approx)		Ferrule
	in	mm			bar	psi	bar	psi	mm	inch	kg/m	lb/ft	
TFE2P15-03	3/16"	4.8	03	10.5	150	2175	600	8700	20	0.787	0.15	0.101	001C-03
TFE2P15-04	1/4"	6.4	04	11.5	150	2175	600	8700	25	0.984	0.163	0.109	001C-04
TFE2P15-05	5/16"	8	05	13.1	150	2175	600	8700	30	1.181	0.193	0.13	001C-05
TFE2P15-06	3/8"	9.5	06	14.8	150	2175	600	8700	40	1.575	0.224	0.15	001C-06
TFE2P15-08	1/2"	12.7	08	17.5	150	2175	600	8700	50	1.969	0.251	0.168	001C-08

Available with MSHA and Mega cover. In case of order use code TFEYP215 and TFEVP15.

Marking: Available only "mylar"

INTERPUMP LongLife 1SC

APPLICATIONS :



THE201K



APPROVALS :

MED, RINA, BV, LLOYD'S, NKK, KR, DNV

APPLICABLE SPECIFICATIONS

exceed EN 857 1SC- ISO 11237 1SC

No-SKIVE hose. High abrasion resistance. Pressure rating exceeding standards. Easy to install. SMOOTH COVER up to 1".

Inner tube: Synthetic rubber, extruded whole without joints, of uniform thickness.

Reinforcement: 1 high tensile steel wire braids.

Coverage: Anti-abrasive synthetic rubber, resistant to oils, fuels and atmospheric conditions.

Recommended fluids: Mineral and biological oils, glycol-water based, water, lubricants.

working temperature: from -40 to +120°C (intermittent 135°C), from -40 to +70° C for water based fluids, from 0 to +70°C water.

Product number	ID		Dimension	OD	Max WP		Min BP		Min BR		Weight (approx)		Ferrule
	in	mm	dash size		bar	psi	bar	psi	mm	inch	kg/m	lb/ft	
THE201K-04	1/4"	6.4	04	12.3	250	3625	1120	16240	50	1.969	0.182	0.122	001C-04
THE201K-05	5/16"	8	05	13.5	250	3625	1000	14500	55	2.165	0.21	0.141	001C-05
THE201K-06	3/8"	9.5	06	15.7	250	3625	1000	14500	60	2.362	0.248	0.167	001C-06
THE201K-08	1/2"	12.7	08	18.9	200	2900	800	11600	70	2.756	0.391	0.263	001C-08
THE201K-10	5/8"	16	10	22.4	150	2175	600	8700	90	3.543	0.41	0.276	001C-10
THE201K-12	3/4"	19	12	26	150	2175	600	8700	100	3.937	0.534	0.359	001C-12
THE201K-16	1"	25.4	16	33.7	110	1595	440	6380	180	7.087	0.742	0.499	001C-16
THE201K-20	1.1/4"	31.8	20	41.1	100	1450	400	5800	210	8.268	1.11	0.746	001C-20
THE201K-24	1.1/2"	38.1	24	48.6	90	1305	360	5220	300	11.811	1.39	0.934	001C-24
THE201K-32	2"	50.8	32	61.5	75	1088	300	4350	400	15.748	1.94	1.304	001C-32
THE201K-40	2.1/2"	63.5	40	73.5	50	725	200	2900	700	29.134	2.22	1.492	001C-40
THE201K-48	3"	76.2	48	86	40	580	160	2320	860	33.858	2.315	1.556	001C-48

Available with MSHA and Mega cover. In case of order use code THEY01K and THEV01K.

Marking: Available only "mylar"



INTERPUMP LongLife 2SC

THE202K



APPLICATIONS :



APPROVALS :

MED, RINA, BV, LLOYD'S, ABS, NKK, KR, DNV, CCS

APPLICABLE SPECIFICATIONS

exceed EN 857 2SC - ISO 11237

No-SKIVE hose. High abrasion resistance. Pressure rating exceeding standards. Tested up to 1.000.000 cycles up to 1". Easy to install. SMOOTH COVER up to 1".

Inner tube: Synthetic rubber, extruded whole without joints, of uniform thickness.

Reinforcement: 2 high tensile steel wire braids.

Coverage: Anti-abrasive syntetic rubber, resistant to oils, fuels and atmospheric conditions.

Recommended fluids: Mineral and biological oils, glycol-water based, water, lubricants.

working temperature: from -40 to +120°C (intermittent 135°C), from -40 to +70° C for water based fluids, from 0 to +70°C water.

Product number	ID		Dimension	OD	Max WP		Min BP		Min BR		Weight (approx)		Ferrule
	in	mm	dash size		bar	psi	bar	psi	mm	inch	kg/m	lb/ft	
THE202K-04	1/4"	6.4	04	13.3	430	6235	1720	24940	50	1.969	0.283	0.19	001C-04
THE202K-05	5/16"	8	05	14.8	400	5800	1600	23200	60	2.362	0.324	0.218	001C-05
THE202K-06	3/8"	9.5	06	17.1	350	5075	1400	20300	70	2.756	0.418	0.281	001C-06
THE202K-08	1/2"	12.7	08	20.4	310	4495	1240	17980	80	3.15	0.521	0.35	001C-08
THE202K-10	5/8"	16	10	23.5	280	4060	1120	16240	100	3.937	0.626	0.421	001C-10
THE202K-12	3/4"	19	12	27.6	240	3480	960	13920	120	4.724	0.764	0.513	001C-12
THE202K-16	1"	25.4	16	35.8	210	3045	840	12180	160	6.299	1.171	0.787	001C-16
THE202K-20	1.1/4"	31.8	20	43.1	160	2320	640	9280	250	9.843	1.53	1.028	001C-20
THE202K-24	1.1/2"	38.1	24	50.6	150	2175	600	8700	260	10.236	2.12	1.425	001C-24
THE202K-32	2"	50.8	32	63.5	100	1450	400	5800	360	14.173	2.795	1.878	001C-32
THE202K-40	2.1/2"	63.5	40	75.6	80	1160	320	4640	600	23.622	3.224	2.167	001C-40
THE202K-48	3"	76.2	48	88	65	943	260	3770	760	29.921	3.471	2.333	001C-48

Available with MSHA and Mega cover. In case of order use code THEY02K and THEV02K.

Marking: Available only "mylar"

INTERPUMP MARATHON 2SC

APPLICATIONS :



THE2M2K



APPROVALS :

MED, BV, LLOYD'S, ABS, NKK, KR, DNV, CCS

APPLICABLE SPECIFICATIONS

IMM - exceed EN 857 2SC - ISO 11237 2SC

NO-SKIVE hose. Exceed EN specification. Impulse tested up to 1.000.000 cycles.

Inner tube: Synthetic rubber, extruded whole without joints, of uniform thickness.

Reinforcement: 2 high tensile steel wire braids.

Coverage: Smooth synthetic rubber, resistant to oils, fuels and atmospheric conditions.

Recommended fluids: Mineral and biological oils, glycol-water based, water, lubricants.

working temperature: from -40 to +120°C (intermittent 135°C), from -40 to +70° C for water based fluids, from 0 to +70°C water.

Product number	ID		Dimension	OD	Max WP		Min BP		Min BR		Weight (approx)		Ferrule
	in	mm	dash size		bar	psi	bar	psi	mm	inch	kg/m	lb/ft	
THE2M2K-04	1/4"	6.4	04	13.3	450	6525	1800	26100	50	1.969	0.285	0.192	001C-04
THE2M2K-05	5/16"	8	05	14.8	420	6090	1680	24360	60	2.362	0.33	0.222	001C-05
THE2M2K-06	3/8"	9.5	06	17.1	385	5582	1540	22330	70	2.756	0.422	0.284	001C-06
THE2M2K-08	1/2"	12.7	08	20.4	350	5075	1500	21750	80	3.15	0.566	0.349	001C-08
THE2M2K-10	5/8"	16	10	23.5	350	5075	1400	20300	90	3.543	0.665	0.447	001C-10
THE2M2K-12	3/4"	19	12	27.6	280	4060	1120	16240	120	4.725	0.865	0.531	001C-12
THE2M2K-16	1"	25.4	16	36	250	3625	1000	14500	140	5.512	1.39	0.934	0022-16

Impulse tested according to EN857 2SC for dash -10 and -16. Available with MSHA and Mega cover. In case of order use code THEYM2K and THEVM2K.

INTERPUMP TREEATHLON

THEOT3K



APPLICATIONS :



APPLICABLE SPECIFICATIONS

IMM SPECS

Compact hose. NO-SKIVE construction. NBR tube compound compatible with several fluids. Approved up to 500.000 impulse cycles. Tested at 120% Max WP.

Inner tube: Synthetic rubber, extruded whole without joints, of uniform thickness.

Reinforcement: 3 high tensile steel wire braids.

Coverage: Anti-abrasive synthetic rubber, resistant to oils, fuels and atmospheric conditions.

Recommended fluids: Mineral and biological oils, glycol-water based, water, lubricants.

working temperature: from -40 to + 100° C petroleum based fluids (Intermittent 120°C), from -40 to +70° C for water based fluids, from 0 to +70°C water.

Product number	ID		Dimension dash size	OD	Max WP		Min BP		Min BR		Weight (approx)		Ferrule
	in	mm			bar	psi	bar	psi	mm	inch	kg/m	lb/ft	
THEOT3K-06	3/8"	9.5	06	18.8	500	7250	2000	29000	110	4.331	0.584	0.392	0022-06
THEOT3K-08	1/2"	12.7	08	22.4	475	6888	1900	27550	140	5.512	0.833	0.560	003C-08
THEOT3K-10	5/8"	16	10	25.8	420	6090	1680	24360	200	7.874	0.967	0.650	003C-10
THEOT3K-12	3/4"	19	12	29.6	380	5510	1520	22040	240	9.449	1.189	0.799	003C-12
THEOT3K-16	1"	25.4	16	38.0	315	4568	1260	18270	300	11.811	1.737	1.167	003C-16

Available with MSHA and Mega cover. In case of order use code THEMT3K and THEVT3K.

Marking: -

INTERPUMP HyGreen 4SH

APPLICATIONS :



TFDR4SH



APPROVALS :

MED, DNV - GL, BV, LLOYD'S, ABS, NKK, KR

APPLICABLE SPECIFICATIONS

EXCEED EN 856 4SH - ISO 3862 4SH

Biological oils compatibility. Exceed EN standard. Impulse tested up to 1.000.000 impulse cycles. High ozone and abrasion resistance.

Inner tube: Synthetic rubber, extruded whole without joints, of uniform thickness.

Reinforcement: 4 steel wire spirals.

Coverage: Anti-abrasive synthetic rubber, resistant to oils, fuels and atmospheric conditions. MSHA Cover.

Recommended fluids: Mineral and biological oils, glycol-water based, water, lubricants, compressed air
working temperature: from -40 to +100°C (intermittent 120°C), da -40 a +70°C per fluidi a base acqua e aria compressa, da 0 a +70°C acqua.

Product number	ID		Dimension dash size	OD	Max WP		Min BP		Min BR		Weight (approx)		Ferrule
	mm	in			bar	psi	bar	psi	mm	inch	lb/ft	kg/m	
TFDR4SH-12	19	3/4"	12	32	420	6090	1780	25810	210	8.268	1.056	1.572	004N-12/X Series
TFDR4SH-16	25.4	1"	16	38.4	385	5583	1750	25375	220	8.661	1.414	2.104	004N-16/X Series
TFDR4SH-20	31.8	1.1/4"	20	45.8	350	5075	1400	20300	400	15.748	1.714	2.550	004N-20/X Series
TFDR4SH-24	38.1	1.1/2"	24	53.5	300	4350	1250	18125	560	22.047	2.167	3.225	004N-24/X Series
TFDR4SH-32	50.8	2"	32	68	250	3625	1000	14500	700	27.559	3.091	4.600	004N-32/X Series

Available also in NON-MSHA version. In case of order use code TFDG4SH.

Marking: Available also embossed brand version. In case of order use code TFDR4SHN.

INTERPUMP HyGreen R13

TFDR013



APPLICATIONS :



APPROVALS :

MED, DNV - GL, BV, LLOYD'S, ABS, NKK, KR

APPLICABLE SPECIFICATIONS

EXCEED EN 856 SAE 100R13 - ISO 3862 R13

Isobaric line 5000 psi. Impulse tested up to 1.000.000 impulse cycles. Biological oil compatibility.

Inner tube: Synthetic rubber, extruded whole without joints, of uniform thickness.

Reinforcement: 4 high tensile steel wire spiral up to size 1", 6 spiral from size 1,1/4.

Coverage: Anti-abrasive synthetic rubber, resistant to oils, fuels and atmospheric conditions. MSHA cover.

Recommended fluids: Mineral and biological oils, glycol-water based, water, lubricants, compressed air
working temperature: from -40 to + 121° C (Intermittent 125°C) da -40 a +70°C per fluidi a base acqua e aria compressa, da 0 a +70°C acqua.

Product number	ID		Dimension dash size	OD	Max WP		Min BP		Min BR		Weight (approx)		Ferrule
	in	mm			bar	psi	bar	psi	mm	inch	kg/m	lb/ft	
TFDR013-12	3/4"	19	12	32.1	350	5075	1920	27840	120	4.725	1.641	1.103	004N-12/X Series
TFDR013-16	1"	25.4	16	38.7	350	5075	1660	24070	150	5.905	2.106	1.415	0013-16/X Series
TFDR013-20	1.1/4"	31.8	20	49.7	350	5075	1520	22040	210	8.248	3.891	2.615	0013-20/X Series
TFDR013-24	1.1/2"	38.1	24	57.8	350	5075	1600	23200	310	12.205	5.210	3.501	0013-24/X Series
TFDR013-32	2"	50.8	32	71.5	350	5075	1500	21750	590	23.228	6.840	4.596	0013-32/X Series

Available also in NON-MSHA version. In case of order use code TFDG013.

Marking: Available also embossed brand version. In case of order use code TFDR013N.

INTERPUMP HyGreen R15

APPLICATIONS :



APPROVALS :

MED, DNV - GL, BV, LLOYD'S, ABS, NKK, KR

APPLICABLE SPECIFICATIONS

EXCEED SAE 100R15 - ISO 3862

TFDR015



Biological oils compatibility. Exceed EN standard. Impulse tested up to 1.000.000 impulse cycles.

Inner tube: Synthetic rubber, extruded whole without joints, of uniform thickness.

Reinforcement: 4 high tensile steel wire spiral up to size 1", 6 spiral from size 1,1/4.

Coverage: Abrasion resistant synthetic rubber resistant to oils, fuels, atmospheric conditions. MSHA.

Recommended fluids: Mineral and biological oils, glycol-water based, water, lubricants, compressed air
working temperature: from -40 to + 121° C (Intermittent 125°C) da -40 a +70°C per fluidi a base acqua e aria compressa, da 0 a +70°C acqua.

Product number	ID		Dimension dash size	OD	Max WP		Min BP		Min BR		Weight (approx)		Ferrule
	in	mm			bar	psi	bar	psi	mm	inch	kg/m	lb/ft	
TFDR015-10	5/8"	16.7	10	26.8	420	6090	1750	25375	150	5.901	0.705	0.474	0013-10
TFDR015-12	3/4"	19	12	32.0	420	6090	1750	25375	210	8.268	1.573	1.057	004N-12/X Series
TFDR015-16	1"	25.4	16	38.7	420	6090	1700	24650	240	9.449	2.116	1.422	0013-16/X Series
TFDR015-20	1.1/4"	31.8	20	49.7	420	6090	1680	24360	265	10.433	3.891	2.615	0013-20/X Series
TFDR015-24	1.1/2"	38.1	24	57.8	420	6090	1680	24360	310	12.205	5.182	3.482	0013-24/X Series
TFDR015-32	2"	50.8	32	72.0	420	6090	1680	24360	590	23.228	6.892	4.631	0013-32/X Series

Available also in NON-MSHA version. In case of order use code TFDG015.

Marking: Available also embossed brand version. In case of order use code TFDR015N.

HYSOBARIC LINE





TIB2021



INTERPUMP HySOpress
3K WB

34

TIB2028



INTERPUMP HySOpress
4K WB

35

TIB2035



INTERPUMP HySOpress
5K WB

36

TIB2042



INTERPUMP HySOpress
6K WB

37

TISM021



INTERPUMP HySOpress
3K WS

38

TISM028



INTERPUMP HySOpress
4K WS

39

TISM035



INTERPUMP HySOpress
5K WS

40

TISM042



INTERPUMP HySOpress
6K WS

41

INTERPUMP HySOpress 3K WB

TIB2021



APPLICATIONS :



APPLICABLE SPECIFICATIONS

Eccede SAE 100R17, ISO 11237, ISO 18752/CC

High Flexibility and Half Bend Radius. Qualification according ISO 18752/CC.

Inner tube: Synthetic rubber, extruded whole without joints, of uniform thickness.

Reinforcement: 1-2 high-load steel wire braids.

Coverage: Anti-abrasive synthetic rubber, resistant to oils, fuels and atmospheric conditions.

Recommended fluids: Mineral and biological oils, glycol-water based, water, lubricants.

working temperature: from -40 to +120°C for oils, from -40 to +70° C for water based fluids, from 0 to +70°C water.

Product number	ID		Dimension dash size	OD	Max WP		Min BP		Min BR		Weight (approx)		Ferrule
	in	mm			bar	psi	bar	psi	mm	inch	lb/ft	kg/m	
TIB2021-04	1/4"	6.4	04	12.3	225	3263	900	13050	50	1.969	0.120	0.178	001C-04
TIB2021-05	5/16"	7.9	05	13.5	225	3263	900	13050	55	2.165	0.135	0.201	001C-05
TIB2021-06	3/8"	9.5	06	15.7	225	3263	900	13050	60	2.362	0.172	0.256	001C-06
TIB2021-08	1/2"	12.7	08	20.0	210	3045	840	12180	70	2.756	0.312	0.464	001C-08
TIB2021-10	5/8"	15.9	10	23.5	210	3045	840	12180	100	3.937	0.410	0.610	001C-10
TIB2021-12	3/4"	19	12	27.7	210	3045	840	12180	120	4.724	0.536	0.798	001C-12
TIB2021-16	1"	25.4	16	35.8	210	3045	840	12180	160	6.299	0.786	1.170	001C-16

Available with MSHA and Mega cover. In case of order use code TIBY021 and TIBV021.



INTERPUMP HySOpress 4K WB

APPLICATIONS :



TIB2028



APPLICABLE SPECIFICATIONS

Exceeds ISO 18752/CC

High Flexibility and Half Bend Radius. Qualification according ISO 18752/CC.

Inner tube: Synthetic rubber, extruded whole without joints, of uniform thickness.

Reinforcement: 2 high tensile steel wire braids.

Coverage: Synthetic rubber resistant to oils, fuels and atmospheric conditions.

Recommended fluids: Mineral and biological oils, glycol-water based, water, lubricants.

working temperature: from -40 to +120°C (intermittent 135°C), from -40 to +70° C for water based fluids, from 0 to +70°C water.

Product number	ID		Dimension	OD	Max WP		Min BP		Min BR		Weight (approx)		Ferrule
	in	mm	dash size		bar	psi	bar	psi	mm	inch	kg/m	lb/ft	
TIB2028-04	1/4"	6.4	04	13.3	280	4060	1120	16240	50	1.969	0.281	0.189	001C-04
TIB2028-06	3/8"	9.5	06	17.1	280	4060	1120	16240	70	2.756	0.418	0.281	001C-06
TIB2028-08	1/2"	12.7	08	20.4	280	4060	1120	16240	90	3.543	0.525	0.353	001C-08
TIB2028-10	5/8"	16	10	23.5	290	4205	1160	16820	100	3.937	0.626	0.421	001C-10
TIB2028-12	3/4"	19	12	27.6	280	4060	1120	16240	120	4.724	0.865	0.581	001C-12

Available with MSHA and Mega cover. In case of order use code TIBY028 and TIBV028.





INTERPUMP HySOpress 5K WB

TIB2035



APPLICATIONS :



APPLICABLE SPECIFICATIONS

Exceeds ISO 18752/CC

High Flexibility and Half Bend Radius. Qualification according ISO 18752/CC.

Inner tube: Synthetic rubber, extruded whole without joints, of uniform thickness.

Reinforcement: 2 high tensile steel wire braids.

Coverage: Smooth synthetic rubber, resistant to oils, fuels and atmospheric conditions.

Recommended fluids: Mineral and biological oils, glycol-water based, water, lubricants.

working temperature: from -40 to +120°C (intermittent 135°C), from -40 to +70° C for water based fluids, from 0 to +70°C water.

Product number	ID		Dimension	OD	Max WP		Min BP		Min BR		Weight (approx)		Ferrule
	in	mm	dash size		bar	psi	bar	psi	mm	inch	kg/m	lb/ft	
TIB2035-04	1/4"	6.4	04	13.3	350	5075	1400	20300	50	1.969	0,281	0,189	001C-04
TIB2035-06	3/8"	9.5	06	17.1	350	5075	1400	20300	70	2.756	0,418	0,281	001C-06
TIB2035-08	1/2"	12.7	08	20.4	350	5075	1400	20300	80	3.150	0,566	0,380	001C-08
TIB2035-10	5/8"	15.9	10	23.5	350	5075	1400	20300	90	3.543	0,655	0,447	001C-10

Available with MSHA and Mega cover. In case of order use code TIBY035 and TIBV035.



INTERPUMP HySOpress 6K WB

APPLICATIONS :



TIB2042



APPLICABLE SPECIFICATIONS

Exceeds ISO 18752/CC

High Flexibility and Half Bend Radius. Qualification according ISO 18752/CC.

Inner tube: Synthetic rubber, extruded whole without joints, of uniform thickness.

Reinforcement: 2 high tensile steel wire braids.

Coverage: Smooth synthetic rubber, resistant to oils, fuels and atmospheric conditions.

Recommended fluids: Mineral and biological oils, glycol-water based, water, lubricants.

working temperature: from -40 to +120°C (intermittent 135°C), from -40 to +70° C for water based fluids, from 0 to +70°C water.

Product number	ID		Dimension	OD	Max WP		Min BP		Min BR		Weight (approx)		Ferrule
	in	mm	dash size		bar	psi	bar	psi	mm	inch	kg/m	lb/ft	
TIB2042-04	1/4"	6.4	04	13.3	420	6090	1680	24360	50	1.969	0.285	0.189	001C-04

Available with MSHA and Mega cover. In case of order use code TIBY042 and TIBV042.





INTERPUMP HySOpress 3K WS

TISM021



APPLICATIONS :



APPLICABLE SPECIFICATIONS

Exceeds ISO 18752/CC

High Flexibility and Half Bend Radius. Qualification according ISO 18752/CC. MSHA cover.

Inner tube: Synthetic rubber, extruded whole without joints, of uniform thickness.

Reinforcement: 4 steel wire spirals

Coverage: Anti-abrasive synthetic rubber, resistant to oils, fuels and atmospheric conditions.

Recommended fluids: Mineral and biological oils, glycol-water based, water, lubricants.

working temperature: from -40 to +120°C for oils, from -40 to +70° C for water based fluids, from 0 to +70°C water.

Product number	ID		Dimension	OD	Max WP		Min BP		Min BR		Weight (approx)		One piece	FERRULE	
	in	mm	dash size		bar	psi	bar	psi	mm	inch	Lb/ft	kg/m	Fitting series	TWO PIECES NO SKIVE	TWO PIECES SKIVE
TISM021-20	1.1/4"	31.8	20	44.6	210	3045	840	12180	210	8.268	1.433	2.133	N series	ONI4-20	004H-20
TISM021-24	1.1/2"	38.1	24	51.5	210	3045	840	12180	250	9.843	1.790	2.664	N series	ONI4-24	004H-24
TISM021-32	2"	50.8	32	66.3	210	3045	840	12180	315	12.402	2.649	3.943	N series	ONI4-32	004N-32

Available with Mega cover. In case of order use code TISV021.



INTERPUMP HySOpress 4K WS

APPLICATIONS :



TISM028



APPLICABLE SPECIFICATIONS

Exceeds SAE 100R12 - ISO 18752/CC

High Flexibility and Half Bend Radius. Qualification according ISO 18752/CC. MSHA cover.

Inner tube: Synthetic rubber, extruded whole without joints, of uniform thickness.

Reinforcement: 4 steel wire spirals.

Coverage: Anti-abrasive synthetic rubber, resistant to oils, fuels and atmospheric conditions.

Recommended fluids: Biological and mineral oils, glycol-water based, water, lubricants.

working temperature: from -40 to +120°C for oils, from -40 to +70° C for water based fluids, from 0 to +70°C water.

Product number	ID		Dimension	OD	Max WP		Min BP		Min BR		Weight (approx)		FERRULE		One piece
	in	mm	dash size		bar	psi	bar	psi	mm	inch	kg/m	lb/ft	TWO PIECES NO SKIVE	TWO PIECES SKIVE	Fitting series
TISM028-06	3/8"	9.5	06	19.7	280	4060	1120	16240	65	2.559	0.620	0.417	0NI4-06	0SI4-06	N series
TISM028-08	1/2"	12.7	08	22.5	280	4060	1120	16240	90	3.543	0.722	0.485	0NI4-08	0SI4-08	N series
TISM028-10	5/8"	15.9	10	26.2	280	4060	1120	16240	100	3.937	0.938	0.630	0NI4-10	0SI4-10	N series
TISM028-12	3/4"	19	12	29.8	280	4060	1120	16240	120	4.724	1.142	0.768	0NI4-12	0009-12	N series
TISM028-16	1"	25.4	16	36.7	280	4060	1120	16240	150	5.906	1.622	1.090	0NI4-16	0009-16	N series
TISM028-20	1.1/4"	31.8	20	44.6	280	4060	1120	16240	210	8.268	2.275	1.529	0NI4-20	004H-20	N series
TISM028-24	1.1/2"	38.1	24	52.1	280	4060	1120	16240	250	9.843	2.952	1.978	0NI4-24	004N-24	N series
TISM028-32	2"	50.8	32	66.3	280	4060	1120	16240	315	12.402	4.457	2.995	0NI4-32	004N-32	N series

Available with Mega cover. In case of order use code TISV028.



INTERPUMP HySOpress 5K WS

TISM035



APPLICATIONS :



APPLICABLE SPECIFICATIONS

Exceeds ISO 18752/CC - SAE 100R13

High Flexibility and Half Bend Radius. Qualification according ISO 18752/CC. MSHA cover.

Inner tube: Synthetic rubber, extruded whole without joints, of uniform thickness.

Reinforcement: 4 steel wire spirals.

Coverage: Anti-abrasive synthetic rubber, resistant to oils, fuels and atmospheric conditions.

Recommended fluids: Mineral and biological oils, water, water based fluid, lubricants.

working temperature: from -40 to +120°C from -40 to +70° C for water based fluids, from 0 to +70°C water.

Product number	ID		Dimension dash size	OD	Max WP		Min BP		Min BR		Weight (approx)		FERRULE		One piece Fitting series
	mm	in			bar	psi	bar	psi	mm	inch	lb/ft	kg/m	TWO PIECES NO SKIVE	TWO PIECES SKIVE	
TISM035-06	9.5	3/8"	06	19.7	350	5075	1400	20300	65	2.559	0.417	0.620	0NI4-06	0SI4-06	N series
TISM035-08	12.7	1/2 "	08	22.5	350	5075	1400	20300	90	3.543	0.485	0.722	0NI4-08	0SI4-08	N series
TISM035-10	15.9	5/8"	10	26.2	350	5075	1400	20300	100	3.937	0.630	0.938	0NI4-10	0SI4-10	N series
TISM035-12	19	3/4"	12	29.7	350	5075	1400	20300	120	4.724	0.758	1.129	0NI4-12	0009-12	N series
TISM035-16	25.4	1"	16	36.7	350	5075	1400	20300	150	5.906	1.090	1.622	0NI4-16	004N-16	N series
TISM035-20	31.8	1.1/4"	20	45.0	350	5075	1400	20300	210	8.268	1.644	2.446	0NI4-20	004N-20	N series
TISM035-24	38	1.1/2"	24	52.9	350	5075	1400	20300	250	9.843	2.211	3.291	0NI4-24	004N-24	N series

Available with Mega cover. In case of order use code TISV035.



INTERPUMP HySOpress 6K WS

APPLICATIONS :



TISM042



APPLICABLE SPECIFICATIONS

Exceeds ISO 18752/CC - SAE 100R15

High Flexibility and Half Bend Radius. Qualification according ISO 18752/CC. MSHA cover.

Inner tube: Synthetic rubber, extruded whole without joints, of uniform thickness.

Reinforcement: 4-6 High tensile steel spirals (4 spirals up to 1", 6 spirals from 1 ¼")

Coverage: Anti-abrasive synthetic rubber, resistant to oils, fuels and atmospheric conditions.

Recommended fluids: Mineral and biological oils, water, water based fluid, lubricants.

working temperature: from -40 to +120°C from -40 to +70° C for water based fluids, from 0 to +70°C water.

Product number	ID		Dimension dash size	OD	Max WP		Min BP		Min BR		Weight (approx)		FERRULE		One piece
	mm	in			bar	psi	bar	psi	mm	inch	lb/ft	kg/m	TWO PIECES NO SKIVE	TWO PIECES SKIVE	Fitting series
TISM042-06	9.5	3/8"	06	19.7	420	6090	1680	24360	65	2.559	0.445	0.662	0NI4-06	0SI4-06	N series
TISM042-08	12.7	1/2"	08	22.5	420	6090	1680	24360	90	3.543	0.518	0.772	0NI4-08	0SI4-08	N series
TISM042-10	15.9	5/8"	10	26.2	420	6090	1680	24360	100	3.937	0.630	0.938	0NI4-10	0013-10	N series
TISM042-12	19	3/4"	12	30.6	420	6090	1680	24360	120	4.724	0.933	1.388	0NI4-12	004N-12	N series
TISM042-16	25.4	1"	16	37.6	420	6090	1680	24360	150	5.906	1.303	1.940	0NI4-16	004N-16	N series
TISM042-20	31.8	1.1/4"	20	47.8	420	6090	1680	24360	210	8.268	2.322	3.455	0NI6-20	0042-20	N series
TISM042-24	38.1	1.1/2"	24	56	420	6090	1680	24360	250	9.843	2.975	4.427	0NI6-24	0042-24	N series

Available with Mega cover. In case of order use code TISV042.

SOLUTIONS FOR APPLICATIONS





TFDC012B



INTERPUMP
COMPRESSOR One

45

THL201K



INTERPUMP LongLift 1SC INTERPUMP LongLift 2SC

46

THL202K



47

T2E101K



INTERPUMP LongLife
Dual 1SC

48

T2E102K



INTERPUMP LongLife
Dual 2SC

49

THE2J2K



INTERPUMP HYJACK

50

TFDE011



INTERPUMP HyRail

51

THE0G1K



INTERPUMP HyGEAR 1SC

52

TTRK200



INTERPUMP HyTruck 200
bar

53

TTRK250



INTERPUMP HyTruck 250
bar

54

TTRK350



INTERPUMP HyTruck 350
bar

55

THD0500



INTERPUMP HySpir 500

56

TSG0042



HyTRAKTION

57

THS00JG



INTERPUMP Mega Jet

58

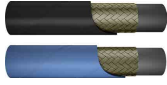
THEMMDR



INTERPUMP MEGADRILL

59

TFN001K TFB001K



INTERPUMP Jet 15C

60

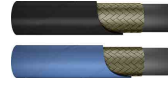
TFN002K TFB002K



INTERPUMP Jet 25C

61

TEB0E28 TEN0E28



INTERPUMP HyWASHER
4K

62

TEB0E42 TEN0E42



INTERPUMP HyWASHER
6K

63

TCB2E28 TCN2E28



INTERPUMP HyWASHER
PLUS 4K

64

TCB2E42 TCN2E42



INTERPUMP HyWASHER
PLUS 6K

65

TFW0070



INTERPUMP Hyblast 10k

66

TFW0085



INTERPUMP Hyblast 12k

67

TFW0110 TFW0100



INTERPUMP Hyblast 15k

68

TFW0125 TFW0120



INTERPUMP Hyblast 18k

69

TFW0145 TFW0135



INTERPUMP Hyblast 20k

70

INTERPUMP COMPRESSOR One

APPLICATIONS :



TFDC012B



APPLICABLE SPECIFICATIONS

IMM - exceed EN 853 1SN

Pin pricked hose for compressor.

Inner tube: Synthetic rubber, extruded whole without joints, of uniform thickness.

Reinforcement: 1 steel wire braid.

Coverage: Anti-abrasive synthetic rubber, resistant to oils, fuels and atmospheric conditions.

Recommended fluids: Mineral oils, glycols and polyglycols, transmission fluids, air, air with oil vapours, mineral oils in aqueous emulsion (up to +212°F/ + 100°C).

working temperature: from -40 to +135°C (intermittent 140°C).

Product number	ID		Dimension	OD	Max WP		Min BP		Min BR		Weight (approx)		FERRULE	
	in	mm	dash size		bar	psi	bar	psi	mm	inch	kg/m	lb/ft	TWO PIECES NO SKIVE	TWO PIECES SKIVE
TFDC012B04	1/4"	6.4	04	12,8	225	3263	900	13050	100	3.937	0,199	0,133	001C-04	012N-04
TFDC012B05	5/16"	8	05	14,4	215	3118	860	12472	115	4.528	0,237	0,159	001C-05	012N-05
TFDC012B06	3/8"	9.5	06	16.9	180	2610	720	10440	130	5.118	0,301	0,202	001C-06	012N-06
TFDC012B08	1/2"	12.7	08	19.9	160	2320	640	9280	180	7.087	0,360	0,242	001C-08	012N-08
TFDC012B10	5/8"	16	10	23.1	130	1885	520	7540	200	7.874	0,435	0,292	001C-10	012N-10
TFDC012B12	3/4"	19	12	27.2	105	1523	420	6092	240	9.449	0,574	0,385	001C-12	012N-12
TFDC012B16	1"	25.4	16	35.2	88	1276	352	5104	300	11.811	0,849	0,570	001C-16	012N-16
TFDC012B20	1.1/4"	31.8	20	42.6	63	914	250	3625	420	16.535	1,063	0,714	001C-20	012C-20
TFDC012B24	1.1/2"	38.1	24	49.6	50	725	200	2900	500	19.685	1,315	0,885	001C-24	012C-24
TFDC012B32	2"	50.8	32	63.0	40	580	160	2320	630	24.803	1,811	1,216	001C-32	012C-32

Compressed air applications require additional safety devices. Hoses are not designed and not approved for "air brake" applications.

Marking: Available only "embossed"

INTERPUMP LongLift 1SC

THL201K



APPLICATIONS :



APPLICABLE SPECIFICATIONS

exceed EN 857 1SC- ISO 112237 1SC

NO-SKIVE hose. High abrasion resistance. Pressure rating exceeding standards. Easy to install. Approved and released for lift truck application. High resistance and elasticity. High flexibility at small bend radius. SMOOTH COVER.

Inner tube: Synthetic rubber, extruded whole without joints, of uniform thickness.

Reinforcement: 1 high tensile steel wire braids.

Coverage: Smooth synthetic rubber, resistant to oils, fuels and atmospheric conditions.

Recommended fluids: Mineral and biological oils, glycol-water based, water, lubricants.

working temperature: from -40 to +120° C (Intermittent 135°C), from -40 to +70° C for water based fluids, from 0 to +70°C water.

Product number	ID		Dimension dash size	OD	Max WP		Min BP		Min BR		Weight (approx)		Ferrule
	in	mm			bar	psi	bar	psi	mm	inch	kg/m	lb/ft	
THL201K-04	1/4"	6.4	04	12.3	250	3625	1120	16240	50	1.969	0.182	0.122	001C-04
THL201K-05	5/16"	8	05	13.5	250	3625	1000	14500	55	2.165	0.21	0.141	001C-05
THL201K-06	3/8"	9.5	06	15.7	250	3625	1000	14500	60	2.362	0.248	0.167	001C-06
THL201K-08	1/2"	12.7	08	18.9	200	2900	800	11600	70	2.756	0.391	0.263	001C-08
THL201K-10	5/8"	16	10	22.4	150	2175	600	8700	90	3.543	0.41	0.276	001C-10
THL201K-12	3/4"	19	12	26	150	2175	600	8700	100	3.937	0.534	0.359	001C-12
THL201K-16	1"	25.4	16	33.7	110	1595	440	6380	180	7.087	0.742	0.499	001C-16

Marking: Available only "mylar"

INTERPUMP LongLift 2SC

APPLICATIONS :



THL202K



APPLICABLE SPECIFICATIONS

exceed EN 857 2SC - ISO 11237

NO-SKIVE hose. High abrasion resistance. Pressure rating exceeding standards. Easy to install. Approved and released for lift truck application. High resistance and elasticity. High flexibility at small bend radius. SMOOTH COVER.

Inner tube: Synthetic rubber, extruded whole without joints, of uniform thickness.

Reinforcement: 2 high tensile steel wire braids.

Coverage: Smooth synthetic rubber, resistant to oils, fuels and atmospheric conditions.

Recommended fluids: Mineral and biological oils, glycol-water based, water, lubricants.

working temperature: from -40 to +120° C (Intermittent 135°C), from -40 to +70° C for water based fluids, from 0 to +70°C water.

Product number	ID		Dimension dash size	OD	Max WP		Min BP		Min BR		Weight (approx)		Ferrule
	in	mm			bar	psi	bar	psi	mm	inch	kg/m	lb/ft	
THL202K-04	1/4"	6.4	04	13.3	430	6235	1720	24940	50	1.969	0.283	0.19	001C-04
THL202K-05	5/16"	8	05	14.8	400	5800	1600	23200	60	2.362	0.324	0.218	001C-05
THL202K-06	3/8"	9.5	06	17.1	350	5075	1400	20300	70	2.756	0.418	0.281	001C-06
THL202K-08	1/2"	12.7	08	20.4	310	4495	1240	17980	80	3.15	0.521	0.35	001C-08
THL202K-10	5/8"	16	10	23.5	280	4060	1120	16240	100	3.937	0.626	0.421	001C-10
THL202K-12	3/4"	19	12	27.6	240	3480	960	13920	120	4.724	0.764	0.513	001C-12
THL202K-16	1"	25.4	16	35.8	210	3045	840	12180	160	6.299	1.171	0.787	001C-16

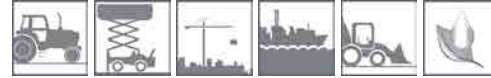
Marking: Available only "mylar"

INTERPUMP LongLife Dual 1SC

T2E101K



APPLICATIONS :



APPLICABLE SPECIFICATIONS

exceed EN 857 - ISO 11237

No-SKIVE hose. High abrasion resistance. Pressure rating exceeding standards. Easy to install. SMOOTH COVER.

Inner tube: Synthetic rubber, extruded whole without joints, of uniform thickness.

Reinforcement: 1 or 2 high tensile steel wire braids.

Coverage: Smooth synthetic rubber, resistant to oils, fuels and atmospheric conditions.

Recommended fluids: Mineral and biological oils, glycol-water based, water, lubricants.

working temperature: from -40 to +120° C (Intermittent 135°C), from -40 to +70° C for water based fluids.

Product number	ID		Dimension	OD	T.H.	T.H. max	Max WP		Min BP		Min BR		Weight (approx)		Ferrule
	in	mm	dash size	mm	mm	mm	bar	psi	bar	psi	mm	inch	kg/m	lb/ft	
T2E101K-04	1/4	6.4	04	12.4	24.8	26	250	3625	1120	16240	50	1.969	0.364	0.244	001C-04
T2E101K-05	5/16	8.0	05	13.5	27.0	28.2	250	3625	1000	14500	55	2.165	0.420	0.282	001C-05
T2E101K-06	3/8	9.5	06	15.6	31.2	32.6	250	3625	1000	14500	60	2.362	0.490	0.330	001C-06
T2E101K-08	1/2	12.7	08	19	38	39.4	200	2900	800	11600	70	2.756	0.782	0.525	001C-08

A specific machine is available to split the twin hose . In case of order use code MHSXA001.



Marking: Available also white ink-jet brand version. In case of order use code T2E101KI.

INTERPUMP LongLife Dual 2SC

APPLICATIONS :



T2E102K



APPLICABLE SPECIFICATIONS

exceed EN 857 - ISO 11237 2SC

No-SKIVE hose. High abrasion resistance. Pressure rating exceeding standards. Easy to install. SMOOTH COVER.

Inner tube: Synthetic rubber, extruded whole without joints, of uniform thickness.

Reinforcement: 1 or 2 high tensile steel wire braids.

Coverage: Smooth synthetic rubber, resistant to oils, fuels and atmospheric conditions.

Recommended fluids: Mineral and biological oils, glycol-water based, water, lubricants.

working temperature: from -40 to +120° C (Intermittent 135°C), from -40 to +70° C for water based fluids, from 0 to +70°C water.

Product number	ID		Dimension	OD	T.H.	T.H. max	Max WP		Min BP		Min BR		Weight (approx)		Ferrule
	in	mm	dash size	mm	mm	mm	bar	psi	bar	psi	mm	inch	kg/m	lb/ft	
T2E102K-04	1/4	6.4	04	13.3	26.6	27.8	430	6235	1720	24940	60	2.362	0.566	0.380	001C-04
T2E102K-05	5/16	8.0	05	14.8	29.6	31.8	400	5800	1600	23200	60	2.362	0.640	0.430	001C-05
T2E102K-06	3/8	9.5	06	17.1	34.2	32.6	350	5075	1400	20300	70	2.756	0.836	0.561	001C-06
T2E102K-08	1/2	12.7	08	20.5	41	42.4	310	4495	1240	17980	80	3.150	1.042	0.699	001C-08

A specific machine is available to split the twin hose . In case of order use code MHSXA001.



Marking: Available also white ink-jet brand version. In case of order use code T2E102KI.

INTERPUMP HYJACK

THE2J2K



APPLICATIONS :



APPLICABLE SPECIFICATIONS

IMM Specs

Tested for jack applications up to a static pressure of 760 bar/11000 psi. Compact version. Safety factor > 2: 1. Smooth cover. Tested and released with dedicated fitting (002M bushing + Multispiral couplings).

Inner tube: Oil resistant synthetic rubber.

Reinforcement: 2 high-load steel wire braids.

Coverage: Synthetic rubber resistant to oils, fuels, atmospheric conditions and abrasion.

Recommended fluids: Mineral and biological oils.

working temperature: from -40 to +100°C.

Product number	ID		Dimension	OD	Max WP		Min BP		Min BR		Weight (approx)		Ferrule
	in	mm	dash size		bar	psi	bar	psi	mm	inch	kg/m	lb/ft	
THE2J2K-04	1/4"	6.4	04	13.3	760	11000	1672	24200	75	2.953	0.281	0.189	002M-04
THE2J2K-06	3/8"	9.5	06	17.1	725	10500	1595	23100	90	3.543	0.422	0.284	002M-06

Marking: Available only "mylar"

INTERPUMP HyRail

APPLICATIONS :



TFDE011



APPROVALS :

ISO 11925, EN 45545-2

APPLICABLE SPECIFICATIONS

IMM - SAE 100R1AT - EN 853 1SN - ISO 1436

Pressure, dimensions and bend radius ratings in accordance with EN 853 1SN, ISO 1436 1SN and SAE 100R1AT. Fire Retardant Cover. For air or gas application hose cover pin-prieked.

Inner tube: Synthetic rubber, extruded whole without joints, of uniform thickness.

Reinforcement: 1 steel wire braid.

Coverage: Synthetic rubber fire resistant

Recommended fluids: Mineral and biological oils, water, water based fluids, compressed air.

working temperature: from -40 to +100°C (intermittent 120°C) for oils, from -40 to 70°C for water based fluids and compressed air, from 0 to +70°C for water,.

Product number	ID		Dimension dash size	OD	Max WP		Min BP		Min BR		Weight (approx)		Ferrule
	in	mm			bar	psi	bar	psi	mm	inch	kg/m	lb/ft	
TFDE011-04	1/4"	6.4	04	13.4	225	3263	900	13050	100	3.937	0.231	0.155	001C-04
TFDE011-05	5/16"	8	05	15	215	3118	860	12470	115	4.528	0.254	0.171	001C-05
TFDE011-06	3/8"	9.5	06	17.4	180	2610	720	10440	125	4.921	0.338	0.227	001C-06
TFDE011-08	1/2"	12.7	08	20.6	160	2320	640	9280	180	7.087	0.415	0.279	001C-08
TFDE011-10	5/8"	16	10	23.7	130	1885	520	7540	200	7.874	0.477	0.321	001C-10
TFDE011-12	3/4"	19	12	27.7	105	1523	420	6090	240	9.449	0.618	0.415	001C-12
TFDE011-16	1"	25.4	16	35.6	88	1276	352	5104	300	11.811	0.901	0.605	001C-16

Marking: Available also embossed brand version. In case of order use TFDE011N.

INTERPUMP HyGEAR 1SC

THEOG1K



APPLICABLE SPECIFICATIONS

EXCEED EN 857 1SC, ISO 11237 1SC

NO-SKIVE tube. High abrasion resistance. Easy assembly. Suitable for the use with the "GearBox" and "ATF" oils. Exceeds EN 853 impulse test requirements.

Inner tube: Synthetic rubber, extruded whole without joints, of uniform thickness.

Reinforcement: 1 high tensile steel wire braids.

Coverage: Anti-abrasive synthetic rubber, resistant to oils, fuels and atmospheric conditions.

Recommended fluids: Mineral and biological oils, glycol-water based, water, lubricants.

working temperature: from -40 to +100°C from -40 to +70° C for water based fluids, from 0 to +70°C water.

Product number	ID		Dimension dash size	OD	Max WP		Min BP		Min BR		Weight (approx)		Ferrule
	in	mm			bar	psi	bar	psi	mm	inch	kg/m	lb/ft	
THEOG1K-12	3/4"	19	12	26.0	105	1523	420	6090	120	4.724	0.546	0.367	001C-12
THEOG1K-16	1"	25.4	16	33.7	88	1276	352	5104	150	5.906	0.759	0.510	001C-16
THEOG1K-20	1.1/4"	31.8	20	41.1	82	1189	328	4756	210	8.268	1.11	0.746	001C-20
THEOG1K-24	1.1/2"	38.1	24	48.6	82	1190	328	4756	250	9.842	1.319	0.886	001C-24
THEOG1K-32	2"	50.8	32	61.5	68	986	272	3944	315	12.402	1.767	1.187	001C-32
THEOG1K-40	2.1/2"	63.5	40	73.5	35	508	140	2030	500	19.685	2.108	1.417	001C-40

Marking: Disponibile anche con marcatura a rilievo. In caso di ordine, usare il codice THEOG1KN.

INTERPUMP HyTruck 200 bar

APPLICATIONS :



TTRK200



APPLICABLE SPECIFICATIONS

IMM Specs

NO-SKIVE hose. A line dedicated to tipper applications. Safety factor 2,5:1.

Inner tube: Synthetic rubber, extruded whole without joints, of uniform thickness oil and water resistant.

Reinforcement: 1 braid (DN19) or 2 braids (DN25) made of high tensile steel wire.

Coverage: Synthetic rubber resistant to oils, fuels and atmospheric conditions.

Recommended fluids: Mineral and biological oils, glycol-water based, water, lubricants.

working temperature: from -40 to +100°C (intermittent 125°). from -40 to +70° C for water based fluids, from 0 to +70°C water.

Product number	ID		Dimension	OD	Max WP		Min BP		Min BR		Weight (approx)		Ferrule
	in	mm	dash size		bar	psi	bar	psi	mm	inch	kg/m	lb/ft	
TTRK200-12	3/4"	19	12	26	200	2900	500	7250	180	7.087	0.492	0.33	001C-12
TTRK200-16	1"	25.4	16	35.8	200	2900	500	7250	250	9.843	1.171	0.787	001C-16

Marking: Available only "mylar"



INTERPUMP HyTruck 250 bar

TTRK250



APPLICATIONS :



APPLICABLE SPECIFICATIONS

IMM Specs

NO-SKIVE hose. A line dedicated to tipper applications. Safety factor 2,5:1.

Inner tube: Synthetic rubber, extruded whole without joints, of uniform thickness oil and water resistant.

Reinforcement: 1 braid (DN19) or 2 braids (DN25) made of high tensile steel wire.

Coverage: Synthetic rubber resistant to oils, fuels and atmospheric conditions.

Recommended fluids: Mineral and biological oils, glycol-water based, water, lubricants.

working temperature: from -40 to +100°C (intermittent 125°), from -40 to +70° C for water based fluids, from 0 to +70°C water.

Product number	ID		Dimension dash size	OD	Max WP		Min BP		Min BR		Weight (approx)		Ferrule
	in	mm			bar	psi	bar	psi	mm	inch	kg/m	lb/ft	
TTRK250-12	3/4"	19	12	26	250	3625	625	9063	180	7.087	0.534	0.359	001C-12
TTRK250-16	1"	25.4	16	35.8	250	3625	625	9063	250	9.843	1.171	0.787	001C-16

Marking: Available only "mylar"

INTERPUMP HyTruck 350 bar

APPLICATIONS :



TTRK350



APPLICABLE SPECIFICATIONS

IMM Specs

NO-SKIVE hose. A line dedicated to tipper applications. Safety factor 2,5:1.

Inner tube: Synthetic rubber, extruded whole without joints, of uniform thickness oil and water resistant.

Reinforcement: 2 high tensile steel wire braids.

Coverage: Synthetic rubber resistant to oils, fuels and atmospheric conditions.

Recommended fluids: Mineral and biological oils, glycol-water based, water, lubricants.

working temperature: from -40 to +100°C (intermittent 125°), from -40 to +70° C for water based fluids, from 0 to +70°C water.

Product number	ID		Dimension dash size	OD	Max WP		Min BP		Min BR		Weight (approx)		Ferrule
	in	mm			bar	psi	bar	psi	mm	inch	kg/m	lb/ft	
TTRK350-12	3/4"	19	12	26	350	5075	875	12688	200	7.874	0.782	0.525	001C-12
TTRK350-16	1"	25.4	16	35.8	350	5075	875	12688	250	9.843	1.171	0.787	001C-16

Marking: Available only "mylar"

INTERPUMP HySpir 500

THD0500



APPLICABLE SPECIFICATIONS

IMM Specs, exceeds SAE 100R15

4 Spirals compact hose, WP 500 bar, Impulse tested iaw ISO 6803, Hydrostatic Transmission Application oriented.

Inner tube: Synthetic rubber, extruded whole without joints, of uniform thickness.

Reinforcement: 4 steel wire spirals.

Coverage: Anti-abrasive synthetic rubber, resistant to oils, fuels and atmospheric conditions.

Recommended fluids: Biological and mineral oils, glycol-water based, water, lubricants.

working temperature: from -40 to +100°C, from -40 to +70° C for water based fluids, from 0 to +70°C water.

Product number	ID		Dimension dash size	OD	Max WP		Min BP		Min BR		Weight (approx)		Ferrule
	mm	in			bar	psi	bar	psi	mm	inch	lb/ft	kg/m	
THD0500-12	19	3/4"	12	32	500	7250	2000	29000	210	8.3	1.06	1.572	004N-12
THD0500-16	25.4	1"	16	40	500	7250	2000	29000	250	9.8	1.59	2.350	00J4-16
THD0500-20	31.8	1.1/4"	20	49.5	500	7250	2000	29000	380	14.9	2.6	3.848	0042-20

HyTRAKTION

APPLICATIONS :



TSG0042



APPLICABLE SPECIFICATIONS

EXCEED SAE 100R15 - ISO 3862

High Tensile Resistance. Hose developed and qualified for combined high pulling force and high pressure application. Impulse Tested as per ISO 3862. High ozone, abrasion and severe ambient conditions resistance.

Inner tube: Synthetic rubber, extruded whole without joints, of uniform thickness.

Reinforcement: 6 steel wire spirals.

Coverage: Anti-abrasive synthetic rubber, resistant to oils, fuels and atmospheric conditions.

Recommended fluids: Mineral and biological oils, glycol-water based, water, lubricants, compressed air

working temperature: from -40 to + 121° C (Intermittent 125°C) from -40 to +70° C for water based fluids, from 0 to +70°C water.

Product number	ID		Dimension	OD	Max WP		Min BP		Min BR		Weight (approx)		Ferrule
	in	mm	dash size		bar	psi	bar	psi	mm	inch	kg/m	lb/ft	
TSG0042-20	1.1/4"	31.8	20	49.6	420	6090	1680	24360	350	13.780	3.700	2.486	0042-20
TSG0042-24	1.1/2"	38	24	56.4	420	6090	1680	24360	400	15.784	4.450	2.990	0042-24



INTERPUMP Mega Jet

THS00JG



APPLICATIONS :



APPLICABLE SPECIFICATIONS

IMM - ISO 7751

High performance structure. High ozone and weather conditions resistance. Safety factor 3,5:1 according to ISO 7751.

Inner tube: Synthetic rubber, extruded whole without joints, of uniform thickness, abrasion resistant.

Reinforcement: 6 high tensile steel wire spirals.

Coverage: Anti-abrasive syntetic rubber, resistant to oils, fuels and atmospheric conditions.

Recommended fluids: Water, water-soap based, water grout based.

working temperature: from -40 to +100°C, from -40 to +70° C for water based fluids, from 0 to +70°C water.

Product number	ID		Dimension dash size	OD	Max WP		Min BP		Min BR		Weight (approx)		Ferrule	SAFETY FACTOR	N SPIR
	in	mm			bar	psi	bar	psi	mm	inch	kg/m	lb/ft			
THS00JGN16	1"	25.4	16	42.2	600	8700	2100	30450	330	12.992	3.200	2.151	00J6-16	3.5:1	6
THS00JGN20	1.1/4"	31.8	20	49.7	550	7975	1925	27913	265	10.433	3.891	2.615	0013-20	3.5:1	6
THS00JGN24	1.1/2"	38.1	24	57.8	500	7250	1750	25375	310	12.205	5.182	3.483	0013-24	3.5:1	6
THS00JGN32	2"	50.8	32	71.5	480	6960	1680	24360	600	23.623	6.700	4.503	0013-32	3.5:1	6

Available with MSHA and Mega cover. In case of order use code THSM0JG and THSV0JG.

Marking: Available only "embossed"

INTERPUMP MEGADRILL

APPLICATIONS :



THEMMDR



APPROVALS :

MSHA

APPLICABLE SPECIFICATIONS

Exceeds ISO 3862 Type R13 - IMM Specs

High pressure hoses. Power lines/severe applications. Perforations.

Inner tube: Synthetic rubber, extruded whole without joints, of uniform thickness.

Reinforcement: 6 high tensile steel wire spirals.

Coverage: Abrasion resistant synthetic rubber resistant to oils, fuels, atmospheric conditions. MSHA.

Recommended fluids: Hydraulic fluids petroleum based (mineral oils), glycol-water based, water, lubricants.

working temperature: from -40 to +100°C (intermittent 120°C), from -40 to +70° C for water based fluids, from 0 to +70°C water.

Product number	ID		Dimension dash size	OD	Max WP		Min BP		Min BR		Weight (approx)		Ferrule
	mm	in			bar	psi	bar	psi	mm	inch	lb/ft	kg/m	
THEMMDRN40	63.5	2.1/2"	40	84.5	350	5000	1400	20300	900	35.430	5.492	8.173	0013-40
THEMMDRN48	76.2	3"	48	97.3	350 (*) / 210 (**)	5000 (*) / 3045 (**)	880	12760	1000	39.370	6.393	9.515	0013-48

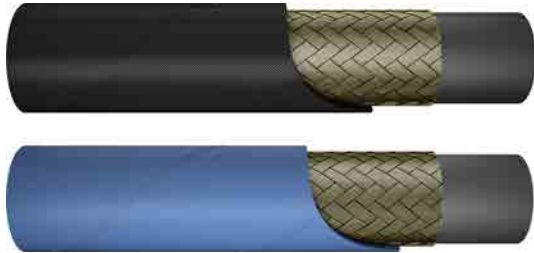
(**) - Dynamic Application Safety Factor > 4:1

(*) - Static Application

Marking: Available only "embossed"

INTERPUMP Jet 1SC

TFN001K TFB001K



APPLICATIONS :



APPLICABLE SPECIFICATIONS

EN 857 1SC - ISO 7751

Dimensions according to EN 857 1SC. NO-SKIVE flexible line. Safety factor exceeding ISO 7751. Product designed for pressure wash applications. Any different use may reduce service life.

Inner tube: Synthetic rubber, extruded whole without joints, of uniform thickness.

Reinforcement: 1 steel wire braid.

Coverage: Anti-abrasive synthetic rubber, resistant to oils, fuels and atmospheric conditions.

Recommended fluids: Water, water-soap based, glycol-water based.

working temperature: from -40 to +135°C (intermittent 155°C).

Product number	ID		Dimension dash size	OD	Max WP		Min BP		Min BR		Weight (approx)		Ferrule	Color Coverage
	in	mm			bar	psi	bar	psi	mm	inch	kg/m	lb/ft		
TFN001KN04	1/4"	6.4	04	12.3	250	3625	900	13050	75	2.953	0.182	0.122	001C-04	N
TFN001KN05	5/16"	8	05	14	250	3625	840	12180	85	3.346	0.203	0.136	001C-05	N
TFN001KN06	3/8"	9.5	06	15.6	250	3625	720	10440	90	3.543	0.256	0.172	001C-06	N
TFN001KN08	1/2"	12.7	08	18.7	250	3625	640	9280	130	5.118	0.341	0.229	001C-08	N
TFB001KN04	1/4"	6.4	04	12.3	250	3625	900	13050	75	2.953	0.182	0.122	001C-04	B
TFB001KN05	5/16"	8	05	14	250	3625	840	12180	85	3.346	0.203	0.136	001C-05	B
TFB001KN06	3/8"	9.5	06	15.6	250	3625	720	10440	90	3.543	0.256	0.172	001C-06	B
TFB001KN08	1/2"	12.7	08	18.7	250	3625	640	9280	130	5.118	0.341	0.229	001C-08	B

Marking: Available only embossed

INTERPUMP Jet 2SC

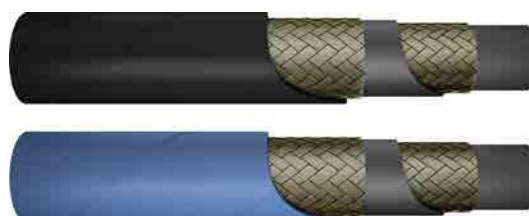
APPLICATIONS :



APPLICABLE SPECIFICATIONS

EN 857 2SC - ISO 7751

TFN002K TFB002K



Dimensions according to EN 857 2SC. NO-SKIVE flexible line. Safety factor exceeding ISO 7751. Product designed for pressure wash applications. Any different use may reduce service life.

Inner tube: Synthetic rubber, extruded whole without joints, of uniform thickness.

Reinforcement: 2 high tensile steel wire braids.

Coverage: Anti-abrasive synthetic rubber, resistant to oils, fuels and atmospheric conditions.

Recommended fluids: Water, water-soap based, glycol-water based.

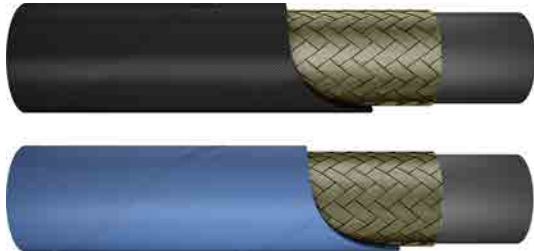
working temperature: from -40 to +135°C (intermittent 155°C).

Product number	ID		Dimension dash size	OD	Max WP		Min BP		Min BR		Weight (approx)		Ferrule	Color Coverage
	in	mm			bar	psi	bar	psi	mm	inch	kg/m	lb/ft		
TFN002KN04	1/4"	6.5	04	13.3	400	5800	1600	23200	75	2.953	0.281	0.189	001C-04	N
TFN002KN05	5/16"	8	05	14.8	400	5800	1400	20300	85	3.346	0.327	0.220	001C-05	N
TFN002KN06	3/8"	9.5	06	17.1	400	5800	1320	19140	90	3.543	0.418	0.281	001C-06	N
TFN002KN08	1/2"	12.7	08	20.4	400	5800	1100	15950	130	5.118	0.525	0.353	001C-08	N
TFB002KN04	1/4"	6.5	04	13.3	400	5800	1600	23200	75	2.953	0.281	0.189	001C-04	B
TFB002KN05	5/16"	8	05	14.8	400	5800	1400	20300	85	3.346	0.327	0.220	001C-05	B
TFB002KN06	3/8"	9.5	06	17.1	400	5800	1320	19140	90	3.543	0.418	0.281	001C-06	B
TFB002KN08	1/2"	12.7	08	20.4	400	5800	1100	15950	130	5.118	0.525	0.353	001C-08	B

Marking: Available only embossed

INTERPUMP HyWASHER 4K

TEBOE28 TENOE28



APPLICATIONS :



APPLICABLE SPECIFICATIONS

ISO 7751

Compact, light and flexible hose line with Safety factor exceeding ISO 7751. Product designed for pressure wash, water and steam cleaning and sanitization.

Inner tube: Synthetic rubber, extruded whole without joints, of uniform thickness.

Reinforcement: 1 high tensile steel wire braid.

Coverage: Synthetic rubber resistant to water, water base fluids, abrasion and atmospheric conditions.

Recommended fluids: Water, water-soap based, glycol-water based, steam and sanitizers.

working temperature: +155°C water, water base fluid. +163°C steam.

Product number	ID		OD	Max WP Hot Water bar	SAFETY FACTOR	Max WP Steam bar	Min BP bar	Min BR mm	Weight Kg/m	Ferrule	Color Coverage
	in	mm									
TEBOE28-04M005	1/4"	6.4	11.5	280	3	28	840	40	0.15	001L-04	B
TEBOE28-05M005	5/16"	8.0	13.1	280	3	28	840	50	0.16	001L-05	B
TEBOE28-06M005	3/8"	9.5	14.8	280	3	28	840	60	0.20	001L-06	B
TEBOE28-08M005	1/2"	12.7	17.1	280	2.5	28	700	70	0.29	001L-08	B
TENOE28-04M005	1/4"	6.4	11.5	280	3	28	840	40	0.15	001L-04	N
TENOE28-05M005	5/16"	8.0	13.1	280	3	28	840	50	0.16	001L-05	N
TENOE28-06M005	3/8"	9.5	14.8	280	3	28	840	60	0.20	001L-06	N
TENOE28-08M005	1/2"	12.7	17.1	280	2.5	28	700	70	0.29	001L-08	N

-Standard package: length multiple of 5m. with minimum length of 10m. - For steam use, pinprick the cover and use a anti kink system at the ends. - Cover with custom colours available on request.

INTERPUMP HyWASHER 6K

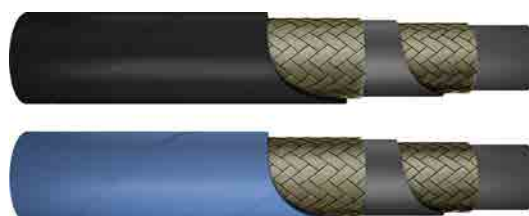
APPLICATIONS :



APPLICABLE SPECIFICATIONS

ISO 7751

TEBOE42 TENOE42



Compact, light and flexible hose line with Safety factor exceeding ISO 7751. Product designed for pressure wash, water and steam cleaning and sanitization.

Inner tube: Synthetic rubber, extruded whole without joints, of uniform thickness.

Reinforcement: 2 high-load steel wire braids.

Coverage: Synthetic rubber resistant to water, water base fluids, abrasion and atmospheric conditions.

Recommended fluids: Water, water-soap based, glycol-water based, steam and sanitizers.

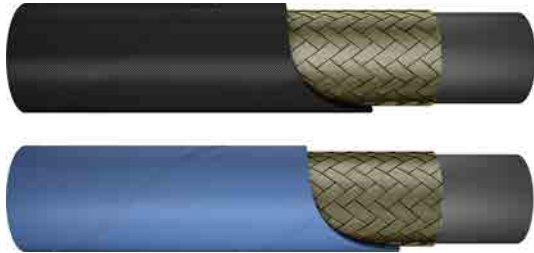
working temperature: +155°C water, water base fluid. +163°C steam.

Product number	ID		OD	Max WP Hot Water bar	SAFETY FACTOR	Max WP Steam bar	Min BP bar	Min BR mm	Weight Kg/m	Ferrule	Color Coverage
	in	mm									
TEBOE42-04M005	1/4"	6.4	13.3	420	4	28	1680	65	0.29	001C-04	B
TEBOE42-05M005	5/16"	8.0	14.8	420	3	28	1260	75	0.33	001C-05	B
TEBOE42-06M005	3/8"	9.5	17.1	420	3	28	1260	85	0.42	001C-06	B
TEBOE42-08M005	1/2"	12.7	20.4	420	3	28	1260	100	0.52	001C-08	B
TENOE42-04M005	1/4"	6.4	13.3	420	4	28	1680	65	0.29	001C-04	N
TENOE42-05M005	5/16"	8.0	14.8	420	3	28	1260	75	0.33	001C-05	N
TENOE42-06M005	3/8"	9.5	17.1	420	3	28	1260	85	0.42	001C-06	N
TENOE42-08M005	1/2"	12.7	20.4	420	3	28	1260	100	0.52	001C-08	N

-Standard package: length multiple of 5m. with minimum length of 10m. - For steam use, pinprick the cover and use a anti kink system at the ends. - Cover with custom colours available on request.

INTERPUMP HyWASHER PLUS 4K

TCB2E28 TCN2E28



APPLICATIONS :



APPLICABLE SPECIFICATIONS

ISO 7751

Compact, light and flexible hose line with Safety factor exceeding ISO 7751. Product designed for pressure wash, water and steam cleaning and sanitization.

Inner tube: Synthetic rubber, extruded whole without joints, of uniform thickness.

Reinforcement: 1 high tensile steel wire braid.

Coverage: Anti-abrasive synthetic rubber, resistant to oils and animal fat, water, water base fluids and atmospheric conditions.

Recommended fluids: Water, water-soap based, glycol-water based, steam and sanitizers.

working temperature: +155°C water, water base fluid. +163°C steam.

Product number	ID		OD	Max WP Hot Water bar	SAFETY FACTOR	Max WP Steam bar	Min BP bar	Min BR mm	Weight Kg/m	Ferrule	Color Coverage
	in	mm									
TCB2E28-04M005	1/4"	6.4	11.5	280	3	28	840	40	0.15	001L-04	B
TCB2E28-05M005	5/16"	8.0	13.1	280	3	28	840	50	0.16	001L-05	B
TCB2E28-06M005	3/8"	9.5	14.8	280	3	28	840	60	0.20	001L-06	B
TCB2E28-08M005	1/2"	12.7	17.1	280	2.5	28	700	70	0.29	001L-08	B
TCN2E28-04M005	1/4"	6.4	11.5	280	3	28	840	40	0.15	001L-04	N
TCN2E28-05M005	5/16"	8.0	13.1	280	3	28	840	50	0.16	001L-05	N
TCN2E28-06M005	3/8"	9.5	14.8	280	3	28	840	60	0.20	001L-06	N
TCN2E28-08M005	1/2"	12.7	17.1	280	2.5	28	700	70	0.29	001L-08	N

-Standard package: length multiple of 5m. with minimum length of 10m. - For steam use, pinprick the cover and use a anti kink system at the ends. - Cover with custom colours available on request.

INTERPUMP HyWASHER PLUS 6K

APPLICATIONS :



APPLICABLE SPECIFICATIONS

ISO 7751

TCB2E42 TCN2E42



Compact, light and flexible hose line with Safety factor exceeding ISO 7751. Product designed for pressure wash, water and steam cleaning and sanitization.

Inner tube: Synthetic rubber, extruded whole without joints, of uniform thickness.

Reinforcement: 2 high-load steel wire braids.

Coverage: Anti-abrasive synthetic rubber, resistant to oils and animal fat, water, water base fluids and atmospheric conditions.

Recommended fluids: Water, water-soap based, glycol-water based, steam and sanitizers.

working temperature: +155°C water, water base fluid. +163°C steam.

Product number	ID		OD	Max WP Hot Water bar	SAFETY FACTOR	Max WP Steam bar	Min BP bar	Min BR mm	Weight Kg/m	Ferrule	Color Coverage
	in	mm									
TCB2E42-04M005	1/4"	6.4	13.3	420	4	28	1680	65	0.29	001C-04	B
TCB2E42-05M005	5/16"	8.0	14.8	420	3	28	1260	75	0.33	001C-05	B
TCB2E42-06M005	3/8"	9.5	17.1	420	3	28	1260	85	0.42	001C-06	B
TCB2E42-08M005	1/2"	12.7	20.4	420	3	28	1260	100	0.52	001C-08	B
TCN2E42-04M005	1/4"	6.4	13.3	420	4	28	1680	65	0.29	001C-04	N
TCN2E42-05M005	5/16"	8.0	14.8	420	3	28	1260	75	0.33	001C-05	N
TCN2E42-06M005	3/8"	9.5	17.1	420	3	28	1260	85	0.42	001C-06	N
TCN2E42-08M005	1/2"	12.7	20.4	420	3	28	1260	100	0.52	001C-08	N

-Standard package: length multiple of 5m. with minimum length of 10m. - For steam use, pinprick the cover and use a anti kink system at the ends. - Cover with custom colours available on request.



INTERPUMP Hyblast 10k

TFW0070



APPLICATIONS :



APPLICABLE SPECIFICATIONS

IMM SPEC. - ISO 7751

Safety factor 2,5:1. Light and compact. ISO 7751.

Inner tube: Water resistant synthetic rubber.

Reinforcement: 4 steel wire spirals.

Coverage: Anti-abrasive syntetic rubber, resistant to oils, fuels and atmospheric conditions.

Recommended fluids: Water, water-soap based, glicol-water based.

working temperature: from -10 to +70°C, Max 100°C.

Product number	ID		Dimension	OD	Max WP		Min BP		Min BR		Weight (approx)		Ferrule	Coupling
	mm	in	dash size		bar	psi	bar	psi	mm	inch	kg/m	lb/ft		Series
TFW0070-16	25.4	1"	16	38.8	700	10150	1750	25375	280	11.024	2.100	1.413	00Y4-16	Y series

Marking: Available also embossed brand version. In case of order use code TFW0070N.

ih INTERPUMP **HY-BLAST** → 10k ISO 7751/S.F. 2,5 - DN 25 I.D. 1" - W.P. 700 BAR/10150 PSI

INTERPUMP Hyblast 12k

APPLICATIONS :



TFW0085



APPLICABLE SPECIFICATIONS

IMM SPEC. - ISO 7751

Safety factor 2,5:1. Light and compact. ISO 7751. Reliability and high performances.

Inner tube: Water resistant synthetic rubber.

Reinforcement: 4-6 high tensile steel wire spiral.

Coverage: Anti-abrasive syntetic rubber, resistant to oils, fuels and atmospheric conditions.

Recommended fluids: Water, water-soap based, glicol-water based.

working temperature: from -10 to +70°C, Max 100°C.

Product number	ID		Dimension dash size	OD	Max WP		Min BP		Min BR		Weight (approx)		Ferrule	N	Coupling	
	in	mm			bar	psi	bar	psi	mm	inch	kg/m	lb/ft			SPIR	Series
TFW0085-04	1/4"	6.4	04	17	850	12325	2125	30813	110	4.331	0.570	0.384	0019-04	4	M series	
TFW0085-06	3/8"	9.5	06	19.8	850	12325	2125	30813	140	5.512	0.730	0.491	00Y4-06	4	Y series	
TFW0085-08	1/2"	12.7	08	22.5	850	12325	2125	30813	170	6.693	0.840	0.565	00Y4-08	4	Y series	
TFW0085-12	3/4"	19	12	31.2	850	12325	2125	30813	220	8.661	1.690	1.137	00Y4-12	4	Y series	
TFW0085-16	1"	25.4	16	42.2	850	12325	2125	30813	330	12.992	3.200	2.150	00Y6-16	6	Y series	

Marking: Available also embossed brand version. In case of order use TFW0085N.



INTERPUMP Hyblast 15k

TFW0110 TFW0100



APPLICATIONS :



APPLICABLE SPECIFICATIONS

IMM SPEC. - ISO 7751

Safety factor 2,5:1. Light and compact. ISO 7751. Reliability and high performances.

Inner tube: Water resistant synthetic rubber.

Reinforcement: 4 steel wire spirals.

Coverage: Anti-abrasive syntetic rubber, resistant to oils, fuels and atmospheric conditions.

Recommended fluids: Water, water-soap based, glycol-water based.

working temperature: from -10 to +70°C, Max 100°C.

Product number	ID		Dimension dash size	OD	Max WP		Min BP		Min BR		Weight (approx)		Ferrule	Coupling Series
	mm	in			bar	psi	bar	psi	mm	inch	kg/m	lb/ft		
TFW0110-04	6.4	1/4"	04	17	1100	15950	2750	39875	110	4.331	0.570	0.384	0019-04	M series
TFW0110-06	9.5	3/8"	06	20.7	1100	15950	2750	39875	140	5.512	0.890	0.599	00Y4-06	Y series
TFW0110-08	12.7	1/2"	08	24	1100	15950	2750	39875	180	7.087	1.150	0.774	00Y4-08	Y series
TFW0100-12	19	3/4"	12	31.6	1000	14500	2500	36250	240	9.449	1.800	1.211	00Y4-12	Y series

Marking: Available also embossed brand version. In case of order use code TFW0110N.

ih INTERPUMP HY-BLAST 15k ISO 7751/S.F. 2,5 - DN 10 I.D. 3/8" - W.P. 1100 BAR/15950 PSI

INTERPUMP Hyblast 18k

APPLICATIONS :



TFW0125 TFW0120



APPLICABLE SPECIFICATIONS

IMM SPEC. - ISO 7751

Safety factor 2,5:1. Light and compact. ISO 7751. Reliability and high performances.

Inner tube: Water resistant synthetic rubber.

Reinforcement: 4 steel wire spirals.

Coverage: Anti-abrasive syntetic rubber, resistant to oils, fuels and atmospheric conditions.

Recommended fluids: Water, water-soap based, glycol-water based.

working temperature: from -10 to +70°C, Max 100°C.

Product number	ID		Dimension dash size	OD	Max WP		Min BP		Min BR		Weight (approx)		Ferrule	Coupling Series
	mm	in			bar	psi	bar	psi	mm	inch	kg/m	lb/ft		
TFW0125-06	9.5	3/8"	06	20.7	1250	18125	3125	45313	160	6.229	0.920	0.619	00Y4-06	Y series
TFW0120-08	12.7	1/2"	08	24	1200	17400	3000	43500	200	7.874	1.190	0.801	00Y4-08	Y series

Marking: Available also embossed brand version. In case of order use code TFW0125N.

INTERPUMP Hyblast 20k

TFW0145 TFW0135



APPLICATIONS :



APPLICABLE SPECIFICATIONS

IMM SPEC. - ISO 7751

Safety factor 2,5:1. Light and compact. ISO 7751. Reliability and high performances.

Inner tube: Water resistant synthetic rubber.

Reinforcement: 6 steel wire spirals.

Coverage: Anti-abrasive syntetic rubber, resistant to oils, fuels and atmospheric conditions.

Recommended fluids: Water, water-soap based, glycol-water based.

working temperature: from -10 to +70°C, Max 100°C.

Product number	ID		Dimension dash size	OD	Max WP		Min BP		Min BR		Weight (approx)		Ferrule	Coupling Series
	mm	in			bar	psi	bar	psi	mm	inch	kg/m	lb/ft		
TFW0145-06	9.5	3/8"	06	23.3	1450	21025	3625	52563	180	7.087	1.350	0.909	00Y6-06	Y series
TFW0145-08	12.7	1/2"	08	27	1450	21025	3625	52563	220	8.661	1.800	1.211	00Y6-08	Y series
TFW0135-12	19	3/4"	12	35	1350	19575	3375	48938	260	10.236	2.670	1.797	00Y6-12	Y series

Marking: Available also embossed brand version. In case of order use code TFW0145N.

Thermoplastic

in



TFS0007



SAE 100R7

73

TFS00H1



One high tensile steel wire braid

74

TFS00H2



Two high tensile steel wire braids

75



TFS0008



SAE 100R8

76



TFS0018



R18 Low temperature

77



TFS00HP



INTERPUMP HyUltra

78



TFS00MP



Mini-flexible

79

SAE 100R7

TFS0007

APPLICATIONS :



APPROVALS :

MSHA

APPLICABLE SPECIFICATIONS

Exceed SAE 100R7 - ISO 3949 R7

Exceeds SAE 100R7. Light and flexible, abrasion resistant. Limited change in length. Pinpricked cover.

Inner tube: Polyester elastomer.

Reinforcement: One or two braids of synthetic fiber.

Coverage: Polyurethane, black, pinpricked, white ink-jet branding.

Recommended fluids: Hydraulic fluids petroleum based, glycol-water based, lubricant.

working temperature: from -40 to +100°C continuous for air and water based fluids.

Product number	ID		Dimension	OD	Max WP		Min BP		Min BR		Weight (approx)		Ferrule
	in	mm	dash size		bar	psi	bar	psi	mm	inch	kg/m	lb/ft	
TFS0007-02	1/8"	4	02	8.3	210	3045	840	12180	25	0.984	0.050	0.034	*
TFS0007-03	3/16"	5	03	9.6	210	3045	840	12180	25	0.984	0.060	0.040	0007-03
TFS0007-04	1/4"	6.5	04	11.8	200	3045	840	12180	35	1.378	0.090	0.060	0007-04
TFS0007-05	5/16"	8.1	05	13.9	190	2755	760	11020	60	2.362	0.115	0.077	0007-05
TFS0007-06	3/8"	9.7	06	16	160	2320	640	9280	55	2.165	0.145	0.097	0007-06
TFS0007-08	1/2"	13	08	20.1	140	2030	560	8120	75	2.953	0.210	0.141	0007-08
TFS0007-10	5/8"	16.3	10	23.7	105	1522	420	6090	110	4.331	0.280	0.188	0007-10
TFS0007-12	3/4"	19.5	12	27.1	90	1305	360	5220	140	5.512	0.335	0.225	0007-12
TFS0007-16	1"	25.9	16	34	70	1015	280	4060	190	7.480	0.455	0.305	0007-16

Available also in twin version (in case of order use code T2S0007)

Available also in 'No conductive' version - (in case of order use code TFS0NC7)



Available also in 'Neptune' version - marine application (in case of order use code TFS00M7)



Available also in 'Nautilus' version - off-shore equipment (in case of order use code TFS00Y7)



Available also in 'Solvent' version - (in case of order use code TFS00V7)



One high tensile steel wire braid

TFS00H1



APPLICATIONS :



APPROVALS :

MSHA

APPLICABLE SPECIFICATIONS

SAE 100R1 - MEETS OR EXCEEDS PRESSURE LEVEL OF EN 853 1SN - EN 857 1SC

Slim line construction for compact installation and flexibility. Lightweight. Steel braid offers low volumetric expansion and optimum in length characteristics. Abrasion resistant.

Inner tube: Polyester elastomer.

Reinforcement: One braid of steel wire.

Coverage: Polyurethane, black, white ink-jet branding.

Recommended fluids: Hydraulic fluids petroleum based, glycol-water based, lubricant.

working temperature: from -40 to +100°C continuous for air and water based fluids.

Product number	ID		Dimension	OD	Max WP		Min BP		Min BR		Weight (approx)		Ferrule
	in	mm	dash size		bar	psi	bar	psi	mm	inch	kg/m	lb/ft	
TFS00H1-03	3/16"	5	03	9.7	360	5220	1440	20880	30	1.181	0.120	0.081	0008-03
TFS00H1-04	1/4"	6.4	04	11.7	310	4495	1240	17980	40	1.575	0.165	0.111	0008-04
TFS00H1-05	5/16"	8.1	05	13.2	250	3625	1000	14500	55	2.165	0.190	0.128	0008-05
TFS00H1-06	3/8"	9.8	06	15.5	225	3263	900	13050	65	2.559	0.230	0.155	0008-06
TFS00H1-08	1/2"	13	08	18.8	190	2755	760	11020	85	3.346	0.300	0.202	0008-08
TFS00H1-10	5/8"	16.3	10	22	140	2030	560	8120	115	4.528	0.335	0.225	0008-10
TFS00H1-12	3/4"	19.5	12	25.8	115	1668	460	6670	145	5.709	0.460	0.309	0008-12
TFS00H1-16	1"	25.8	16	33.4	95	1378	380	5510	180	7.087	0.640	0.430	0008-16



Available also in "Neptune" version - marine application (in case of order use code TFS0H1M). NO MSHA.



Available also in 'Solvent' version (in case of order use code TFS00V1). NO MSHA.



Available also in twin version (in case of order use code T2S00H1)



Two high tensile steel wire braids

APPLICATIONS :



TFS00H2



APPROVALS :

MSHA

APPLICABLE SPECIFICATIONS

MEETS OR EXCEEDS SAE 100R2 PERFORMANCE

Rugged construction for HD application and prolonged lifetime. Suitable in harsh condition. Abrasion resistant.

Inner tube: Polyester elastomer.

Reinforcement: Two braid of steel wire.

Coverage: Polyurethane, black, white ink-jet branding.

Recommended fluids: Hydraulic fluids petroleum based, glycol-water based, lubricant.

working temperature: from -40 to +100°C continuous for air and water based fluids.

Product number	ID		Dimension	OD	Max WP		Min BP		Min BR		Weight (approx)		Ferrule
	in	mm	dash size		bar	psi	bar	psi	mm	inch	kg/m	lb/ft	
TFS00H2-04	1/4"	6.4	04	12.8	400	5800	1600	23200	40	1.575	0.245	0.165	0022-04
TFS00H2-06	3/8"	9.8	06	16.8	330	4785	1320	19140	65	2.559	0.37	0.249	0022-06
TFS00H2-08	1/2"	13	08	20.2	260	3770	1040	15080	85	3.346	0.455	0.306	0022-08
TFS00H2-10	5/8"	16.3	10	23.5	220	3190	880	12760	115	4.528	0.56	0.376	0022-10
TFS00H2-12	3/4"	19.5	12	27.5	150	2175	660	9570	170	6.693	0.7	0.470	0022-12

Available also in twin version (in case of order use code T2S00H2).



Available also in 'Solvent' version (in case of order use code TFS00V2). NO MSHA.



SAE 100R8

TFS0008



APPLICATIONS :



APPROVALS :

MSHA

APPLICABLE SPECIFICATIONS

Exceed SAE 100R8 - ISO 3949 R8

Exceeds SAE 100R8. Light and flexible, abrasion resistant. Limited change in length. Pinpricked cover.

Inner tube: Polyester elastomer.

Reinforcement: One or two braids of aramid fiber.

Coverage: Polyurethane, black, pinpricked, white ink-jet branding.

Recommended fluids: Hydraulic fluids petroleum based, glycol-water based, lubricant.

working temperature: from -40 to +100°C continuous for air and water based fluids.

Product number	ID		Dimension	OD	Max WP		Min BP		Min BR		Weight (approx)		Ferrule
	in	mm	dash size		bar	psi	bar	psi	mm	inch	kg/m	lb/ft	
TFS0008-02	1/8"	4	02	8	420	6090	1680	24360	25	0.984	0.045	0.03	0008-02
TFS0008-03	3/16"	5	03	8.9	350	5075	1400	20300	30	1.181	0.050	0.034	0008-03
TFS0008-04	1/4"	6.5	04	11.5	350	5075	1400	20300	50	1.968	0.085	0.057	0008-04
TFS0008-05	5/16"	8.1	05	13.4	300	4350	1200	17400	55	2.165	0.105	0.071	0008-05
TFS0008-06	3/8"	9.7	06	15.5	280	4060	1120	16240	60	2.362	0.135	0.091	0008-06
TFS0008-08	1/2"	13	08	19.9	245	3552	980	14210	80	3.15	0.2	0.134	0008-08
TFS0008-10	5/8"	16.3	10	23.4	200	2900	800	11600	125	4.921	0.25	0.168	0008-10
TFS0008-12	3/4"	19.5	12	27.1	165	2392	660	9570	150	5.906	0.32	0.215	0008-12
TFS0008-16	1"	25.9	16	34.2	140	2030	560	8120	200	7.874	0.435	0.292	0008-16

Available also in twin version (in case of order use code T2S0008).



Available also in 'Nautilus' version - off-shore equipment (in case of order use code TFS00Y8).



Available also in 'Neptune' version - marine application (in case of order use code TFS00M7).



Available also in 'Solvent' version (in case of order use code TFS00V8).



Available also in 'No conductive' version (in case of order use code TFS0NC8).



R18 Low temperature

APPLICATIONS :



TFS0018



APPLICABLE SPECIFICATIONS

Meets or exceeds SAE 100R18

Optimum bonding. Special polyester cover operating in cold environment. Tight bend radius. Microperforated covering.

Inner tube: Polyester elastomer.

Reinforcement: One or two braids of synthetic fiber.

Coverage: Special polyester.

Recommended fluids: Hydraulic fluids petroleum based, glycol-water based, lubricant.

working temperature: from -55 to +100°C continuous for air and water based fluids.

Product number	ID		Dimension dash size	OD	Max WP		Min BP		Min BR		Weight (approx)		Ferrule
	in	mm			bar	psi	bar	psi	mm	inch	kg/m	lb/ft	
TFS0018-03	3/16"	5	03	9.6	210	3045	840	12180	25	0.984	0.060	0.040	0008-03
TFS0018-04	1/4"	6.5	04	12.2	210	3045	840	12180	35	1.378	0.095	0.064	0008-04
TFS0018-05	5/16"	8.1	05	14.3	210	3045	840	12180	45	1.772	0.130	0.087	0008-05
TFS0018-06	3/8"	9.7	06	16.6	210	3045	840	12180	45	1.772	0.165	0.111	0008-06
TFS0018-08	1/2"	13	08	22.5	210	3045	840	12180	70	2.756	0.295	0.198	*
TFS0018-10	5/8"	16.3	10	26.1	210	3045	840	12180	100	3.937	0.370	0.249	*

Available also in twin version (in case of order use code T2S0018).





INTERPUMP HyUltra

TFS00HP



APPLICATIONS :



APPROVALS :

MSHA

APPLICABLE SPECIFICATIONS

Combined Aramid + Steel braid construction for compact design. Lightweight and flexible. Narrow bending radius for use on hose reels and in tight environments. Antiabrasion cover.

Inner tube: Polyester elastomer.

Reinforcement: One or two braid of aramid fiber plus one steel braid.

Coverage: Polyurethane, black, white ink-jet branding.

Recommended fluids: Hydraulic fluids petroleum based, glycol-water based, lubricant.

working temperature: from -40 to +100°C continuous for air and water based fluids.

Product number	ID		Dimension dash size	OD	Max WP		Min BP		Min BR		Weight (approx)		Ferrule
	in	mm			bar	psi	bar	psi	mm	inch	kg/m	lb/ft	
TFS00HP-04	1/4"	6.6	04	12.7	700	10150	2800	40600	35	1.377	0.180	0.121	002M-04
TFS00HP-06	3/8"	9.8	06	18.7	700	10150	2800	40600	90	3.543	0.330	0.222	*

Available also in twin version (in case of order use code T2S00HP).

Available also in 'No conductive' version (in case of order use code TFSNCHP). NO MSHA.



Mini-flexible

TFS00MP

APPLICATIONS :



Very flexible and lightweight. Kink resistance. Antistick cover allow use of hose bundles for easy routing. Nipples fittings range.

Inner tube: Polyester elastomer.

Reinforcement: One braid of aramid fiber.

Coverage: Antigrip polyurethane, black, pinpricked.

Recommended fluids: Hydraulic fluids petroleum based, glycol-water based, lubricant.

working temperature: from -40 to +100°C continuous for air and water based fluids.

Product number	ID		Dimension dash size	OD	Max WP		Min BP		Min BR		Weight (approx)		Ferrule
	in	mm			bar	psi	bar	psi	mm	inch	kg/m	lb/ft	
TFS00MP-012	5/64"	2.0	02	5.0	630	9135	1900	27550	20	0.787	0.02	0.013	*
TFS00MP-020	1/8"	3.0	03	6.0	630	9135	1900	27550	30	1.181	0.025	0.017	*
TFS00MP-025	5/32"	4.0	04	8.0	630	9135	1900	27550	40	1.575	0.045	0.030	*

Available also in twin version (in case of order use code T2S00MP).



PTFE

ink



TF000T1



P.T.F.E. - T1

82

TF00LTC



P.T.F.E. - LTC

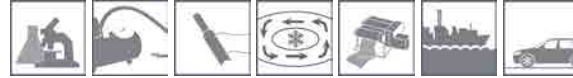
83

P.T.F.E. - T1

TF000T1



APPLICATIONS :



APPLICABLE SPECIFICATIONS

SAE 100 R14

Hose for use with IMM Hydraulics fittings. Standard tail.

Inner tube: Smooth P.T.F.E. thin wall.

Reinforcement:

Coverage: 1 high tensile stainless steel AISI 304 wire braids

Recommended fluids:

working temperature: from -70 to +260°C.

Product number	ID			Wall thickness mm	OD	Max WP (23°C)		Min BP (23°C)		Min BR		Ferrule
	in	mm	Dash			bar (*)	psi	bar	psi	mm	inch	
TF000T1-03	3/16"	4.8	03	0,7	7.4	200	2900	800	11600	35	1.377	PTFE-03
TF000T1-04	1/4"	6.35	04	0,7	9	175	2538	700	10150	45	1.771	PTFE-04
TF000T1-05	5/16"	7.9	05	0,7	10.8	150	2175	600	8700	50	1.968	PTFE-05
TF000T1-06	3/8"	9.5	06	0,7	12.4	135	1958	540	7830	55	2.165	PTFE-06
TF000T1-08	1/2"	12.7	08	0,7	15.7	120	1740	480	6960	70	2.755	PTFE-08
TF000T1-10	5/8"	15.9	10	0,8	19.1	100	1450	400	5800	130	5.118	PTFE-10
TF000T1-12	3/4"	19	12	0,8	22.2	90	1305	360	5220	190	7.480	PTFE-12
TF000T1-16	1"	25.4	16	1	29.7	65	943	260	3770	270	10.629	PTFE-16

For temperature over 100°C, please contact our technical department

P.T.F.E. - LTC

TF00LTC

APPLICATIONS :



APPLICABLE SPECIFICATIONS

Hose for use with IMM Hydraulics fittings. Standard tail.

Inner tube: Convoluted P.T.F.E. core.
Reinforcement:
Coverage: 1 high tensile stainless steel AISI 304 wire braids
Recommended fluids:
working temperature: from -70 to +260°C.

Product number	ID		ID Min	Wall thickness	Dimension	Max WP (23°C)		Min BR		Weight (approx)		Ferrule
	in	mm				mm	mm	OD	bar (*)	psi	mm	
TF00LTC-06	3/8"	9.5	06	0.9	15.5	125	1813	20	0.787	0.069	102	PTFE-06-C
TF00LTC-08	1/2"	12.7	08	0.9	18.5	110	1595	25	0.984	0.081	121	PTFE-08-C
TF00LTC-10	5/8"	15.9	10	0.9	22.5	80	1160	50	1.969	0.091	136	PTFE-10-C
TF00LTC-12	3/4"	19	12	0.9	26.7	70	1015	65	2.559	0.153	228	PTFE-12-C
TF00LTC-16	1"	25.4	16	1.1	33.7	50	725	90	3.543	0.189	281	PTFE-16-C
TF00LTC-20	1 1/4"	31.8	20	1.02	40.7	34	493	127	5.000	0.233	347	PTFE-20-C
TF00LTC-24	1 1/2"	38.1	24	1.12	48.3	30	435	152	5.984	0.318	473	PTFE-24-C
TF00LTC-32	2"	50.8	32	1.2	61.5	23	334	200	7.874	0.369	549	PTFE-32-C

(*) - For temperature over 100C° and ferrule, please contact our technical department

Accessories

in!

**Armour Guard
Spirali**

SPMP



Wire Guard

91

SPMW



Armour Guard

91

SAPB



Armour Guard Black "Basic"

92

SKPB



Armour Guard Black
"Endurance"

93

**Handle
Manopole**

MANB



Handle (Blue)

94

MANN



Handle (Black)

94

**Sleeve and Cap
Calze e capsule**

TPRS



Protective textile stockings

95

CFVS



Glass fiber knitted sleeve

96

CTA



Heat shrink PVC caps

97

**Heat machine
Forrelli**

HSMA1



Manual
without
bss

HSMA2



Manual
with bss

HSMB1



Table
mounted

**Plugs
Tappi**



Protection plugs

99



Protection plugs

100



Protection plugs for SAE 3000 flanges

101



Protection plugs for SAE 6000 flanges

101

**Bonded
Rondella**

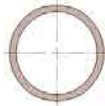
RM00



Metric copper washer

102

RG00



BSP copper washer

102

RBMA



Metric Self-centering Bonded Seal

103

RBGA



BSP Self-centering Bonded Seal

103

**Seal
Guarnizioni**

8GE



Seals for adaptors and fittings

104

**Box O-Ring
Valigie O-Ring**

BOXG - BS - 70



O-Ring NBR70 shore british standard

112

BOXH-MS-70



O-Ring NBR70 shore Metric Standard

112

**Bonded Seals
kit**

BOXBG



BSP - Self-centering bonded seal kit

113

Hoses cleaning
Pulizia tubi

PSPT-PU



Standard projectiles

114

PSPT06-50



Classic cleaner gun

114

PSPT-UU



Thermoplastic hose nozzle

115

PSPT-UU STEEL



Galvanized hose nozzle

115

PSPT06-50 KIT



Hose cleaning set

116

SPMP

Armour Guard

Spirale Metallica Piatta



Part number		
	ID	Lenght
SPMP-13	13	4 MT.
SPMP-15	15	4 MT.
SPMP-16	16	4 MT.
SPMP-17	17	4 MT.
SPMP-18	18	4 MT.
SPMP-20	20	4 MT.
SPMP-22	22	4 MT.
SPMP-24	24	4 MT.
SPMP-26	26	4 MT.
SPMP-28	28	4 MT.
SPMP-30	30	4 MT.
SPMP-32	32	4 MT.
SPMP-34	34	4 MT.
SPMP-38	38	4 MT.
SPMP-40	40	4 MT.
SPMP-42	42	4 MT.
SPMP-47	47	4 MT.
SPMP-49	49	3MT.
SPMP-52	52	2MT.
SPMP-54	54	1,5 MT.
SPMP-60	60	1,5MT.
SPMP-68	68	1MT.
SPMP-72	72	1MT.

SPMW

Wire Guard

Spirale Metallica Tonda



Part number		wire	
	ID		Lenght
SPMW-13	13	2	4 MT.
SPMW-15	15	2	4 MT.
SPMW-16	16	2	4 MT.
SPMW-18	18	2	4 MT.
SPMW-20	20	2	4 MT.
SPMW-22	22	2	4 MT.
SPMW-24	24	2	4 MT.
SPMW-26	26	2	4 MT.
SPMW-28	28	2	4 MT.
SPMW-30	30	2	4 MT.
SPMW-32	32	2,5	4 MT.
SPMW-34	34	2,5	4 MT.
SPMW-38	38	3	4 MT.
SPMW-40	40	3	4 MT.
SPMW-42	42	3	4 MT.
SPMW-52	52	3	4 MT.
SPMW-54	54	3	4 MT.
SPMW-60	60	3	4 MT.
SPMW-72	72	3	4 MT.

SAPB

Armour Guard Black "Basic" Spiralina in plastica nera 'Basic'



Material: rigid PVC no crash*

Operating temperature range: -10°C +70°C

Hardness: shore A78

Breaking stretching (ISO R527) 130%

Breaking load (ISO R527): 40 kg/cm²

Materiale: PVC rigido antiurto*

Temperatura d'esercizio: -10°C +70°C

Durezza: shore A78 ±5

Allungamento a rottura (ISO R527): 130%

Carico di rottura (ISO R527): 40 kg/cm²

Part Number	I.D.mm	length(mt)	Weight Kg/m
SAPB-08	8	50	0.05
SAPB-12	12	50	0.06
SAPB-16	16	50	0.08
SAPB-20	20	50	0.12
SAPB-27	27	50	0.22
SAPB-30	30	50	0.25
SAPB-36	36	50	0.33
SAPB-44	44	25	0.48
SAPB-56	56	20	0.80
SAPB-67	67	20	0.88
SAPB-80	80	10	1.39
SAPB-100	100	7	1.90
SAPB-120	120	6	1.78

(* Also available in HDPE version for protection of hydraulic hoses.
Temperature range: -60°C +100°C.
Spiral: abrasion crush, UV, ozone, low temperature.
Resistance: Acids, Oils, Solvents.

(* Disponibile anche in versione HDPE idonea per protezioni di tubi oleodinamici.
Temperatura d'esercizio: -60°C +100°C
Spiralina: resistente all'abrasione, alle basse temperature, allo schiacciamento, ai raggi UV e all'ozono.
Resistenza: acidi, oli, solventi

Other diameters and/or pressures are feasible upon request - The characteristics and technical data could be changed without warning

Altri diametri e/o pressioni sono realizzabili su richiesta - Le caratteristiche e i dati tecnici possono essere modificati senza preavviso.

SKPB

Armour Guard Black "Endurance" Spiralina in plastica nera 'Endurance'



Bending creep: 110/30 Mpa (ISO 178)

Spiral: abrasion, crushing, UV, ozone and flame resistant conforming to UL94 HB self-extinguishing class.

Electrical resistivity: 10 e13 Ω

Test temperature: -35 ° C + 125 ° C

Polyamide (PA) spiral for protection of hydraulic tubes and multiple pipe wiring where high temperature is required.

Resistenza alla flessione: 110/30 Mpa (ISO 178)

Spiralina: resistente all'abrasione, allo schiacciamento, ai raggi UV, all'ozono e alla fiamma conforme alla classe di autoestinguenza UL94 HB.

Resistività Elettrica: 10 e13 Ω

Temperatura di prova: -35°C +125°C

Spiralina in poliammide (PA) per protezione tubi oleodinamici e cablaggi tubi multipli dove sia richiesta una temperatura elevata.

Part number	I.D.mm	length(mt)	Weight Kg/m
SKPB-08	8	30	0.04
SKPB-13	13	30	0.05
SKPB-16	16	30	0.07
SKPB-19	19	30	0.09
SKPB-25	25	30	0.14
SKPB-27	27	30	0.15
SKPB-35	35	30	0.21
SKPB-45	45	30	0.32
SKPB-67	67	20	0.065
SKPB-80	80	10	0.95

Other diameters and/or pressures are feasible upon request - The characteristics and technical data could be changed without warning

Altri diametri e/o pressioni sono realizzabili su richiesta - Le caratteristiche e i dati tecnici possono essere modificati senza preavviso.

MANB

Handle (Blue) Manopola (Blu)



Material: Rubber SBR+EPDM.

Operating temperature range: -20°C + 150°C.

Hardness: shore A65.

High mechanical strength.

Materiale: Gomma SBR+EPDM.

Temperatura d'esercizio: -20°C + 150°C.

Durezza: shore A65.

Elevata resistenza meccanica.

Part number	I.D.mm	length(mt)
MANB-04	15	116
MANB-05	18	128
MANB-06	21	128
MANB-08	23	128

MANN

Handle (Black) Manopola (Nera)



Material: Rubber SBR+EPDM.

Operating temperature range: -20°C + 150°C.

Hardness: shore A65.

High mechanical strength.

Materiale: Gomma SBR+EPDM.

Temperatura d'esercizio: -20°C + 150°C.

Durezza: shore A65.

Elevata resistenza meccanica.

Part number	I.D.mm	length(mt)
MANN-04	15	116
MANN-05	18	128
MANN-06	21	128
MANN-08	23	128

TPRS

Protective textile stockings Calza tessile di protezione



USE: Ideal for grouping and protecting tube bundles, saving space, protecting operators from possible assemblage failures. Protect from abrasion and wear. Limited blockage or loss of assembly.

IMPIEGO: Ideale per raggruppare e proteggere fasci di tubi, economizzare lo spazio, proteggere gli operatori da possibili fallimenti dell'assemblato. Proteggere dall'abrasione e dall'usura. Limitata protezione da scoppio o perdita dell'assemblato.

Features:

Elongation at break: from 24 to 34%

Material: High density polypropylene (70% polypropylene - 30% Polyester)

Color: Black

MSHA IC-242/06

Treatment: UV stabilization at 200 Kly

Abrasion resistance: > 25000 cycles

Minimum working temperature: 90°C (194°F)

Caratteristiche:

Allungamento a rottura: da 24 a 34%

Materiale: Polipropilene ad alta densità (70% Polipropilene - 30% Poliestere)

Colore: Nero

MSHA IC-242/06

Trattamento: Stabilizzazione UV a 200 Kly

Resistenza all'abrasione: > 25000 cicli

Temperatura massima d'esercizio: 90°C (194°F)

Part number	Width Larghezza mm	ID mm	Roll lenght
TPRS-20	35	20	100
TPRS-22	40	22	100
TPRS-25	45	25	100
TPRS-28	50	28	100
TPRS-32	55	32	100
TPRS-35	60	35	100
TPRS-40	65	40	100
TPRS-45	80	45	100
TPRS-50	90	50	100
TPRS-70	120	70	100
TPRS-90	150	90	100

Also available in the polyester version MSHA IC-242/06. Maximum operating temperature 130°C.

Disponibile anche nella versione poliestere MSHA IC-242/06. Temperatura massima di esercizio 130° C.

CFVS

Glass fiber tricotee sock with red silicone jacket

Calza tricotee in fibra di vetro con rivestimento in silicone rosso



USE: Particularly suitable for steel mills, foundries, glass processing, shipyards, railways. Isolating for class H and class C motors, transformers. Cabling in ovens, welders. Specially designed for high and high temperature resistance.

IMPIEGO: Particolarmente indicato nelle acciaierie, fonderie, lavorazioni del vetro, cantieri navali, ferrovie. Isolante per motori classe H e classe C, trasformatori. Cablaggi nei forni, saldatrici. Appositamente realizzate per la resistenza ad alte ed altissime temperature.

Features:

Maximum operating temperature: 1650 ° C (3000° F) exposure 15-30 seconds - 1093° C (2000° F) exposure 15-20 minutes - 260°C (500° F) to -54° C (-65° F) continuous exposure

Flame Resistance ISO15540 & ISO15541

Oil and fluid resistance: Resistant to most liquids including those based on hydrocarbons. Unmatched functionality after immersion for 120 hours at 80° F in MIL-L-6082 and Skydroll 500 liquid.

Compliance SAE AS1072E

MSHA Certification

Certified iaw UL 1441, VW1

Tested iaw ISO 6940, ISO6530, BS 2576, EN373, EN388

Rail Certification EN 45545-2:2013-08

Caratteristiche :

Temperatura massima di impiego: 1650° C (3000° F) esposizione 15-30 secondi - 1093° C (2000° F) esposizione 15-20 minuti - da 260° C (500° F) a -54° C (-65° F) esposizione continua.

Resistenza alla fiamma ISO15540 & ISO15541

Resistenza ad oli e fluidi: Resistente alla maggior parte dei liquidi incluso quelli a base di idrocarburi. Funzionalità inalterata dopo immersione per 120 ore a 80° F in liquido MIL-L-6082 e Skydroll 500.

Conformità SAE AS1072E

Certificazione MSHA

Certificato secondo UL 1441, VW1

Testato secondo ISO 6940, ISO6530, BS 2576, EN373, EN388

Certificazione Rail EN 45545-2:2013-08

Part number	Internal Size	Roll
		length
CFVS-06-30	06	30
CFVS-10-30	10	30
CFVS-13-30	13	30
CFVS-16-30	16	30
CFVS-19-30	19	30
CFVS-22-30	22	30
CFVS-25-30	25	30
CFVS-29-30	29	30
CFVS-32-30	32	30
CFVS-35-30	35	30
CFVS-38-30	38	30

Part number	Internal Size	Roll
		length
CFVS-41-30	41	30
CFVS-44-30	44	30
CFVS-51-30	51	30
CFVS-57-30	57	30
CFVS-64-30	64	30
CFVS-70-30	70	30
CFVS-76-30	76	30
CFVS-89	89	15
CFVS-102	102	15
CFVS-114	114	15
CFVS-127	127	15

CTA

HY-CAP Capsules in shrink-wrapping PVC

Capsule in PVC termoretraibili



System for preventing the internal contamination of the assembled hose up to the time of assembly, equivalent and alternative to the traditional threaded plastic plug.

Sistema per prevenire la contaminazione interna del tubo flessibile assemblato fino al momento del montaggio, equivalente ed alternativo al tradizionale tappo filettato in plastica.

Features:

- Environment:** Reduction of plastic waste quantities.
- Material:** Thermoplastic polyvinyl chloride (PVC) foil leaf.
- Range:** Cover of all applications with only 7 capsules diameters.
- Management:** Controls, documenting and reordering only 7 codes.
- Warehouse:** No more stock of hundreds types of plugs.
Heat-shrinking times around the second.
Capsule color and logo customizable, for minimum order quantity.

Caratteristiche:

- Ambiente:** Riduzione dei quantitativi di smaltimento di plastica.
- Materiale:** Foglia termoplastica in cloruro di polivinile (PVC) rigido.
- Gamma:** Copertura di tutte le applicazioni con soli 7 diametri di capsule.
- Gestione:** Controlli, documentazione e riordino di soli 7 codici.
- Magazzino:** Non più stock di centinaia di tipologie di tappi.
Tempi di termoretrazione intorno al secondo.
Colore capsula e logo personalizzabili, per quantitativo minimo d'ordine.

Part number	Size	Roll	Hexagonal	Q.ty
		length	covered	Box
CTA2530IFS	25	30	12/22	5805
CTA2850IFS	28	50	22/24	3120
CTA3140IFS	31	40	24/27	3864
CTA3440IFS	34	40	27/30	3828
CTA3850IFS	38	50	30/32	2200
CTA4660IFS	46	60	32/41	1320
CTA5860NA	58	60	41/50	1344
CTA7050NA	70	50	50/60	750
CTA8060NA	80	60	60/70	580

HSM

Heat shrink machine

Fornello per termoretrazione



System for preventing the internal contamination of the assembled hose up to the time of assembly, equivalent and alternative to the traditional threaded plastic plug.

Sistema per prevenire la contaminazione interna del tubo flessibile assemblato fino al momento del montaggio, equivalente ed alternativo al tradizionale tappo filettato in plastica.

Features:

Power supply: 230 V (1000 W)

Material: Stainless steel

Versions:

Bench-mounted (HSMB1)

Manual, with or without base support stand (BSS)(HSMA1 & HSMA2)

Caratteristiche:

Alimentazione: 230 V (1000 W)

Materiale: Acciaio inox

Versioni:

Da banco (HSMB1)

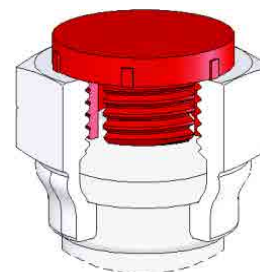
Manuale, con o senza supporto base (BSS)(HSMA1 e HSMA2)

Part no. Codice	Version Versione	Weight Peso (kg)	A X B	h
HSMA1	Manual, without bss	1.5	240x100	240
HSMA2	Manual, with bss	2.0	240x180	320
HSMB1	Table mounted	3.0	480x150	220

PLM

Protection plugs (Male)

Tappi di protezione (Maschio)



Part no.	Thread/Filetto				
	UNF/UN	BSPP/BSPT	NPTF	ORFS	METRIC
PLUG-01MV	-	1/8"-28	1/8"-27	-	M10X1,5
PLUG-21MV	7/16"-20	-	-	-	-
PLUG-02MV	1/2"-20	1/4"-19	1/4"-18	-	M12X1,5
PLUG-23MV	9/16"-18	-	-	9/16"-18	M14X1,5
PLUG-03MV	5/8"-18	3/8"-19	3/8"-18	-	M16X1,5
PLUG-13MV	-	-	-	11/16"-16	M18X1,5
PLUG-25MV	3/4"-16	-	-	-	-
PLUG-04MV	-	1/2"-14	1/2"-14	-	M20X1,5
PLUG-36MV	-	-	-	13/16"-16	-
PLUG-05MV	7/8"-14	5/8"-14	-	-	M22X1,5
PLUG-37MV	-	-	-	1"-14	-
PLUG-20MV	-	-	-	-	M24X1,5
PLUG-06MV	1.1/16"-12	3/4"-14	3/4"-14	-	M26X1,5
PLUG-29MV	1.3/16"-12	-	-	1.3/16"-12	M30X2/M30X1,5
PLUG-07MV	1.5/16"-12	1"-11	1"-11.1/2	-	-
PLUG-15MV	-	-	-	-	M36X2/M36X1,5
PLUG-38MV	-	-	-	1.7/16"-12	-
PLUG-32MV	-	-	-	-	M38X1,5
PLUG-27MV	1.5/8"-12	-	-	-	-
PLUG-08MV	-	1.1/4"-11	1.1/4"-11.1/2	-	-
PLUG-33MV	-	-	-	-	M42X1,5
PLUG-16MV	-	-	-	1.11/16"-12	M42X2
PLUG-17MV	-	-	-	-	M45X1,5/M45X2
PLUG-09MV	1.7/8"-12	1.1/2"-11	1.1/2"-11.1/2	-	-
PLUG-40MV	-	-	-	2"-12	-
PLUG-18MV	-	-	-	-	M52X2
PLUG-10MV	-	2"-11	2"-11.1/2	-	-
PLUG-28MV	2.1/2"-12	-	-	-	-

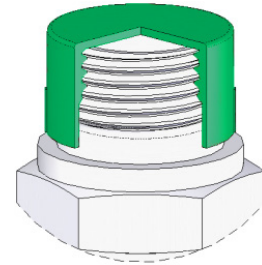
Also available in versions with snap caps.

Disponibili anche alcune versioni con tappi a pressione.

PLF

Protection plugs (Female)

Tappi di protezione (Femmina)

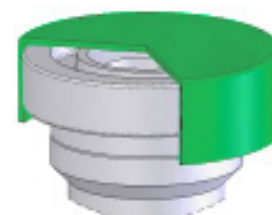


Part no. Codice	Thread/Filetto				
	UNF/UN	BSPP/BSPT	NPTF	ORFS	METRIC
PLUG-01FV	-	1/8"-28	1/8"-27	-	M10X1,5
PLUG-21FV	7/16"-20	-	-	-	-
PLUG-11FV	-	-	-	-	M12X1,5
PLUG-22FV	1/2"-20	-	-	-	-
PLUG-02FV	-	1/4"-19	1/4"-18	-	-
PLUG-23FV	9/16"-18	-	-	9/16"-18	M14X1,5
PLUG-24FV	5/8"-18	-	-	-	-
PLUG-12FV	-	-	-	-	M16X1,5
PLUG-03FV	-	3/8"-19	3/8"-18	-	-
PLUG-35FV	-	-	-	11/16"-16	-
PLUG-13FV	-	-	-	-	M18X1,5
PLUG-25FV	3/4"-16	-	-	-	-
PLUG-19FV	-	-	-	-	M20X1,5
PLUG-04FV	-	1/2"-14	1/2"-14	13/16"-16	-
PLUG-26FV	7/8"-14	-	-	-	M22X1,5
PLUG-05FV	-	5/8"-14	-	-	-
PLUG-20FV	-	-	-	-	M24X1,5
PLUG-37FV	-	-	-	1"-14	-
PLUG-06FV	1.1/16"-12	3/4"-14	3/4"-14	-	M26X1,5
PLUG-29FV	1.3/16"-12	-	-	1'3/16	M30X1,5/M30X2
PLUG-07FV	1.5/16"-12	1"-11	1"-11.1/2	-	-
PLUG-15FV	-	-	-	-	M36X1,5/M36X2
PLUG-38FV	-	-	-	1.7/16"-12	-
PLUG-32FV	-	-	-	-	M38X1,5
PLUG-27FV	1.5/8"-12	-	-	-	-
PLUG-08FV	-	1.1/4"-11	1.1/4"-11.1/2	-	M42X1,5
PLUG-16FV	-	-	-	-	M42X2
PLUG-39FV	-	-	-	1.11/16"-12	-
PLUG-17FV	-	-	-	-	M45X1,5/M45X2
PLUG-09FV	1.7/8"-12	1'1/2	1.1/2"-11.1/2	-	-
PLUG-40FV	-	-	-	2"-12	-
PLUG-18FV	-	-	-	-	M52X2
PLUG-10FV	-	2"-11	2"-11.1/2	-	-
PLUG-28FV	2.1/2"-12	-	-	-	-

PFS3

Protection plugs for SAE 3000 flanges

Tappi di protezione per flange SAE 3000

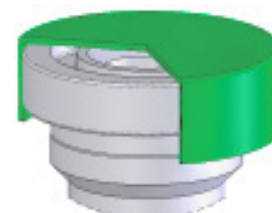


Part no. Codice	Size Misura nominale
PFS3-08V	1/2
PFS3-12V	3/4
PFS3-16V	1
PFS3-20V	1.1/4
PFS3-24V	1.1/2
PFS3-32V	2
PFS3-40V	2.1/2

PFS6

Protection plugs for SAE 6000 flanges

Tappi di protezione per flange SAE 6000



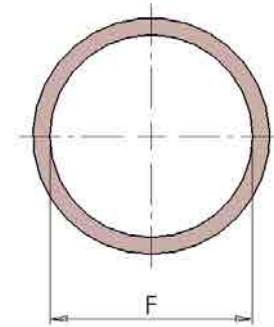
Part no. Codice	Size Misura nominale
PFS6-08V	1/2
PFS6-12V	3/4
PFS6-16V	1
PFS6-20V	1.1/4
PFS6-24V	1.1/2
PFS6-32V	2

RM00

Metric copper washer

Rondella in rame metrica

Part no. Codice	Thread Filettatura (F)
RM00-06	M6
RM00-08	M8
RM00-10	M10
RM00-12	M12
RM00-14	M14
RM00-16	M16
RM00-18	M18
RM00-20	M20
RM00-20-26	M20
RM00-22	M22
RM00-26	M26
RM00-28-34	M28
RM00-30	M30

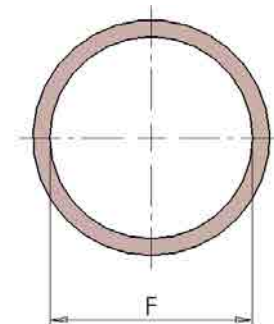


RG00

BSPP copper washer

Rondella in rame BSPP

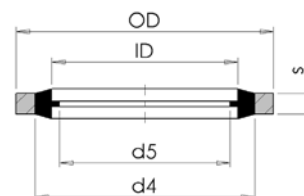
Part no. Codice	Thread Filettatura (F)
RG00-02	G 1/8"
RG00-04	G 1/4"
RG00-06	G 3/8"
RG00-08	G 1/2"
RG00-10	G 5/8"
RG00-12	G 3/4"
RG00-16	G 1"
RG00-20	G 1.1/4"
RG00-24	G 1.1/2"
RG00-32	G 2"



RBMA

Metric Self-Centering Bonded Seal

Bonded autocentranti metrici

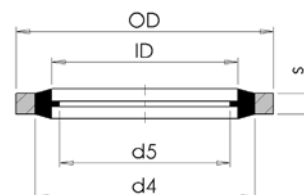


Part no. Codice	Dimensions Dimensioni (mm)					Thread Filettatura
	ID	OD	d4	d5	s	
RBMA-04	4.5	7	5.4	3.3	1	M4
RBMA-08	8.7	14	10.4	6.4	1	M8
RBMA-10	10.7	16	12.4	8.05	1.5	M10
RBMA-12	12.7	18	14.4	10.2	1.5	M12
RBMA-14	14.7	22	16.4	11.38	1.5	M14
RBMA-16	16.7	24	18.4	13.41	1.5	M16
RBMA-18	18.7	26	20.4	14.76	1.5	M18
RBMA-20	20.7	28	22.5	16.76	1.5	M20
RBMA-22	22.7	30	24.4	18.74	2	M22

RBGA

BSP Self-Centering Bonded Seal

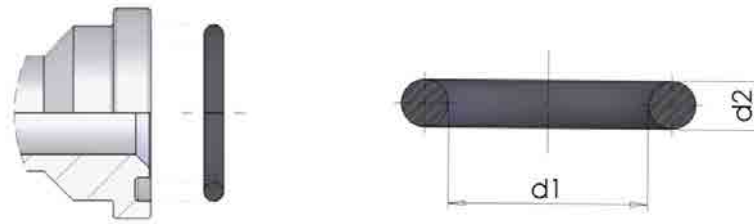
Bonded autocentranti BSP



Part no. Codice	Dimensions Dimensioni (mm)					Thread Filettatura
	ID	OD	d4	d5	s	
RBGA-02	10.37	15.88	11.84	8.26	2	1/8
RBGA-04	13.74	20.57	15.21	11.18	2	1/4
RBGA-06	17.28	23.8	18.75	14.76	2	3/8
RBGA-08	21.54	28.58	23.01	18.24	2.47	1/2
RBGA-10	23.49	31.75	24.97	20.27	2.47	5/8
RBGA-12	27.05	34.93	28.53	23.83	2.47	3/4
RBGA-14	30.81	38.1	32.29	27.51	2.47	7/8
RBGA-16	33.89	42.8	36.88	29.92	3.4	1
RBGA-20	42.93	52.38	45.93	38.45	3.4	1.1/4
RBGA-24	48.44	58.6	51.39	44.45	3.4	1.1/2
RBGA-28	54.89	69.85	58.3	50.42	3.4	1.3/4
RBGA-32	60.58	73.03	63.63	56.26	3.4	2
RBGA-40	76.08	90.17	79.38	71.5	3.4	2.1/2

O-Rings for SAE J 518 Flange (3000 PSI and 6000 PSI)

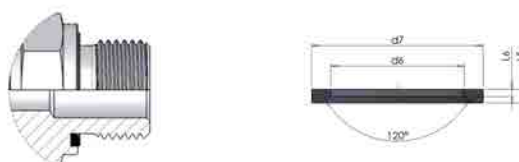
O-Ring per flange SAE J 518 (3000 PSI e 6000 PSI)



Part no. Codice	AS568 Ref.	BS Ref.	d1 (mm)	d2 (mm)	Flange size (inch) Dimensione flangia (pollici)	Dash size
8-4075	2-210	4075	18.64	3.53	1/2	08
8-4100	2-214	4100	24.99	3.53	3/4	12
8-4131	2-219	4131	32.92	3.53	1	16
8-4150	2-222	4150	37.69	3.53	1-1/4	20
8-4187	2-225	4187	47.22	3.53	1-1/2	24
8-4225	2-228	4225	56.74	3.53	2	32
8-4275	2-232	4275	69.44	3.53	2-1/2	40
8-4337	2-237	4337	85.32	3.53	3	48
8-4387	2-241	4387	98.02	3.53	3-1/2	56
8-4437	2-245	4437	110.72	3.53	4	64

Elastomeric Seal for BSP / Metric Male Threads

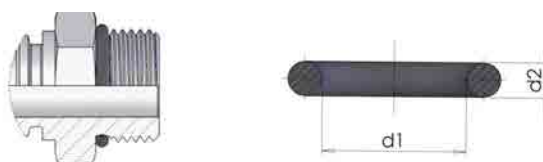
Guarnizione elastomerica per filettature maschio BSP/Metriche



Part no. Codice	Nominal size Misura nominale	d6 (mm)	d7 (mm)	L5 (mm)	L6 (mm)	Thread Filettatura	Thread BSP Filettatura BSP
8-E10	10	8.4	11.9	1	0.5	M10x1	1/8"-28
8-E12	12	9.8	14.4	1.5	0.8	M12x1,5	
8-E14	14	11.6	16.5	1.5	0.8	M14x1,5	1/4-19
8-E16	16	13.8	18.9	1.5	0.8	M16x1,5	
8-E17	17	14.7	18.9	1.5	0.8		3/8-19
8-E18	18	15.7	20.9	1.5	0.8	M18x1,5	
8-E20	20	17.8	22.9	1.5	0.8	M20x1,5	
8-E21	21	18.5	23.9	1.5	0.8		1/2-14
8-E22	22	19.6	24.3	1.5	0.8	M22x1,5	
8-E27	27	23.9	29.2	1.5	0.8	M26x1,5 M27x2	3/4-14
8-E33	33	29.7	35.7	2	1	M33x2	1-11
8-E42	42	38.8	45.8	2	1	M42x2	1.1/4-11
8-E48	48	44.7	50.7	2	1	M48x2	1.1/2-11

O-Rings for Metric Male Threads (ISO 6149)

O-Ring per filettature maschio metriche (ISO 6149)



Part no. Codice	d1 (mm)	d2 (mm)	Thread Filettatura	Dash size
8-8.1X1.6	8.1	1.6	M10x1	10
8-9.3X2.2	9.3	2.2	M12x1,5	12
8-11.3X2.2	11.3	2.2	M14x1,5	14
8-13.3X2.2	13.3	2.2	M16x1,5	16
8-15.3X2.2	15.3	2.2	M18x1,5	18
8-19.3X2.2	19.3	2.2	M22x1,5	22
8-23.6X2.9	23.6	2.9	M27x2	27
8-29.6X2.9	29.6	2.9	M33x2	33
8-38.6X2.9	38.6	2.9	M42x2	42
8-44.6X2.9	44.6	2.9	M48x2	48

O-Rings for ORFS Male Threads

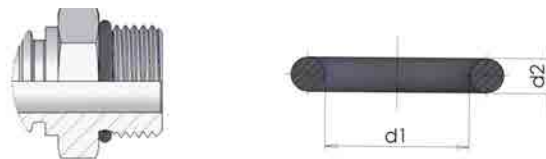
O-Ring per filettature maschio ORFS



Part no. Codice	AS568 Ref.	BS Ref.	d1 (mm)	d2 (mm)	UNF Thread Filettatura UNF	Dash size
8-107	2-11	2031	7.66	1.78	9/16x18	06
8-110	2-12	2037	9.25	1.78	11/16x16	09
8-2050	2-14	2050	12.42	1.78	13/16x16	11
8-2062	2-16	2062	15.6	1.78	1x14	13
8-2075	2-18	2075	18.77	1.78	1-3/16x12	14
8-2080	2-21	2080	23.52	1.78	1-7/16x12	15
8-2118	2-25	2118	29.87	1.78	1-11/16x12	21
8-2150	2-29	2150	37.82	1.78	2x12	32

O-Ring for BSPP 60° cone

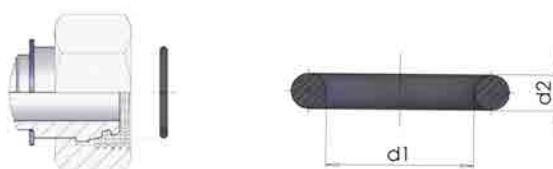
O-Ring per maschio BSPP 60°



Part no. Codice	AS568 Ref.	BS Ref.	d1 (mm)	d2 (mm)	BSPP Thread Filettatura BSPP	Dash size
8-5.5x1	-	-	5.5	1	1/4-19	04
8-7.1x1.6	-	-	7.1	1.6	3/8-19	06
8-11.1x1.6	-	-	11.1	1.6	1/2-14	08
8-2056	2-15	2056	14	1.78	5/8-14	10
8-15.1x1.6	-	-	15.1	1.6	3/4-14	12
8-2087	2-20	2087	21.95	1.78	1-11	16
8-2112	2-24	2112	28.3	1.78	1.1/4-11	20
8-2118	2-25	2118	29.87	1.78	1.1/2-11	24
8-2-32	2-32	2187	47.37	1.78	2-11	32

O-Ring for Metric 24° Cone

O-Ring per cono metrico 24°



Part no. Codice	d1 (mm)	d2 (mm)	DKOL (L Series)	DKOS (S Series)	Tube OD Ø tubo
8-4.5x1.5	4	1.5	M12x1,5	M14x1.5	6
8-6.5x1.5	6	1.5	M14x1,5	M16x1.5	8
8-8x1.5	7.5	1.5	M16x1,5	M18x1.5	10
8-10x1.5	9	1.5	M18x1,5	M20x1.5	12
8-10x2	10	2		M22x1.5	14
8-12x2	12	2	M22x1,5	M24x1.5	15-16
8-13x2	13	2		M24x1.5	
8-15x2	15	2	M26x1,5		18
8-16.3x2.4	16.3	2.4		M30x2	20
8-20x2	20	2	M30x2		22
8-20.3x2.4	20.3	2.4		M36x2	25
8-26x2	26	2	M36x2		28
8-25.3x2.4	25.3	2.4		M42x2	30
8-32x2.5	32	2.5	M45x2		35
8-33.3x2.4	33.3	2.4		M52x2	38
8-38x2.5	38	2.5	M52x2		42

O-Rings for "K" Type Male Fittings

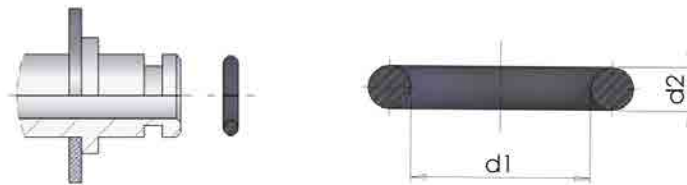
O-Ring per raccordo tipo "K" per idropulitrici



Part no. Codice	d1 (mm)	d2 (mm)	Metric thread Filettatura metrica	Inch thread Filettatura in pollici	Dash size
8-10x2	10	2	M22X1.5	1/8"-28	02

O-Rings for "K" Type Insert

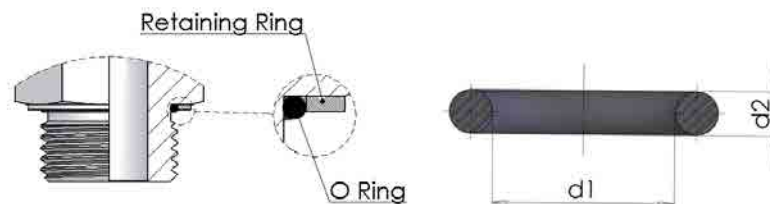
O-Ring per raccordo tipo "K" (lancia)



Part no. Codice	d1 (mm)	d2 (mm)	Inch thread filettatura (pollici)	Dash size
8-105	6.07	1.78	1/8"-28	02

O-Ring for BSPP Male (ISO 1179-3)

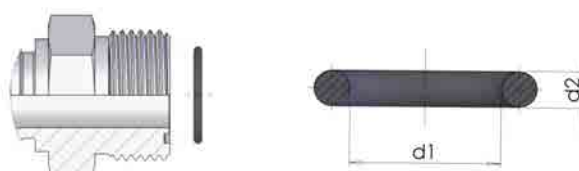
O-Ring per maschio BSPP (ISO 1179-3)



Part no. Codice	AS568 Ref.	BS Ref.	d1 (mm)	d2 (mm)	BSPP Thread Filettatura BSPP	Dash size
8-8X1.88			7.97	1.88	1/8-28	02
8-113	2-111	3043	10.78	2.62	1/4-19	04
8-118	2-113	3056	13.95	2.62	3/8-19	06
8-123	5-256	123	17.86	2.62	1/2-14	08
8-3093	2-119	3093	23.47	2.62	3/4-14	12
8-29.47X3.53			29.47	3.53	1-11	16
8-37.69X3.53	2-222	4150	37.69	3.53	1.1/4-11	20
8-4175	2-224	4175	44.04	3.53	1.1/2-11	24

O-Rings for Metric Male Threads

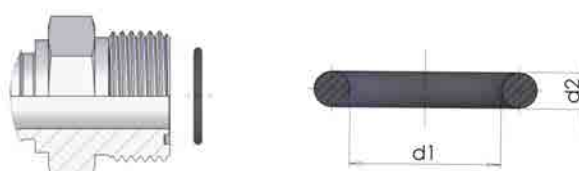
O-Ring per filettature maschio metriche



Part no. Codice	d1 (mm)	d2 (mm)	Inch thread filettatura (pollici)	Dash size
8-8X1.8	8	1.8	M10x1	10
8-9.3X2.2	9.3	2.2	M12x1,5	12
8-11.3X2.2	11.3	2.2	M14x1,5	14
8-13.3X2.2	13.3	2.2	M16x1,5	16
8-3062	15.54	2.62	M18x1,5	18
8-19X2.65	19	2.65	M22x1,5	22
8-23.47X2.95	23.47	2.95	M27x2	27
8-29.4X3.1	29.4	3.1	M33x2	33
8-38X3.5	38	3.5	M42x2	42
8-4175	44.04	3.53	M48x2	48

O-Ring for SAE Male (ISO 11926)

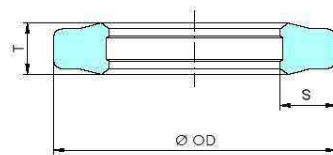
O-Ring per Maschio SAE (ISO 11926)



Part no. Codice	d1 (mm)	d2 (mm)	Metric Thread Filettatura metrica	Dash size
8-8.92x1.83	8.92	1.83	7/16x20	04
8-10.52x1.83	10.52	1.83	1/2x20	05
8-11.89x1.98	11.89	1.98	9/16x18	06
8-16.36x2.21	16.36	2.21	3/4x16	08
8-19.18x2.46	19.18	2.46	7/8x14	10
8-23.47x2.95	23.47	2.95	1-1/16x12	12
8-29.74x2.95	29.74	2.95	1-5/16x12	16
8-37.47x3	37.47	3	1-5/8x12	20

GPPO

Polyurethane Seals for SAE J518 Flanges (3000 PSI and 6000 PSI) and Cat® Flanges Guarnizioni in poliuretano per flange SAE J518 (3000 PSI e 6000 PSI) e flange Cat®



Features:

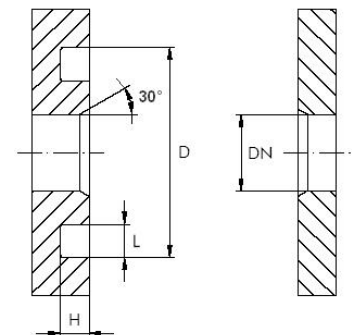
Standard material: Pu41 - Blue polyurethane 93 shore A
 Range temperature: -30°C + 100°C
 Maximum pressure: 500 bar
 Excellent abrasion resistance
 Very high resistance to extrusion
 Long service life
 The sealing ring profile ensures excellent sealing performance
 Suitable for rough surface finishes

Caratteristiche:

Materiale standard: Poliuretano PU41 - BLU - 93 shore A
 Temperatura d'esercizio: -30°C + 100°C
 Pressione massima d'esercizio: 500 bar
 Elevata resistenza all'abrasione
 Ottima resistenza all'estrusione
 Lunga durata operativa
 Il profilo dell'anello garantisce elevate prestazioni di tenuta
 Idonea per superfici con finitura non perfetta

Part no. Codice	Flange Size (inch) Dimensione flangia (pollici)	OD (mm)	S (mm)	T (mm)
GPP0-08	1/2"	25.5	3.8	3.4
GPP0-12	3/4"	31.8	3.8	3.4
GPP0-16	1"	39.6	3.8	3.4
GPP0-20	1.1/4"	44.5	3.8	3.4
GPP0-24	1.1/2"	53.8	3.8	3.4
GPP0-32	2"	63.4	3.8	3.4

Flange Size (inch) Dimensione flangia (pollici)	DN	D (mm)	H (mm)	L (mm)
		Min-Max	Min-Max	Min-Max
1/2"	13	25.40-25.83	2.79-2.92	3.94-4.45
3/4"	19	31.75-31.88	2.79-2.92	3.94-4.45
1"	25	39.62-39.75	2.79-2.92	3.94-4.45
1.1/4"	32	44.45-44.58	2.79-2.92	3.94-4.45
1.1/2"	38	53.72-53.98	2.79-2.92	3.94-4.45
2"	51	62.50-63.25	2.79-2.92	3.94-4.45



Standard seals are supplied in NBR 90 Shore A. Available on request in FKM (FPM) and EPDM.

Le guarnizioni standard sono fornite in NBR 90 Shore A. Disponibili su richiesta in FKM (FPM) ed EPDM.

Comparison of elastomers properties

Confronto delle proprietà degli elastomeri

Features Caratteristiche	Material / Materiale		
	NBR	FPM	EPDM
Compression set Deformazione permanente a compressione	1	1	3
Tear resistance Resistenza alla lacerazione	2	2	3
Abrasion resistance Resistenza all'abrasione	2	2-3	2
Ageing resistance Resistenza all'invecchiamento	4	1	2
Ozone resistance Resistenza all'ozono	4	1	2
Resistance to oils and greases Resistenza ad oli e grassi	2	1	5
Fuel resistance Resistenza ai combustibili	4**	2**	5
Resistance to hot water (°C) Resistenza all'acqua calda (°C)	80**	80**	130
Steam resistance (°C) Resistenza al vapore (°C)	-	-	130
Standard material max. temperature (°C) Temperatura massima materiale standard (°C)	100	200	130
Special compound max. temperature (°C) Temperatura massima mescole speciali (°C)	120	-	-
Standard material min. temperature (°C) Temperatura minima materiale standard	-30	-15	-45
Special compound min. temperature (°C) Temperatura minima mescole speciali (°C)	-50	-35	-

Legend/Legenda:

1 Excellent / 2 Good / 3 Fair / 4 Limited / 5 Not recommended

* Short term (approx. 7 days / 8 hours per day) with special compounds

** Other elastomers (e.g. silicone) available upon request

1 Ottima / 2 buona / 3 media / 4 bassa / 5 debole

* Breve durata (circa 7 giorni / 8 ore al giorno) con materiali speciali

** Altri elastomeri (es. silicone) disponibili su richiesta

BOXG-BS-70

NBR 70 shore A O-Ring Kit
British standard

ASTM D - 2000 SAE J200
30 Sizes - 382 PIECES



Part no. Codice	ID (mm)	OD (mm)	Section Sezione (mm)	Qty Quantità
8-2012	2.90	6.46	1.78	20
8-102	3.68	7.24	1.78	20
8-103	4.48	8.04	1.78	20
8-2021	5.28	8.84	1.78	20
8-105	6.07	9.63	1.78	20
8-107	7.65	11.21	1.78	20
8-110	9.25	12.81	1.78	20
8-3037	9.19	14.43	2.62	13
8-113	10.77	16.01	2.62	13
8-3050	12.37	17.61	2.62	13
8-118	13.94	19.18	2.62	13
8-3062	15.54	20.78	2.62	13
8-3068	17.12	22.36	2.62	13
8-124	18.72	23.96	2.62	13
8-4075	18.64	25.70	3.53	10
8-4081	20.22	27.28	3.53	10
8-4087	21.82	28.88	3.53	10
8-4083	23.39	30.45	3.53	10
8-4100	24.99	32.05	3.53	10
8-4106	26.57	33.63	3.53	10
8-4112	28.17	35.23	3.53	10
8-29.74X3.53	29.74	36.80	3.53	10
8-4125	31.34	38.40	3.53	10
8-4131	32.92	39.98	3.53	10
8-4137	34.52	41.58	3.53	10
8-4143	36.09	43.15	3.53	10
8-37.69X3.53	37.69	44.75	3.53	10
8-6150	37.47	48.13	5.33	7
8-6162	40.64	51.30	5.33	7
8-6175	43.82	54.48	5.33	7

BOXH-MS-70

NBR 70 shore A Box O-ring Kit
Metric standard

ASTM D - 2000 SAE J200
30 Sizes = 382 PIECES



Part no. Codice	ID (mm)	OD (mm)	Section Sezione (mm)	Qty Quantità
8-3X2	3.00	7.00	2.00	18
8-4X2	4.00	8.00	2.00	18
8-5X2	5.00	9.00	2.00	18
8-6X2	6.00	10.00	2.00	18
8-7X2	7.00	11.00	2.00	17
8-8X2	8.00	12.00	2.00	17
8-10X2	10.00	14.00	2.00	17
8-10X2.5	10.00	15.00	2.50	14
8-11X2.5	11.00	16.00	2.50	14
8-12X2.5	12.00	17.00	2.50	14
8-14X2.5	14.00	19.00	2.50	14
8-16X2.5	16.00	21.00	2.50	14
8-17X2.5	17.00	22.00	2.50	14
8-19X2.5	19.00	24.00	2.50	14
8-19X3	19.00	25.00	3.00	12
8-20X3	20.00	26.00	3.00	12
8-22X3	22.00	28.00	3.00	12
8-24X3	24.00	30.00	3.00	12
8-25X3	25.00	31.00	3.00	12
8-27X3	27.00	33.00	3.00	12
8-28X3	28.00	34.00	3.00	12
8-30X3	30.00	36.00	3.00	12
8-32X3	32.00	38.00	3.00	12
8-33X3	33.00	39.00	3.00	12
8-35X3	35.00	41.00	3.00	12
8-36X3	36.00	42.00	3.00	12
8-38X3	38.00	44.00	3.00	12
8-38X4	38.00	46.00	4.00	9
8-42X4	42.00	49.00	4.00	9
8-45X4	45.00	52.00	4.00	9

BOXBG

BSP Self-Centring Bonded Seal Kt

Kit bonded autocentranti BSP



Part no. Codice	ID (mm)	OD (mm)	d4 (mm)	d5 (mm)	s (mm)
RBGA-02	10.37	15.88	11.84	8.26	2
RBGA-04	13.74	20.57	15.21	11.18	2
RBGA-06	17.28	23.8	18.75	14.76	2
RBGA-08	21.54	28.58	23.01	18.24	2.47
RBGA-12	27.05	34.93	28.53	23.83	2.47
RBGA-16	33.89	42.8	36.88	29.92	3.4

PSPT-PU

Cleaning Foam Projectiles

Proiettili di pulizia in schiuma



Part no. Codice	ID (Inch) Ø interno (pollici)	ID Ø interno (mm)	Qty Quantità
PSPT-PU07	1/4"	4,5-7	100
PSPT-PU10	5/16"	6-9	100
PSPT-PU12	3/8"	7-11	100
PSPT-PU14	1/2"	9-14	100
PSPT-PU18	5/8"	11-17	50
PSPT-PU22	3/4"	13-19	50
PSPT-PU26	1"	16,5-25	50
PSPT-PU30	1-1/4"	20-31	50
PSPT-PU40	1-1/2"	25-40	50
PSPT-PU55	2"	32-55	50

PSPT06-50

Classic Cleaning Gun in Die-Cast Aluminium

Pistola classica per pulizia interna tubi in alluminio pressofuso



Part no. Codice	ID (Inch) Ø interno (pollici)	ID Ø interno (mm)
PSPT06-50	3/16" to 2"	5 to 6

PSPT-UU

Thermoplastic hose nozzle

Ugello termoplastico

Part number	I.D. INCH
PSPT-UU04	3/16"
PSPT-UU06	1/4"
PSPT-UU08	5/16"
PSPT-UU10	3/8"
PSPT-UU13	1/2"
PSPT-UU16	5/8"
PSPT-UU19	3/4"
PSPT-UU25	1"
PSPT-UU32	1-1/4"
PSPT-UU38	1-1/2"
PSPT-UU50	2"



PSPT-UU STEEL

Galvanized steel hose nozzle

Ugello in acciaio zincato

Part number	I.D. INCH
PSPT-UU04-STEEL	3/16"
PSPT-UU06-STEEL	1/4"
PSPT-UU08-STEEL	5/16"
PSPT-UU10-STEEL	3/8"
PSPT-UU13-STEEL	1/2"
PSPT-UU16-STEEL	5/8"
PSPT-UU19-STEEL	3/4"
PSPT-UU25-STEEL	1"
PSPT-UU32-STEEL	1-1/4"
PSPT-UU38-STEEL	1-1/2"
PSPT-UU50-STEEL	2"



For the nozzles from PSPT UU04-STEEL-to-PSPT UU32-STEEL is required the use of the adapter **PSPT-AD**.

Per gli ugelli da PSPT UU04-STEEL a PSPT UU32-STEEL è necessario l'uso dell'adattatore **PSPT-AD**.



HOSE CLEANING SET SET DI PULIZIA PER TUBI

PSPT06-50-KIT CLASSIC

Kit includes:

- 1 standard cleaner gun
- 11 thermoplastic hose nozzles (3/16" - 2")
- 1 protective carrying case

Il kit include:

- 1 pistola di pulizia standard
- 11 ugelli per tubi termoplastici (3/16" - 2")
- 1 custodia protettiva



PSPT06-50-KIT STEEL

Kit includes:

- 1 standard cleaner gun
- 11 steel hose nozzles (3/16" - 2")
- 1 protective carrying case

Il kit include:

- 1 pistola di pulizia standard
- 11 ugelli per tubi in acciaio (3/16" - 2")
- 1 custodia protettiva





Indice Analitico

T2E101K	48	TISM035	40
T2E102K	49	TISM042	41
TCB2E28 TCN2E28	64	TSG0042	57
TCB2E42 TCN2E42	65	TSR045P	10
TEB0E28 TEN0E28	62	TTRK200	53
TEB0E42 TEN0E42	63	TTRK250	54
TF000T1	82	TTRK350	55
TF00LTC	83		
TFA201KI	3		
TFA202KI	4		
TFD2012	5		
TFD2022	6		
TFDC012B	45		
TFDE011	51		
TFDH012B	19		
TFDH022B	20		
TFDL012N	21		
TFDL022N	22		
TFDM45P	11		
TFDR013	30		
TFDR015	31		
TFDR45H	29		
TFE02TEI	13		
TFE03TEI	14		
TFE201K	7		
TFE202K	8		
TFE2P15	24		
TFE2PF2	23		
TFN001K TFB001K	60		
TFN002K TFB002K	61		
TFS0004	16		
TFS0005	15		
TFS0006I	12		
TFS0007	73		
TFS0008	76		
TFS0017	9		
TFS0018	77		
TFS00H1	74		
TFS00H2	75		
TFS00HP	78		
TFS00MP	79		
TFW0070	66		
TFW0085	67		
TFW0110 TFW0100	68		
TFW0125 TFW0120	69		
TFW0145 TFW0135	70		
THD0500	56		
THE0G1K	52		
THE0T3K	28		
THE201K	25		
THE202K	26		
THE2J2K	50		
THE2M2K	27		
THEMMDR	59		
THL201K	46		
THL202K	47		
THS00JG	58		
TIB2021	34		
TIB2028	35		
TIB2035	36		
TIB2042	37		
TISM021	38		
TISM028	39		

Indice Sezioni

INTERNATIONAL STANDARDS	1	INTERPUMP Hyblast 18k	69
Hypress EASY K 1SC	3	INTERPUMP Hyblast 20k	70
Hypress EASY K 2SC	4	Thermoplastic	71
INTERPUMP Hypress One 1SN	5	SAE 100R7	73
INTERPUMP Hypress Two 2SN	6	One high tensile steel wire braid	74
INTERPUMP Hypress 1SC	7	Two high tensile steel wire braids	75
INTERPUMP Hypress 2SC	8	SAE 100R8	76
INTERPUMP Hypress R17	9	R18 Low temperature	77
INTERPUMP Hypress FOUR SP	10	INTERPUMP HyUltra	78
INTERPUMP Hypress 4SP	11	Mini-flexible	79
Hypress UniLock	12	PTFE	80
Hypress 2TE	13	P.T.F.E. - T1	82
EN 854 3TE	14	P.T.F.E. - LTC	83
SAE 100R5	15	ACCESSORIES	85
INTERPUMP Hy-VACUUM - SAE 100R4	16		
HIGH PERFORMANCE	17		
INTERPUMP HyCelsius One 1SN	19		
INTERPUMP HyCelsius Two 2SN	20		
INTERPUMP HyFreeze 1SN	21		
INTERPUMP HyFreeze 2SN	22		
INTERPUMP PilotFlex 120	23		
INTERPUMP Pilot Plus 150	24		
INTERPUMP LongLife 1SC	25		
INTERPUMP LongLife 2SC	26		
INTERPUMP MARATHON 2SC	27		
INTERPUMP TREEATHLON	28		
INTERPUMP HyGreen 4SH	29		
INTERPUMP HyGreen R13	30		
INTERPUMP HyGreen R15	31		
HYSOBARIC LINE	32		
INTERPUMP HySOpress 3K WB	34		
INTERPUMP HySOpress 4K WB	35		
INTERPUMP HySOpress 5K WB	36		
INTERPUMP HySOpress 6K WB	37		
INTERPUMP HySOpress 3K WS	38		
INTERPUMP HySOpress 4K WS	39		
INTERPUMP HySOpress 5K WS	40		
INTERPUMP HySOpress 6K WS	41		
SOLUTIONS FOR APPLICATIONS	42		
INTERPUMP COMPRESSOR One	45		
INTERPUMP LongLift 1SC	46		
INTERPUMP LongLift 2SC	47		
INTERPUMP LongLife Dual 1SC	48		
INTERPUMP LongLife Dual 2SC	49		
INTERPUMP HYJACK	50		
INTERPUMP HyRail	51		
INTERPUMP HyGEAR 1SC	52		
INTERPUMP HyTruck 200 bar	53		
INTERPUMP HyTruck 250 bar	54		
INTERPUMP HyTruck 350 bar	55		
INTERPUMP HySpir 500	56		
HyTRAKTION	57		
INTERPUMP Mega Jet	58		
INTERPUMP MEGADRILL	59		
INTERPUMP Jet 1SC	60		
INTERPUMP Jet 2SC	61		
INTERPUMP HyWASHER 4K	62		
INTERPUMP HyWASHER 6K	63		
INTERPUMP HyWASHER PLUS 4K	64		
INTERPUMP HyWASHER PLUS 6K	65		
INTERPUMP Hyblast 10k	66		
INTERPUMP Hyblast 12k	67		
INTERPUMP Hyblast 15k	68		



INTERPUMP

FLUID SOLUTIONS 

Powered by I.M.M. Hydraulics



I.M.M. Hydraulics Spa
interpumpfluidsolutions.com

Via Italia, 49-51
66041 - Atessa (Ch) - Italy
T. +39 (0) 0872 889225
F. +39 (0) 0872 889226

